



ABBOTS TALLOT  
OFFERS OVER £750,000

One-of-a-kind Barn Conversion set in 3.2 Acres  
BEAFORD

MILLER TOWN & COUNTRY  
exp UK





*Abbots Tallot*

- » Detached Barn Conversion
- » 4 Bedrooms (2 En Suite)
- » Separate Shower Room & Sauna
- » Very Large Vaulted Living Room
- » Separate Vaulted Dining Room
- » Farmhouse Kitchen / Breakfast Room
- » 2 Utility Rooms
- » Library / Home Office
- » Circle Drive Leading to Integral Garage
- » 3.2 acres in Total, Predominantly Woodland



## The Property

This unique 4 bedroom barn conversion has been in the same ownership since its original conversion in 1992/93, and it is absolutely perfect for those seeking grand spaces to entertain guests or a large family home with land. The barn is brimming with character features, including vaulted ceilings with exposed beams, inglenook fireplace, a galleried library and more. The property is set in approximately 3.2 acres of grounds, which includes front and rear gardens and a tract of broadleaf woodland that is a wildlife haven.



## Accommodation

The front door of Abbots Tallot opens into a large entrance hall with access to the downstairs washroom and the half-turned staircase to the upper level; to the left are the practical spaces of the home, and to the right are the extensive and unique reception spaces. The large dual aspect kitchen-breakfast room features a generous array of storage units and worktop space, and the oil-fired aga creates a cosy and welcoming environment during the chillier months. This farmhouse kitchen offers ample space for a dining table for family breakfasts or casual suppers. Beyond the kitchen are two separate utility areas containing space for laundry facilities, storage and the oil fired boiler as well as a shelved pantry area, the integral garage can be accessed via the utility. To the rear of the utility areas is an extension with curving stone staircase leading down to what is currently a library with doors to the rear garden. This room offers the versatility to use as a home office, hobby room, gym or as a therapy room perhaps? On the opposite side of the entrance hall are the impressive reception rooms, including a vaulted dining room measuring 26'0" x 20'8" and the showcase vaulted living room measuring 38'5" x 18'7". The living room boasts a substantial stone fireplace with wood burner and extensive glazing with patio doors leading to the front and rear gardens - perfect for indoor / outdoor living in the warmer months! From the entrance hall, the stairs lead you to a landing with long range views to the rear of the property which provides access to the four double bedrooms. Two of the bedrooms are en suite and have built in wardrobe storage. The other two bedrooms share a separate shower room which also benefits from a built in sauna. Although the interior would benefit from some cosmetic updates, it is in excellent condition throughout.







*AJ*  
*Abbots Talbot*







## Outside

The property is approached via a private driveway shared with one neighbouring property. The gated drive continues down into the secluded and secure 'walled garden' with a circular turning and parking area with access to the integral double garage. There is a large front lawn and walled patio area providing total privacy, and across the drive are mature trees and shrubs planted by the current owners in the 1990s providing an attractive backdrop for the front gardens.

To the rear is a lawned garden accessed via a grassy pathway down the side of the house. The level rear garden is immediately adjacent to the large reception room, with three sets of French doors opening out on to the lawn, making it perfect for social gatherings to spill outside on warm summer evenings. A set of steps leads down to the lower garden which wraps around the library and includes a raised vegetable bed for keen gardeners. A gently sloping trail leads from here down into the area of beautiful broadleaf woodland that is home to abundant wildlife - the sound of singing birds provides a lovely soundtrack for a walk. The woodland is generally sloping, but a flatter area at the base would permit camping, forest craft or just enjoying a fire ring with family and friends. A public footpath traverses the woodland, well away from the house.

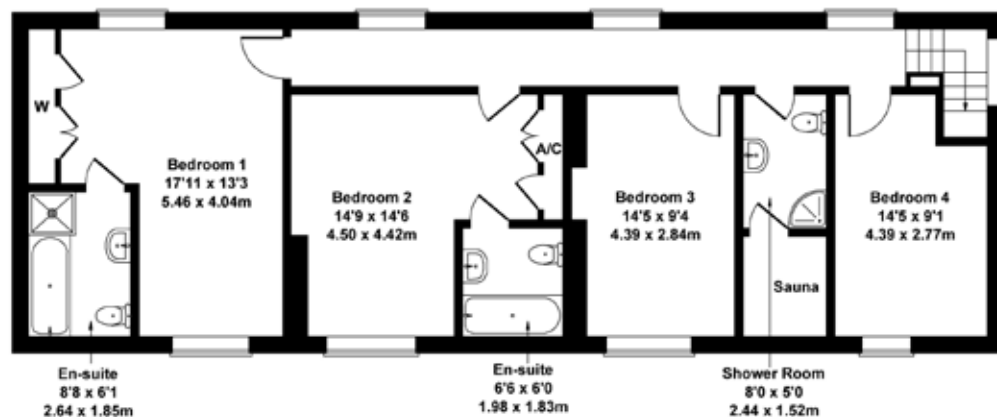


## Location

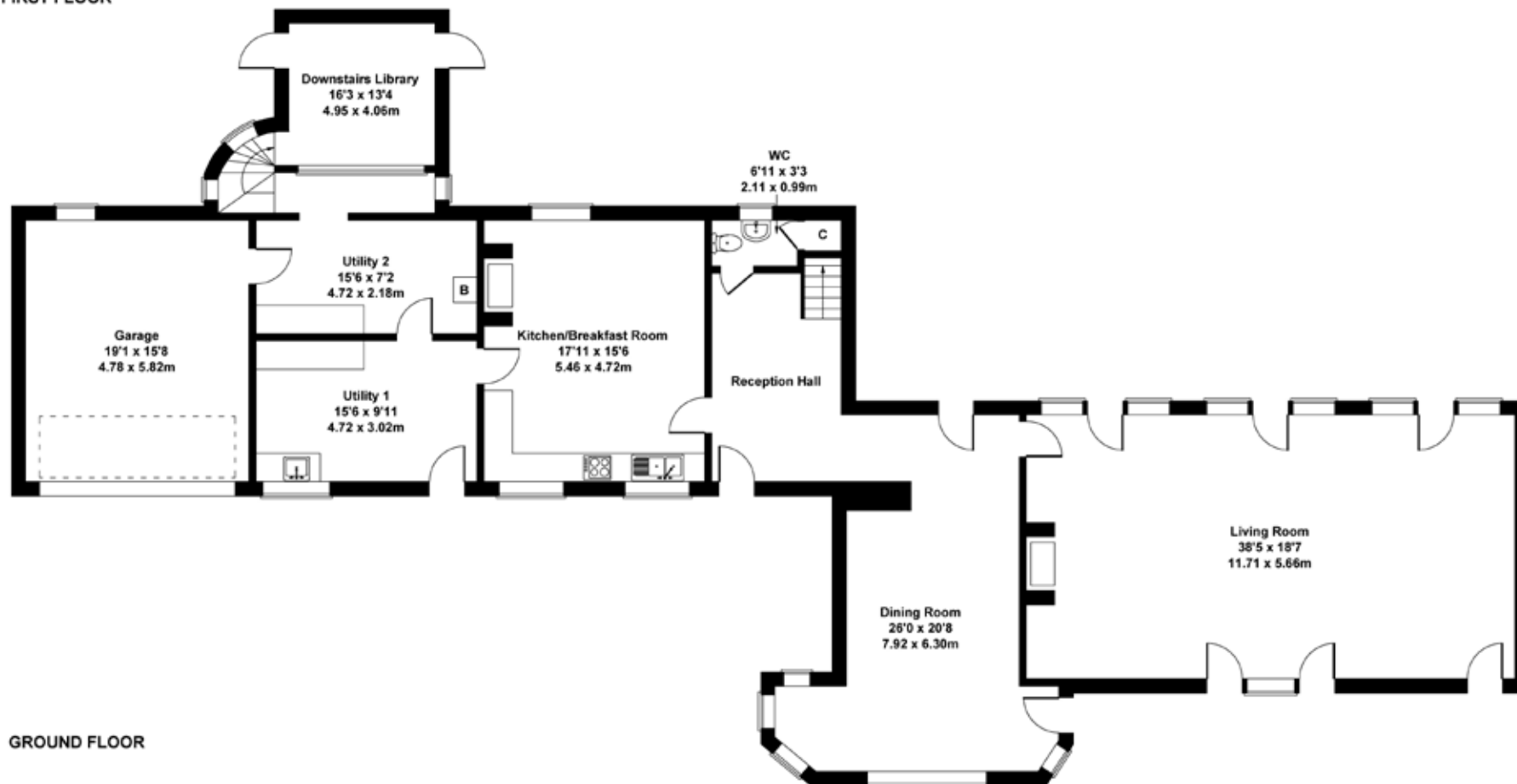
The property is located on the outskirts of the quintessential Devon village of Beaford, which is bordered by the River Torridge, well known for its superb fishing opportunities. The popular Globe Inn is within walking distance, and it serves meals, has sleeping accommodation and was the CAMRA North Devon Pub of the Year in 2022. There is a primary school in the village, and additional primary schooling is available in nearby Winkleigh (6 mi). Secondary schooling is available in Great Torrington (5 mi), Chulmleigh (10 mi) and Okehampton (19 mi), and at the well-regarded private Shebbear College, 10 miles distant.

The market town of Great Torrington provides a wide range of amenities, including independent shops, supermarkets and restaurants. Outdoor lovers are spoilt for choice with RHS Rosemoor only 4 mi away, North Devon beaches as close as 15 miles and the wilds of Dartmoor and Exmoor both 20 - 25 miles distant.





FIRST FLOOR



GROUND FLOOR

# Abbots Tallot

Approximate Gross Internal Area  
3279 sq ft - 305 sq m

For Illustrative Purposes Only.  
Not to Scale. Produced by The Plan Portal 2025





## Agent's Notes

**Title Register:** The title contains rights associated with access over a shared drive, as well as passage and repair of conduits for water, electricity and sewage waste. Buyers are advised to consult the title register for full details (copy available upon request).

**Mobile phone signal:** The vendor informs us that good indoor and outdoor coverage exists for the Vodafone network

*Abbots Tallot*

## KEY INFORMATION

4 Bedrooms	EPC Rating: E (40)
3.5 Bathrooms	Council Tax Band: G
3 Reception Rooms	Tenure: Freehold
Double Garage & Driveway Parking	Broadband: ADSL *
Not a Listed Building	Inside: None to Limited* Outside: Likely*
Heating: Oil	Yes - Step free access
Utilities: Mains electricity & water. Private drainage	
Restrictions: No activities of nuisance or annoyance	
Easements, Wayleaves: See Agent's Notes	
Public Rights of Way: Beaford Footpath 8 passes through woodland	
Flooding: None known	
Notable Construction Materials: None known	
Building Safety Concerns: None known	
Mining Area: No	
Planning Permission / Proposed Developments: None known	

\*per Ofcom

Miller Town & Country powered by eXp

01837 54080 | okehampton@millertc.co.uk

www.millertc.co.uk

2 Jacob's Pool House, 11 West Street,  
Okehampton, Devon, EX20 1HQ



### VIEWING:

Strictly through the vendor's sole agents  
Tavistock 01822 617243  
Okehampton 01837 54080

CONSUMER PROTECTION FROM  
UNFAIR TRADING REGULATIONS 2008:  
These particulars are believed to  
be correct but their accuracy is not  
guaranteed nor do they form part of any  
contract.

