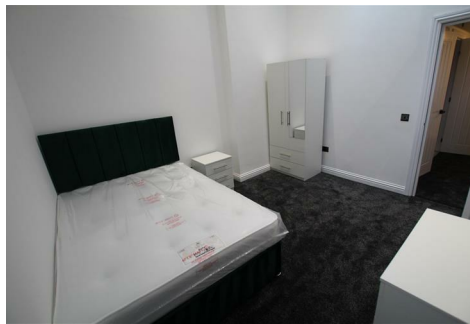


DEAN & CO

ESTATE AGENTS



Flat 5 - 2 Bakehouse Hill, Darlington, DL1 5QA

£710 Per Month

Luxury One-Bedroom Apartment for Rent in Darlington City Centre!

Discover the perfect blend of style and convenience in this stunning one-bedroom apartment, ideally located in the heart of Darlington.

Key Features:

- Spacious Living Area: Enjoy an open-plan layout with floor-to-ceiling windows that flood the space with natural light.
- Modern Kitchen: Fully equipped with high-end appliances, sleek countertops, and ample storage for all your culinary adventures.
- Stylish Bedroom: A tranquil retreat with plush carpeting and generous closet space.
- Luxurious Bathroom: Featuring contemporary fixtures and a relaxing bathtub for ultimate comfort.
- Prime Location: Step outside to vibrant cafes, shops, and parks, with excellent transport links just moments away.

Enquires - info@dean-co.uk - 0191 823 8540

Dean & Co Estates welcomes you to this modern one bedroom apartment in the heart of Darlington City Centre.

Discover contemporary living in this beautifully refurbished one bedroom apartment located on Bakehouse Hill, right in the heart of Darlington City Centre. Perfect for those seeking a vibrant urban lifestyle, this fully furnished apartment offers a combination of comfort, style, and convenience.

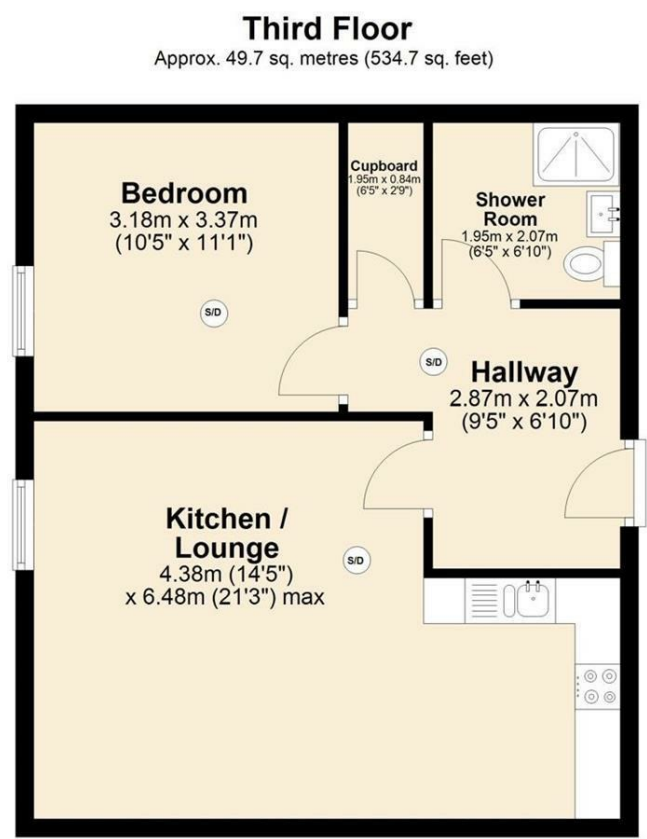
This property features an immaculate, fully updated bathroom and a spacious, good sized living room, ideal for relaxation or entertaining guests. The kitchen is thoughtfully designed and fully fitted with modern appliances, ensuring that cooking at home is a breeze.

The apartment's prime location offers immediate access to the city centre's amenities such as shops, cafes, restaurants, and cultural attractions are all within easy walking distance. For commuters, the Darlington train station is just minutes away, providing convenient links to nearby cities.

Whether you're a young professional, a couple, or someone looking for a modern city centre retreat, this property provides an exceptional living space designed to meet your needs.

This is a fantastic opportunity to live in a stylish, ready to go home in one of Darlington's most desirable locations. We also have a few more apartments available in this vicinity. Don't miss out contact us today to arrange a viewing!

Floor Plan



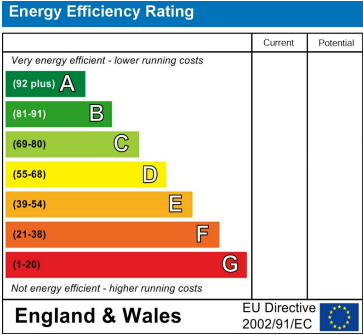
Total area: approx. 49.7 sq. metres (534.7 sq. feet)

This floorplan is for illustrative purposes only and is not drawn to scale. Measurements of benches, stairways, openings etc are approximate. They should not be relied upon for any purpose and do not form part of any agreement. No liability is taken for any error or mis-statement.
Plan produced using PlanUp.

Area Map



Energy Efficiency Graph



These particulars, whilst believed to be accurate are set out as a general outline only for guidance and do not constitute any part of an offer or contract. Intending purchasers should not rely on them as statements of representation of fact, but must satisfy themselves by inspection or otherwise as to their accuracy. No person in this firms employment has the authority to make or give any representation or warranty in respect of the property.