



ELM TREE COURT

Leicester | LE2 3NH

SIGNATURE.
HOMES OF MIDLANDS

ELM TREE COURT

Welcome to Elm Tree Court, a stylish four/five bedroom three storey home boasting a enviable plot within a gated development in the ever popular South Knighton.

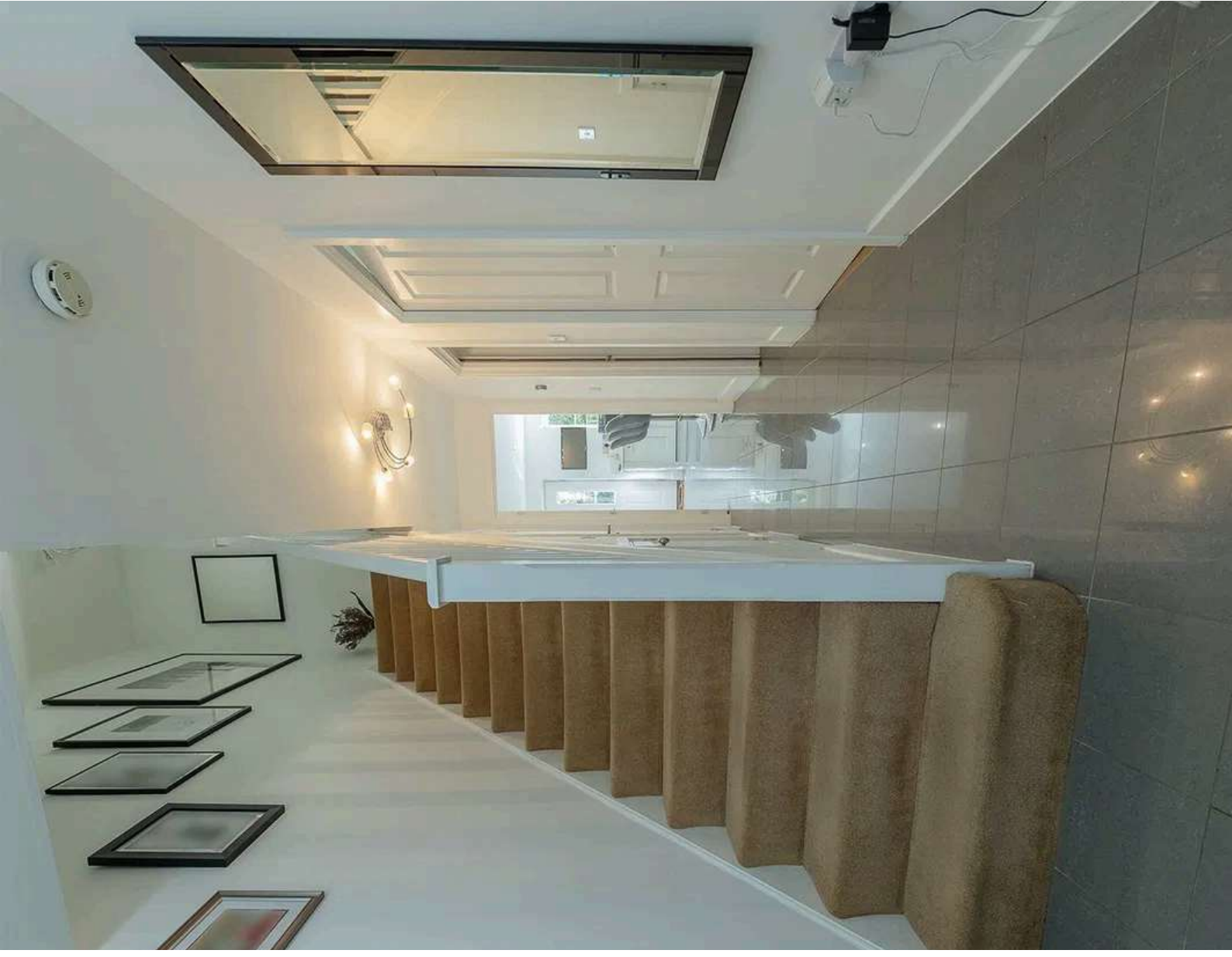
FIRST IMPRESSIONS

Welcome to Elm Tree Court, located in an exclusive gated development is this exceptional and stylish semi-detached home arranged over three thoughtfully designed floors, offering spacious and versatile accommodation ideal for modern family living.

On entering the home, you are welcomed into a bright and inviting entrance hall that immediately sets the tone for the rest of the property. The ground floor offers a warm and well-proportioned sitting room to the front, a tranquil space perfect for relaxation or entertaining guests.

A conveniently located WC is also situated on this floor, offering practicality for visiting guests and everyday use. To the rear of the home lies the heart of the property - an impressively updated kitchen that showcases a beautiful range of bespoke shaker-style wall and base units, complemented by solid stone worktops and flooring, lending a timeless and refined aesthetic.

The kitchen is designed with both function and form in mind, providing ample space for a range cooker, while bifold doors extend the living space into the garden, creating a seamless transition between indoor and outdoor living. Adjacent to the kitchen is a separate utility room with plumbing and space for both a washing machine and dryer, maintaining the clean lines and organisation of the main living areas.





















The first floor presents a unique layout featuring a generous and elegant lounge, complete with French doors that open to views over the landscaped rear garden. A bespoke media wall adds a focal point to the room, offering both style and entertainment. Also on this level is a well-appointed guest bedroom which benefits from a large, stylish en suite shower room. A private balcony area is accessed from the landing, providing an intimate outdoor retreat and further enhancing the feeling of space and light throughout the home.

Ascending to the second floor, the principal bedroom is a true sanctuary, generously proportioned to accommodate a super king-sized bed, and fitted with bespoke wardrobes for ample storage. This room also enjoys its own sleek en suite shower room. Two further bedrooms, each featuring fitted wardrobes, offer comfortable accommodation suitable for children, guests, or home office use. The family bathroom on this level is finished to a high standard with a modern three-piece suite, serving the additional bedrooms with ease and elegance.









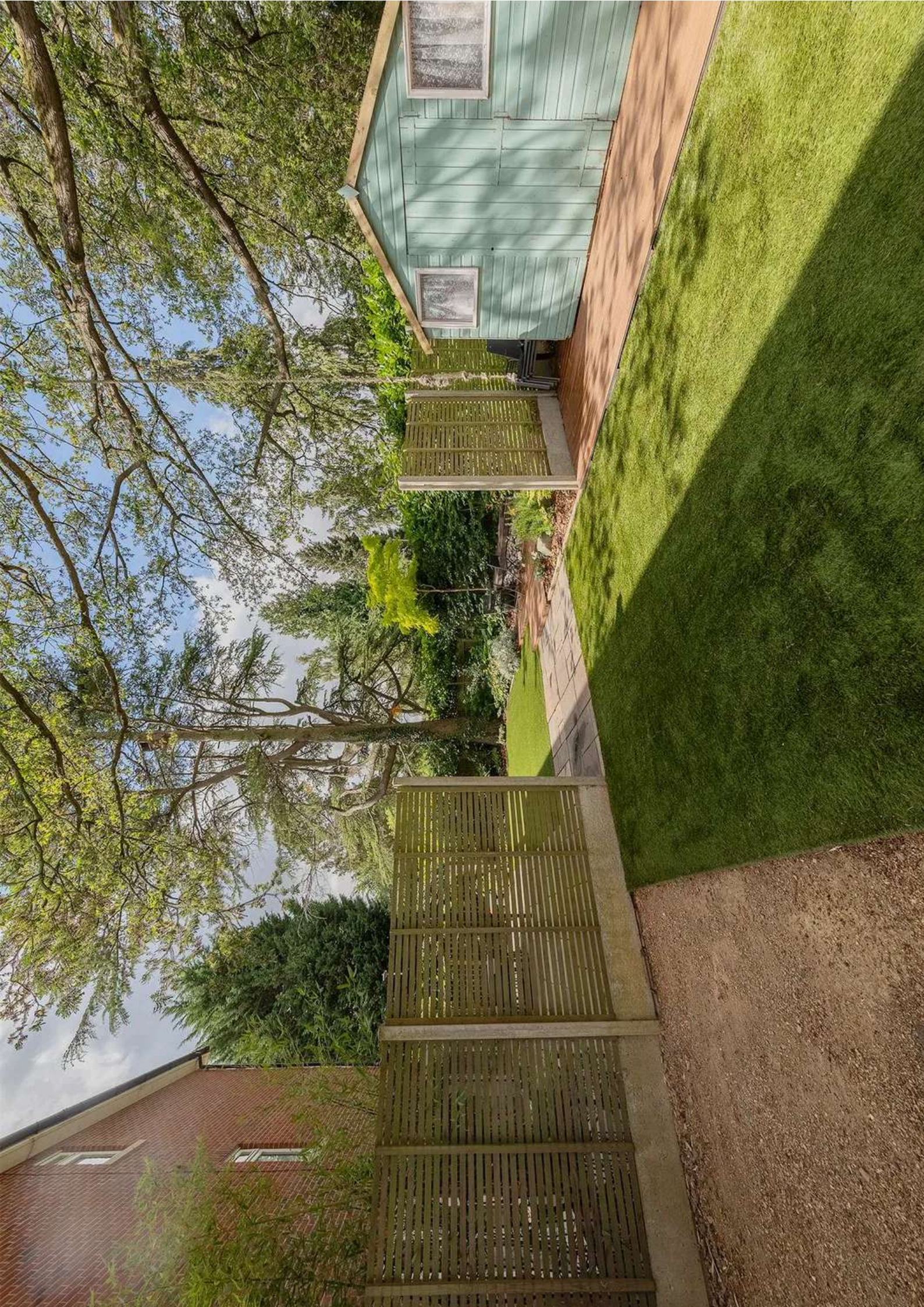




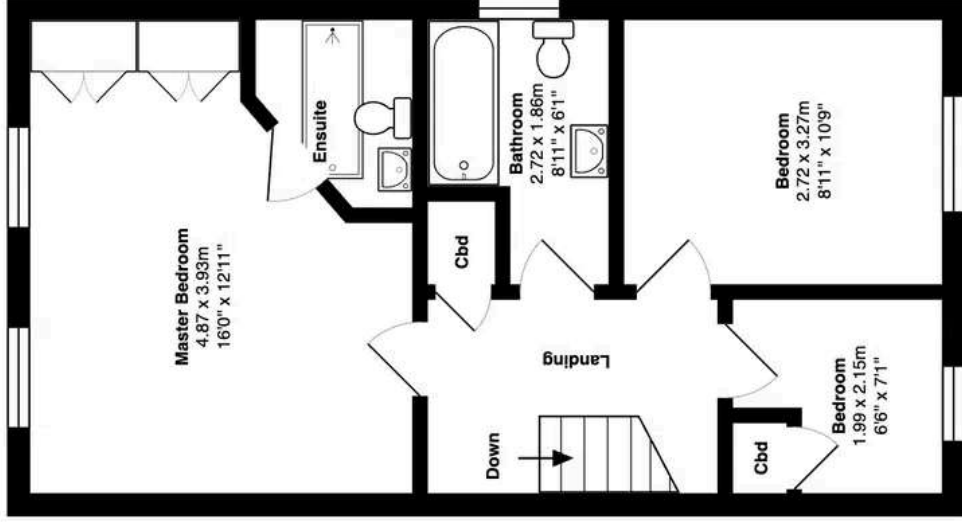
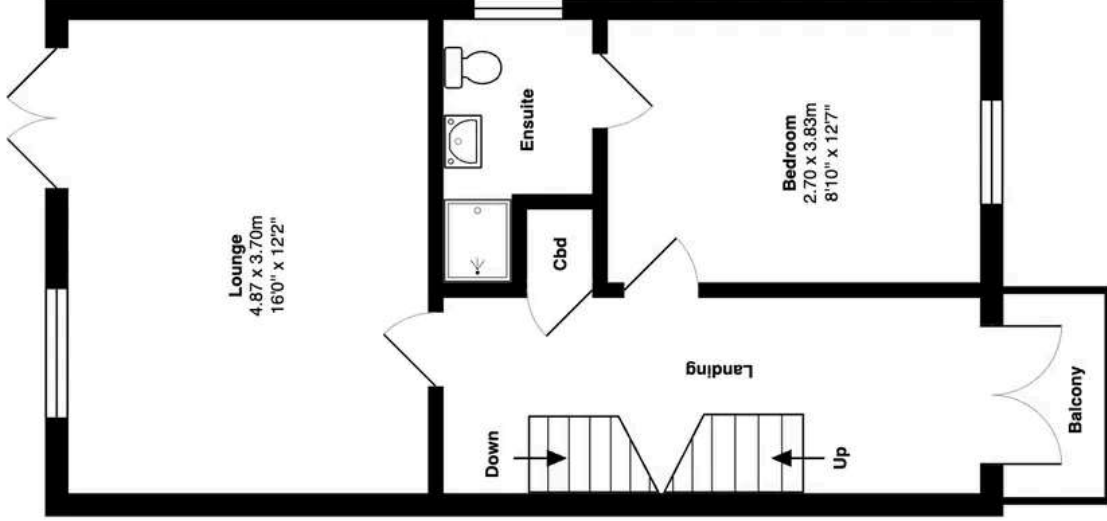
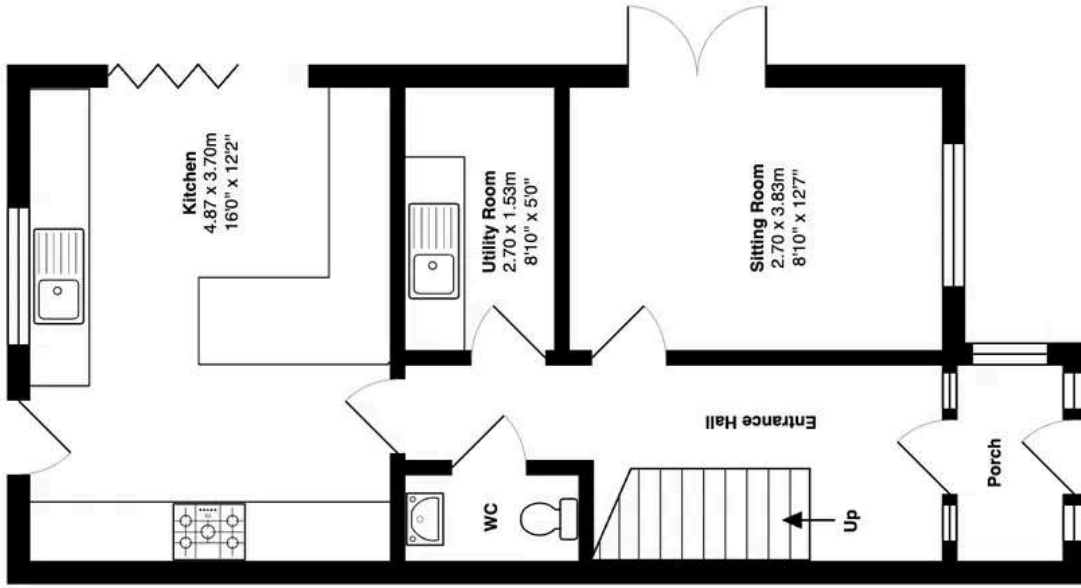








Elm Tree Court, Leicester, LE2 3NH



Ground Floor

First Floor

Second Floor

Total Area: 139.5 m² ... 1502 ft² (excluding balcony)

All measurements are approximate and for display purposes only

Signature Midlands

Tel: +44 (0) 116 482 2299

hello@signaturemidlands.co.uk

40 The Parade, Oadby, Leicester LE2 5BF

SIGNATURE.
HOMES OF MIDLANDS