



The Vernon Wing, Old Church Street

Offers Over £575,000

Your Logo

The Vernon Wing, Old Church Street

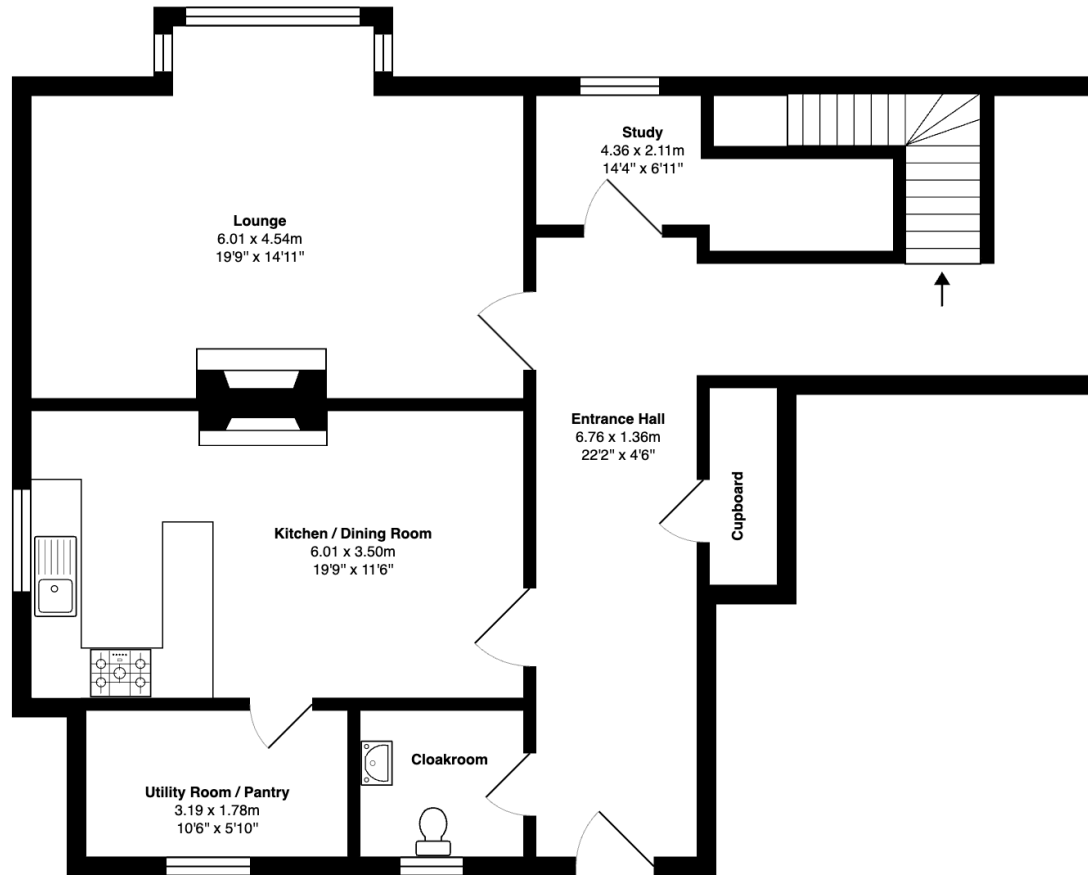
Purchase a piece of Leicester history. Welcome to The Vernon Wing, a Grade 2* listed dwelling boasting a wealth of character and charm.







Old Church Street, Leicester, LE2 8ND



Ground Floor

Total Area: All Floors Combined 189.4 m² ... 2038 ft²

All measurements are approximate and for display purposes only

Signature Homes of Midlands
40 The Parade, Oadby, Leicester, LE2 5BF
hello@SignatureMidlands.co.uk

Registered in England and Wales. Company Reg. No. 14212660.
Registered office address: 40 The Parade, Oadby, Leicester, LE2 5BF

PRS Property
Redress
Scheme

SignatureMidlands.co.uk
+44 (0) 116 482 2299

Agents Note: Whilst every care has been taken to prepare these sales particulars, they are for guidance purposes only. All measurements are approximate are for general guidance purposes only and whilst every care has been taken to ensure their accuracy, they should not be relied upon and potential buyers are advised to recheck the measurements