



Rosefield Close

Fernwood, Newark, NG24 3FW



Book a Viewing

£370,000

Situated in a quiet cul-de-sac location on the popular Fernwood development this spacious detached family home offers accommodation extending to over 1200 sq ft, this well appointed and well maintained home briefly comprises, entrance hall, cloakroom, lounge, kitchen/diner, utility room, first floor, master bedroom with en-suite, three further bedrooms and family bathroom. Outside, car port which leads through to a single detached garage with a landscaped and private rear garden.





SERVICES

All mains services available. Gas central heating.

EPC RATING — to follow.

COUNCIL TAX BAND — D.

LOCAL AUTHORITY - Newark and Sherwood District Council.

TENURE - Freehold.

VIEWINGS - By prior appointment through Alasdair Morrison and Mundys.

LOCATION

DESCRIPTION Situated in a quiet cul-de-sac location on the popular Fernwood development this spacious detached family home offers accommodation extending to over 1200 sq ft, this well appointed and well maintained home briefly comprises, entrance hall, cloakroom, lounge, kitchen/diner, utility room, first floor, master bedroom with en-suite, three further bedrooms and family bathroom. Outside, car port which leads through to a single detached garage with a landscaped and private rear garden.





ENTRANCE HALL Glazed panel door gives access to the entrance hall. With staircase to the first floor and a radiator.

LOUNGE 16' 4" x 9' 9" (4.98m x 2.97m) With double glazed double doors to the rear landscaped garden, radiator and Chesneys log burner.

KITCHEN DINER 10' 11" x 19' 0" (3.33m x 5.79m) Dining Area with double glazed window to the side elevation, radiator and double doors to the Lounge.

Kitchen Area with cupboards and drawers, roll top work surface with inset sink, electric fan oven, further electric grill, gas hob with extractor fan over, integrated dishwasher, integrated fridge, double glazed window to the front elevation, wine rack and a gas central heating boiler.



UTILITY ROOM 6' 2" x 4' 7" (1.88m x 1.4m) With double glazed window to the side elevation, tiled flooring, radiator and a double base unit.

CLOAKROOM/WC With low level WC, wash hand basin, splash tiled surround and radiator.

FIRST FLOOR LANDING With double glazed window to the rear elevation, access to the roof space, radiator, double landing cupboard and an airing cupboard/linen store with shelving.

MASTER BEDROOM 9' 5" x 12' 4" (2.87m x 3.76m) With double glazed window to the front elevation, fitted double wardrobes and door to en-suite.



EN-SUITE SHOWER ROOM 6' 0" x 6' 5" (1.83m x 1.96m) With shower cubicle, low level WC, pedestal wash hand basin, half tiled surround, radiator and double glazed window to the rear elevation.

BEDROOM 2 13' 9" x 9' 3" (4.19m x 2.82m) With double glazed window to the front elevation, two double fitted wardrobes, single fitted wardrobe and radiator.

BEDROOM 3 9' 3" x 9' 10" (2.82m x 3m) With double glazed window to the rear elevation, double wardrobe and radiator.

BEDROOM 4 10' 10" x 7' 6" (3.3m x 2.29m) With double glazed window to the side elevation, two fitted wardrobes and radiator.



BATHROOM 6' 8" x 5' 10" (2.03m x 1.78m) With double glazed window to the rear elevation, suite comprising of panel bath with integral shower attachment, low level WC and pedestal wash hand basin, radiator and half tiled surround.

OUTSIDE

CAR PORT 8' 9" x 19' 0" (2.67m x 5.79m) With up and over door giving access to the carport with a tap and driveway leading to the single garage.



GARAGE 10' 6" x 16' 6" (3.2m x 5.03m) With up and over door, glazed panel door to the side elevation and eaves storage space.

OUTSIDE The rear enclosed landscaped garden benefits from engine stone patio and a canopy for shade. To the side of the property there is a further gravelled area and storage to the rear of the garage.

WEBSITE

Our detailed website shows all our available properties and also gives extensive information on all aspects of moving home, local area information and helpful information for buyers and sellers. This can be found at mundys.net

SELLING YOUR HOME - HOW TO GO ABOUT IT

We are happy to offer FREE advice on all aspects of moving home, including a Valuation by one of our QUALIFIED/SPECIALIST VALUERS. Ring or call into one of our offices or visit our website for more details.

REFERRAL FEE INFORMATION - WHO WE MAY REFER YOU TO

Sills & Betteridge, Ringrose Law LLP, Burton and Co, Bridge McFarland, Dale & Co, Bird & Co and Gilson Gray who will be able to provide information to you on the Conveyancing services they can offer. Should you decide to use these Conveyancing Services then we will receive a referral fee of up to £150 per sale and £150 per purchase from them.

CWH, Callum Lyman and J. Walter will be able to provide information and services they offer relating to Surveys. Should you decide to instruct then we will receive a referral fee of up to £125.

Claverings will be able to provide information and services they offer relating to removals. Should you decide to instruct then we will receive a referral fee of up to £125.

Mundys Financial Services will be able to offer a range of financial service products. Should you decide to instruct Mundys Financial Services we will receive a commission from them of £250 and in addition, the individual member of staff who generated the lead will receive £50.

BUYING YOUR HOME

An Independent Survey gives peace of mind and could save you a great deal of money. For details, including RICS Home Buyer Reports, call 01522 556088 and ask for Steven Spivey MRICS.

GETTING A MORTGAGE

We would be happy to put you in touch with our Financial Adviser who can help you to work out the cost of financing your purchase.

NOTE

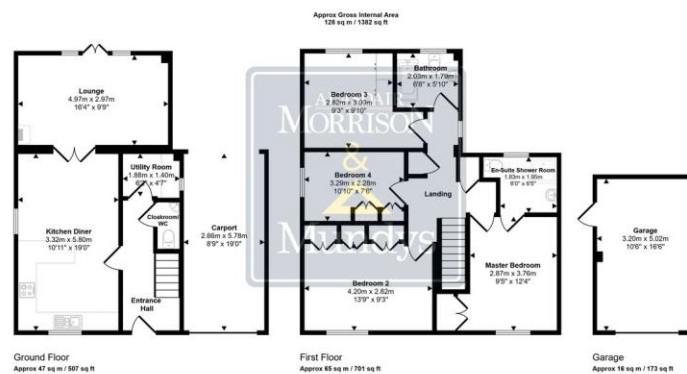
1. None of the services or equipment have been checked or tested.
2. All measurements are believed to be accurate but are given as a general guide and should be thoroughly checked.

GENERAL

If you have any queries with regard to a purchase, please ask and we will be happy to assist. Mundys makes every effort to ensure these details are accurate, however they for themselves and the vendors (Lessors) for whom they act as Agents give notice that:

1. The details are a general outline for guidance only and do not constitute any part of an offer or contract. No person in the employment of Mundys has any authority to make or give representation or warranty whatever in relation to this property.
2. All descriptions, dimensions, references to condition and necessary permissions for use and occupation and other details should be verified by your self on inspection, your own advisor or conveyancer, particularly on items stated herein as not verified.

Regulated by RICS. Mundys is the trading name of Mundys Property Services LLP registered in England NO. OC353 705. The Partners are not Partners for the purposes of the Partnership Act 1890. Registered Office 29 Silver Street, Lincoln, LN2 1AS.



This floorplan is only for illustrative purposes and is not to scale. Measurements of rooms, doors, windows, and any items are approximate and no responsibility is taken for any error, omission or misstatement. Some of items such as bathroom suites are representations only and may not look like the real items. Made with Matter Survey 360.

46 Middle Gate
Newark
NG24 1AL

newark@amorrison-mundys.net
01636 700888

22 King Street
Southwell
NG25 0EN

southwell@amorrison-mundys.net
01636 813971

29 Silver Street
Lincoln
LN2 1AS

info@mundys.net
01522 510044

22 Queen Steet
Market Rasen
LN8 3EH

info@mundys.net
01673 847487

Agents Note: Whilst every care has been taken to prepare these sales particulars, they are for guidance purposes only. All measurements are approximate and are for general guidance purposes only and whilst every care has been taken to ensure their accuracy, they should not be relied upon and potential buyers are advised to check the measurements.