



## Jester House, Main Street, Fiskerton, Southwell, NG25 0UL

**£795,000**

Architect designed and built by the present owners this spacious three storey executive home offers flexible living in the popular Trent Valley village of Fiskerton. Benefitting from Heat Recovery System, underfloor heating downstairs and 16 Solar Panels as well as a fitted vacuum system and media system with ceiling mounted speakers in most rooms. F4RN-high speed fibre and 2 CCTV cameras at the front of the property. The property briefly comprises, open entrance porch, entrance hall, living room, dining room, breakfast kitchen, utility room, doakroom and office. First floor, Master bedroom with en-suite, three further double bedrooms and family bathroom. Second floor, a further bedroom and a cinema room. Outside, the property offers a large private lawn garden to front with substantial gated driveway which leads to a double garage. Side seating area leads to a totally enclosed and private rear garden with superb home office/garden room or occasional bedroom.







#### SERVICES

All mains services available. Gas central heating.

**EPC RATING – B.**

**COUNCIL TAX BAND – F.**

**LOCAL AUTHORITY** - Newark and Sherwood District Council.

**TENURE** - Freehold.

**VIEWINGS** - By prior appointment through Alasdair Morrison and Mundys.

#### LOCATION

Fiskerton is a popular Trent Valley village approximately 3.5 miles from the Minster town of Southwell. The village benefits from being in the Southwell Minster School catchment area a post office/store, public house and a rail link connecting Newark and Nottingham.



#### Entrance Hall

11' 5" x 15' 3" (3.48m x 4.65m) A double glazed leaded front door with leaded double glazed windows to either side leads into the entrance hall. French parquet oak flooring with central oak staircase rising to the first floor. Doors off.

#### Living Room

24' 4" x 12' 10" (7.42m x 3.91m) Oak flooring. Double glazed sash windows to the front and side elevations. Double glazed French doors to the rear garden. Working cast iron fireplace with marble surround and granite hearth. Wall lights. In-built ceiling mounted speakers.

#### Office

12' 10" x 6' 6" (3.91m x 1.98m) Double glazed sash window to the front elevation.

#### Cloaks

1.78m x 0.97m (5'10" x 3'02") Fitted with a high flush WC and wash hand basin. Tiled floor and splash back tiling to walls.

#### Breakfast Kitchen

13' 2" x 13' 9" (4.01m x 4.19m) Fitted with a range of bespoke pine shaker style wall and base units surmounted by a granite worksurface with grooved drainer and inset with under mounted Belfast sink. Integrated dishwasher. SMEG range with 5 ring gas hob with extractor over. Plumbing for American style fridge/freezer. In-built ceiling mounted speakers. Double glazed sash windows to the rear and side elevations.



#### Utility Room

5' 8" x 5' 7" (1.73m x 1.7m) Base units with inset sink with food waste insinkerator. Plumbing for washing machine and space for tumble dryer. Worcester central heating boiler. Double glazed composite door to the rear garden.

#### Dining Room

3.61m x 2.51m (11'10" x 8'03") Oak flooring. Feature fire place, cast iron surround with tiled inset and granite hearth. Double glazed French doors to the rear elevation.

#### First Floor Landing

21' 1" x 11' 7" (6.43m x 3.53m) Sash double glazed window to the front elevation. Radiator. In-built ceiling speakers. Recessed cupboard housing the home entertainment system.



#### Bedroom One

16' 0" x 12' 11" (4.88m x 3.94m) Double glazed sash window to the rear. Radiator. In-built ceiling speakers.

#### En-Suite

5' 8" x 5' 11" (1.73m x 1.8m) Fitted with a suite comprising corner shower cubicle with drench head shower, in-built WC and vanity wash hand basin. Heated towel rail. In-built ceiling speaker, under floor heating. Double glazed window to the side elevation.







#### **Bathroom**

11' 8" x 6' 7" (3.56m x 2.01m) Fitted with a suite comprising Ball and Claw roll top bath with central mixer taps, vanity wash hand basin, low flush WC and walk-in shower with drench head. Heated towel rail. Tiled floor. Double glazed sash window to the rear.

#### **Bedroom Two**

13' 0" x 9' 5" (3.96m x 2.87m) Double glazed sash window to the rear

#### **Bedroom Four**

14' 1" x 7' 8" (4.29m x 2.34m) Triple wardrobe, radiator, double glazed sash window to the front, this room is currently used as dressing room, door off this room leads to stairs and access to the second floor



#### **Bedroom Three**

12' 10" x 7' 7" (3.91m x 2.31m) Double glazed sash window to the front, radiator

#### **Second Floor**

#### **Cinema Room**

28' 3" x 14' 7" (8.61m x 4.44m) Two Velux windows, two radiators, inbuilt ceiling speakers and door leading to bedroom five

#### **Bedroom Five**

14' 2" x 9' 0" (4.32m x 2.74m) Velux window to the rear, radiator

#### **Outside**

A five bar gate leads to an extensive driveway and lawn garden with established fully stocked beds and borders and external lighting. There is a detached double garage measuring (18'7 x 17'7) with electric up and over doors, double glazed window, side door, light, power and eaves storage.

To the rear of the property is a multi functional garden room/home office (11'10 x 8'7) with decking, ideal for al-fresco dining or occasional bedroom/office suite. with electric wall heater, light and power. bifold doors onto the decking, double glazed window to the side and external lighting.

The decked area extends to (10'5 x 17'8), the rear lawned garden is particularly private with raised sleeper beds and flagstone patio areas, external lighting and tap, side flagstone dining area and side gate.







#### WEBSITE

Our detailed website shows all our available properties and also gives extensive information on all aspects of moving home, local area information and helpful information for buyers and sellers. This can be found at [mundys.net](http://mundys.net)

#### SELLING YOUR HOME – HOW TO GO ABOUT IT

We are happy to offer FREE advice on all aspects of moving home, including a Valuation by one of our QUALIFIED/SPECIALIST VALUERS. Ring or call into one of our offices or visit our website for more details.

#### REFERRAL FEE INFORMATION – WHO WE MAY REFER YOU TO

Sills & Betteridge, Ringrose Law LLP, Burton and Co, Bridge McFarland, Dale & Co, Bird & Co and Gilson Gray who will be able to provide information to you on the Conveyancing services they can offer. Should you decide to use these Conveyancing Services then we will receive a referral fee of up to £150 per sale and £150 per purchase from them.

CWH, J Walter and Callum Lyman will be able to provide information and services they offer relating to Surveys. Should you decide to instruct then we will receive a referral fee of up to £125.

Coverings will be able to provide information and services they offer relating to removals. Should you decide to instruct then we will receive a referral fee of up to £125.

Mundys Financial Services who will be able to offer a range of financial service products. Should you decide to instruct Mundys Financial Services we will receive a commission from them of £250 and in addition, the individual member of staff who generated the lead will receive £50.

#### BUYING YOUR HOME

An Independent Survey gives peace of mind and could save you a great deal of money. For details, including RICS Home Buyer Reports, call 01522 556088 and ask for Steven Spivey MRICS.

#### GETTING A MORTGAGE

We would be happy to put you in touch with our Financial Adviser who can help you to work out the cost of financing your purchase.

#### NOTE

1. None of the services or equipment have been checked or tested.
2. All measurements are believed to be accurate but are given as a general guide and should be thoroughly checked.

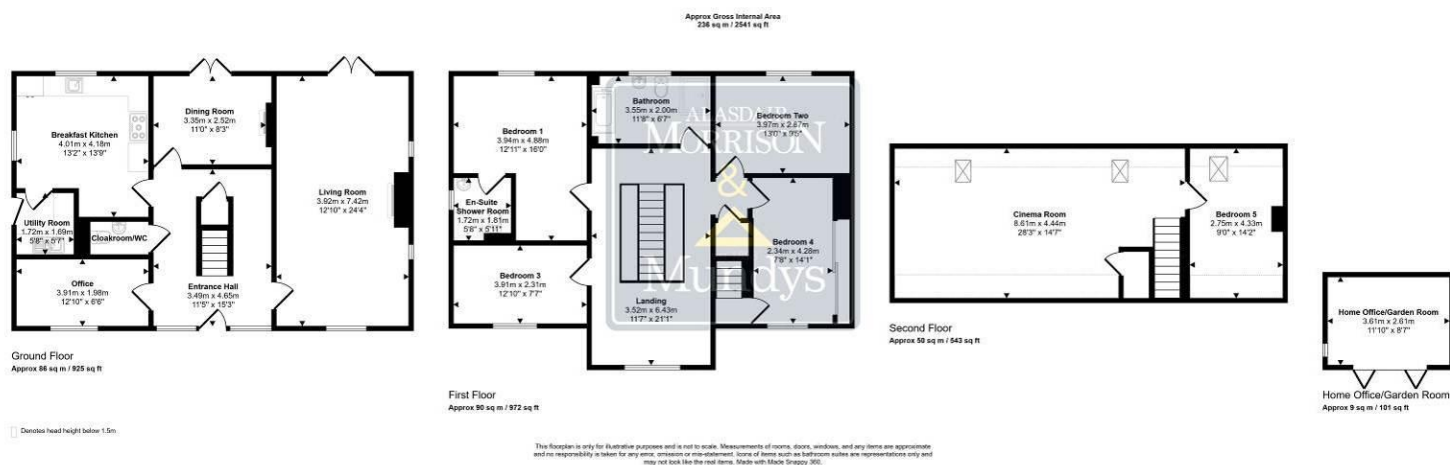
#### GENERAL

If you have any queries with regard to a purchase, please ask and we will be happy to assist. Mundys makes every effort to ensure these details are accurate, however they for themselves and the vendors (Lessors) for whom they act as Agents give notice that:

1. The details are a general outline for guidance only and do not constitute any part of an offer or contract. No person in the employment of Mundys has any authority to make or give representation or warranty whatever in relation to this property.
2. All descriptions, dimensions, references to condition and necessary permissions for use and occupation and other details should be verified by your self on inspection, your own advisor or conveyancer, particularly on items stated herein as not verified.

Regulated by RICS. Mundys is the trading name of Mundys Property Services LLP registered in England NO. OC353705. The Partners are not Partners for the purposes of the Partnership Act 1890. Registered Office 29 Silver Street, Lincoln, LN2 1AS.





**26 Kirkgate  
Newark  
NG24 1AB**  
newark@amorrison-mundys.net  
01636 700888

**22 King Street  
Southwell  
NG25 0EN**  
southwell@amorrison-mundys.net  
01636 813971

**29 Silver Street  
Lincoln  
LN2 1AS**  
info@mundys.net  
01522 510044

**22 Queen Street  
Market Rasen  
LN8 3EH**  
info@mundys.net  
01673 847487

Agents Note: Whilst every care has been taken to prepare these sales particulars, they are for guidance purposes only. All measurements are approximate and for general guidance purposes only and whilst every care has been taken to ensure their accuracy, they should not be relied upon and potential buyers are advised to recheck the measurements.