

CAERPHILLY'S HOME FOR
STYLISH SALES
& LETTINGS

BRINSONS



NEW ROW
CAERPHILLY



LIVING ROOM
4.81 x 3.51 (15'9" x 11'6")

KITCHEN/DINER
4.81 x 2.82 (15'9" x 9'3")

UTILITY ROOM
1.83 x 1.48 (6'0" x 4'10")

BEDROOM ONE
3.83 x 3.13 (12'6" x 10'3")

BEDROOM TWO
2.38 x 3.19 (7'9" x 10'5")

BATHROOM
2.27 x 2.28 (7'5" x 7'5")

TENURE
Freehold

COUNCIL TAX
Council Tax - Band D

SCHOOL CATCHMENT
Welsh Medium Primary School : Y.G.G. Y CASTELL
Welsh Medium Secondary School : Y GWYNDY - YSGOL GYFUN
CWM RHYMNI
English Medium Primary School : MACHEN PRIMARY
English Medium Secondary School : BEDWAS HIGH SCHOOL

EPC TO FOLLOW





NEW ROW

MACHEN, CF83 8NS - £220,000



2 Bedroom(s)

1 Bathroom(s)

702.00 sq ft

Nestled at the top of the charming village of Machen, Caerphilly, this delightful mid-terrace house on New Row offers a perfect blend of comfort and scenic beauty. With two cosy bedrooms, this property is ideal for small families, couples, or individuals seeking a peaceful retreat.

Upon entering, you are welcomed into a lovely reception room, which features a charming log burner, perfect for those chilly evenings. The warmth of the fire creates an inviting atmosphere, making it an ideal space for relaxation or entertaining guests. The property boasts a well-appointed bathroom, ensuring convenience for all residents.

One of the standout features of this home is the spectacular views that can be enjoyed from various vantage points. The large gardens, both at the front and rear, provide ample outdoor space for gardening enthusiasts or those who simply wish to bask in the beauty of nature. These gardens offer a wonderful opportunity for outdoor activities, family gatherings, or quiet moments of reflection.

For those with vehicles, the property includes off street parking for one vehicle, adding to the convenience of living in this lovely home. Additionally, a garage provides extra storage space or the potential for a workshop, catering to a variety of needs.

In summary, this two-bedroom terrace house in Machen is a rare find, combining modern living with the tranquillity of rural life. With its stunning views, spacious gardens, and inviting interiors, it presents an excellent opportunity for anyone looking to settle in a picturesque location. Do not miss the chance to make this charming property your new home.

PROPERTY SPECIALIST

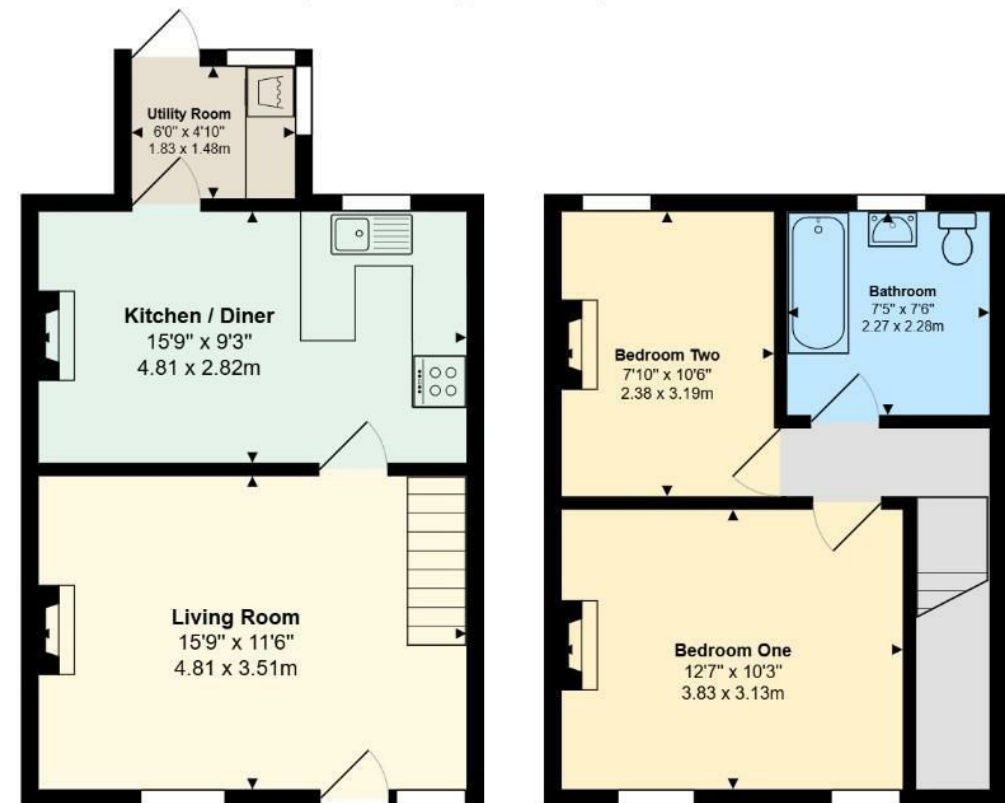
Whitney Jenkins
whitney.jenkins@brinsons.co.uk
02920 867711
Sales Negotiator





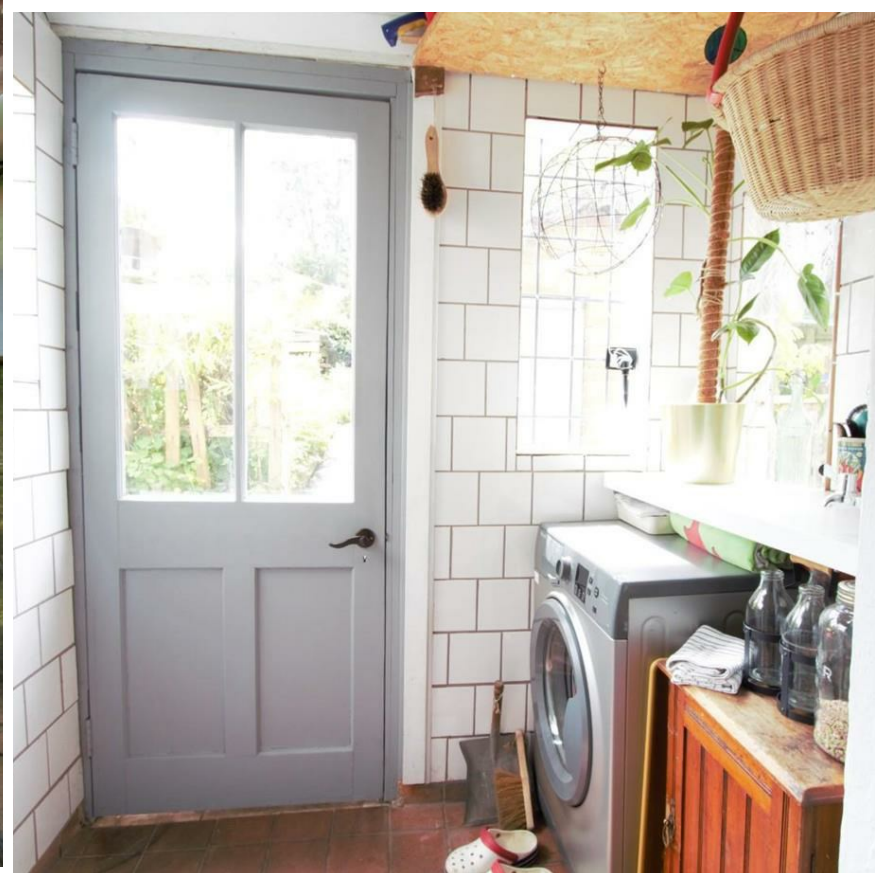
New Row, Machen, Caerphilly

14, New Row, Machen, CF83 8NS



Total Area: 702 ft² ... 65.2 m²

All measurements are approximate and for display purposes only



Energy Efficiency Rating		
	Current	Potential
Very energy efficient - lower running costs		
(92 plus) A		
(81-91) B		
(69-80) C		
(55-68) D		
(39-54) E		
(21-38) F		
(1-20) G		
Not energy efficient - higher running costs		
England & Wales	EU Directive 2002/91/EC 