

CAERPHILLY'S HOME FOR
STYLISH SALES
& LETTINGS

BRINSONS



NORTH VIEW TERRACE
CAERPHILLY



ENTRANCE HALL

LOUNGE / KITCHEN

3.54 x 6.39 (11'7" x 20'11")

BEDROOM

3.05 x 3.32 (10'0" x 10'10")

BATHROOM

1.80 x 1.96 (5'10" x 6'5")

BOILER ROOM

1.68m x 0.81m (5'6 x 2'8)

TENURE

Leasehold - Annual Ground Rent/ Service Charges = £1,800 PCM

SCHOOL CATCHMENTS

Welsh Medium Primary School : Y.G.G. CAERFFILI

Welsh Medium Secondary School : Y GWYNDY - YSGOL GYFUN

CWM RHYMNI

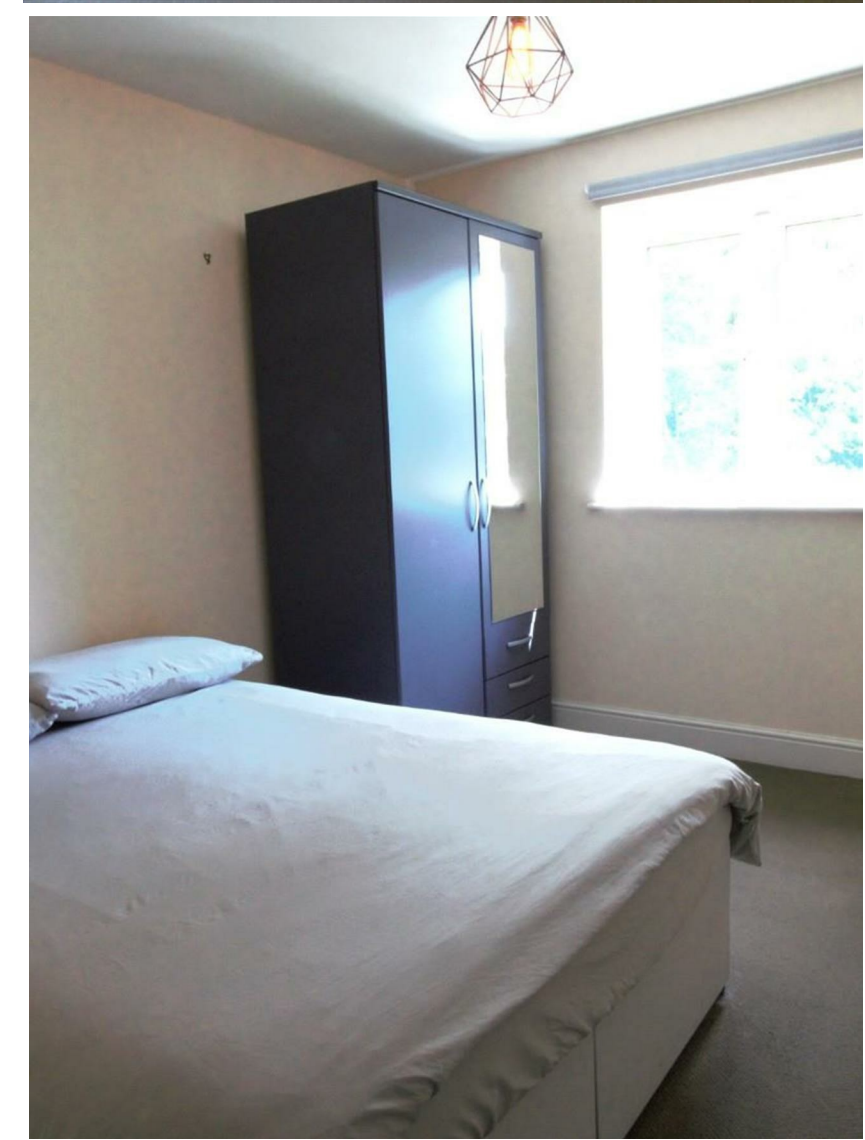
English Medium Primary School : THE TWYN SCHOOL

English Medium Secondary School : ST. MARTINS

COMPREHENSIVE SCHOOL

COUNCIL TAX

Band - B





NORTH VIEW TERRACE

, CF83 1PY - £120,000



1 Bedroom(s)

1 Bathroom(s)

461.00 sq ft

Nestled in the heart of Caerphilly, this charming top floor one-bedroom flat on North View Terrace offers a delightful blend of modern living and convenience. Built in 2007, this purpose-built apartment spans an inviting 461 square feet, providing a comfortable and well-designed space for individuals or couples seeking a tranquil retreat in a bustling town.

As you enter the property, you are welcomed into a spacious reception room that serves as the perfect setting for relaxation or entertaining guests. The well-appointed bedroom offers a peaceful sanctuary, while the bathroom is designed with practicality in mind, ensuring all your needs are met.

One of the standout features of this property is the off-road parking, a rare find in such a central location. You can enjoy the ease of having your own parking space, making daily life that much simpler. With no chain involved, this flat is ready for you to move in without delay.

The location is truly exceptional, placing you right in the centre of Caerphilly town. Here, you will find a variety of shops, cafes, and amenities just a stone's throw away, making it easy to enjoy the vibrant local culture. Additionally, the stunning Caerphilly Castle is nearby, offering a glimpse into the rich history of the area.

This one-bedroom apartment is an ideal choice for those looking for a modern home in a prime location. Whether you are a first-time buyer or seeking a rental investment, this property presents a wonderful opportunity to embrace the best of Caerphilly living. Don't miss your chance to make this delightful flat your own.

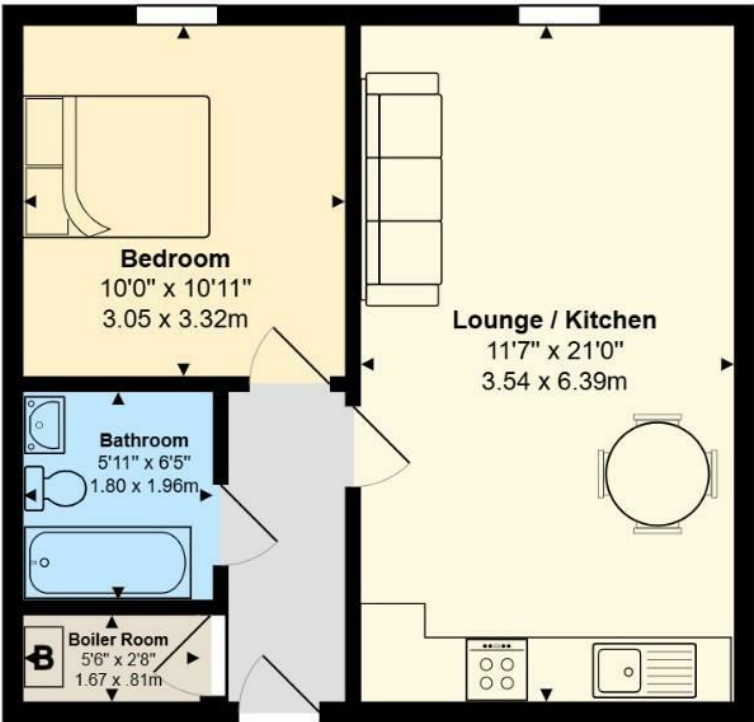


PROPERTY SPECIALIST

Whitney Jenkins
whitney.jenkins@brinsons.co.uk
02920 867711
Sales Negotiator



34, Castle Mews, North View Terrace, Caerphilly, CF83 1PY



Total Area: 461 ft² ... 42.8 m²

All measurements are approximate and for display purposes only

Energy Efficiency Rating		
	Current	Potential
Very energy efficient - lower running costs		
(92 plus) A		
(81-91) B	82	86
(69-80) C		
(55-68) D		
(39-54) E		
(21-38) F		
(1-20) G		
Not energy efficient - higher running costs		
England & Wales	EU Directive 2002/91/EC	