

CAERPHILLY'S HOME FOR
STYLISH SALES
& LETTINGS

BRINSONS

PANTANAS COTTAGES
TREHARRIS





ENTRANCE
2.13 x 1.22 (7'0" x 4'0")

LOUNGE
7.01 x 3.35 (23'0" x 11'0")

KITCHEN
3.96 x 2.13 (13'0" x 7'0")

BEDROOM ONE
2.74 x 3.35 (9'0" x 11'0")

BEDROOM TWO
2.13 x 0.30 (7'0" x 1'0")

BEDROOM THREE
3.35 x 2.13 (11'0" x 7'0")

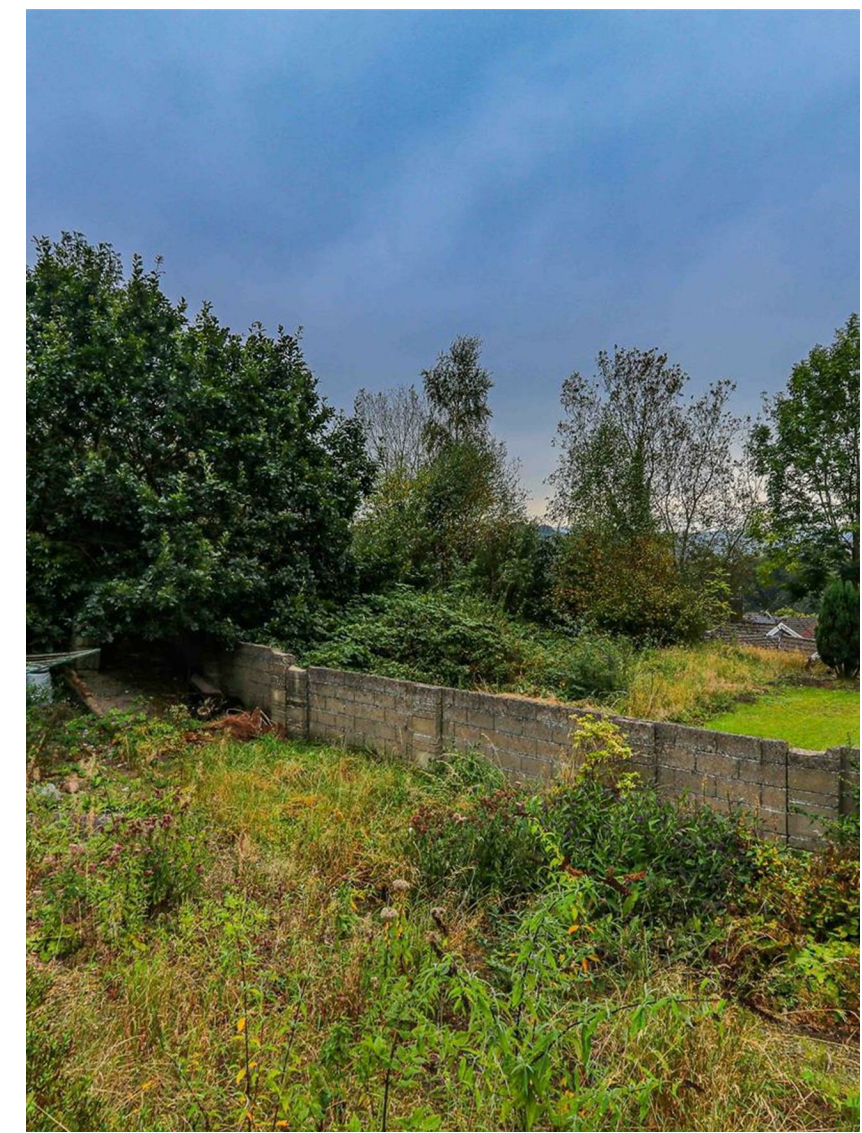
BEDROOM FOUR

BATHROOM
1.88 x 2.13 (6'2" x 7'0")

GARDEN

TENURE
We are advised by our client that the property is Freehold, this is to be confirmed by your legal advisor.

COUNCIL TAX
Council Tax - B





PANTANAS COTTAGES

TREHARRIS, CF46 5LP - £160,000



4 Bedroom(s)

1 Bathroom(s)

1121.00 sq ft

Nestled in the charming area of Pantanas Cottages, Treharris, this delightful detached cottage offers a perfect blend of comfort and character. Spanning an impressive 1,121 square feet, the property boasts four well-proportioned bedrooms, making it an ideal home for families or those seeking extra space for guests or a home office.

Upon entering, you are welcomed into a spacious reception room that serves as the heart of the home, providing a warm and inviting atmosphere for both relaxation and entertaining. The cottage features a well-appointed bathroom, ensuring convenience for all residents.

One of the standout features of this property is its stunning views, which can be enjoyed from various vantage points throughout the home. The picturesque surroundings create a serene backdrop, perfect for unwinding after a long day.

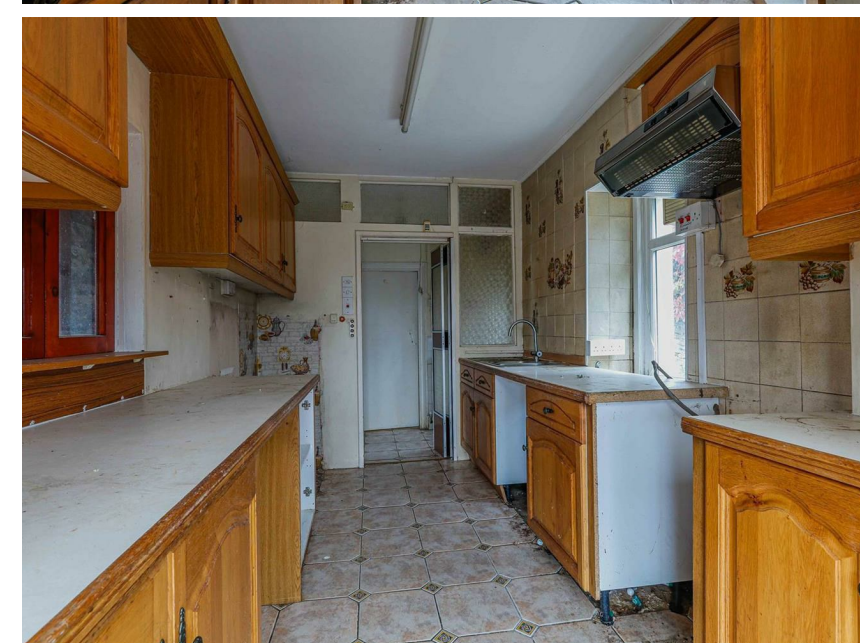
The garden offers a wonderful opportunity for outdoor enjoyment, whether it be for gardening enthusiasts or simply for those who wish to bask in the beauty of nature. This space is ideal for family gatherings, summer barbecues, or quiet evenings under the stars.

Constructed post-1914, this cottage retains a sense of historical charm while providing modern comforts. With its unique character and potential for personalisation, this property is a fantastic project for those looking to make it their own.

In summary, this four-bedroom detached cottage in Treharris is a rare find, combining spacious living with breathtaking views and a lovely garden. It presents an excellent opportunity for anyone seeking a peaceful retreat in a picturesque setting.

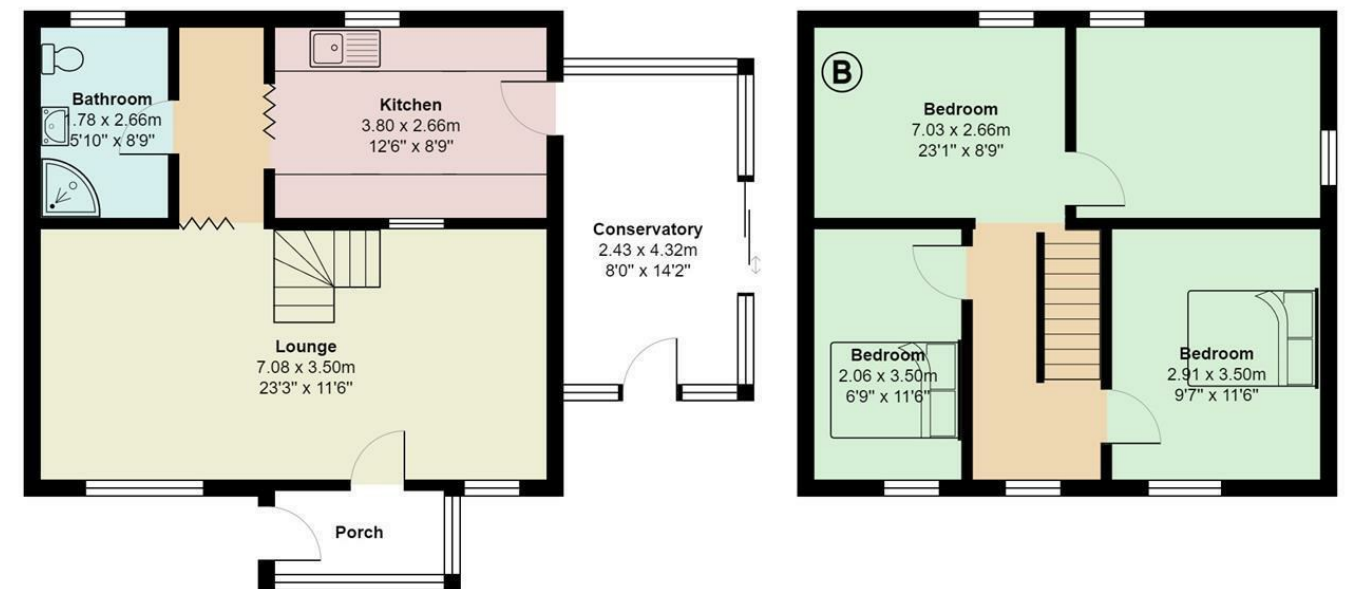
PROPERTY SPECIALIST

Nicholas Browne
nick.browne@brinsons.co.uk
02920 867711
Negotiator





Pantanas Cottages, Treharris



Total Area: 104.1 m² ... 1121 ft²

All measurements are approximate and for display purposes only



Energy Efficiency Rating		
	Current	Potential
Very energy efficient - lower running costs		
(92 plus) A	62	88
(81-91) B		
(69-80) C		
(55-68) D		
(39-54) E		
(21-38) F		
(1-20) G		
Not energy efficient - higher running costs		
England & Wales		EU Directive 2002/91/EC 