

FREEHOLD



House - Semi-Detached

**38 MANSION DRIVE,  
KNUTSFORD, WA16  
8BZ**

**£429,995**

#### FEATURES

- Recently refurbished throughout
- Off road parking
- Walking distance to Knutsford centre
- Chain free
- Immaculate open plan kitchen
- Close proximity to highly rated primary/secondary schools



**ACOBAS**

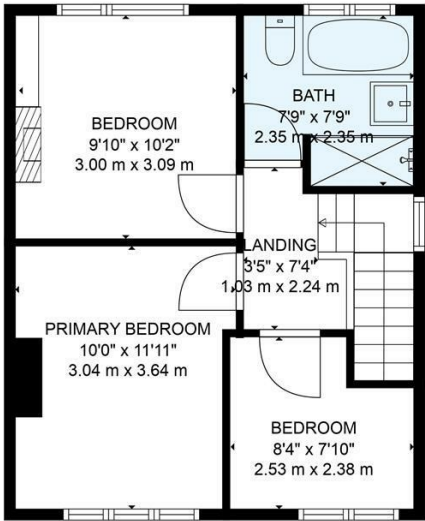
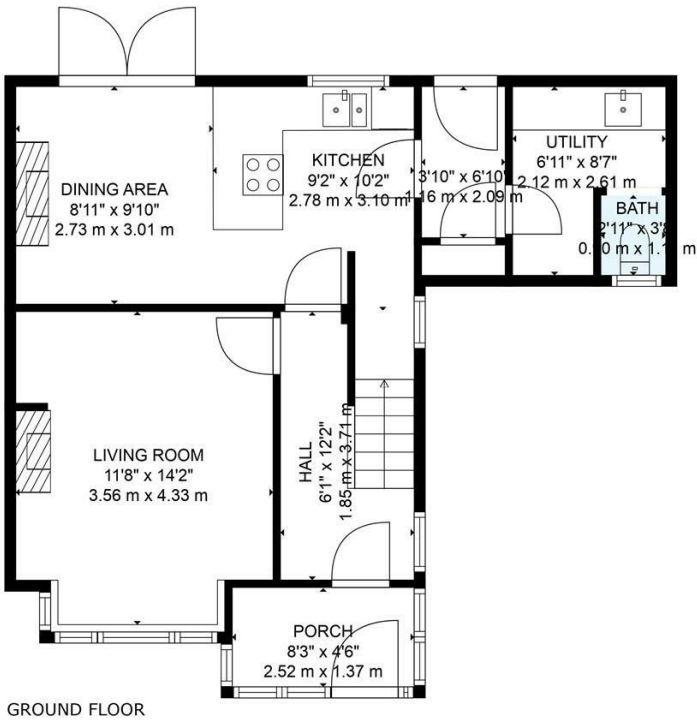
# 3 Bedroom House - Semi-Detached located in Knutsford

Positioned on a quiet street, this home enjoys a prime spot within a well established region of Knutsford and boasts excellent access to local amenities such as local hairdressers, beauticians & a convenience store. As well as being within close proximity to transport links such as Knutsford train station (0.6miles away) and the m56 motorway.

The internal accommodation comprises:

Ground floor:

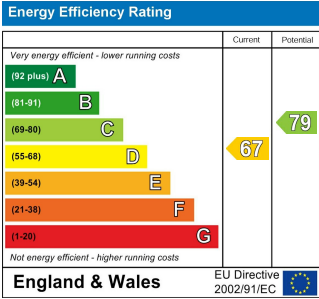
You approach the front of the home across the newly surfaced gravel driveway, with parking for multiple cars, leading into the spacious front porch. The ground floor opens up with a bright and welcoming entrance hallway leading into an immaculate living room featuring marble fireplace and bay window. The standout feature of the home is the open-plan kitchen, living, and dining space to the rear. This



TOTAL: 930 sq. ft, 87 m2  
 GROUND FLOOR: 525 sq. ft, 49 m2, FIRST FLOOR: 405 sq. ft, 38 m2  
 EXCLUDED AREAS: PORCH: 37 sq. ft, 3 m2  
 WALLS: 98 sq. ft, 8 m2  
 SIZES AND DIMENSIONS ARE APPROXIMATE, ACTUAL MAY VARY.

Call us on  
 01565 396 356  
 Info@acobas.co.uk  
 www.acobas.co.uk

Council Tax Band  
 C



Agents Note: Whilst every care has been taken to prepare these particulars, they are for guidance purposes only. All measurements are approximate and are for general guidance purposes only and whilst every care has been taken to ensure their accuracy, they should not be relied upon and potential buyers are advised to recheck the measurements.

