

LEASEHOLD



Apartment

201 | EVERY STREET,
MANCHESTER, M4
7LT

£275,000

FEATURES



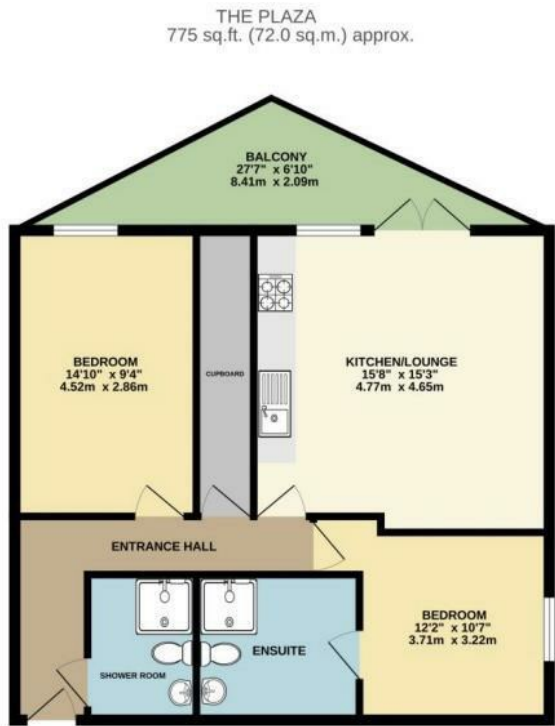
ACOBAS

2 Bedroom Apartment located in Manchester

Acobas are pleased to offer to the market this stunning two bedroom apartment with impressive '20 person terrace' and two underground parking spaces at The Plaza, in a prominent Manchester centre location. Flat 201 is conveniently situated only 0.6miles from Piccadilly Train Station as well as 0.8miles from Northern Quarter/Ancoats.

This property boasts two spacious bedrooms: The first being the primary bedroom, containing a sleek three piece suite, whilst the other double bedroom possesses a superb en suite bathroom. Additionally, find a spacious open plan kitchen diner which flows out onto the private terrace - perfect for hosting guests. Also, an abundance of glass provides a light filled home during the summer season.

Available as either as an investment, or alternatively - owner occupier. There is no onward chain and is a prime opportunity to acquire a conveniently located apartment for city centre living.

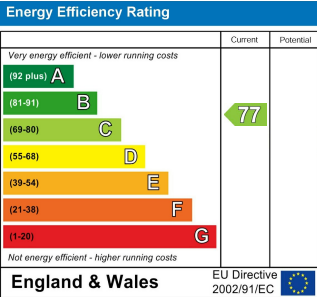


TOTAL FLOOR AREA : 775 sq.ft. (72.0 sq.m.) approx.
Whilst every effort has been made to ensure the accuracy of the floorplan, the seller does not accept any liability for any errors or omissions. The floorplan is for guidance only and should not be relied upon for any prospective purchase. The seller, agent and any other person shown have not been tested and no guarantee is given as to their accuracy or efficiency. Use for guide only.
Made with Metaplan 12/2023

Call us on
01565 396 356

Info@acobas.co.uk
www.acobas.co.uk

Council Tax Band
C



Agents Note: Whilst every care has been taken to prepare these particulars, they are for guidance purposes only. All measurements are approximate and are for general guidance purposes only and whilst every care has been taken to ensure their accuracy, they should not be relied upon and potential buyers are advised to recheck the measurements.

