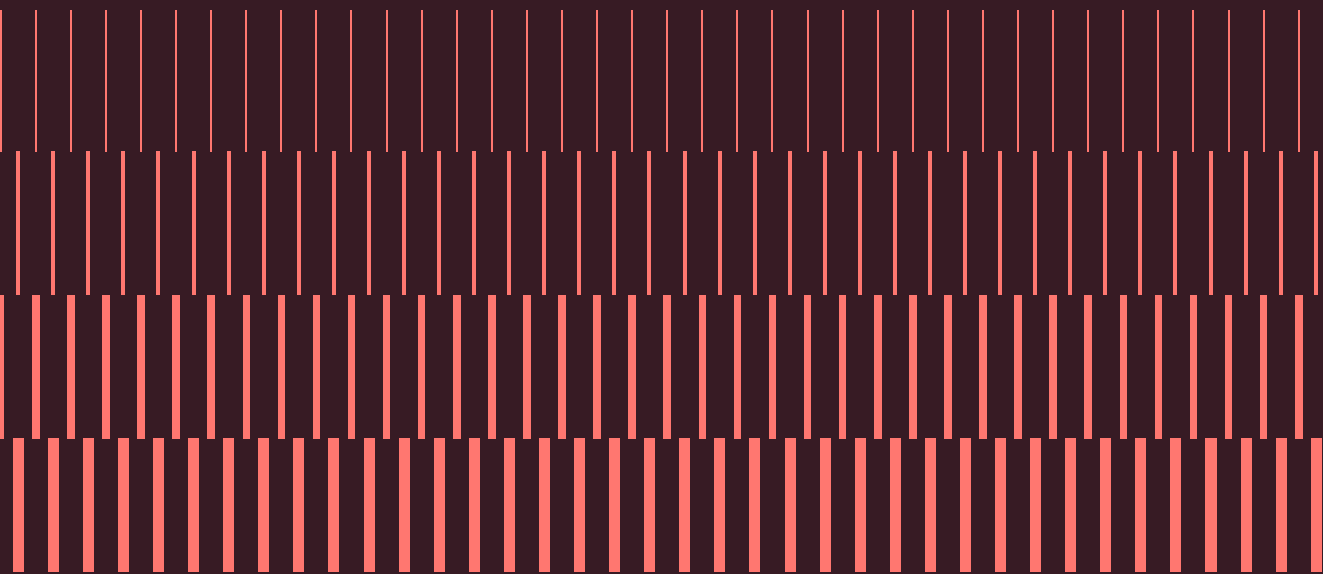


MILLINERSYARD.CO.UK

WELCOME TO

MILLINERS
YARD LIVERPOOL





The Fabric Of Modern Living

Welcome to a new chapter in the timeless tale of Liverpool's Fabric District.

A narrative now adorned with contemporary urban living. Presenting our new collection of Studio, 1 + 2 bedroom apartments to rent, thoughtfully designed and tailored for city living.



COMPUTER GENERATED IMAGES AND PHOTOGRAPHY ARE INTENDED FOR ILLUSTRATIVE PURPOSES ONLY AND SHOULD BE TREATED AS GENERAL GUIDANCE ONLY.

x x

Milliners Yard provides a beautiful aesthetic, taking city centre living to a new dimension. Ascend to new heights of living across our nine floors of meticulously designed apartments and communal amenity space, creating a seamless blend of comfort, simplicity, and style in your new home.

Enjoy exclusive access to the rooftop garden. This outdoor oasis not only offers a tranquil space for fresh air, but also unveils panoramic views of the vibrant and sought-after neighbourhood in Liverpool's Fabric District.

Stroll through the central communal landscaped courtyard with your four-legged friend or indulge in an invigorating workout in our fully equipped gym. Our dedicated residents' lounge also provides versatile spaces for relaxation and work, tailored to your flexible needs.



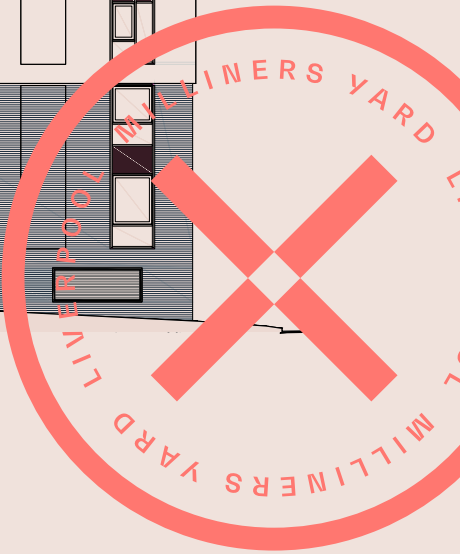
For cycling enthusiasts, secure bike storage ensures safety. Additionally, our underground car parking, complete with electric and disabled spaces, provides security and peace of mind for all residents. Elevating everyday living, Milliners Yard offers a concierge service where our expertly trained team is dedicated to ensuring a harmonious experience for residents.

Embrace the opportunity to craft a bespoke lifestyle perfectly tailored to you.
This is rented living as you've never known it before.

XX

Building Overview

📍 Stafford St Elevation





@MILLINERSYARD_LIVERPOOL



COMPUTER GENERATED IMAGES AND PHOTOGRAPHY ARE INTENDED FOR ILLUSTRATIVE PURPOSES ONLY AND SHOULD BE TREATED AS GENERAL GUIDANCE ONLY.

A Place To Call Home

Relax in your stylish and spacious apartment where panoramic city views await through expansive windows. Situated in the heart of the Fabric District Milliners Yard apartments are meticulously crafted with tranquillity in mind ensuring a serene atmosphere.

Each apartment is finished to perfection featuring a sleek and modern design. Contemporary flooring flows seamlessly throughout the open-plan lounge kitchen and corridors complemented by pristine white walls ready for your personal flair. Indulge in the convenience of independently controlled heating and hot water while fully integrated Beko appliances await your culinary adventures in the kitchen.



Beko Integrated Appliances



**Furnished
& Unfurnished
available**



Intercom System



Double & King Sized Beds

(Each apartment
may vary)



En-Suite &/or Main Bathroom



Studio

362.2 SQ FT • 33.65 M²
TYPE 25

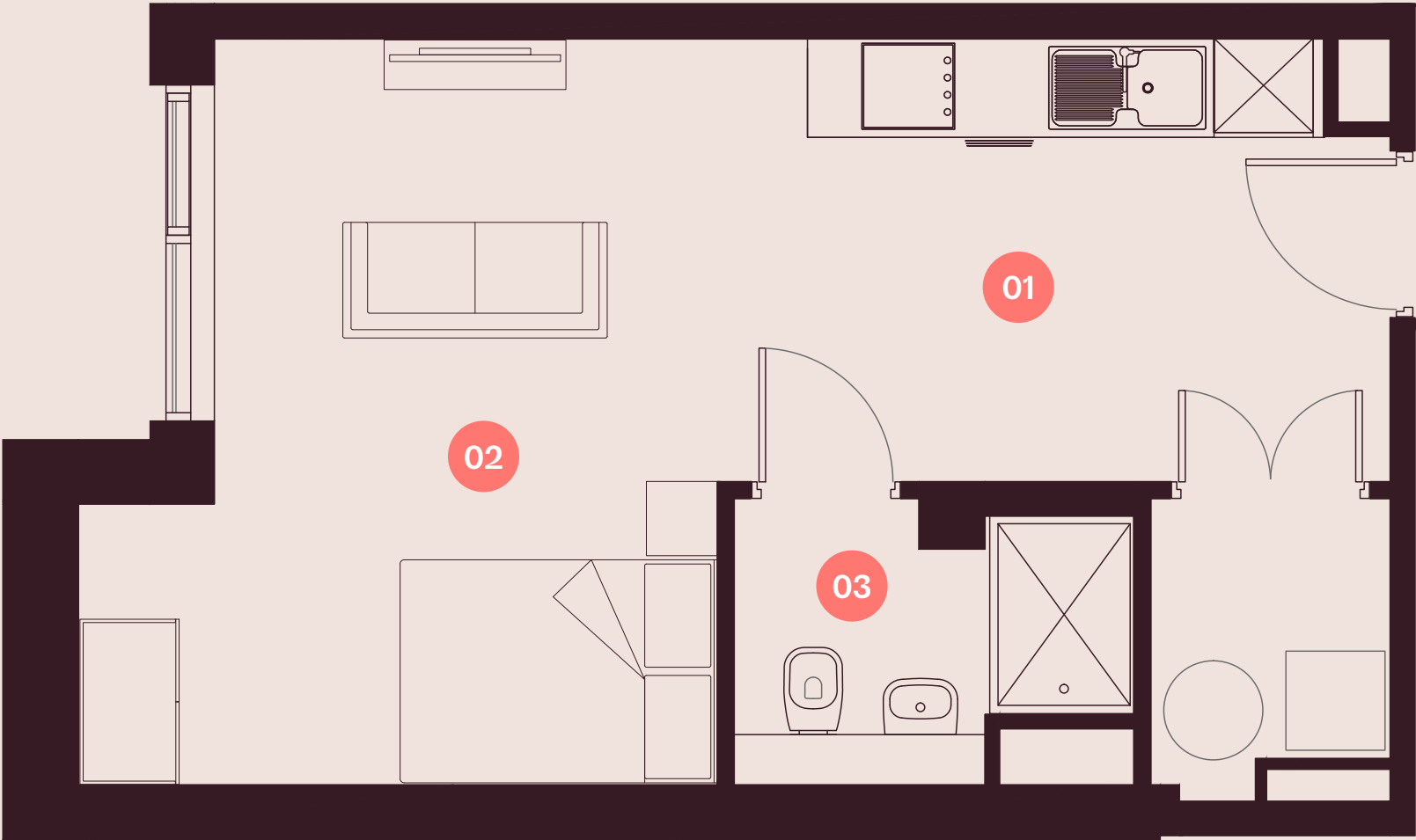
Every apartment at Milliners Yard is meticulously designed with a focus on your daily life.

This perfectly proportioned self-contained studio has been created to give you a home without compromise, offering a bright and airy space for you to call home. Ideal for individuals, the apartment comes fully furnished, featuring a comfortable double or king size bed, a cosy living area, a beautifully designed bathroom, and a Hacienda kitchenette equipped with integrated Beko appliances, including fridge/freezer, dishwasher and washing machine/dryer.

01	Living / Kitchen	7.11m x 2.68m 23'3" x 8'9"
02	Bedroom	4.52m x 3.87m 14'9" x 12'8"
03	Bathroom	2.42m x 1.73m 7'11" x 5'8"



VIEW ALL STUDIO
APARTMENT LAYOUTS



DISCLAIMER

Customers should note these illustrations are an example of this apartment type. All dimensions indicated are approximate and the furniture layout is for illustrative purposes only. Homes may be 'handed' (mirror image) versions of the illustrations. Detailed plans and specifications are available for inspection for each unit type and customers must check their individual specifications prior to making a reservation.

1 Bedroom

465.1 SQ FT • 43.21 M²
TYPE 02

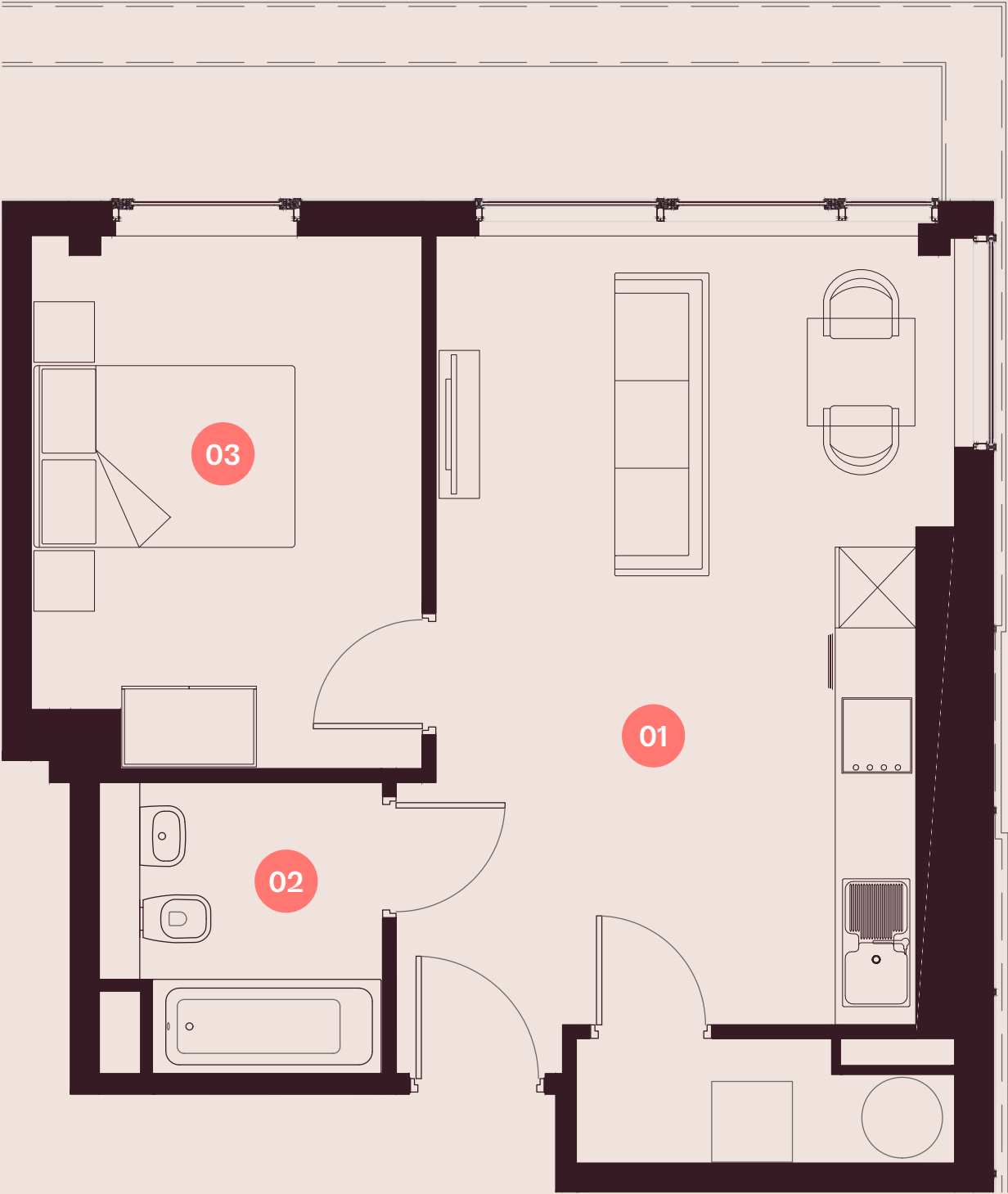
Every apartment at Milliners Yard is meticulously designed with a focus on your daily life.

This one-bedroom apartment effortlessly checks all the boxes, offering perfectly proportioned, bright, and airy spaces. The apartment comes fully furnished, featuring a comfortable double or king size bed, a cosy living area, a beautifully designed bathroom, and a Hacienda kitchen equipped with integrated Beko appliances, including fridge/freezer, dishwasher and washing machine/dryer.

01	Living / Kitchen	3.85m x 5.86m 12'7" x 19'2"
02	Bathroom	2.10m x 2.16m 6'10" x 7'1"
03	Bedroom 1	2.90m x 3.96m 9'6" x 12'11"



VIEW ALL 1 BEDROOM
APARTMENT LAYOUTS



DISCLAIMER

Customers should note these illustrations are an example of this apartment type. All dimensions indicated are approximate and the furniture layout is for illustrative purposes only. Homes may be 'handed' (mirror image) versions of the illustrations. Detailed plans and specifications are available for inspection for each unit type and customers must check their individual specifications prior to making a reservation.

2 Bedroom

717.8 SQ FT • 66.69 M²
TYPE 08

Every apartment at Milliners Yard is meticulously designed with a focus on your daily life.

Introducing our thoughtfully crafted two-bedroom apartment, designed for housemates sharing, small families, or couples seeking that additional space. The open-plan kitchen, living, and dining space provides a perfect setting for gathering, equipped with integrated Beko appliances, including fridge/freezer, dishwasher and washing machine/dryer.

01	Living / Dining	4.59m x 3.65m 15'0" x 11'11"
02	Kitchen	3.88m x 2.40m 12'8" x 7'10"
03	Bathroom	3.00m x 2.92m 9'10" x 9'6"
04	En-suite	2.40m x 2.05m 7'10" x 6'8"
05	Bedroom 1	4.59m x 2.59m 15'0" x 8'5"
06	Bedroom 2	3.98m x 3.00m 13'0" x 9'10"



VIEW ALL 2 BEDROOM
APARTMENT LAYOUTS



DISCLAIMER

Customers should note these illustrations are an example of this apartment type. All dimensions indicated are approximate and the furniture layout is for illustrative purposes only. Homes may be 'handed' (mirror image) versions of the illustrations. Detailed plans and specifications are available for inspection for each unit type and customers must check their individual specifications prior to making a reservation.





COMPUTER GENERATED IMAGES AND PHOTOGRAPHY ARE INTENDED FOR ILLUSTRATIVE PURPOSES ONLY AND SHOULD BE TREATED AS GENERAL GUIDANCE ONLY.



The Fabric District

Welcome to the vibrant Fabric District, a dynamic neighbourhood pulsating with creativity and culture in the heart of Liverpool.

Nestled amidst historic textile warehouses and contemporary art spaces, this eclectic enclave offers an unparalleled urban living experience. Discover a diverse community of artists, designers, and entrepreneurs who call the Fabric District home, fostering a lively atmosphere brimming with innovation and collaboration.



▲ BOLD STREET COFFEE

Step outside your doorstep and immerse yourself in the rich tapestry of sights, sounds, and flavours that define the Fabric District. Wander through streets adorned with colourful murals and vibrant street art, reflecting the area's artistic spirit and cultural diversity. Indulge your senses in a culinary adventure, sampling global cuisines from quaint cafes and trendy eateries.



▲ SKETCH BAR LIVERPOOL



From boutique shops to bustling markets, there's always something new to explore in this thriving neighbourhood. Embrace the vibrant energy and unique charm of the Fabric District as you make yourself at home in our modern and stylish apartments.



▲ ALBERT DOCK



▲ BEATLES STATUE



▲ LIVERPOOL LIME STREET STATION

Life in Liverpool

Welcome to Liverpool’s vibrant city centre, where history, culture, and modernity blend seamlessly. Explore iconic landmarks like the Albert Dock and St. George’s Hall, showcasing the city’s maritime heritage and architectural grandeur.

Dive into Liverpool’s thriving cultural scene with theatres, music venues, and art galleries offering captivating performances and exhibitions. Shop at Liverpool ONE or discover independent boutiques in the city’s bohemian quarters.



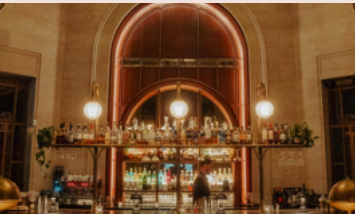
▲ LIVERPOOL ONE

At night, experience the city’s lively dining and nightlife scene with restaurants, bars, and clubs catering to every taste. Liverpool city centre promises an unforgettable urban experience.



▲ MARITIME MUSEUM

Wining & Dining



Hawksmoor

20 MINUTE WALK
8 BRUNSWICK ST, LIVERPOOL, L2 0PL



Riva Blu

19 MINUTE WALK
1 CASTLE ST, LIVERPOOL, L2 4SW



San Carlo

18 MINUTE WALK
41 CASTLE ST, LIVERPOOL, L2 9SH



Gaucho

20 MINUTE WALK
7 WATER ST, LIVERPOOL, L2 0RD



Marco Pierre White Steakhouse

21 MINUTE WALK
10 CHAPEL ST, LIVERPOOL, L3 9AG



Mowgli

21 MINUTE WALK
3 WATER STREET, LIVERPOOL, L2 0RD



Bundobust

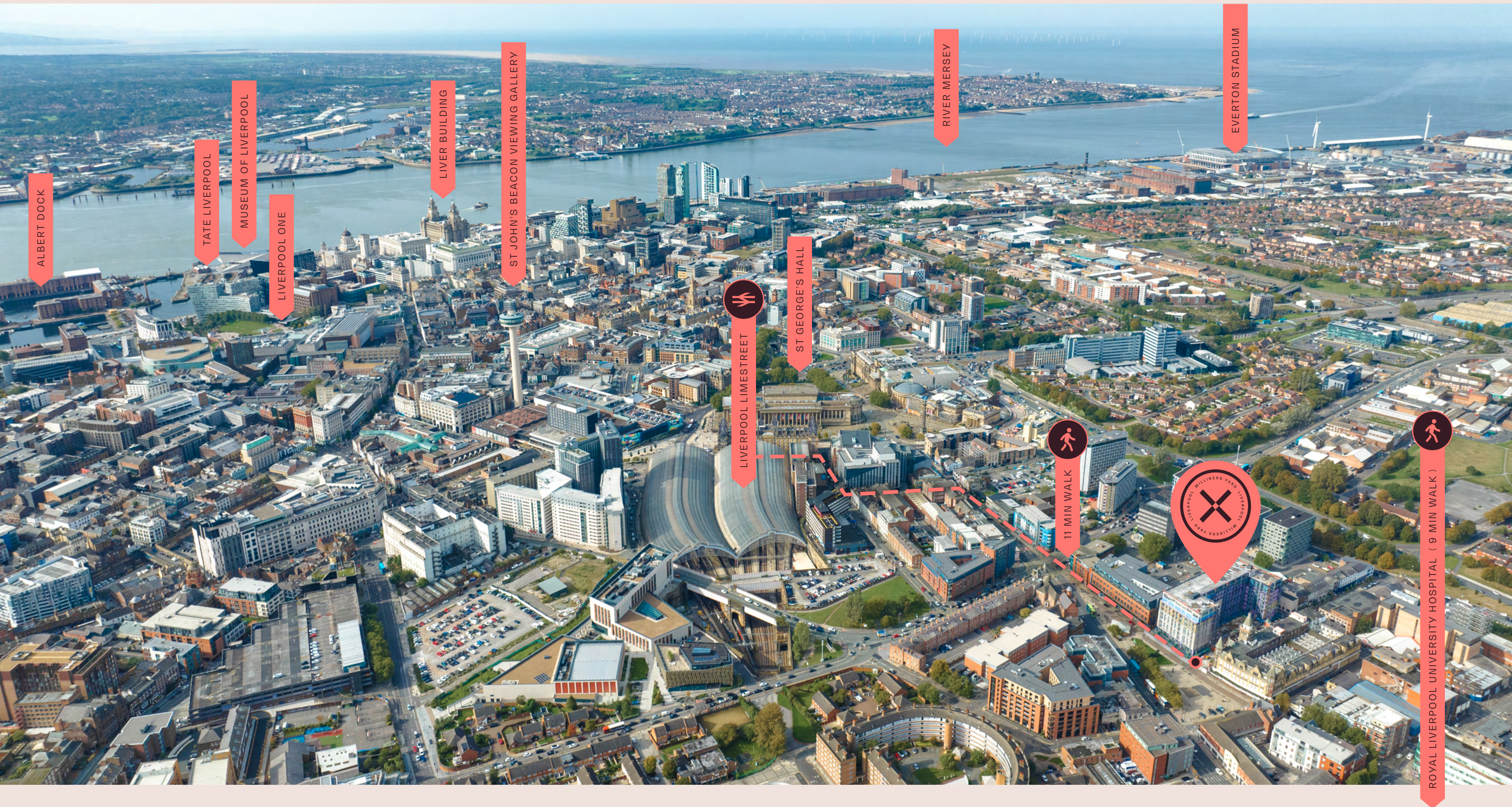
16 MINUTE WALK
FIRST FLOOR, 17-19, BOLD ST, LIVERPOOL, L1 4DN



Salt House

18 MINUTE WALK
CHURCH HOUSE, 1 HANOVER ST, LIVERPOOL, L1 3DW





LIVERPOOL LIME STREET


MILLINERS YARD, L3 8JA

1 HR 03 MINS



Ready To Move In?

MILLINERSYARD.CO.UK



ANOTHER COMMUNITY BY

allsop

home
group

UK LAND & PROPERTY

COMPUTER GENERATED IMAGES AND PHOTOGRAPHY ARE INTENDED FOR ILLUSTRATIVE PURPOSES ONLY AND SHOULD BE TREATED AS GENERAL GUIDANCE ONLY

