



Luxury living within
a Grade II Listed
Landmark

A Collection of 1, 2 & 3 Bedroom Luxury Apartments by Eve Homes

From **£125,000** | **Share of Freehold** | **999-Year Leases** | **£0 Ground Rent**



WELCOME TO A PIECE OF KINGTON'S HISTORY

Set within the beautifully restored **Old Town Hall** - originally built in 1845 by renowned timber surveyor and builder **Benjamin Wishlade** - this iconic Grade II listed building now offers a rare opportunity to own a refined, modern home enriched with character and heritage.

Nestled in the heart of Kington, a charming market town surrounded by rolling hills and steeped in tradition, Wishlades at Lower Cross is a unique development of luxurious apartments brought to life by Eve Homes - blending exquisite craftsmanship with thoughtful design.

...a refined, modern home enriched with character “

Old Town Hall building, Lower Cross Built in 1845 by **Benjamin Wishlade**, a timber surveyor and builder who lived in Duke Street. Kington, at that time, was governed by 24 Improvement Commissioners, of whom Benjamin Wishlade was one. The building proved unsuitable as a Town Hall and was abandoned as a public building.

In 1977 it was restored and rebuilt as shops and housing. Kington, a charming market town in Herefordshire, is generally considered a nice place to live,

particularly for those seeking a peaceful rural lifestyle with a strong sense of community. It's known for its beautiful natural surroundings, historical architecture, and friendly atmosphere. Nestled in the Arrow Valley in the shadows of the imposing Hergest Ridge and Bradnor Hill, it lies within the historic area of Archenfield, near the Welsh border, north-west of the city of Hereford.

The parish church is dedicated to St. Michael and All Angels. Kington is 2.0 miles (3.2 km) from

the border with Wales, and lies on the western side of Offa's Dyke. The town is in the shadow of Hergest Ridge, and on the River Arrow, where it is crossed by the A44 road.

Kington is famous for its 18-hole golf course, which is said to be the highest in England and Wales at 390m above sea level. Local attractions also include the Small Breeds Farm, Hergest Croft Gardens and The Judges Lodgings in Presteigne. Kington Show is the highlight of the year.

Wishlades



CONTEMPORARY LIVING, TIMELESS SETTING

Inside each apartment, discover a fusion of classic architecture and contemporary style. Spacious, light-filled interiors are thoughtfully finished with:

- British-built kitchens
- Integrated appliances
- Luvanto luxury flooring
- Elegant Kaldewei baths in select apartments
- Energy-efficient Worcester combi boilers
- Sash Windows and secondary glazing
- Luxurious communal areas





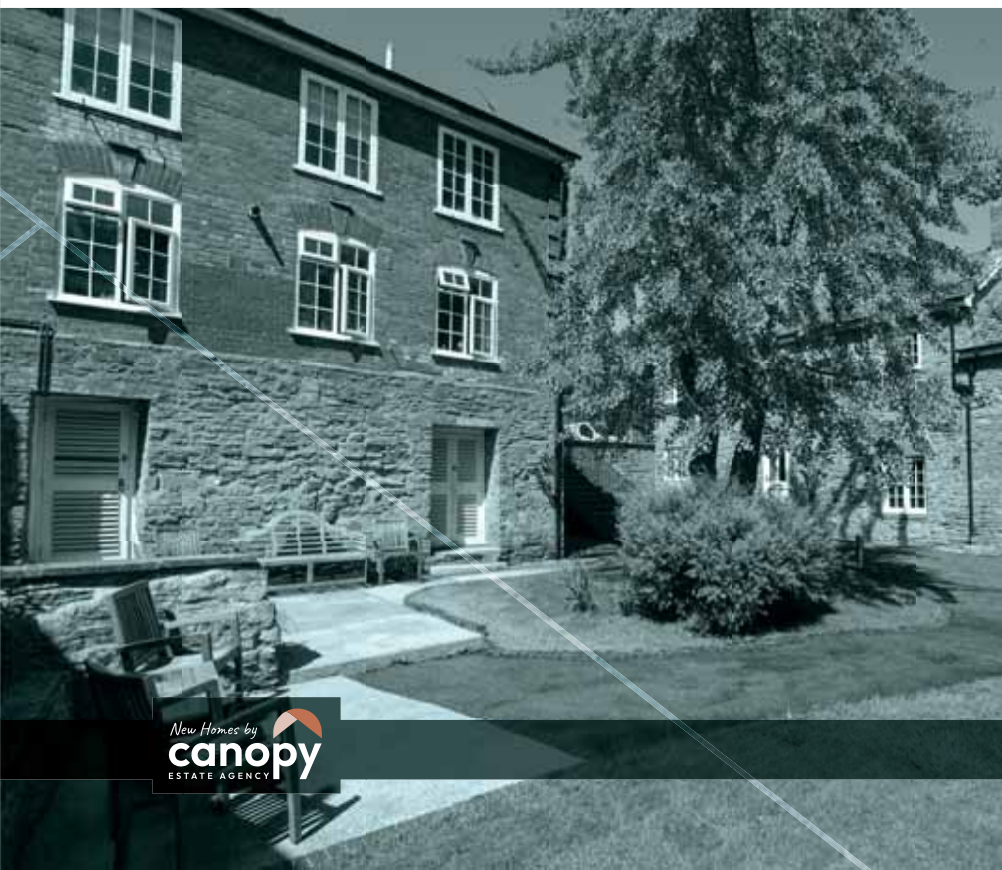
Landscaped communal
gardens for tranquil
outdoor living... ”

FEATURES AT A GLANCE

- **Share of Freehold** with **999 Year Leases**
- **Zero Ground Rent** – Future-proofed and cost-efficient
- **Parking Available** – enquire for more details
- **Eco-conscious design:** Low energy lighting, secondary glazing, efficient heating
- **Landscaped communal gardens** for tranquil outdoor living



Future-proofed
& cost effective “



LOWER CROSS

Wishlades



KINGTON – THE BEST OF TOWN & COUNTRY

Surrounded by the stunning **Hergest Ridge** and **Bradnor Hill**, Kington offers a peaceful countryside lifestyle without sacrificing connectivity. Located just 2 miles from the Welsh border, it sits alongside **Offa's Dyke** and the **River Arrow**, with direct access via the A44.

Residents will enjoy proximity to:

- **England's highest golf course**
- **Hergest Croft Gardens**
- **Small Breeds Farm Park**
- **The Judges Lodgings** in nearby Presteigne
- **Kington Show** – the local highlight of the year

Whether you're looking for your first home, downsizing, investing, or starting a new chapter, Wishlades at Lower Cross is a rare opportunity to **own a slice of history** with all the comforts of modern contemporary living.

own a slice
of history... ”



DISTANCE BY CAR

Hereford	20 miles (35 minutes)
Worcester	41 miles (1 hour 15 minutes)
Gloucester	51 miles (1 hour 25 minutes)
Birmingham	72 miles (1 hour 45 minutes)
Cardiff	75 miles (1 hour 50 minutes)
London	162 miles (3 hours 45 minutes)

TRAVEL BY TRAIN

Hereford to London

Direct	3 hours 6 minutes
Change in Newport	2 hours 35 minutes

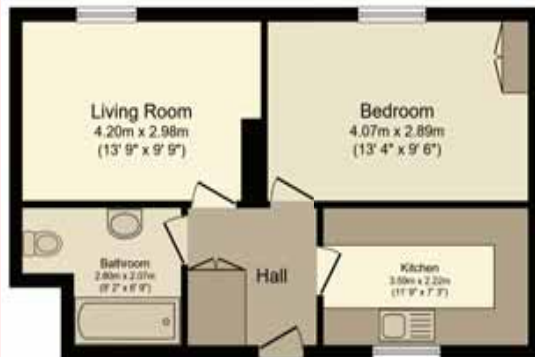


Kington offers a peaceful
countryside lifestyle without
sacrificing connectivity “

FLOORPLANS

Apartment 2 | Ground Floor Maisonette

1 bedroom apartment, separate lounge and kitchen with oven hob, hood, fridge/freezer, dishwasher and washer/dryer, shower over bath



Total floor area: 45.3 sq.m. (487 sq.ft.)

Apartment 4 | Ground Floor Maisonette

1 bedroom apartment, separate kitchen/lounge, oven hob, hood, fridge/freezer, dishwasher and washer/dryer, shower over bath



Total floor area: 41.7 sq.m. (449 sq.ft.)

Apartment 8

First Floor

1 bedroom apartment, electric heating, open plan kitchen/lounge, oven hob, hood, fridge/freezer, dishwasher and washer/dryer, shower cubicle



Total floor area:
41.7 sq.m. (449 sq.ft.)

Apartment 9

First Floor

1 bedroom apartment, separate kitchen/lounge, oven hob, hood, fridge/freezer, dishwasher and washer/dryer, shower over bath



Total floor area:
55.2 sq.m. (594 sq.ft.)

One Bedroom
Apartments

New Homes by
canopy
ESTATE AGENCY

Apartment 10

Second Floor

1 bedroom apartment, separate kitchen/ lounge, oven hob, hood, fridge/freezer, dishwasher and washer/dryer, shower over bath

Total floor area:
55.2 sq.m. (594 sq.ft.)



Apartment 12

Second Floor

1 bedroom apartment, open plan kitchen/ lounge, oven hob, hood, fridge/freezer, dishwasher and washer/dryer, bathroom with shower cubicle

Total floor area:
38.8 sq.m. (418 sq.ft.)



New Homes by
canopy
ESTATE AGENCY

One Bedroom
Apartments

Apartment 11 | Second Floor

1 bedroom apartment, separate kitchen/lounge, oven hob, hood, fridge/freezer, dishwasher and washer/dryer, shower over bath



Total floor area: 59.4 sq.m. (639 sq.ft.)

Apartment 13 | Top Floor Penthouse

1 bedroom apartment, open plan kitchen/diner, oven hob, hood, fridge/freezer, dishwasher and washer/dryer, living room, bathroom with shower cubicle



Total floor area: 59.2 sq.m. (368 sq.ft.)

Apartment 3 | First Floor Maisonette

2 bedroom apartment, open plan kitchen / lounge, oven hob, hood, fridge/freezer, dishwasher and washer/dryer, shower over bath



Total floor area: 59.7 sq.m. (643 sq.ft.)

Apartment 5 | First Floor

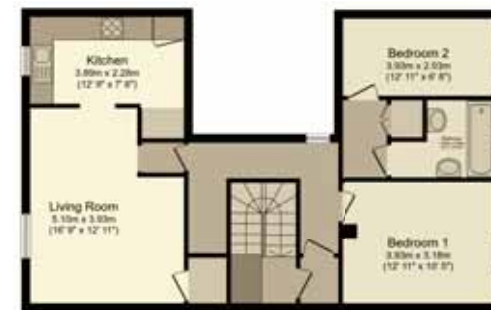
2 bedroom apartment, open plan kitchen/ lounge, oven hob, hood, fridge/freezer, dishwasher and washer/dryer, shower over bath



Total floor area: 69.9 sq.m. (753 sq.ft.)

Apartment 6 | Second Floor

2 bedroom apartment, open plan kitchen/ lounge, oven hob, hood, fridge/freezer, dishwasher and washer/dryer, shower over bath, added benefit of a wine fridge



Total floor area: 77.0 sq.m. (829 sq.ft.)

Two & Three Bedroom Apartments

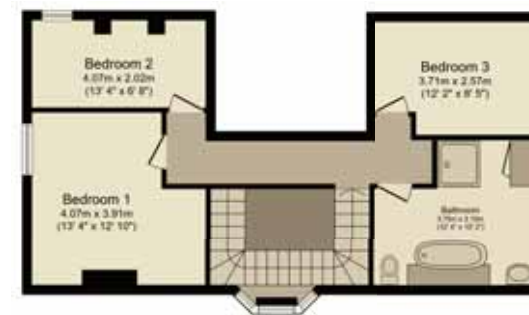
New Homes by
canopy
ESTATE AGENCY

Apartment 7 | Ground and First Floor Duplex

3 bedroom duplex apartment, separate kitchen, oven hob, hood, fridge/freezer, dishwasher and washer/ dryer with hot water tap and wine fridge, seating bench as extra, separate large lounge, separate wc, office, bathroom with bath and walk in



GROUND FLOOR
58.8 sq.m. (633 sq.ft.)



FIRST FLOOR
60.7 sq.m. (653 sq.ft.)

Total floor area: 119.5 sq.m. (1286 sq.ft.)

This floor plan is for illustrative purposes only. It is not drawn to scale. Any measurements, floor areas (including any total floor area), openings and orientations are approximate. No details are guaranteed, they cannot be relied upon for any purpose and do not form any part of any agreement. No liability is taken for any error, omission or misstatement. A party must rely upon its own inspections.

FLOORPLANS

Cottage 1

3 bedroom cottage, oven hob, hood, fridge/freezer, dishwasher and washer/dryer, shower over bath



Total floor area: 79.5 sq.m. (856 sq.ft.)

Three Bedroom Cottage

EVE HOMES

Eve Homes is a family owned business based in Herefordshire. With over 20 years of property development and surveying beautiful buildings in London, along with winning Surveyor of the Year at the British Mortgage Awards, the husband and wife team are bringing luxurious living to Herefordshire. Joe is the surveyor and project manager, and his wife Jo is the interior designer with a keen eye for detail. The couple bring together their combined skills and expertise, creating aspirational living at affordable prices.

Wishlades is a development close to their heart, as it's located in their home town of Kington. When the building became available, they knew they had to restore it to its former glory.

This development is one of a kind, bringing a little bit of luxury into a rural market town. Joe & Jo said:



“ We simply love the architecture of the building, hence naming it Wishlades after the original Architect. We know there are people who are similar to us, who are craving something a little bit special, and a well appointed home in which to make lasting memories. ”



LOWER CROSS
KINGTON
HR5 3BG

New Homes by
canopy
ESTATE AGENCY

01905 701261
hello@canopyea.co.uk