

Heather Road, Small Heath



£260,000

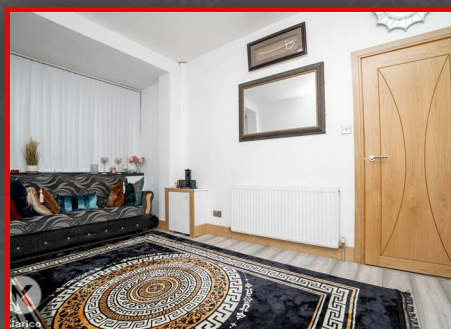
Nestled on the charming Heather Road in Birmingham, this delightful mid-terrace house offers a perfect blend of character and modern living. Built in the 1920s, the property boasts a generous 1,182 square feet of well-designed space, making it an ideal family home.

As you step inside, you are greeted by two spacious reception rooms that provide ample room for relaxation and entertaining. The natural light floods through the windows, creating a warm and inviting atmosphere throughout the home. The amazing kitchen is a standout feature, designed to cater to all your culinary needs while also serving as a social hub for family and friends.

The property comprises three comfortable bedrooms, each offering a peaceful retreat at the end of the day. The layout is thoughtfully designed, with a separate WC located upstairs for added convenience. This feature is particularly beneficial for families or guests, ensuring privacy and ease of use.

The well-lit interiors and spacious rooms make this home feel open and airy, perfect for those who appreciate a bright living environment. The location on Heather Road is also a significant advantage, providing easy access to local amenities, schools, and transport links.

In summary, this mid-terrace house on Heather Road is a wonderful opportunity for anyone seeking a charming and spacious home in Birmingham. With its character, modern kitchen, and well-proportioned rooms, it is sure to appeal to families and professionals alike. Do not miss the chance to make this lovely property your own.



Heather Road, Small Heath

- Mid-Terrace
- 3 Bedrooms
- Garden
- Double Glazing
- 2 Reception Rooms
- Impressive Kitchen/Diner
- Out Building
- Ideal Family Home

Reception Room

11'4" x 8'8" (3.46m x 2.64m)

Double glazed bay window to front, laminate flooring, wall mounted radiator, ceiling lights, skirting

Living Room

12'2" x 11'10" (3.70m x 3.60m)

Double glazed window to rear, laminate flooring, ceiling light, skirting, wall mounted radiator

Kitchen/Dining Room

22'6" x 6'7" (6.85m x 2.00m)

Double glazed windows to side, tile flooring, tiled walls, ceiling lights, generous number of storage units, worktops, drainer sink with mixer tap, integrated gas cooker and extractor fan, integrated dish washer, wall mounted radiator

Utility

3'7" x 3'5" (1.09m x 1.04m)

Storage units, worktop, tile flooring, Plumbing for white goods

Bathroom

10'8" x 8'1" (3.24m x 2.46m)

Privacy double glazed window to side, tile flooring, wall tiles, bathtub and jacuzzi with mixer tap, shower unit, wash basin with mixer tap, toilet, heated towel rail, extractor fan

Bedroom 1

10'8" x 13'5" (3.24m x 4.10m)

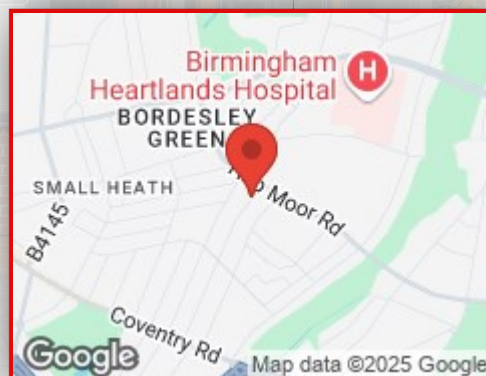
Double glazed window to front, laminate flooring, wall mounted radiator, skirting, ceiling light, Built up wardrobes

Bedroom 2

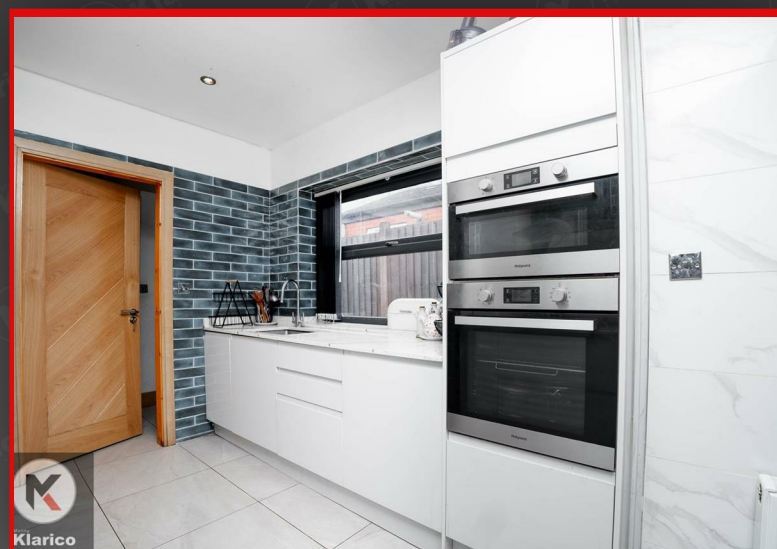
12'5" x 10'7" (3.79m x 3.22m)

Double glazed window to rear, laminate flooring, wall mounted radiator, skirting, ceiling light

Directions



Heather Road, Small Heath



Bedroom 3

9'1" x 7'5" (2.76m x 2.26m)

Double glazed window to rear, laminate flooring, wall mounted radiator, skirting, ceiling light

WC

2'7" x 4'6" (0.80m x 1.37m)

Laminate flooring, wash basin with mixer taps, toilet, ceiling light, extractor fan

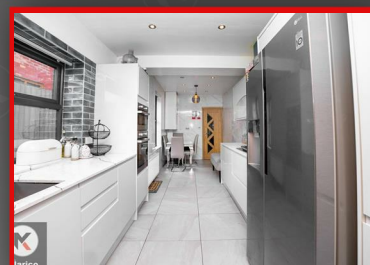
out Building

8'5" x 10'8" (2.57m x 3.24m)

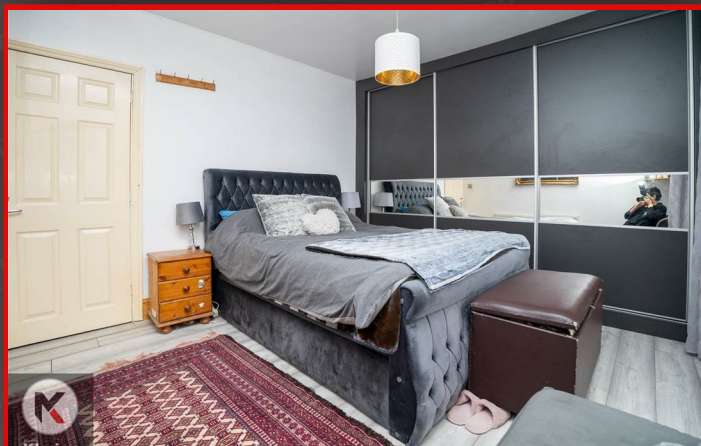
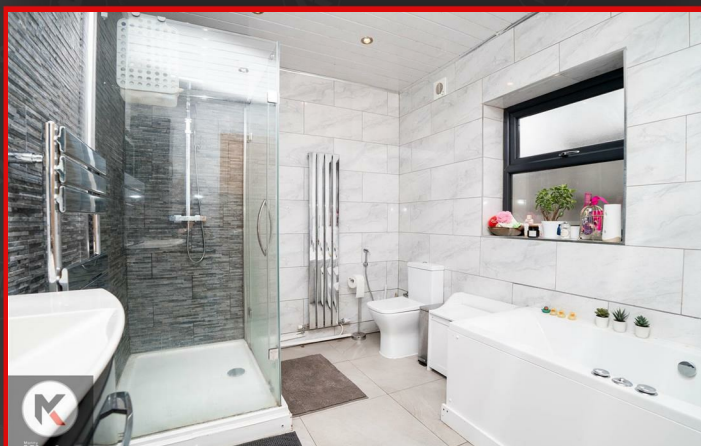
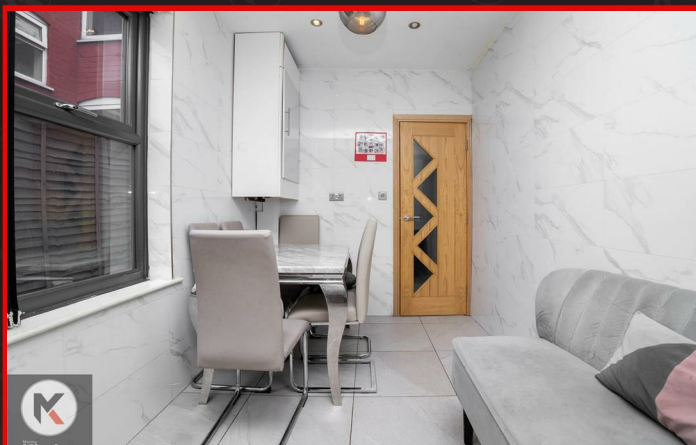
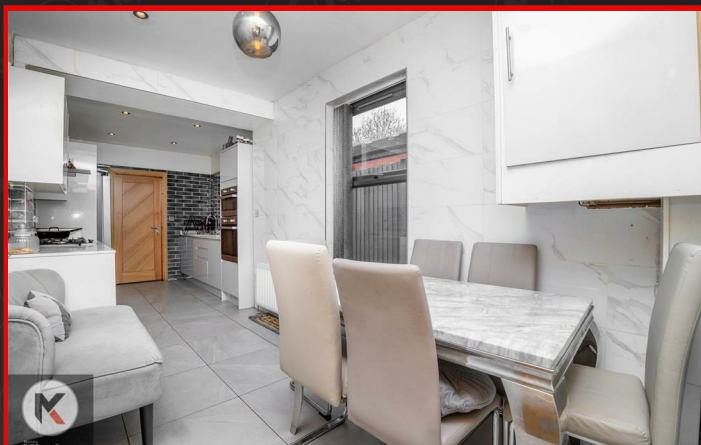
Double glazed window to front, laminate flooring, skirting, ceiling light

Garden

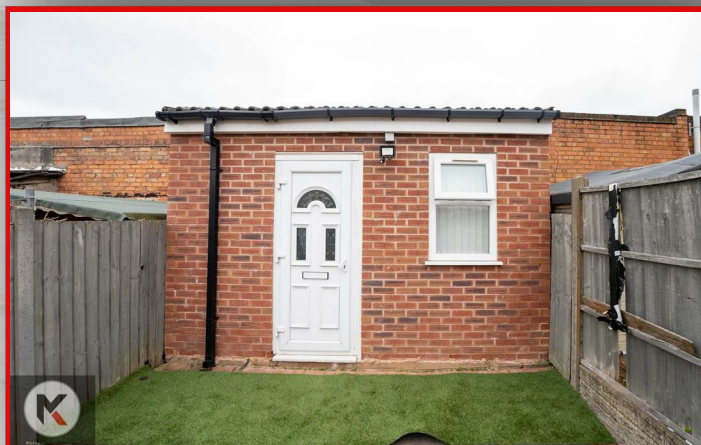
Low maintenance garden, privacy from rear, Fence panels to boundaries, out building



Heather Road, Small Heath



Heather Road, Small Heath



Heather Road, Small Heath



Total area: approx. 109.8 sq. metres (1181.8 sq. feet)



Manny
Klarico
ESTATE AGENTS

332 Hob Moats Road
Birmingham
B92 8JT

0121 750 0390
www.mannyklarico.co.uk

