

## Hernall Croft, Sheldon



Contact us for more information 0121 750 0390





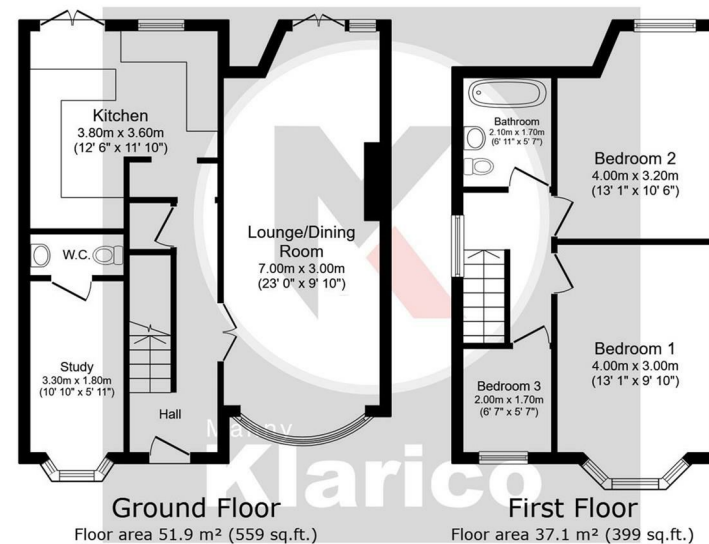
## Directions



Welcome to Hernall Croft, Sheldon - a charming location for this delightful semi-detached house. This property boasts two reception rooms, perfect for entertaining guests or simply relaxing with your loved ones. With three cosy bedrooms, there's ample space for the whole family to unwind and make this house a home.

The well-presented interior is sure to impress, offering a comfortable and inviting atmosphere throughout. The garage conversion adds versatility to the property, providing extra space that can be utilised as an additional living area, a home office, or a playroom for the little ones.

Situated in a family-friendly neighbourhood, this property is an ideal family home. The off-road parking for multiple vehicles ensures



TOTAL: 89.0 m<sup>2</sup> (958 sq.ft.)

This floor plan is for illustrative purposes only. It is not drawn to scale. Any measurements, floor areas (including any total floor area), openings and orientations are approximate. No details are guaranteed, they cannot be relied upon for any purpose and do not form any part of any agreement. No liability is taken for any error, omission or misstatement. A party must rely upon its own inspection(s).

**Lounge/Dining Room**  
7.00m x 3.00m (22'11" x 9'10")

**Study**  
3.30m x 1.80m (10'9" x 5'10")

**W.C**

**Kitchen**  
3.80m x 3.60m (12'5" x 11'9")

**Bedroom 1**  
4.00m x 3.00m (13'1" x 9'10")

**Bedroom 2**  
4.00m x 3.20m (13'1" x 10'5")

**Bedroom 3**  
2.00m x 1.70m (6'6" x 5'6")

**Bathroom**  
2.10m x 1.70m (6'10" x 5'6")

**Rear Garden**