

Coventry Road, Sheldon



Offers Over £146,000

Welcome to this charming one-bedroom apartment located on Coventry Road in the heart of Sheldon, Birmingham. This new build property offers a modern and stylish living space perfect for those seeking comfort and convenience.

As you step into this apartment, you are greeted by a spacious reception room that is ideal for relaxing or entertaining guests. The impressive kitchen and dining room provide a perfect setting for preparing delicious meals and enjoying them with loved ones.

The bedroom offers a cozy retreat, perfect for unwinding after a long day. The bathroom is sleek and contemporary, adding a touch of luxury to your daily routine.

With a total of 452 sq ft of living space, this apartment is thoughtfully designed to maximise comfort and functionality. Being a new build property constructed in 2020, you can expect modern amenities and energy-efficient features throughout.

Whether you are a first-time buyer, a young professional, or looking for a lucrative investment opportunity, this one-bedroom apartment offers a fantastic chance to own a piece of modern living in a vibrant location.

Don't miss out on this fantastic opportunity to make this stylish apartment your new home. Contact us today to arrange a viewing and experience the charm of Coventry Road for yourself.



Coventry Road, Sheldon

- Reception Room
- Impressive Kitchen/Diner
- Double Glazing
- Great Condition
- Bedroom
- Off-Road Parking
- Gas Central Heating
- Ideal Family Home

Lounge/Dining Room

12'1" x 13'9" (3.68m x 4.20m)

Double glazed bay windows to front, laminate flooring, wall mounted radiator, ceiling lights, skirting

Kitchen Area

6'7" x 7'8" (2.01m x 2.33m)

Laminate flooring, storage units, worktops, drainer sink with mixer tap, integrated gas cooker and extractor fan

Bedroom

12'1" x 10'3" (3.68m x 3.12m)

Double glazed windows to front, carpet flooring, wall mounted radiator, skirting, ceiling light

Utility

2'5" x 4'8" (0.74m x 1.42m)

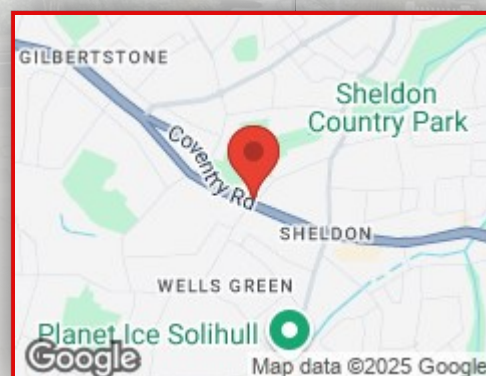
Laminate flooring, ceiling light

Bathroom

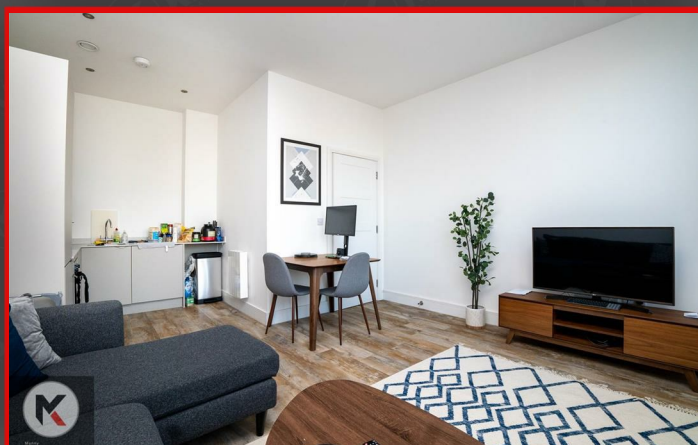
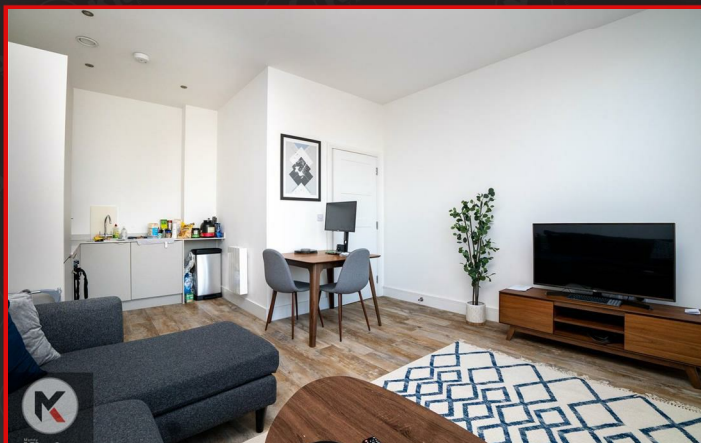
6'7" x 6'2" (2.01m x 1.89m)

Privacy double glazed window to side, tile flooring, lino flooring, wall tiles, bathtub with mixer tap, bathtub with separate taps, electrical shower unit, wash basin with mixer tap, pedestal wash with separate taps, heated towel rail, extractor fan.

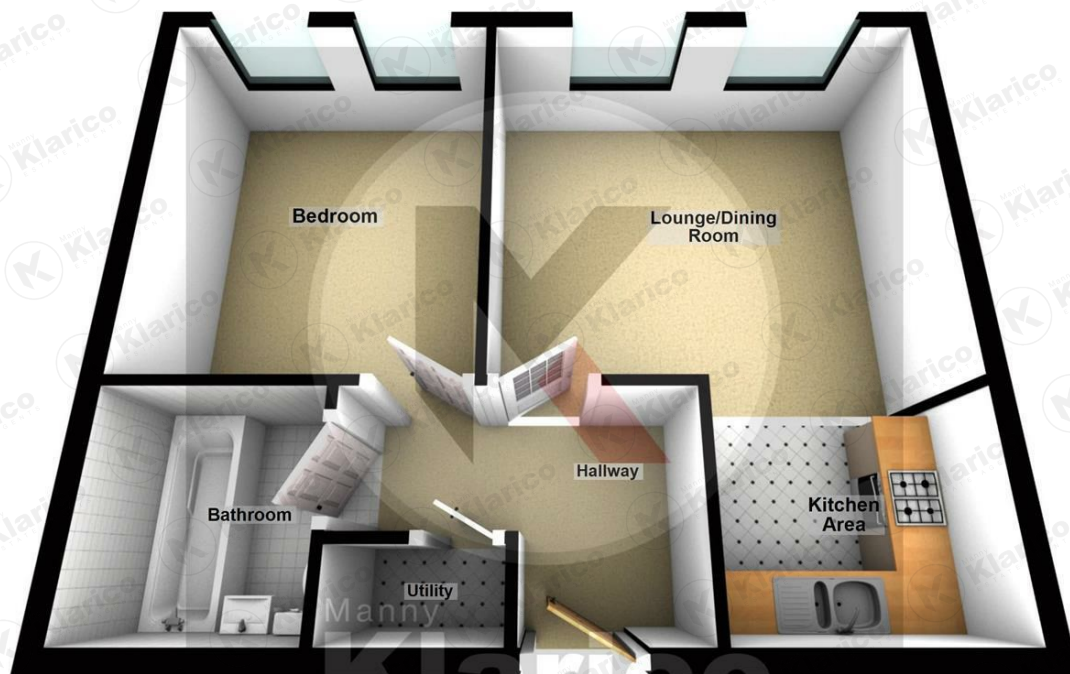
Directions



Coventry Road, Sheldon



Ground Floor



Total area: approx. 42.9 sq. metres (462.0 sq. feet)

This plan is not to scale and is given merely as a guide to show the approximate location of one room to another. This is only used for illustration purposes and should be as such by any other party thus no responsibility is taken for any error, omission or misstatement. Any appliances, fixtures, systems etc have not been tested and therefore no guarantee can be provided.



Manny
Klarico
ESTATE AGENTS

332 Hob Moats Road
Birmingham
B92 8JT

0121 750 0390

www.mannyklarico.co.uk

