

Westhall Court, Sheldon Heath



Offers Over £100,000

Welcome to Sheldon Heath Road, where this delightful flat is waiting to become your new home! Situated in a peaceful area, this property is perfect for those aged 55 and over who are looking for a safe and clean environment to reside in.

Upon entering, you'll be greeted by a spacious lounge and kitchen, perfect for entertaining guests or simply relaxing after a long day. The well-lit rooms create a warm and inviting atmosphere, making you feel right at home.

With two bedrooms and a bathroom, there is plenty of space for you to unwind and enjoy a comfortable lifestyle. The beautiful view from the property adds a touch of serenity to your everyday life, creating a peaceful oasis for you to enjoy.

Additionally, with private parking available for one vehicle, you can rest assured that your transportation needs are taken care of. At 733 sq ft, this flat offers the perfect balance of space and coziness, making it an ideal place to call your own.

Don't miss out on this fantastic opportunity to own or rent a property that offers both comfort and convenience. Contact us today to arrange a viewing and take the first step towards making this lovely flat your new home!



Westhall Court, Sheldon Heath

- Retirement Apartment Flat
- 2 Bedrooms
- Off-Road Parking
- Gas Central Heating
- Reception Room
- Impressive Kitchen/Diner
- Double Glazing
- Ideal Family Home

Lounge/Diner

15'3" x 10'7" (4.65m x 3.23m)

Double glazed window to rear, double glazed door to rear, carpet flooring, electric fire place, ceiling light, skirting, under floor heating

Kitchen

9'3" x 10'7" (2.83m x 3.23m)

Open planed kitchen, Lino flooring, splash back tiling, ceiling lights, generous number of storage units, worktops, drainer sink with mixer tap, integrated electric hob and cooker and extractor fan, under floor heating

Bedroom 1

16'6" x 10'2" (5.04m x 3.10m)

Double glazed window to rear, carpet flooring, skirting, ceiling light, Built up wardrobes, under floor heating

Bedroom 2

11'10" x 8'0" (3.61m x 2.45m)

Double glazed window to rear, carpet flooring, skirting, ceiling light, under floor heating

Bathroom

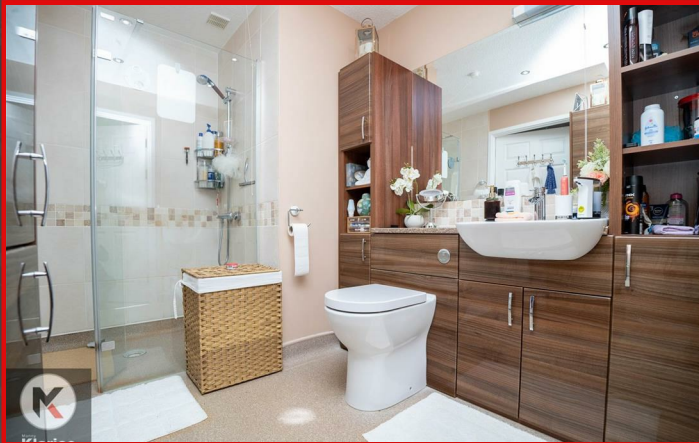
8'0" x 10'2" (2.44m x 3.10m)

Lino flooring, splash back tiling, shower unit, wash basin with mixer tap, extractor fan, toilet, storage units, under floor heating

Directions

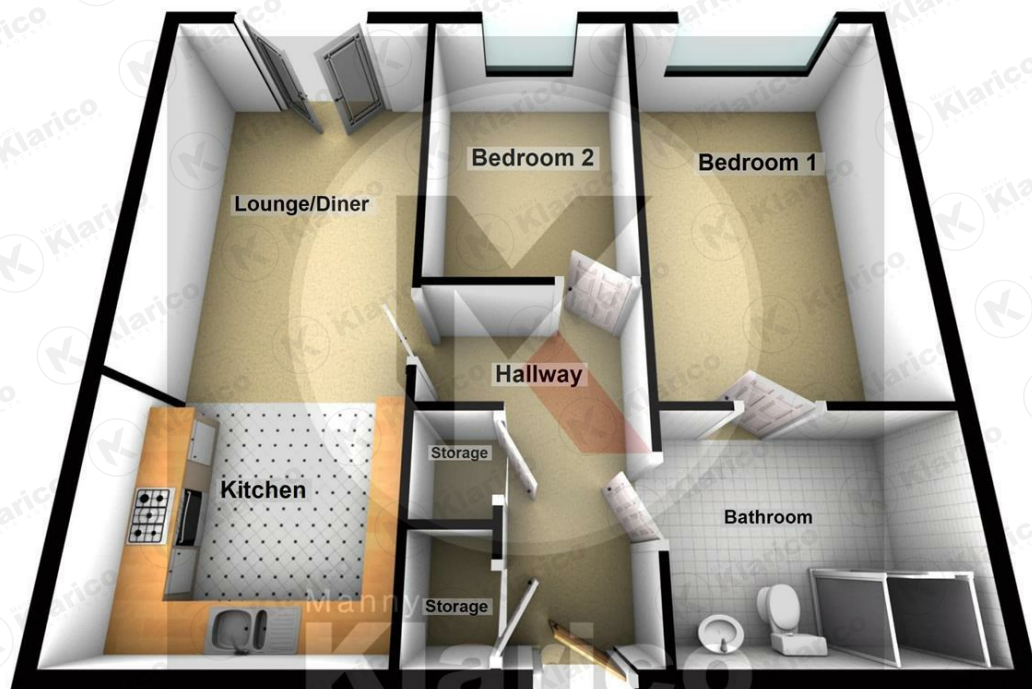


Westhall Court, Sheldon Heath



Westhall Court, Sheldon Heath

Ground Floor



Total area: approx. 68.1 sq. metres (732.6 sq. feet)

This plan is not to scale and is given merely as a guide to show the approximate location of one room to another. This is only used for illustration purposes and should be as such by any other party thus no responsibility is taken for any error, omission or misstatement. Any appliances, fixtures, systems etc have not been tested and therefore no guarantee can be provided.



Manny
Klarico
ESTATE AGENTS

332 Hob Moats Road
Birmingham
B92 8JT

0121 750 0390

www.mannyklarico.co.uk

