



Great Oldbury

Stonehouse

A taste of local life

bovishomes.co.uk

**Bovis
Homes** 



Welcome to Great Oldbury

Conveniently located in Stonehouse, Gloucestershire, just four miles from the market town of Stroud, our new 3- and 4-bedroom homes benefit from all the perks of being close to a range of amenities and idyllic countryside.

With its own local centre, nursery, pre-school and Primary Academy, Great Oldbury is on the outskirts of Stonehouse with the town's high street only a five-minute drive away. Here you'll find a selection of shops, restaurants, pubs, sports and health facilities.

Commuters have easy access to London, Bristol, Gloucester, Cheltenham, Worcester, Swindon and Reading with direct trains running from both Stonehouse and Stroud and the M5 only one mile away. Situated in the Cotswolds Natural Landscape there is a

plethora of countryside walks and cycle routes for you to explore and you can discover the local area from the Stroudwater Canal.

Our energy efficient homes are designed for different types of homeowners and feature open-plan kitchen and dining areas with many also benefitting from bi-fold doors, utility spaces and studies. So, if you're looking for a quality new home in the glorious Gloucestershire countryside with excellent transport links, your search ends here.

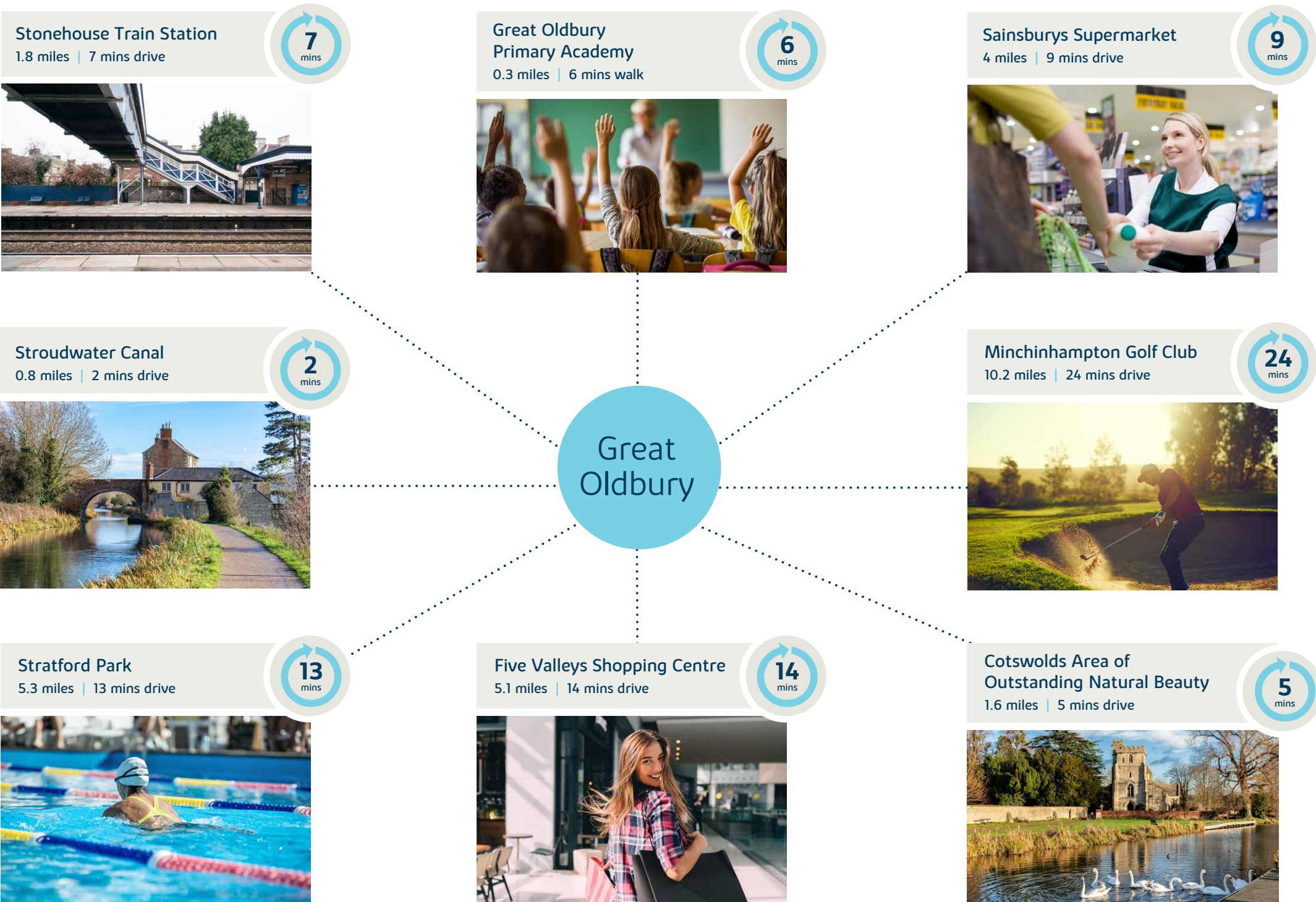


The perfect position

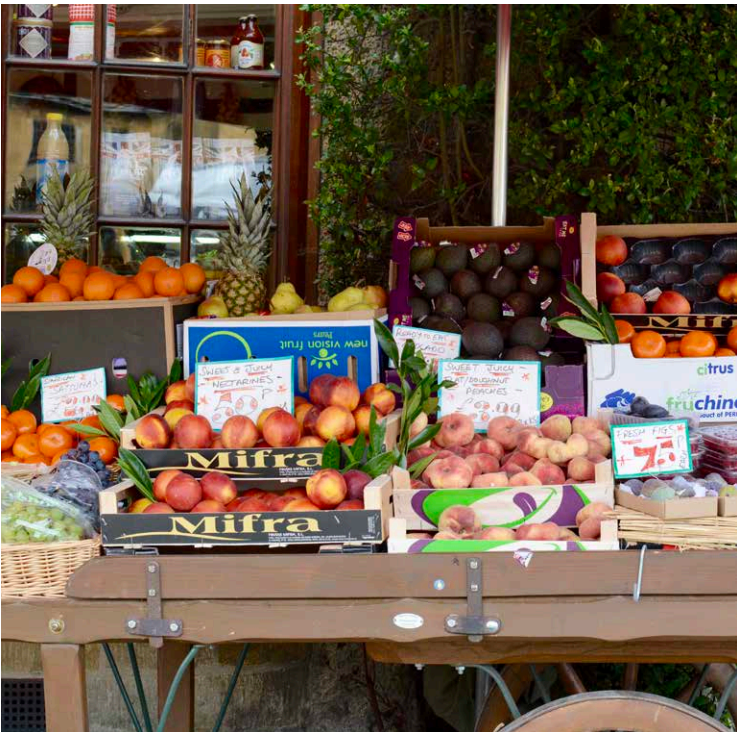
Education for everyone

There is a purpose-built nursery, pre-school and Primary Academy at Great Oldbury. For senior schools, Maidenhall Secondary School is rated as 'Good' by Ofsted and is a six-minute drive away. The leading Wycliffe Independent School caters for students of all ages, offering everything

from a nursery to sixth form. South Gloucestershire and Stroud College offers a broad curriculum for over-16s. Within easy reach is the University of Gloucestershire, the University of the West of England and Hartpury University and College.



Distances and timings are approximate and for reference only. Calculated using maps.google.co.uk



Personalise your new home with upgrades and extras from our **Select** range, where the choice is yours

Customise your kitchen with stylish worktops and the latest modern appliances and personalise your bathrooms with stunning ceramics.

Using the **Select** range there are various options allowing you to create your perfect property which is truly unique to you.

You can personalise every space in your home from kitchen cupboards and electrics to built in wardrobes and if you have a preference for flooring, you can select from our diverse range that includes luxurious carpets, stylish Karndean, ceramics and vinyl.

Pick up a **Select** brochure from a sales consultant today to find an extensive list of items available, including:

- Quartz or Granite worktops
- A selection of kitchen packages including integrated appliances
- Flooring
- Built-in wardrobes
- Upgraded tiling and many more!

The choice is yours – with **Select**^.



Purchase assistance schemes

Wherever you are in the home-buying market – a first-time buyer, looking to step up the property ladder or a downsizer – we have a variety of great purchase assistance schemes!

Smooth Move	Smooth Move is our scheme for all existing property owners to save time and money. We deal with the estate agents to sell your home and even pay the estate agents' fees!
Home Exchange	With Home Exchange you can have peace of mind knowing that we are your guaranteed buyer, meaning you'll have a chain-free move without the estate agents' fees.
Recommend a friend	Know someone who'd love a Bovis Home? Introduce a friend and we'll give you £500*
Shared Ownership	A scheme where you can purchase up to 75% share of your chosen home and pay a monthly rent on the remaining part.

*Terms and conditions apply. Offer applies to the sale of selected homes only. This voucher entitles the named referrer to £500, which will be paid by bank transfer once your nominated friend or family member has legally completed on their property purchase of a new home from us which is covered by the offer. Recommendations must be identified on your nominated friend or family member's first visit to the development. Offer does not apply on a sale to an individual already on our marketing database or on subsequent sales to repeat purchasers. Only one introduce a friend voucher may be used per sale. If the same individual is referred to us more than once, the first referral will take precedence.

^ Select upgrades availability subject to build stage. Please speak to a sales consultant for further details.

Scan me
for directions



Great Oldbury

Great Oldbury Drive, Stonehouse,
Gloucestershire

GL10 3WH

01453 358623

Cover photograph of Stonehouse. Not view from the development. The streetscene has been produced for illustrative purposes only. Please check the details of the homes you are interested in with our sales consultant.

Vistry Cotswolds region

Cleeve Hall, Cheltenham Road, Bishop's Cleeve, Cheltenham, Gloucestershire GL52 8GD. Telephone: 01242 388 502

Produced by the Vistry Group Design Studio.

When you have finished with this leaflet please recycle it.

130-HSTN2 DS08288 / 05.24





Great Oldbury

Stonehouse

Development plan

bovishomes.co.uk

**Bovis
Homes** 

Great Oldbury

Stonehouse

3 bedroom homes

-  The Apple
-  The Hazel
-  The Spruce
-  The Cypress
-  The Beech
-  Sage Home 

4 bedroom homes

-  The Juniper
-  The Chestnut
-  The Aspen
-  The Alder
-  The Orchard
-  Sage Home 

Pre-sold homes

-  1 and 2 bedroom apartments
-  2 bedroom homes
-  3 bedroom homes
-  4 bedroom homes

 Sage Homes
built by Bovis Homes

bcp bin collection point
bs bin store
cs cycle store
v visitor space



This plan has been produced for home identification purposes only and is not to scale. The development layout, landscaping and tenure of all dwellings may be subject to change throughout the course of the development. Finishes and materials may vary from those shown on the plan. Please check the details of your chosen plot and house type with the sales consultant. Development layout plan correct at time of production.



3 bedroom Sage Home

Homes 289 & 290



built
by



3 bedroom Sage Home

Homes 289 & 290

Ground floor	metres	feet / inches
Kitchen / dining room	5.19 x 3.64	17' 0" x 11' 11"
Sitting room	4.17 x 3.69	13' 8" x 12' 1"

First floor	metres	feet / inches
Bedroom 1	4.15 x 2.95	13' 7" x 9' 8"
Bedroom 2	4.50 x 2.55	14' 9" x 8' 5"
Bedroom 3	4.15 x 2.15	13' 7" x 7' 1"

ovn	oven	ffzs	fridge freezer space
h	hob	cup'd	cupboard
ds	dishwasher space	◀ ▶	measuring points
ws	washing machine space		

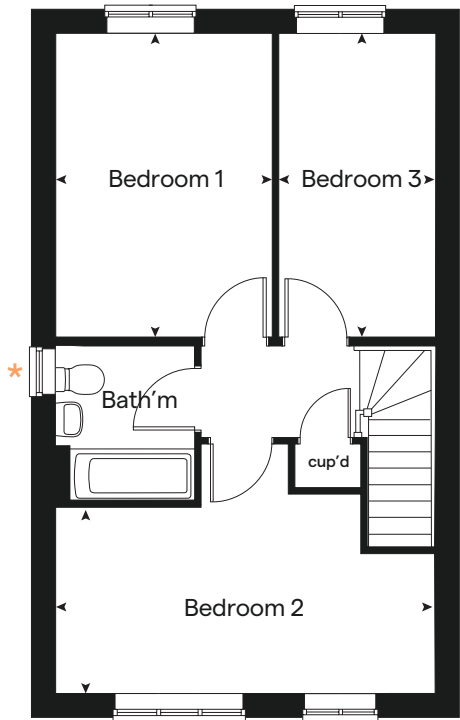
The floorplan has been produced for illustrative purposes only. Room sizes shown are between arrow points as indicated on plan. The dimensions have tolerances of + or -50mm and should not be used other than for general guidance. If specific dimensions are required, enquiries should be made to the sales consultant. The floor plans shown are not to scale. Measurements are based on the original drawings. Slight variations may occur during construction.

The illustrations shown are computer generated impressions of how the property may look and are indicative only. External details or finishes may vary on individual plots and homes may be built in either detached or attached styles depending on the development layout. Exact specifications, window styles and whether a property is left or right handed may differ from plot to plot. Please speak to our sales consultant for specific plot details.

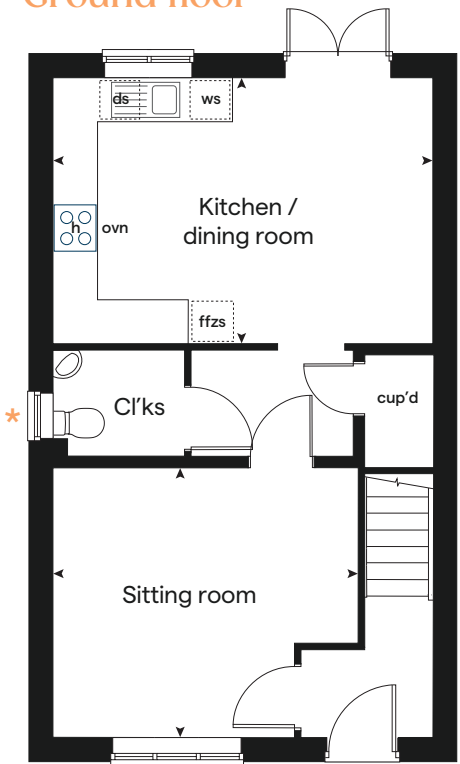
* Windows apply to selected plots only.
Please see sales consultant for further details.

Produced by the Vistry Group Design Studio.
When you have finished with this leaflet please recycle it.
The Juniper DS08288 / 05.24

First floor



Ground floor





3 bedroom Sage Home

Homes 180 - 183



Sage
Homes

built
by



3 bedroom Sage Home

Homes 180-183

Ground floor	metres	feet / inches
Kitchen / dining area	5.19 x 2.99	17' 0" x 9' 10"
Sitting room	4.17 x 3.66	13' 8" x 12' 0"

First floor		
Bedroom 1	3.54 x 3.29	11' 7" x 10' 9"
Bedroom 2	2.95 x 2.72	9' 8" x 8' 11"
Bedroom 3	3.48 x 2.15	11' 5" x 7' 1"

ovn	oven	ffzs	fridge freezer space
h	hob	cup'd	cupboard
ds	dishwasher space	◀ ▶	measuring points
ws	washing machine space		

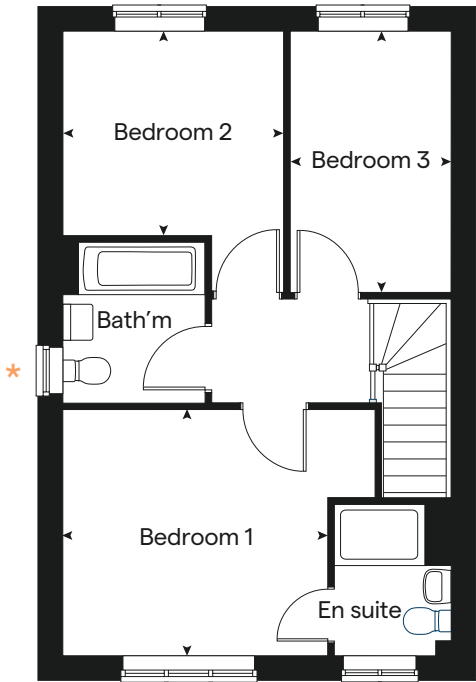
The floorplan has been produced for illustrative purposes only. Room sizes shown are between arrow points as indicated on plan. The dimensions have tolerances of + or -50mm and should not be used other than for general guidance. If specific dimensions are required, enquiries should be made to the sales consultant. The floor plans shown are not to scale. Measurements are based on the original drawings. Slight variations may occur during construction.

The illustrations shown are computer generated impressions of how the property may look and are indicative only. External details or finishes may vary on individual plots and homes may be built in either detached or attached styles depending on the development layout. Exact specifications, window styles and whether a property is left or right handed may differ from plot to plot. Please speak to our sales consultant for specific plot details.

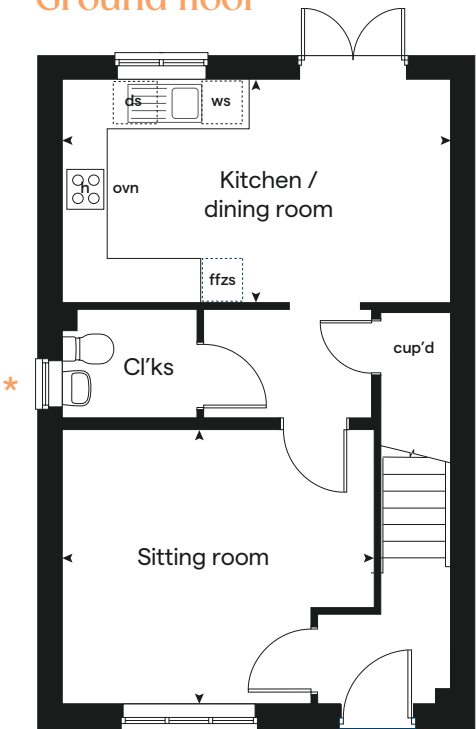
* Window applies to selected plots only. Please see sales consultant for further details.

Produced by the Vistry Group Design Studio.
When you have finished with this leaflet please recycle it.
The Juniper DS08288 / 05.24

First floor



Ground floor





3 bedroom Sage Home

Homes 204, 272, 314 & 327



built
by



3 bedroom Sage Home

Homes 204, 272,
314 & 327

Ground floor	metres	feet / inches
Kitchen / dining area	5.52 x 3.12	18' 1" x 10' 2"
Sitting room	4.41 x 3.40	14' 6" x 11' 2"

First floor		
Bedroom 1	4.09 x 3.28	13' 5" x 10' 9"
Bedroom 2	3.28 x 2.83	10' 9" x 9' 3"
Bedroom 3	3.52 x 2.16	11' 7" x 7' 1"

ovn	oven	ffzs	fridge freezer space
h	hob	cup'd	cupboard
ds	dishwasher space	◀ ▶	measuring points
ws	washing machine space		

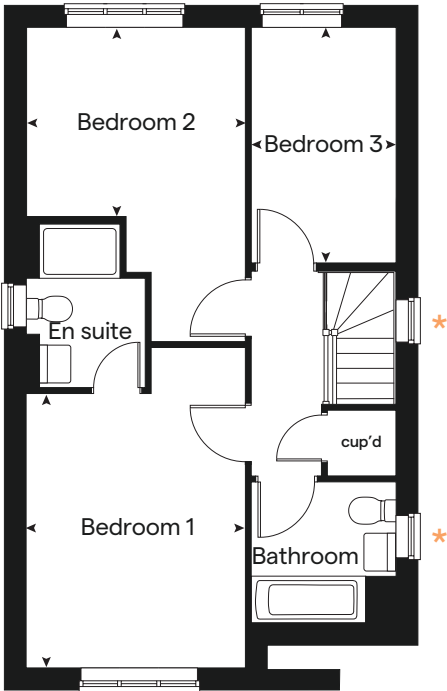
The floorplan has been produced for illustrative purposes only. Room sizes shown are between arrow points as indicated on plan. The dimensions have tolerances of + or -50mm and should not be used other than for general guidance. If specific dimensions are required, enquiries should be made to the sales consultant. The floor plans shown are not to scale. Measurements are based on the original drawings. Slight variations may occur during construction.

The illustrations shown are computer generated impressions of how the property may look and are indicative only. External details or finishes may vary on individual plots and homes may be built in either detached or attached styles depending on the development layout. Exact specifications, window styles and whether a property is left or right handed may differ from plot to plot. Please speak to our sales consultant for specific plot details.

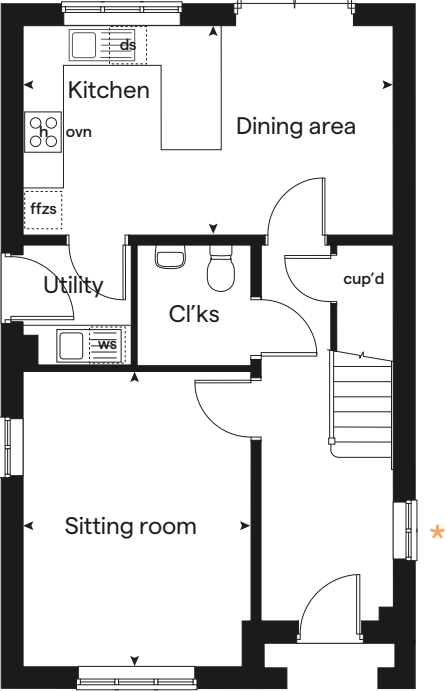
★ Windows apply to selected plots only.
Please see sales consultant for further details.

Produced by the Vistry Group Design Studio.
When you have finished with this leaflet please recycle it.
The Juniper DS08288 / 05.24

First floor



Ground floor





3 bedroom Sage Home

Homes 328 - 332



built
by



3 bedroom Sage Home

Homes 328 - 332

Ground floor	metres	feet / inches
Kitchen / dining room	4.74 x 2.91	15' 6" x 9' 7"
Sitting room	4.00 x 3.72	13' 1" x 12' 2"

First floor	metres	feet / inches
Bedroom 2	4.74 x 2.62	15' 7" x 8' 7"
Bedroom 3	3.39 x 2.49	11' 1" x 8' 2"

Second floor	metres	feet / inches
Bedroom 1	3.62 x 3.02	11' 11" x 9' 11"

ovn	oven	ffzs	fridge freezer space
h	hob	cup'd	cupboard
ds	dishwasher space	◀ ▶	measuring points
ws	washing machine space		

The floorplan has been produced for illustrative purposes only. Room sizes shown are between arrow points as indicated on plan. The dimensions have tolerances of + or -50mm and should not be used other than for general guidance. If specific dimensions are required, enquiries should be made to the sales consultant. The floor plans shown are not to scale. Measurements are based on the original drawings. Slight variations may occur during construction.

The illustrations shown are computer generated impressions of how the property may look and are indicative only. External details or finishes may vary on individual plots and homes may be built in either detached or attached styles depending on the development layout. Exact specifications, window styles and whether a property is left or right handed may differ from plot to plot. Please speak to our sales consultant for specific plot details.

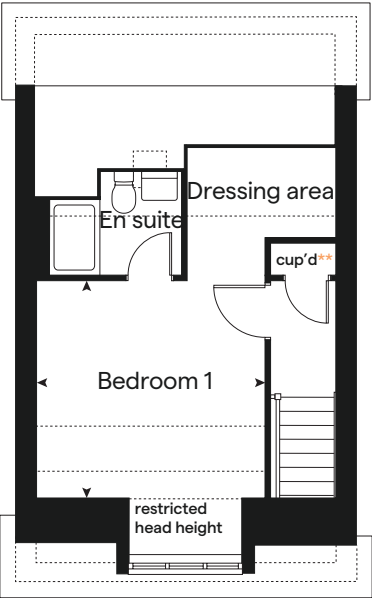
- * Windows apply to selected plots only.
Please see sales consultant for further details.
- ** Solar panel service access.
Please see sales consultant for further details.

Produced by the Vistry Group Design Studio.
When you have finished with this leaflet please recycle it.
The Juniper DS08288 / 05.24

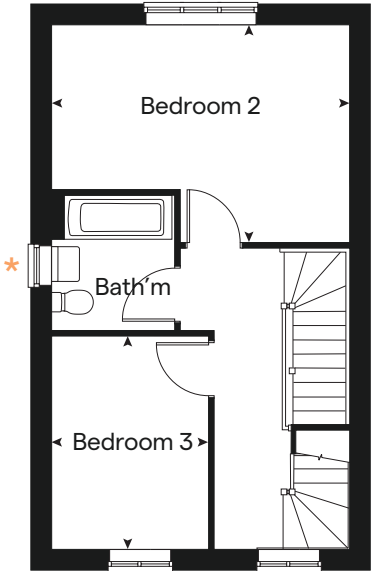


built by
Bovis Homes

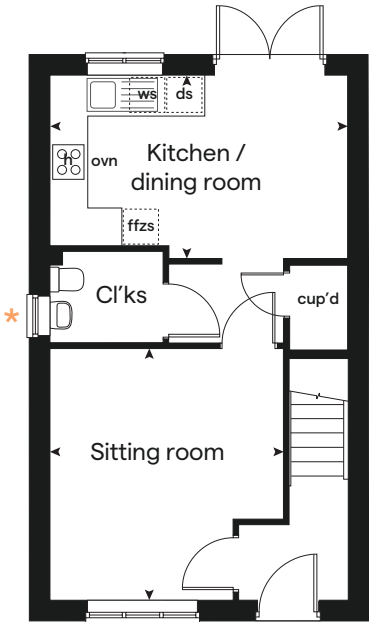
Second floor



First floor



Ground floor





3 bedroom Sage Home

Homes 179, 184, 195, 245, 339 & 340



built
by



3 bedroom Sage Home

Homes 179, 184, 195,
245, 339 & 340

Ground floor	metres	feet / inches
Kitchen	3.16 x 2.69	10' 4" x 8' 10"
Dining area	3.14 x 2.36	10' 4" x 7' 9"
Sitting room	5.53 x 3.32	18' 2" x 10' 11"

First floor	metres	feet / inches
Bedroom 1	3.34 x 2.94	10' 11" x 9' 8"
Bedroom 2	3.60 x 3.27	11' 10" x 10' 9"
Bedroom 3	3.63 x 2.17	11' 11" x 7' 2"

ovn	oven	ffzs	fridge freezer space
h	hob	cup'd	cupboard
ds	dishwasher space	◀ ▶	measuring points
ws	washing machine space		

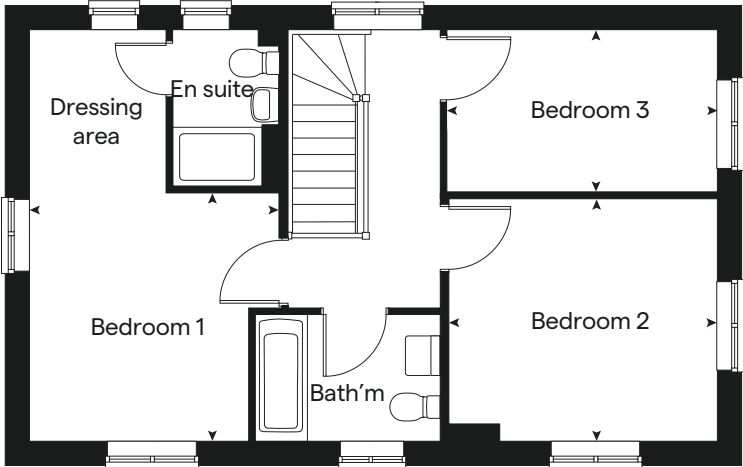
The floorplan has been produced for illustrative purposes only. Room sizes shown are between arrow points as indicated on plan. The dimensions have tolerances of + or -50mm and should not be used other than for general guidance. If specific dimensions are required, enquiries should be made to the sales consultant. The floor plans shown are not to scale. Measurements are based on the original drawings. Slight variations may occur during construction.

The illustrations shown are computer generated impressions of how the property may look and are indicative only. External details or finishes may vary on individual plots and homes may be built in either detached or attached styles depending on the development layout. Exact specifications, window styles and whether a property is left or right handed may differ from plot to plot. Please speak to our sales consultant for specific plot details.

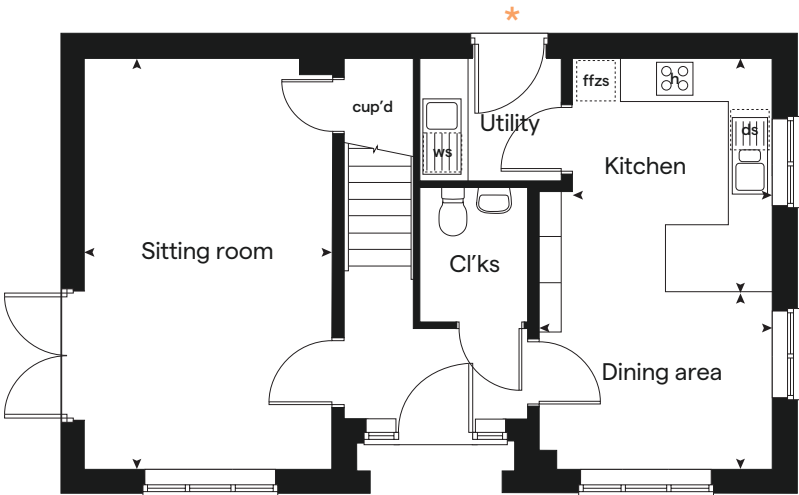
★ Door applies to selected plots only.
Please see sales consultant for further details.

Produced by the Vistry Group Design Studio.
When you have finished with this leaflet please recycle it.
The Juniper DS08288 / 05.24

First floor



Ground floor





3 bedroom Sage Home

Homes 193, 321 & 322



built
by



3 bedroom Sage Home

Homes 193,
321 & 322

Ground floor	metres	feet / inches
Kitchen	3.16 x 2.69	10' 4" x 8' 10"
Dining area	3.14 x 2.36	10' 4" x 7' 9"
Sitting room	5.53 x 3.32	18' 2" x 10' 11"

First floor	metres	feet / inches
Bedroom 1	3.34 x 2.94	10' 11" x 9' 8"
Bedroom 2	3.60 x 3.27	11' 10" x 10' 9"
Bedroom 3	3.63 x 2.17	11' 11" x 7' 2"

ovn	oven	ffzs	fridge freezer space
h	hob	cup'd	cupboard
ds	dishwasher space	◀ ▶	measuring points
ws	washing machine space		

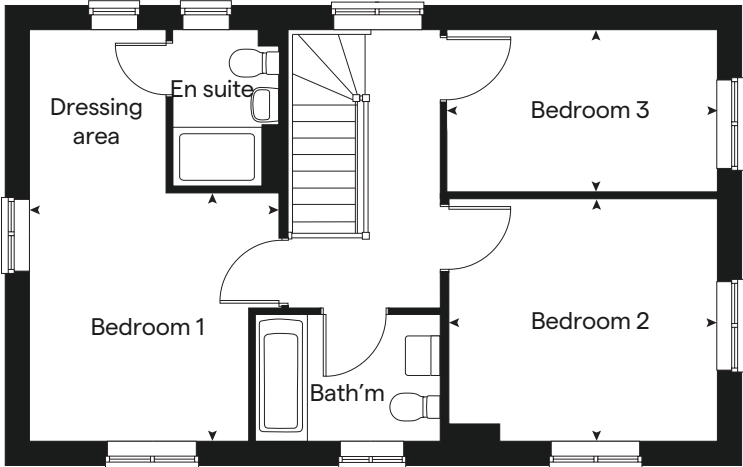
The floorplan has been produced for illustrative purposes only. Room sizes shown are between arrow points as indicated on plan. The dimensions have tolerances of + or -50mm and should not be used other than for general guidance. If specific dimensions are required, enquiries should be made to the sales consultant. The floor plans shown are not to scale. Measurements are based on the original drawings. Slight variations may occur during construction.

The illustrations shown are computer generated impressions of how the property may look and are indicative only. External details or finishes may vary on individual plots and homes may be built in either detached or attached styles depending on the development layout. Exact specifications, window styles and whether a property is left or right handed may differ from plot to plot. Please speak to our sales consultant for specific plot details.

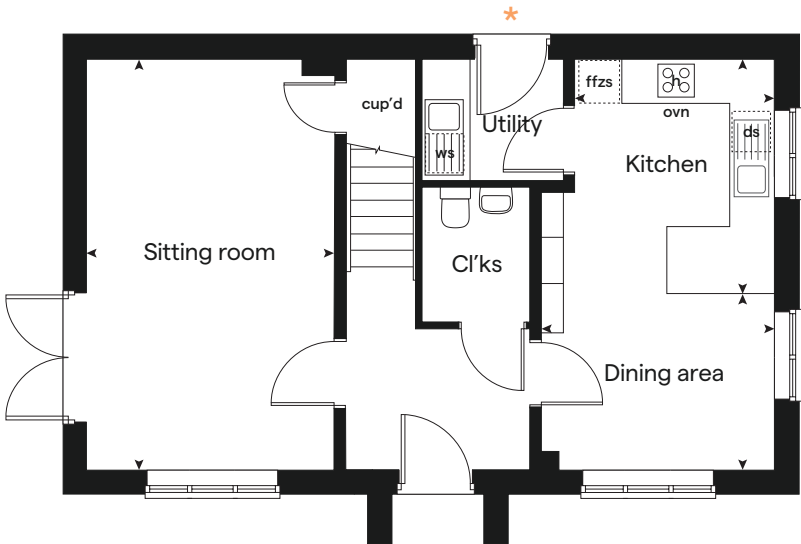
★ Door applies to selected plots only.
Please see sales consultant for further details.

Produced by the Vistry Group Design Studio.
When you have finished with this leaflet please recycle it.
The Juniper DS08288 / 05.24

First floor



Ground floor





4 bedroom Sage Home

Home 341



built
by



4 bedroom Sage Home

Home 341

Ground floor	metres	feet / inches
Kitchen / dining area	7.77 x 3.37	25' 6" x 11' 1"
Sitting room	5.04 x 3.39	16' 6" x 11' 1"
Study	2.01 x 2.01	6' 7" x 6' 7"

First floor		
Bedroom 1	4.52 x 3.81	14' 10" x 12' 6"
Bedroom 2	3.87 x 3.11	12' 8" x 10' 2"
Bedroom 3	4.07 x 2.42	13' 4" x 7' 11"
Bedroom 4	3.61 x 2.45	11' 10" x 8' 1"

ovn	oven	ffzs	fridge freezer space
h	hob	ldr	larder
ds	dishwasher space	cup'd	cupboard
ws	washing machine space	◀ ▶	measuring points

The floorplan has been produced for illustrative purposes only. Room sizes shown are between arrow points as indicated on plan. The dimensions have tolerances of + or -50mm and should not be used other than for general guidance. If specific dimensions are required, enquiries should be made to the sales consultant. The floor plans shown are not to scale. Measurements are based on the original drawings. Slight variations may occur during construction.

The illustrations shown are computer generated impressions of how the property may look and are indicative only. External details or finishes may vary on individual plots and homes may be built in either detached or attached styles depending on the development layout. Exact specifications, window styles and whether a property is left or right handed may differ from plot to plot. Please speak to our sales consultant for specific plot details.

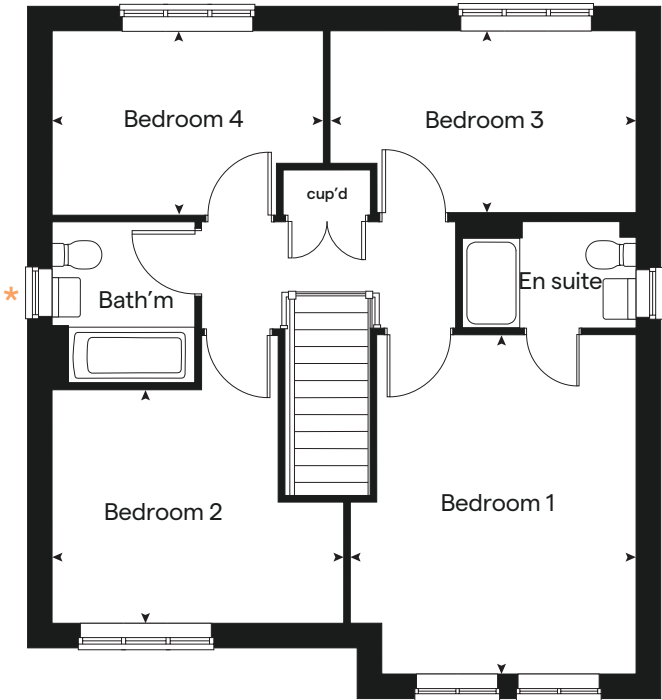
* Windows apply to selected plots only.
Please see sales consultant for further details.

Produced by the Vistry Group Design Studio.
When you have finished with this leaflet please recycle it.
The Juniper DS08288 / 05.24

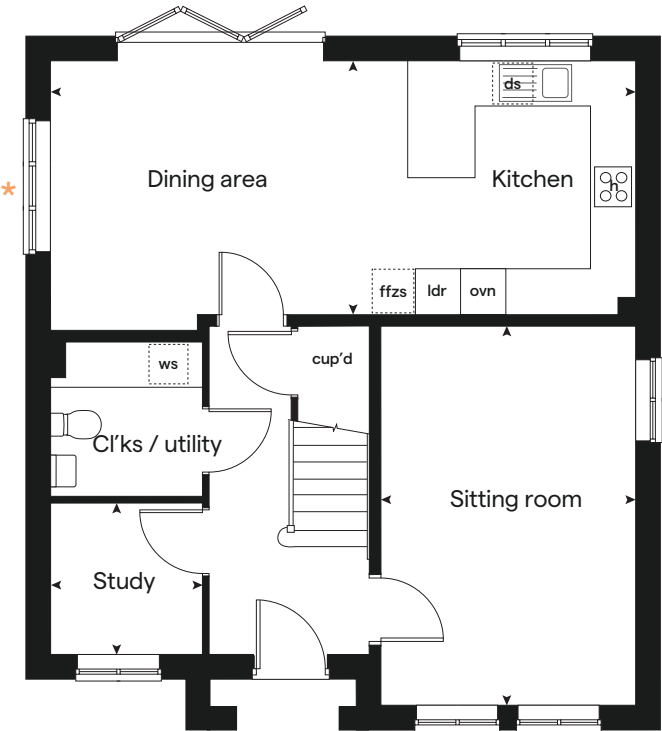


built by
Bovis Homes

First floor



Ground floor





4 bedroom Sage Home

Homes 199, 279, 280 & 338



Sage
Homes

built
by

Bovis
Homes



4 bedroom Sage Home

Homes 199, 279,
280 & 338

Ground floor	metres	feet / inches
Kitchen / dining / family area	7.21 x 3.52	23' 8" x 11' 7"
Sitting room	4.55 x 3.04	14' 11" x 10' 0"
Study	2.34 x 1.85	7' 8" x 6' 1"

First floor		
Bedroom 1	3.47 x 2.85	11' 5" x 9' 4"
Bedroom 2	3.65 x 2.84	12' 0" x 9' 4"
Bedroom 3	3.61 x 2.38	11' 10" x 7' 10"
Bedroom 4	3.52 x 2.38	11' 7" x 7' 10"

ovn	oven	ffzs	fridge freezer space
h	hob	ldr	larder
ds	dishwasher space	cup'd	cupboard
ws	washing machine space	◀ ▶	measuring points

The floorplan has been produced for illustrative purposes only. Room sizes shown are between arrow points as indicated on plan. The dimensions have tolerances of + or -50mm and should not be used other than for general guidance. If specific dimensions are required, enquiries should be made to the sales consultant. The floor plans shown are not to scale. Measurements are based on the original drawings. Slight variations may occur during construction.

The illustrations shown are computer generated impressions of how the property may look and are indicative only. External details or finishes may vary on individual plots and homes may be built in either detached or attached styles depending on the development layout. Exact specifications, window styles and whether a property is left or right handed may differ from plot to plot. Please speak to our sales consultant for specific plot details.

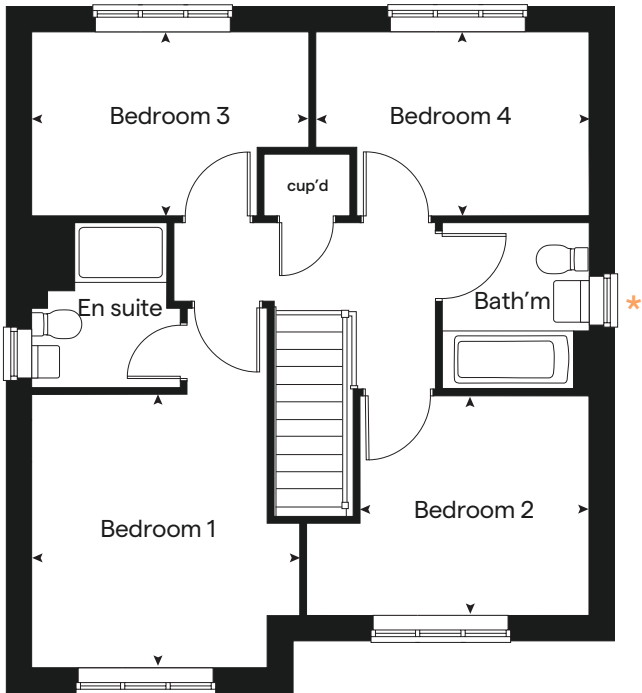
* Windows apply to selected plots only.
Please see sales consultant for further details.

Produced by the Vistry Group Design Studio.
When you have finished with this leaflet please recycle it.
The Juniper DS08288 / 05.24

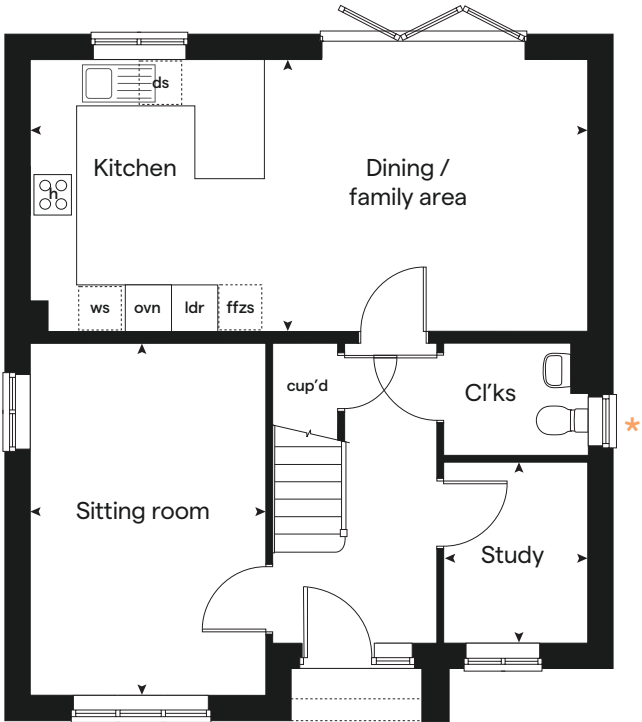


built by
Bovis Homes

First floor



Ground floor





Great Oldbury

Stonehouse

Specification



built
by



Great Oldbury Stonehouse

Use this guide to see what features are included in your new home.



Kitchen

Symphony Konzept range kitchen with laminate worktop	■	■	■	■	■	■	■	■
Stainless steel sink and drainer (single bowl) with chrome mixer tap	■	■	■	■	■	■		■
Stainless steel sink and drainer (single bowl) with chrome mixer tap in utility			■		■	■		
Indesit hob (60cm) with Indesit built-in single under oven, with stainless steel splashback and integrated silver hood	■	■	■	■	■	■		■
White pendant light holder	■	■	■	■	■	■		■
Fridge/ freezer space	■	■	■	■	■	■		■
Space for integrated dishwasher with plumbing and electrics	■	■	■	■	■	■		■
Space for washing machine with plumbing and electrics in kitchen	■	■		■				■
Space for washing machine with plumbing and electrics in utility			■		■	■		■

Bathrooms and en suite(s)

Ideal Standard contemporary white Tempo sanitaryware	■	■	■	■	■	■	■	■
Ideal Standard close coupled WC to cloakroom	■	■	■	■	■	■		■
Ideal Standard low profile shower tray with glass enclosure in ensuite		■	■	■	■	■		■
Handheld hair wash attachment in bathroom		■	■	■	■	■		■
Shower over the bath	■							
Choice of standard Porcelanosa wall tiling (splashback, 450mm height over bath, and full-height to shower cubicle)	■	■	■	■	■	■		■
White batten light holder	■	■	■	■	■	■		■
Waste water heat recovery system	■	■	■	■	■	■		■

Bedrooms

Dressing area to bedroom 1					■	■	■		
----------------------------	--	--	--	--	---	---	---	--	--

- Fitted as standard - included in the property
- * Subject to stage of construction

Doors and Windows

Front door with multi-point security locking system and security chain	■	■	■	■	■	■	<div><div></div><div></div></div>	
PVCu double glazing to windows	■	■	■	■	■	■		■
Double glazed PVCu French doors	■	■	■	■	■	■		
Double glazed bi-fold doors								■
Paving outside French / bi-fold doors	■	■	■	■	■	■		■

General

PV solar panels	■	■	■	■	■	■	■	■
White painted walls and smooth white ceilings	■	■	■	■	■	■	■	■
TV point to lounge and family room (where applicable)	■	■	■	■	■	■	■	■
Master telephone socket to lounge and study where applicable	■	■	■	■	■	■	■	■
Ideal combi-boiler with Honeywell heating control and room thermostat(s)	■	■	■	■	■	■	■	■
Thermostatic valves to all radiators (with the exception of rooms with separate thermostat control)	■	■	■	■	■	■	■	■
Contemporary lantern to front door and wiring only to the rear door	■	■	■	■	■	■	■	■
Mains wired smoke detectors with battery back-up	■	■	■	■	■	■	■	■
Battery powered Carbon Monoxide detector (wall mounted) to be provided for each floor	■	■	■	■	■	■	■	■
Power to garage (where in curtilage of the plot)						■	■	■
Electric vehicle charging point	■	■	■	■	■	■	■	■
NHBC Buildmark cover	■	■	■	■	■	■	■	■
First two years' customer service support from Linden Homes	■	■	■	■	■	■	■	■

The specification shown is correct at the time of production. Sage Homes is continually reviewing and updating the specification on all house / apartment types and therefore reserves the right to change specification details. Photographs depict typical Sage Homes interiors and may include optional upgrades. For full details regarding the current specification and finishes, please speak to our sales consultant.

Produced by the Vistry Group Design Studio.

DS08288 / 06.24

