



McCarthy & Stone

— Retirement living to the full —



Artist impression

Retirement Living PLUS

At Wayfarer Place, Alresford







# A warm welcome to Wayfarer Place

Wayfarer Place is a stunning development of 56 one and two bedroom apartments brought to you by McCarthy & Stone - the only housebuilder to win the Home Builders Federation 5-star award every year since the awards began.

Designed exclusively for the over 70s, Wayfarer Place allows you to carry on living independently in a home you own. With the help of on-site flexible care and support<sup>^</sup>, a bistro<sup>^</sup> serving freshly prepared food and management on-site 24 hours a day. Wayfarer Place has everything you need to relax and enjoy an independent retirement.



<sup>^</sup>Extra charge applies.



"I really enjoy being part of the active community here, and everyone has been so friendly and welcoming. I've always been sociable, so it's lovely having other people around and lots of activities to get involved in, such as coffee mornings, film nights, games evenings, and of course, the art classes."

Homeowner, Bowes Lyon Court



## Stylish facilities for you to enjoy

**Wayfarer Place has been designed to allow you to enjoy your retirement whilst offering additional peace of mind for homeowners and their families. Many of our homeowners say they wish that they had made the move to McCarthy & Stone years before they did and the on-site facilities are often part of the benefits they recommend to friends.**

### In-house dining experience

Our counter service bistro<sup>^</sup> is conveniently located in the Warwick lounge and is a lovely place to meet up with neighbours. Serving a hot dish of the day as well as various light snacks and specialist teas and coffees<sup>^</sup>, the bistro is perfect for when you don't want to cook for yourself.

### Salon

The salon at Wayfarer Place provides the perfect sanctuary in which to retreat and relax. Book your treatment in advance and enjoy pampering in the comfort of your development<sup>^</sup>.

### Socialising with new friends

Socialise as much or as little as you like in the stunning communal areas. If you fancy a cup of tea or coffee, you can join your neighbours in the Warwick lounge. When you want a change of scenery you can sit back and relax in the landscaped gardens that are thoughtfully designed to delight you throughout the seasons.

Your dedicated Estates Team are also on-hand to facilitate social events. It's up to our homeowners to decide what events and activities happen and the Estates Team is on-hand to help organise them. There's everything from book clubs, film nights and day trips; the great thing is, you choose how much or how little you get involved.

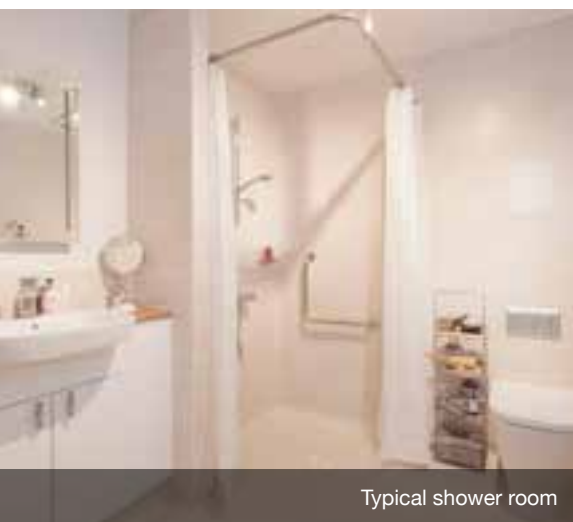
<sup>^</sup>Extra charge applies.







Typical kitchen



Typical shower room



Typical living room

## Imagine yourself here

**Picture yourself in a spacious and stunning new apartment at Wayfarer Place, with more time to do the things you love. Our developments are thoughtfully designed and have everything you need to enjoy a full and active retirement.**

### Designed with you in mind

All our Retirement Living PLUS developments are wheelchair friendly and there's a secure mobility scooter room to store and charge your vehicle<sup>#</sup>. If bending and lifting is a concern, you'll notice that the ovens and plug sockets are a convenient height. There is also slip resistant tiling in the shower room, a walk-in shower and lever taps for ease of use.

The safety features extend into the development where you'll find a lift and handrails along the hallways.

### Peace of mind guaranteed

Knowing that help is at hand creates a sense of well-being. There's a 24 hour emergency call system provided by a personal pendant and call points in your bedroom and bathroom as well as on-site management 24 hours a day<sup>†</sup>. You'll be able to see who's calling for you at the development front door with the camera entry system linked to your TV screen. What's more, if you spend a lot of time travelling or visiting family, an apartment at Wayfarer Place lets you 'lock up and leave', so you can go away in the knowledge that everything is safe and secure.

<sup>#</sup>Subject to availability, <sup>†</sup> Emergency cover between 11pm-7am.



Typical living room



Typical kitchen



Typical bedroom

# Your new apartment in detail

## General

- Double glazing to all windows
- Balcony or private patio to selected apartments, letting you enjoy your own outside space
- Walk-in wardrobe in all apartments
- Telephone and television point in living room and bedrooms
- Sky/Sky+ connection point in living room\*
- Large Club lounge and counter service on-site bistro<sup>#^</sup>
- On-site parking<sup>#^</sup>
- NHBC 10 year warranty

## Kitchen

- Fitted kitchen with integrated Bosch fridge freezer, Bosch mid-height oven and Bosch ceramic hob
- Stainless steel Bosch cooker hood and pewter coloured glass splashback
- Granite composite sink
- Lever mixer taps

## Shower rooms

- Fitted wet room with vinyl flooring
- Illuminated mirror complete with integrated shaver socket
- Extractor ventilation
- White sanitary ware with high quality fittings
- Grab rail in shower
- WC (two bedroom apartments only)<sup>#</sup>.

## Safety and security

- Video door entry system
- 24 hour emergency call system with a personal pendant and call point in the bathroom
- Smoke detector and intruder alarm
- Illuminated light switches to bathroom and main bedroom
- On-site Estates Team 24-hours a day<sup>†</sup>

## Heating and finishes

- Panel heating
- Walls painted in neutral colour emulsion
- Oak veneered doors
- Chrome door furniture



Typical shower room

This specification is for guidance only, some items may vary. Please check with Sales Executive for further details. Images are indicative only. \*Sky/Sky+ subject to Sky subscription. #Subject to availability. ^Additional charges apply. † Emergency cover between 11pm-7am.





Typical bedroom



Typical Club lounge



Typical salon



Artists impression, landscaped gardens

## Wayfarer Place features and benefits

- **Club lounge** a welcoming space for socialising with friends and family.
- **On-site bistro**<sup>^</sup> relax and enjoy freshly prepared food daily.
- **24 hour on-site management** provided by our care and management company YourLife.
- **Guest suite**<sup>^#</sup> perfect if you need some extra room when friends and family come to visit.
- **Beautiful landscaped gardens** maintained by us for you to enjoy all year around.
- **Flexible support**<sup>^</sup> we can provide optional flexible care packages that suit your needs.
- **Domestic assistance** your service charge includes an hour per week, to use as you wish.
- **Mobility scooter store**<sup>#</sup> to park and charge your scooter.
- **Car parking**<sup>^#</sup> please ask the Sales Executive for further details
- **Salon**<sup>^</sup> for unwinding and rejuvenating! Book your usual treatments in the comfort of your development.
- **Communal laundry room**  
Washing machines and tumble dryers are at waist height to make life a bit easier.

<sup>^</sup>Extra charge applies, <sup>#</sup>Subject to availability.





“Once my parents saw the beautiful apartments and amenities, and met the residents and staff, they had no hesitation in deciding to buy.”

Julia Cramm, Relative of homeowner, Bembridge



## Flexible care and support

With McCarthy & Stone, everything is designed to help you get the most out of life. You can relax in the knowledge that with a Retirement Living PLUS development, there's someone there day and night, should you need assistance in an emergency. That's the real benefit; you can carry on living independently, but should you need a bit of support, now or in the future, there's a qualified and reliable team right on your doorstep.

- 24 hour on-site management to give you around the clock help and support in an emergency.
- Estate Manager and YourLife team to ensure you get all the care and support you need.
- Domestic Assistance to help you with jobs like dusting, vacuuming or changing the bed (one hour per week is included in your service charge).
- Personal care packages from 15 minute increments, which are totally flexible and can be organised with the YourLife team^

## YourLife Management Services

Care and support at our developments is delivered by YourLife Management Services which was created in 2010 as a joint venture between McCarthy & Stone and the highly regarded care provider, Somerset Care. You can be confident you are in good hands knowing it is regulated by the **Care Quality Commission** in England (in Scotland, the care regulator is the Care Inspectorate and in Wales the care regulator is the Care and Social Services Inspectorate).

Everyone who works for YourLife is totally dedicated to what they do, and they go that extra mile to provide exceptional levels of care and support.

For your peace of mind, each staff member has a certificate from the DBS (The Disclosure and Barring Service) and we invest in their training to ensure they have all the skills they need to provide you with a fantastic service. If you think you would benefit from these services, you can arrange a confidential well-being assessment with the Estate Manager to make sure everything is in place from the moment you move in.

^Extra charge applies.



## A completely flexible service tailored to suit your needs

With Retirement Living PLUS, the care and support you receive is every bit as important as the beautiful apartment you'll move into. Our wonderful care and management team is very much an integral part of day-to-day life and you'll come to know them well.

### Personal care

Our team is on hand around the clock to make life easier for you. There's a whole range of services on offer like helping you get dressed, making sure you take your medication on time or giving you more support if you've recently come out of hospital.

Your service charge includes one hour's domestic assistance every week. You can use the time to get help with everyday tasks, leaving you more time to do the things you enjoy.

If you would like more than your one hour of assistance, you can book any of these services from as little as a 15 minute session for an extra charge. This flexibility means you only pay for the care and support you need, when you need it.

If you need more help with personal care or other domestic chores, you can choose to 'top up' more support from the following services:

### Domestic assistance

You can add in extra time to help with things like changing the bed, cleaning the bathroom, shopping for groceries or posting letters.

### Lifestyle support

If you want to take a shopping trip or have an evening at the theatre, one of our team will be happy to assist you.

### Laundry service

The team can take care of all your laundry requirements and return your items washed, dried and ironed within 24 hours.

**"While at the moment there is no need for me to make use of the extra help available, it is comforting to know support is on-hand should I need it – I've made a future-proof move!"**

Mr. Payne, Northampton





High Street

## Enjoy life in this stunning market town

A convenient location in the heart of the quaint Georgian town of Alresford, Wayfarer Place provides the perfect location for you to enjoy an enjoyable and independent retirement.

Famous for being home to the Watercress Line heritage railway, Alresford boasts a bustling community which hosts a number of annual events including the Watercress festival, Alresford Show, Alresford Fayre and carol singing, for you to attend at your leisure.

Located on the Dean, Wayfarer Place offers a range of handy, local amenities right on your doorstep. Homeowners can enjoy a selection of eateries and cafes, independent and well known shops, four national banks and a Tesco Metro and Co-op Local. In addition, a conservation area and the beautiful River Arle is just a stones throw from the development - providing a picturesque setting for spending time with friends and family.

Wayfairer Place is in an excellent location to reach nearby areas, with good connections to London and surrounding towns including Alton and Winchester. A bus stop is located a short walk away, opposite the nearby Co-op local.



Local Area



High Street





High Street



Alresford Golf Club



St. John's Church



Alresford Railway, Watercress Line

**Living at Wayfarer Place**  
you can do as much or as little as you want to...

# Typical one bedroom apartment

## Living (Max.)

25' 2" x 10' 7"

7680mm x 3220mm

## Kitchen (Max.)

10' 0" x 8' 1"

3030mm x 2473mm

## Bedroom 1 (Max.)

17' 3" x 10' 3"

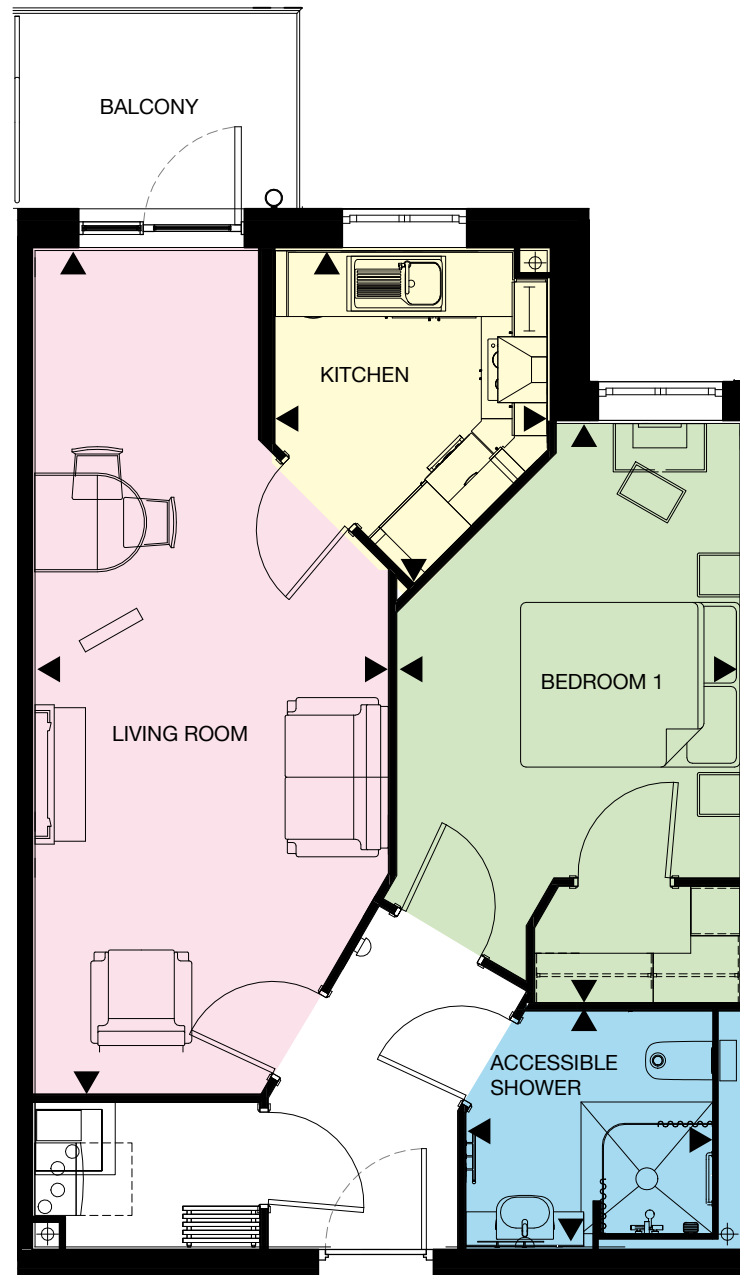
5275mm x 3130mm

## Shower Room (Max.)

7' 1" x 7' 4"

2147mm x 2247mm

## Balcony





# Typical two bedroom apartment

## Living (Max.)

22'-11" x 12'-7"

7680mm x 3305mm

## Kitchen (Max.)

10'-0" x 8'-1"

3030mm x 2473mm

## Bedroom 1 (Max.)

17' 4" x 10' 2"

5275mm x 3110mm

## Bedroom 2 (Max.)

17' 0" x 10' 1"

4895mm x 3092mm

## Shower Room (Max.)

7' 1" x 7' 4"

2147mm x 2247mm

## WC (Max.)

3' 5" x 6' 11"

1050mm x 2100mm

## Balcony



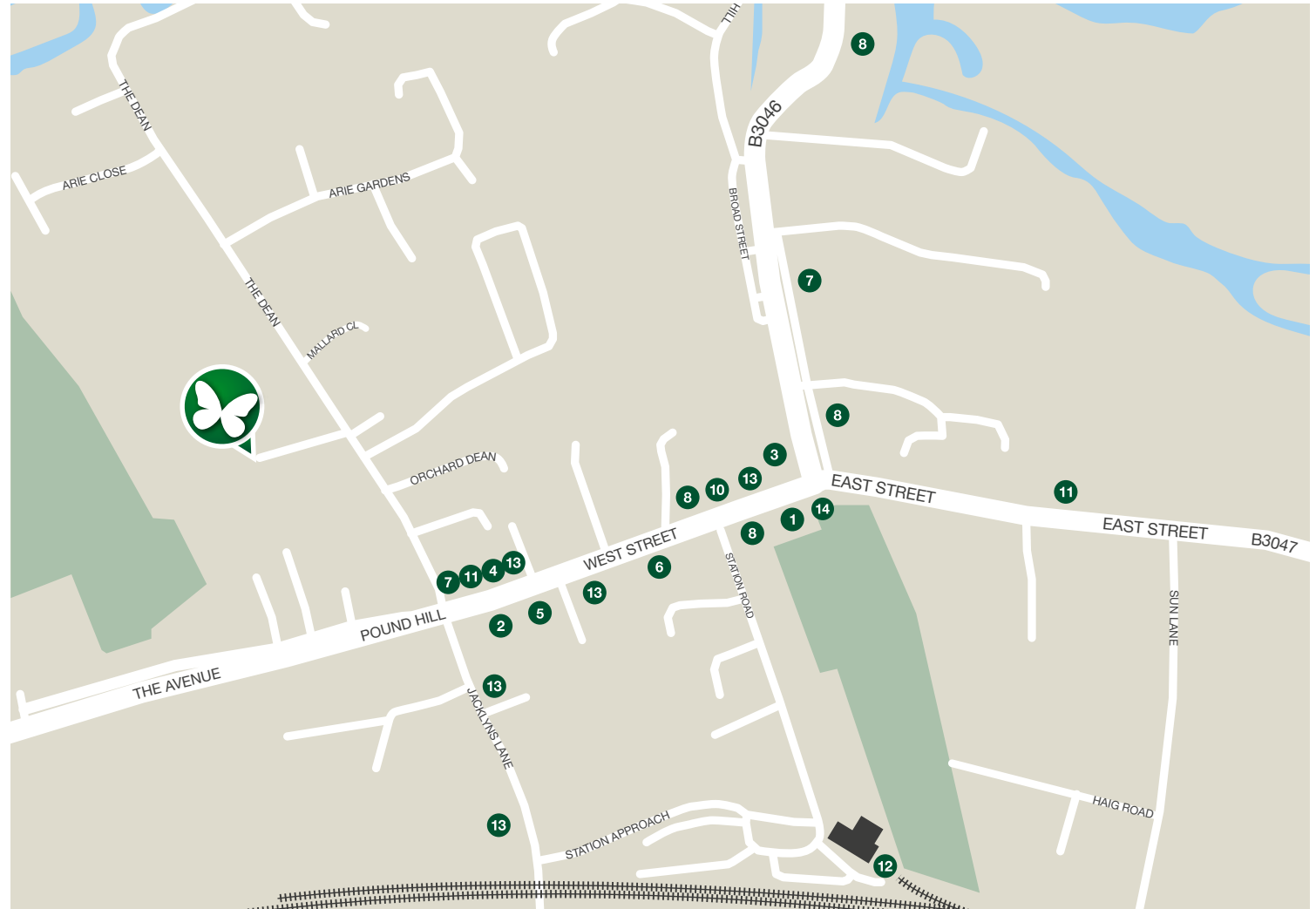
# Wayfarer Place, The Dean, Alresford, Hampshire SO24 9FT

## Getting out and about couldn't be easier

You are in a great location in Alresford with so many amenities and local transport close by. You can leave those everyday worries behind and simply enjoy life in this convenient location.

### Site location and local amenities

- 1 Bank
- 2 Supermarket
- 3 Pharmacy
- 4 Cafe
- 5 Post Office
- 6 Take away
- 7 Restaurant
- 8 Public House
- 9 Clothes Shop
- 10 Gift Shop
- 11 Hairdresser
- 12 Watercress Railway Line
- 13 Bus Stop
- 14 Community Centre





## From Guildford to Winchester

**Start:** 169 High Street, Guildford GU1, UK

Head northwest on North Street/A320 toward Chertsey Street

Turn right onto Chertsey St/A320

Continue to follow A320

Turn left onto York Road/A246

At the roundabout, take the 1st exit onto Onslow Street/A322

Continue straight to stay on Onslow Street/A322

Continue straight to stay on Onslow Street/A322

Continue to follow A322

Turn left onto Farnham Road/A31

Continue to follow A31

Slight left toward Farnham By-Pass/A31

At the roundabout, take the 1st exit onto Farnham By-Pass/A31

At the roundabout, take the 2nd exit onto Alton Rd/A31

Continue to follow A31

At the roundabout, take the 1st exit and stay on A31

At the roundabout, take the 3rd exit and stay on A31

At the roundabout, take the 3rd exit onto Bishops Sutton Road/B3047

Continue to follow B3047

Turn right onto The Dean

Wayfarer Place is on the left

**Arrive:** Wayfarer Place, The Dean, Alresford SO24 9FT

## From Southampton to Alresford

**Start:** Western Esplanade, Southampton SO15 1QJ, UK

Head east toward Western Esplanade/A3024

Turn left onto Western Esplanade/A3024

Continue to follow A3024

Continue straight onto Cumberland Place/A3024

Turn left onto London Road

Parts of this road may be closed at certain times or days

Turn left onto The Avenue/A33

Continue to follow A33

At the roundabout, take the 3rd exit onto Bassett Avenue/A33

At the roundabout, take the 1st exit onto A27 heading to London/Eastleigh/  
Winchester/Romsey/Chilworth/North. Baddesley

Take the M3 ramp on the right to London/Eastleigh/Winchester

Continue onto M3

At junction 10, take the A31/B3330 exit to Winchester/City Centre/Alton

At the roundabout, take the 3rd exit onto A31

At the roundabout, take the 2nd exit onto Petersfield Road/A31

At the roundabout, take the 3rd exit onto Alresford Road/A31

At the roundabout, take the 1st exit onto Alresford Road/B3047

Continue to follow B3047

Turn left onto The Dean

Wayfarer Place is on the left

**Arrive:** Wayfarer Place, The Dean, Alresford SO24 9FT

Please call us free on 0800 201 4106 and we'll help you find your perfect apartment or visit [mccarthyandstone.co.uk/Wayfarer-place](http://mccarthyandstone.co.uk/Wayfarer-place)



All internal images show typical interiors and purchasers are advised that the furniture, fixtures and fittings are for visual representation only and do not depict the actual finish of any individual apartment. No responsibility can be accepted for any mis-statement in this brochure, which is not a contract nor forms any part of any contract. The company also reserves the right to alter specification without notice. Age restrictions apply on all retirement developments. If there are any important matters which are likely to affect your decision to buy, please contact the Sales Executive before travelling to view. Details correct at time of print. A development by McCarthy & Stone Retirement Lifestyles Limited. Please write to us at: Customer Communications, McCarthy & Stone, 4th Floor, 100 Holdenhurst Road, Bournemouth, Dorset BH8 8AQ or email us at: [comments@mccarthyandstone.co.uk](mailto:comments@mccarthyandstone.co.uk).

**CONSUMER  
CODE FOR  
HOME BUILDERS**

[www.consumercode.co.uk](http://www.consumercode.co.uk)