



A well appointed one bedroom RETIREMENT apartment situated on the second floor with a westerly aspect overlooking the beautiful communal gardens. The accommodation comprises: one bedroom with a built in mirrored wardrobe, large lounge with double doors leading to the fitted kitchen which has a window, a built in cooker, hob and hood with space for a freestanding fridge / freezer. The bathroom has a white suite with a shower cubicle.

Hartford Court offers all the benefits of retirement living including communal lounge

£875.00<sub>pcm</sub>

Council Tax Band: B

Local Authority: Scarborough

Hartford Court, Scarborough YO11 2TP

[www.myfutureliving.co.uk](http://www.myfutureliving.co.uk) | 01823 793420 | [lettings@myfutureliving.co.uk](mailto:lettings@myfutureliving.co.uk)

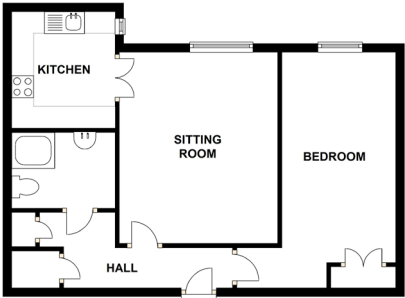






- \*\*\*Minimum age 55\*\*\*
- Long term security with an assured tenancy
- 24 hour Emergency Call system
- Guest suite for visiting friends and family
- On-site Manager
- Lifts to all floors
- Communal lounge for socialising and

MID FLOOR



Energy Efficiency Rating		
	Current	Potential
Very energy efficient - lower running costs		
92-100 <b>A</b>		
81-91 <b>B</b>	85	86
69-80 <b>C</b>		
55-68 <b>D</b>		