



A one bedroom over 60s RETIREMENT apartment situated on the first floor with an easterly aspect overlooking the river and surrounding area. The accommodation comprises: one bedroom with a built-in wardrobe, a bright living room with dual windows and an archway leading into the fitted kitchen which offers space for a freestanding cooker and fridge/freezer. The bathroom features a white suite and electric shower over the bath.

Homecastle House is situated close to centre of this busy town offering good shopping facilities

£875.00_{pcm}

Council Tax Band: A

Local Authority: Sedgemoor

Homecastle House, Bridgwater TA6 3DL

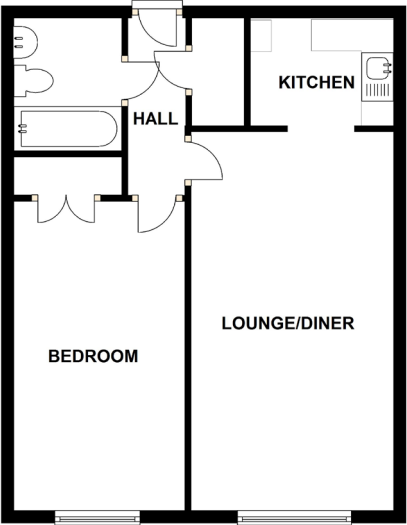
www.myfutureliving.co.uk | 01823 793420 | lettings@myfutureliving.co.uk





- ****RETIREMENT APARTMENT****
- Security of a long term rental contract
- 24 hour Emergency Call system
- On-site Manager
- Maintained and landscaped gardens
- Communal lounge for socialising and relaxing
- Guest suite for visiting friends and family

MID FLOOR



Energy Efficiency Rating		
	Current	Potential
Very energy efficient - lower running costs		
92-100 A		
81-91 B	85	85
69-80 C		
55-68 D		