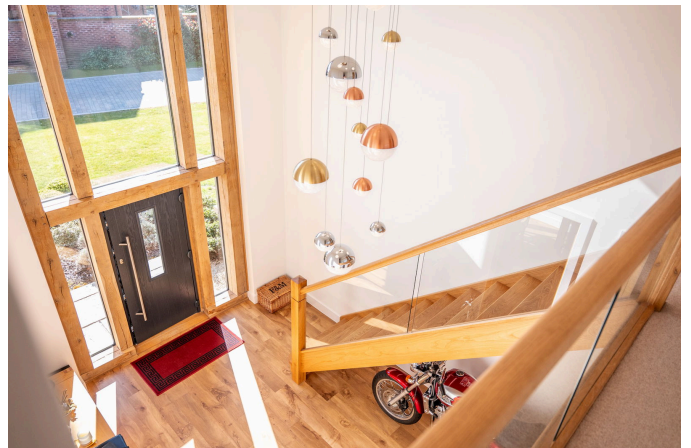


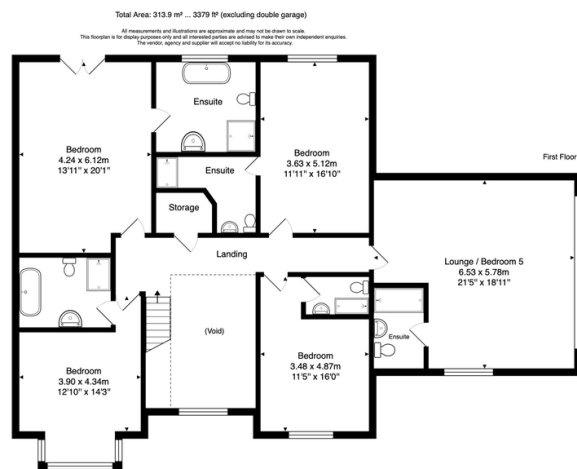
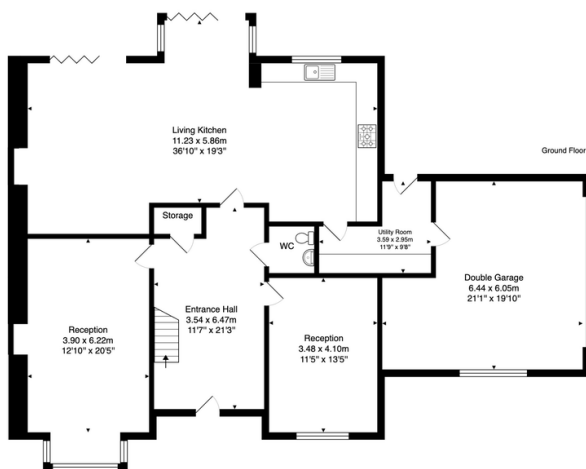
Hornsey Rise, Wellsborough, Nr Market Bosworth

Guide Price £1,200,000

🛏 5 🚗 5 🛋 3



- OPEN DAY 17th May 10am-12pm- Book your time slot now!
- Grand Entrance – Handcrafted oak staircase, glass balustrade, and a striking full-height oak-framed window.
- Smart & Energy-Efficient – Air source heat pump, underfloor heating, ultra-fast fibre broadband, and CAT6 wiring.
- Versatile First-Floor Lounge – Stunning dual-aspect windows, ideal as a sitting room, hobby space, or guest suite (Bed
- Open-Plan Living Kitchen – Bespoke kitchen with granite worktops, Aga, Siemens ovens, wine cooler, breakfast island and bi-fold doors to patio.
- Expansive Living Space: Approx. 3,300 sq. ft. of luxurious living, including five large bedroom
- Beautiful Outdoor Spaces – Landscaped gardens, full-width terrace, double garage, and EV charging point.
- Five Luxury Bathrooms – High-end stylish en-suites with premium fittings.
- Luxury Bedroom Suites – Master with Juliet balcony and en-suite, plus four further spacious double bedrooms.
- Elegant Living Spaces – Formal lounge with wood-burning stove, separate dining room, and practical cloakroom.



OPEN DAY- Saturday 17th May from 10am-12pm. Book your exclusive time slot now!

This exquisite five-bedroom, five-en-suite luxury home, set within the prestigious Hornsey Rise development, offers 3,300 sq. ft. of living space. Blending traditional craftsmanship with modern elegance, it features exceptional finishes, beautifully designed outdoor spaces perfect for entertaining, and exclusive access for residents to a private three-acre bluebell wood, offering the best of contemporary rural living.