



QUARRY PLACE

A collection of apartments and houses
in the historic town of Ludlow



LUDLOW

A thriving and popular Shropshire town, with medieval markets, a historic castle and bustling restaurants. Renowned for its history, there are regular events, markets and festivals to be celebrated throughout the year.

The 11th Century Castle is located on a cliff above the River Teme.

A fabulous tourist attraction or a popular place to enjoy the countryside views on a weekend stroll. Locals can also enjoy Ludlow's finest eateries and shops, including the award-winning Ludlow Farm Shop, located on the outskirts of the town centre. The train station is in the town centre next door to Ludlow Brewery where you can sample some of Ludlow's finest ales.

Ludlow is a welcoming town for families with children, offering a wide selection of colleges, primary and senior schools, nurseries and play groups.



THE HOMES

A collection of 78 houses and apartments on Fishmore Road, including one and two-bedroom apartments and two and three-bedroom houses. Each home has parking and many have gardens.



INCLUDED IN EACH HOME...

- NHBC 10-year Buildmark warranty
- Gas central heating
- UPVC windows
- Choice of kitchen units with laminate worktops *
- Oven and hob
- Contemporary white bathrooms
- Choice of wall tiles *
- Fibre ready [FTTP]

* At relevant stage

^ as specified for individual plots and house types – ask Sales Advisor for full details.

TENURE AND SERVICE CHARGES

Houses will be sold freehold.

An annual service charge will be levied to maintain communal open spaces and parking areas.

Apartments will be sold on the basis of a 199 year lease.

No ground rent will be payable. An annual service charge will be levied to cover insurance, maintenance and cleaning of communal parts of the building and communal open spaces and car parks.

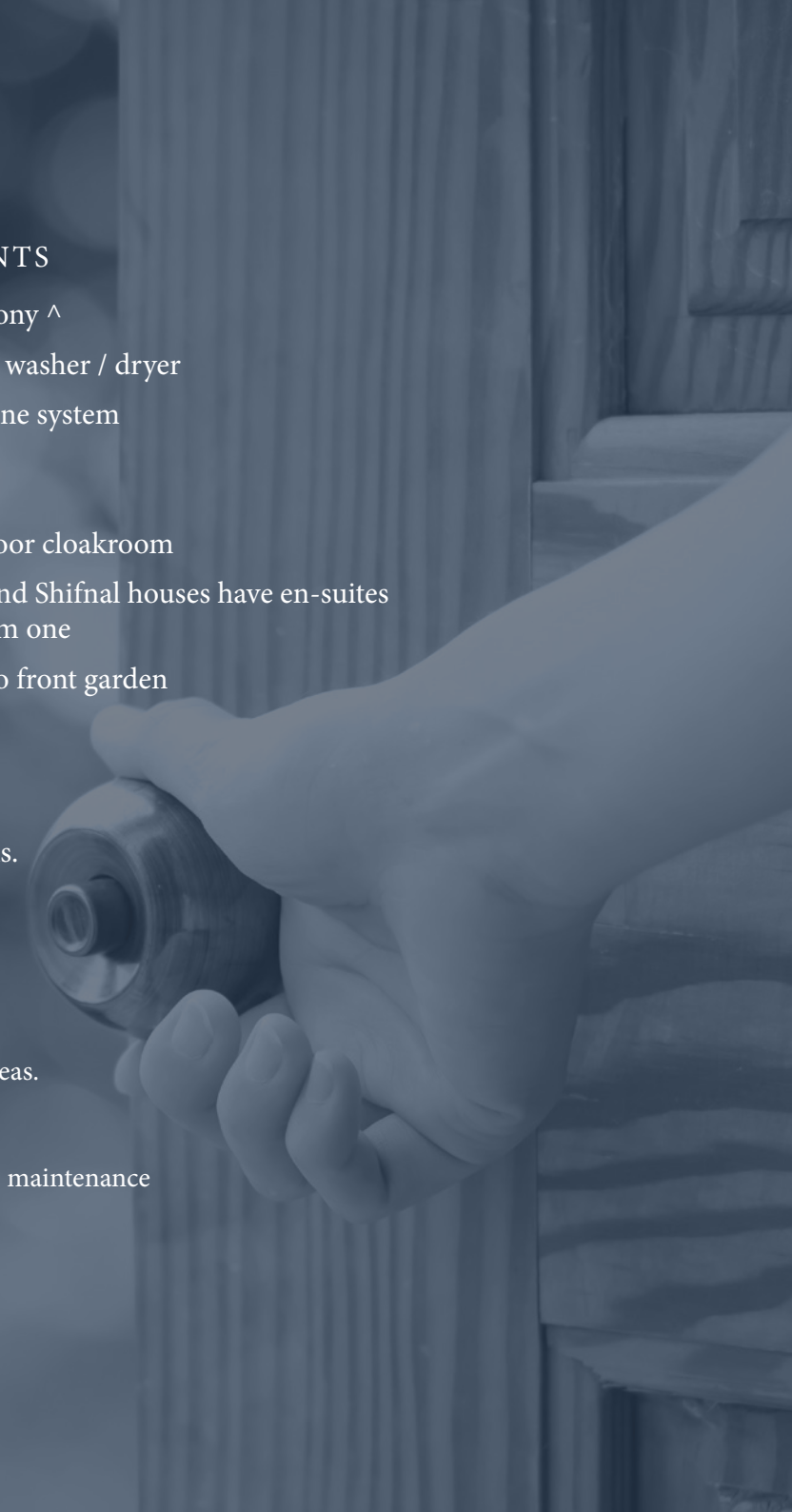
Details of service charges can be obtained from the Sales Advisor.

APARTMENTS

- Juliet balcony ^
- Integrated washer / dryer
- Entry-phone system

HOUSES

- Ground floor cloakroom
- Arundel and Shifnal houses have en-suites to bedroom one
- Turf laid to front garden



THE DEVELOPMENT

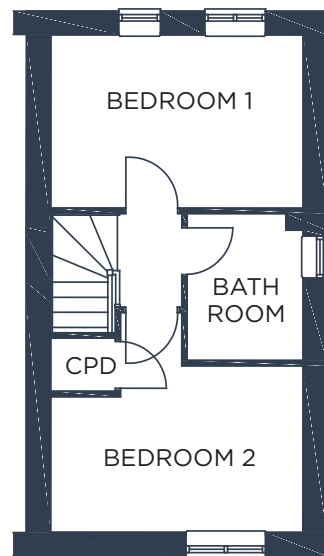
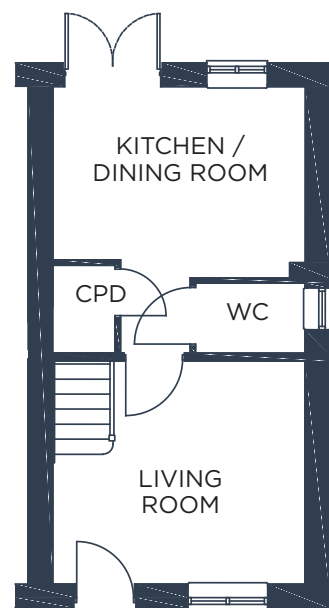
KEY

- Belgrave
- Grange
- Berwick
- Arundel
- Shifnal
- Kiln Court
- Glove Court
- Teme Court
- Corve Court



LOCATION
LOCATION
LOCATION

BELGRAVE



GROUND FLOOR

Living Room
12'6 x 11' - 3800 x 3355

Kitchen/Dining Room
12'6 x 9'5 - 3800 x 2875

FIRST FLOOR

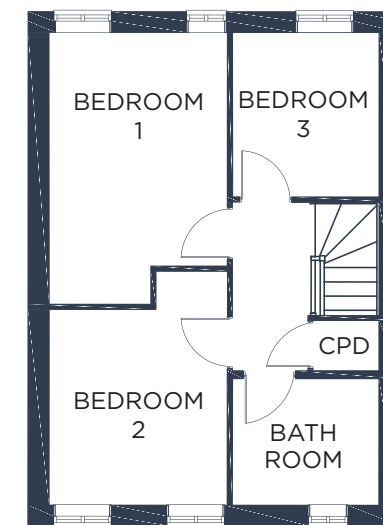
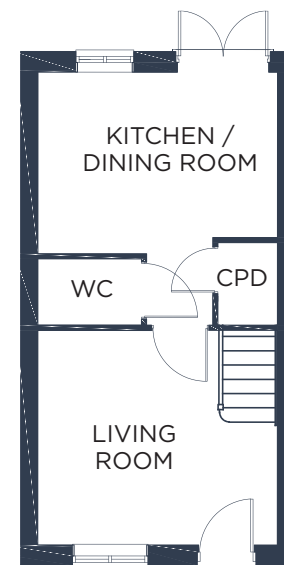
Bedroom 1
12'6 x 8'7 - 3795 x 2605

Bedroom 2
12'6 x 8'3 - 3795 x 2505

Appealing two-bedroom semi-detached and end-terrace homes with patio doors leading from the modern kitchen/dining room into the rear garden.

This pretty home includes a downstairs WC and a spacious master bedroom.

GRANGE



GROUND FLOOR

Kitchen/Dining
12'6 x 9'5 - 3800 x 2880

Living Room
12'6 x 11'2 - 3800 x 3398

FIRST FLOOR

Bedroom 1
14'2 x 9'3 - 4308 x 2827

Bedroom 2
10'2 x 9'3 - 3100 x 2825

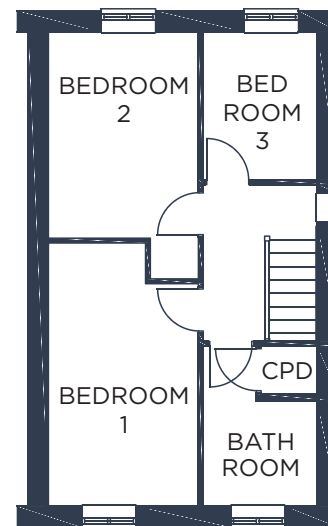
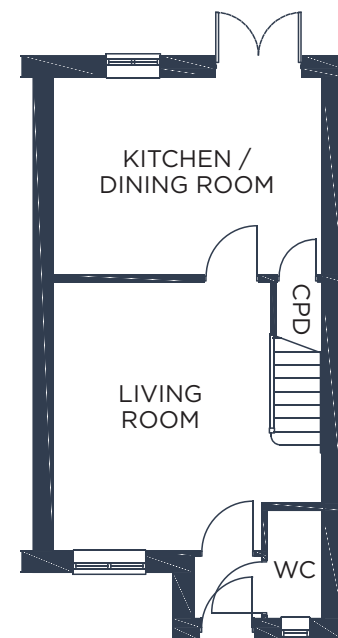
Bedroom 3
8'7 x 7'8 - 2610 x 2323

The Grange is a low-maintenance, three-bedroom house ideal for a young family.

On the ground floor there is an open-plan kitchen/dining room and separate living room.

Bedroom one is especially spacious and bedroom three can be used as a study.

BERWICK



GROUND FLOOR

Living Room
14'9 x 12' - 4505 x 3645

Kitchen/Dining Room
14'9 x 10'10 - 4500 x 3310

FIRST FLOOR

Bedroom 1
14'6 x 8'3 - 4405 x 2510

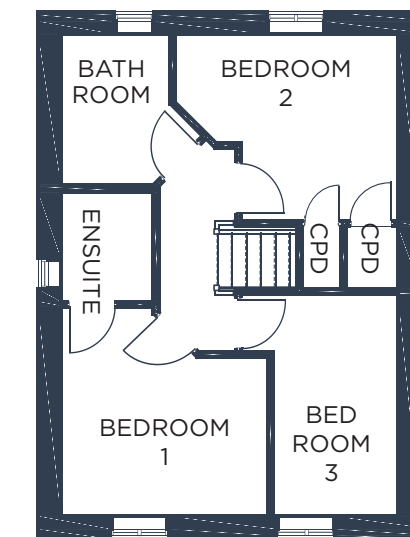
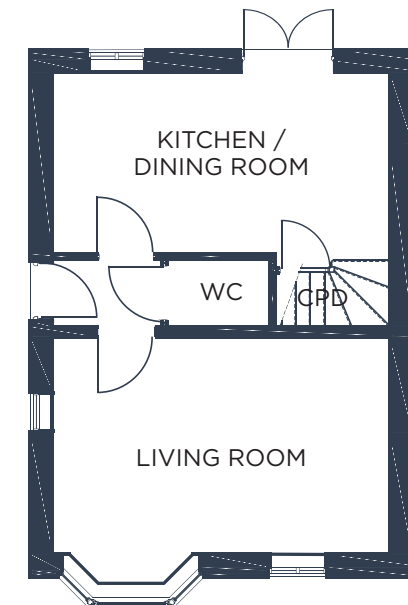
Bedroom 2
11'4 x 8'3 - 3450 x 2510

Bedroom 3
8'2 x 6'3 - 2475 x 1910

Attractive semi-detached and end-terrace homes, offering a large kitchen/dining room with patio doors leading to garden.

Three good-sized bedrooms offer practicality and versatility to the upstairs space.

ARUNDEL



GROUND FLOOR

Living Room
17'2 x 11'1 - 5240 x 3385

Kitchen/Dining Room
17'2 x 9'3 - 5240 x 2825

FIRST FLOOR

Bedroom 1
10'8 x 10'7 - 3255 x 3223

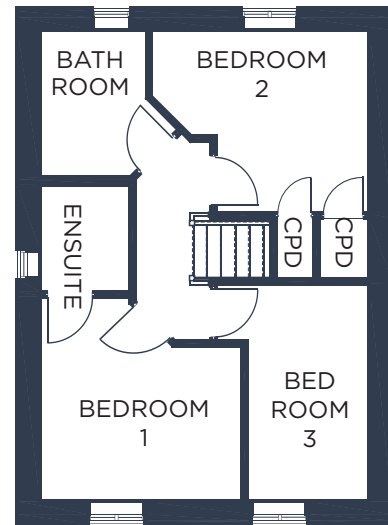
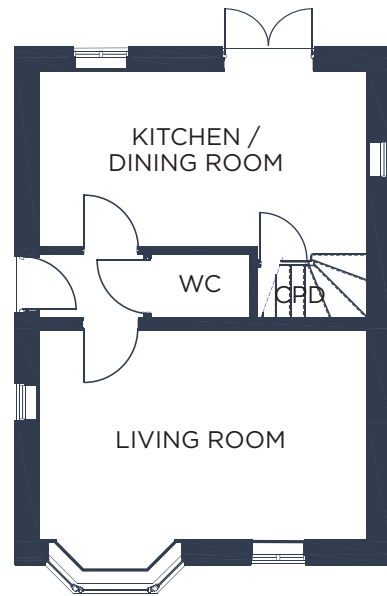
Bedroom 2
11'4 x 9'6 - 3460 x 2905

Bedroom 3
11'4 x 6'4 - 3455 x 1937

This three-bedroom, semi-detached home includes a large living room with a pretty bay window. The kitchen/dining room has double doors leading to the rear garden.

The spacious master bedroom benefits from an en-suite shower room.

ARUNDEL (DETACHED)



The detached variation of the Arundel is a three-bedroom house featuring a spacious, open-plan kitchen/dining room with patio doors leading to the rear garden.

Upstairs, there are three good-sized bedrooms with en-suite to the master bedroom.

GROUND FLOOR

Living Room
17'2 x 11'1 – 5240 x 3385

Kitchen/Dining Room
17'2 x 9'3 – 5240 x 2825

FIRST FLOOR

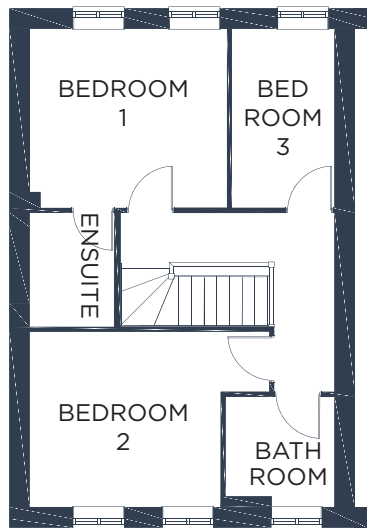
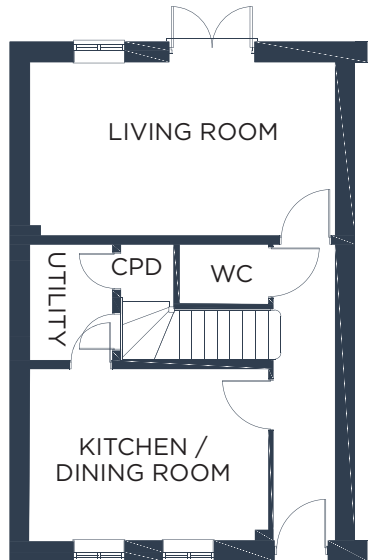
Bedroom 1
10'8 x 10'7 – 3255 x 3223

Bedroom 2
11'4 x 9'6 – 3460 x 2905

Bedroom 3
11'4 x 6'4 – 3455 x 1937



SHIFNAL



GROUND FLOOR

Living Room
17'7 x 10' – 5353 x 3045

Kitchen/Dining Room
13'9 x 9'11 – 4200 x 3026

FIRST FLOOR

Bedroom 1
11'5 x 10'4 – 3467 x 3147

Bedroom 2
11' x 10'2 – 3355 x 3085

Bedroom 3
10'4 x 5'11 – 3147 x 1803

A lovely, three-bedroom, semi-detached house comprising a large living room with patio doors leading to the rear garden. The kitchen/dining room is to the front of the house with access to the utility.

The spacious master bedroom includes an en-suite.



The stylish and contemporary Quarry Place apartments are designed with modern lifestyles in mind.

CGI elevation Corve Court



FOR EASY LIVING

Looking for a secure, low-maintenance home without compromising on style, comfort or location?

The apartments at Quarry Place offer you:

- Contemporary spaces designed with modern lifestyles in mind... Many apartments have bright, open-plan living spaces, perfect for creating an inviting home that works for you.
- Privacy and security... Entry phone system from the external access improves security and offers reassurance, especially for those who regularly spend time away from home.
- Peace of mind... with a service agreement covering external maintenance, there is no need to worry about painting, repairs, paths or communal gardens.
- Efficient energy costs... Quarry Place apartments meet the latest building regulations criteria for energy efficiency, keeping costs and emissions to a minimum.
- Low council tax... Apartments often benefit from lower council tax costs than larger dwellings such as houses, great news for those looking to downsize.
- Parking... All apartments at Quarry Place include allocated parking spaces conveniently located near to the entrance.
- Leisure... Minimal housework and maintenance leaves even more time to enjoy the leisure, social and cultural amenities that Ludlow has to offer.



The convenience offered by the Quarry Place apartments makes them the perfect investment or lock-up-and-go property.

KILN COURT

Two-bedroom apartments with open plan kitchen/dining room. All have a spacious master bedroom and some have a Juliet balcony.



GROUND FLOOR



FIRST FLOOR



GROUND FLOOR

PLOT 7	Kitchen/living/dining	21'6" x 15'5"	-	6548	x	4707
	Bedroom 1	11'6" x 10'5"	-	3505	x	3177
	Bedroom 2	12'8" x 8'7"	-	3868	x	2615
PLOT 8	Kitchen/living/dining	21'6" x 15'	-	6541	x	4557
	Bedroom 1	10'10" x 10'5"	-	3300	x	3170
	Bedroom 2	12'9" x 8'7"	-	3880	x	2615
PLOT 9	Kitchen/living/dining	21'5" x 11'8"	-	6520	x	3545
	Bedroom 1	12'5" x 10'6"	-	3780	x	3195
	Bedroom 2	11'2" x 8'7"	-	3402	x	2615

FIRST FLOOR

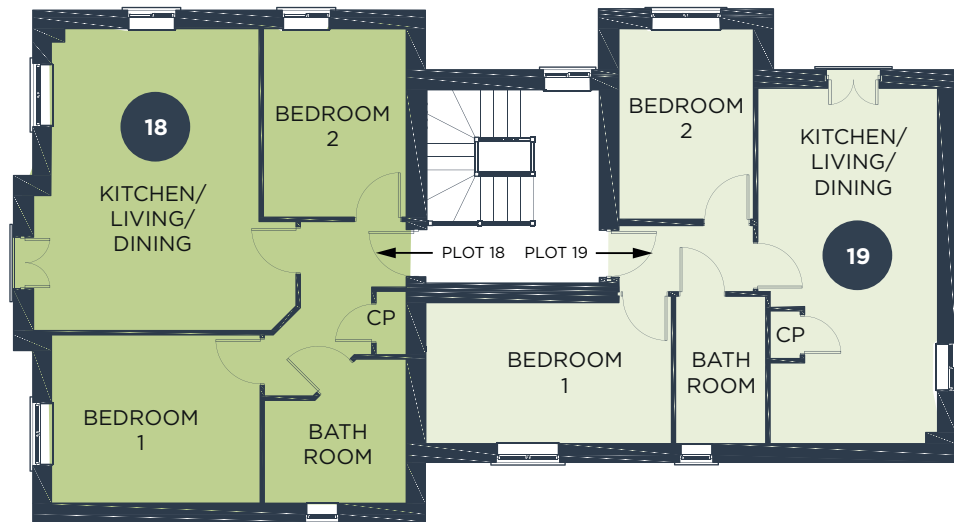
PLOT 10	Kitchen/living/dining	17'10" x 15'11"	-	5420	x	4840
	Bedroom 1	16'3" x 8'2"	-	4943	x	2497
	Bedroom 2	17'10" x 10'	-	5420	x	3044
PLOT 11	Kitchen/living/dining	21'6" x 15'	-	6541	x	4557
	Bedroom 1	10'10" x 10'5"	-	3300	x	3170
	Bedroom 2	12'8" x 8'7"	-	3868	x	2615
PLOT 12	Kitchen/living/dining	21'5" x 11'8"	-	6520	x	3565
	Bedroom 1	12'5" x 10'6"	-	3780	x	3195
	Bedroom 2	11'2" x 8'7"	-	3402	x	2615

GLOVE COURT

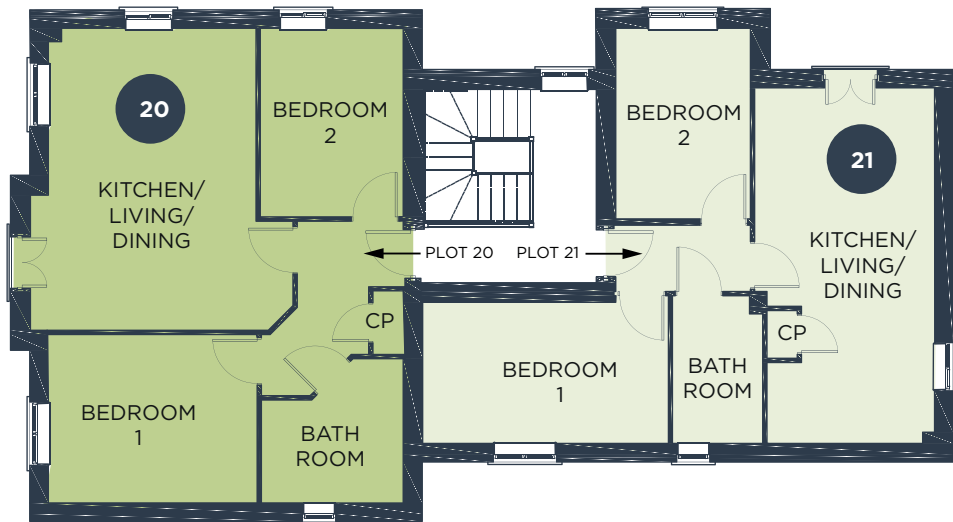
Two-bedroom apartments with open plan kitchen/dining room. All have a spacious master bedroom and many have a Juliet balcony.



GROUND FLOOR



FIRST FLOOR



SECOND FLOOR

GROUND FLOOR

PLOT 16 Kitchen/living/dining	18'9" x 12'11"	- 5703 x 3925
Bedroom 1	12'11" x 10'5"	- 3945 x 3182
Bedroom 2	11'8" x 8'10"	- 3561 x 2699
PLOT 17 Kitchen/living/dining	22'1" x 11'2"	- 6715 x 3398
Bedroom 1	15'3" x 8'9"	- 4641 x 2664
Bedroom 2	11'10" x 8'4"	- 3600 x 2543

FIRST FLOOR

PLOT 18 Kitchen/living/dining	18'9" x 12'11"	- 5703 x 3925
Bedroom 1	12'11" x 10'5"	- 3945 x 3182
Bedroom 2	11'8" x 8'10"	- 3651 x 2699
PLOT 19 Kitchen/living/dining	22'1" x 11'2"	- 6715 x 3397
Bedroom 1	15'3" x 8'9"	- 4641 x 2664
Bedroom 2	11'10" x 8'4"	- 3600 x 2543

SECOND FLOOR

PLOT 20 Kitchen/living/dining	18'9" x 12'11"	- 5703 x 3925
Bedroom 1	12'11" x 10'5"	- 3945 x 3182
Bedroom 2	11'8" x 8'10"	- 3561 x 2699
PLOT 21 Kitchen/living/dining	22'1" x 11'2"	- 6715 x 3398
Bedroom 1	15'3" x 8'9"	- 4641 x 2664
Bedroom 2	11'10" x 8'4"	- 3600 x 2543

TEME COURT

One and two-bedroom apartments with open plan kitchen/dining room. All have a spacious master bedroom and some have a Juliet balcony or patio doors to the ground floor.



GROUND FLOOR



FIRST FLOOR



SECOND FLOOR

GROUND FLOOR

PLOT 76	Kitchen/living/dining	22'5	x	12'3	-	6828	x	3725
	Bedroom	11'	x	9'11	-	3350	x	3015
PLOT 56	Kitchen/living/dining	22'5	x	13'3	-	6817	x	4043
	Bedroom 1	11'6	x	10'5	-	3493	x	3170
	Bedroom 2	12'4	x	8'7	-	3749	x	2615
PLOT 57	Kitchen/living/dining	22'5	x	12'6	-	6827	x	3795
	Bedroom 1	12'2	x	8'7	-	3704	x	2615
	Bedroom 2	10'6	x	9'7	-	3195	x	2927

FIRST FLOOR

PLOT 77	Kitchen/living/dining	22'5	x	12'3	-	6828	x	3725
	Bedroom	11'	x	9'11	-	3350	x	3015
PLOT 58	Kitchen/living/dining	22'5	x	13'3	-	6817	x	4043
	Bedroom 1	11'6	x	10'5	-	3493	x	3170
	Bedroom 2	12'4	x	8'7	-	3749	x	2615
PLOT 59	Kitchen/living/dining	22'5	x	12'6	-	6827	x	3795
	Bedroom 1	12'2	x	8'7	-	3704	x	2615
	Bedroom 2	10'6	x	9'7	-	3195	x	2927

SECOND FLOOR

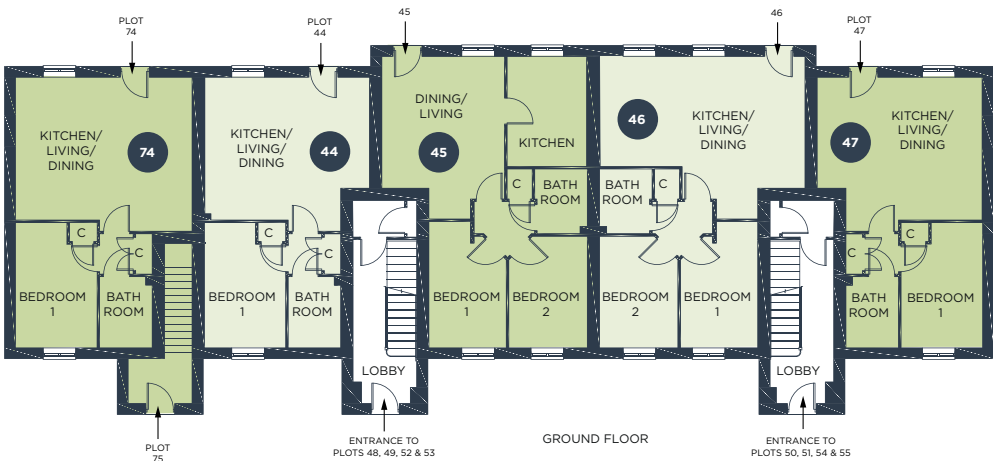
PLOT 78	Kitchen/living/dining	22'5	x	12'3	-	6828	x	3725
	Bedroom	11'	x	9'11	-	3350	x	3015
PLOT 60	Kitchen/living/dining	22'5	x	13'3	-	6817	x	4043
	Bedroom 1	11'6	x	10'5	-	3493	x	3170
	Bedroom 2	12'4	x	8'7	-	3749	x	2615
PLOT 61	Kitchen/living/dining	22'5	x	12'6	-	6827	x	3795
	Bedroom 1	12'2	x	8'7	-	3704	x	2615
	Bedroom 2	10'6	x	9'7	-	3195	x	2927

CORVE COURT

One and two-bedroom apartments with open plan kitchen/dining room. All have a spacious master bedroom and many have a Juliet balcony. Some ground floor apartments have individual private entrances.



FIRST FLOOR



GROUND FLOOR



SECOND FLOOR

GROUND FLOOR

PLOT 74	Kitchen/living/dining	18'10 x 16'5	-	5740 x 5003
	Bedroom	13'4 x 8'8	-	4073 x 2645
PLOT 44	Kitchen/living/dining	17'7 x 15'3	-	5352 x 4638
	Bedroom	13'4 x 8'8	-	4073 x 2645
PLOT 45	Kitchen	11'9 x 8'6	-	3578 x 2585
	Living/dining	15'3 x 13'1	-	4633 x 3990
	Bedroom 1	11'11 x 8'3	-	3628 x 2513
	Bedroom 2	11'11 x 8'4	-	3628 x 2547
PLOT 46	Kitchen/living/dining	21'11 x 14'1	-	6670 x 4283
	Bedroom 1	11'11 x 8'3	-	3628 x 2513
	Bedroom 2	11'11 x 8'4	-	3628 x 2548
PLOT 47	Kitchen/living/dining	17'7 x 15'3	-	5352 x 4638
	Bedroom	13'4 x 8'8	-	4073 x 2645

FIRST FLOOR

PLOT 75	Kitchen/living/dining	18'10 x 16'5	-	5740 x 5003
	Bedroom 1	13'4 x 8'8	-	4073 x 2645
PLOT 48	Kitchen/living/dining	17'7 x 15'3	-	5352 x 4638
	Bedroom 1	13'4 x 8'8	-	4073 x 2645
PLOT 49	Kitchen	11'9 x 8'6	-	3578 x 2585
	Living/dining	15'3 x 13'1	-	4633 x 3990
	Bedroom 1	11'11 x 8'3	-	3628 x 2513
	Bedroom 2	11'11 x 8'4	-	3628 x 2548
PLOT 50	Kitchen/living/dining	21'11 x 14'1	-	6670 x 4283
	Bedroom 1	11'11 x 8'3	-	3628 x 2513
	Bedroom 2	11'11 x 8'4	-	3628 x 2548
PLOT 51	Kitchen/living/dining	17'7 x 15'3	-	5352 x 4638
	Bedroom	13'4 x 8'8	-	4073 x 2645

SECOND FLOOR

PLOT 52	Kitchen/living/dining	17'7 x 15'3	-	5352 x 4638
	Bedroom	13'4 x 8'8	-	4073 x 2645
PLOT 53	Kitchen	11'9 x 8'6	-	3578 x 2585
	Living/dining	15'3 x 13'1	-	4633 x 3990
	Bedroom 1	11'11 x 8'3	-	3628 x 2513
	Bedroom 2	11'11 x 8'4	-	3628 x 2548
PLOT 54	Kitchen/living/dining	21'11 x 14'1	-	6670 x 4283
	Bedroom 1	11'11 x 8'3	-	3628 x 2513
	Bedroom 2	11'11 x 8'4	-	3628 x 2548
PLOT 55	Kitchen/living/dining	17'7 x 15'3	-	5352 x 4638
	Bedroom	13'4 x 8'8	-	4073 x 2645



WHO TO CONTACT

For all enquiries: 01743 761789

Website: www.shropshire-homes.com

Email: sales@shropshire-homes.com

Follow us:



WHERE TO GO

QUARRY PLACE

FISHMORE ROAD

LUDLOW

SY8 2LU



THE DEVELOPER

Shropshire Homes is an award-winning house-builder, which has 40 years of experience developing homes of quality and character in the most desirable locations in and around Shropshire.



HELP TO BUY*

This government backed scheme enables many first-time buyers to benefit from a 20% shared equity loan and purchase a new home with a 5% deposit. Please ask a Sales Advisor to find out about eligibility and qualifying properties.

*subject to status, terms and conditions.

SHROPSHIRE HOMES LTD, THE OLD WORKHOUSE, CROSS HOUSES, SHREWSBURY, SHROPSHIRE SY5 6JH

SHROPSHIRE HOMES LTD BELIEVES THAT THESE DETAILS ARE CORRECT AT THE TIME OF PRINTING. HOWEVER, THEY DO NOT FORM PART OF AN OFFER OR CONTRACT AND MAY BE AMENDED ACCORDING TO PREVAILING CIRCUMSTANCES. ILLUSTRATIONS OF HOUSE TYPES ARE ARTISTS IMPRESSIONS AND DO NOT REPRESENT FINAL DETAIL.

PLEASE NOTE DIMENSIONS ARE USUALLY APPROXIMATE MAXIMUM MEASUREMENTS. THE SPECIFICATION OF EACH HOUSE TYPE WILL VARY. PLEASE ASK OUR SALES ADVISORS FOR FULL DETAILS ON SPECIFIC PLOTS.

INTERNAL IMAGES MAY NOT BE OF ACTUAL PLOT/HOUSE TYPE OR SPECIFICATION – ASK FOR FULL DETAILS.

TYPICAL IMAGES: ELEVATIONS MAY VARY

PRINTED BY BATTLEFIELD PRINTING GROUP LTD
DESIGNED IN-HOUSE



