



5 SWARBOURNE CLOSE

DIDCOT, OX11 7UL

£1,450 PCM

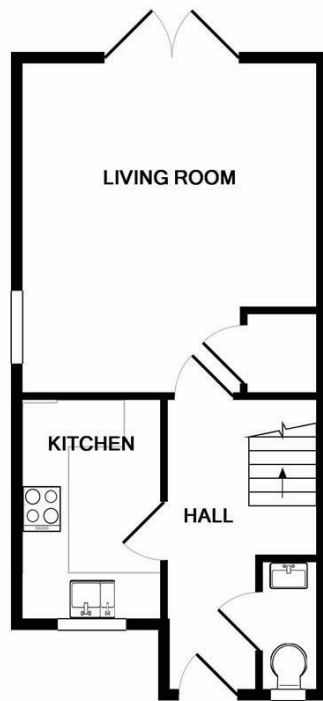
Nestled in the charming area of Swarbourne Close, Didcot, this delightful end-terrace house presents an excellent opportunity for those seeking a comfortable and convenient home. The property features two well-proportioned bedrooms, making it ideal for small families, couples, or individuals.

Upon entering, you will find a welcoming reception room. The layout is both practical and inviting, ensuring that you can make the most of the living space. The house also includes a bathroom, thoughtfully designed to cater to your daily needs.

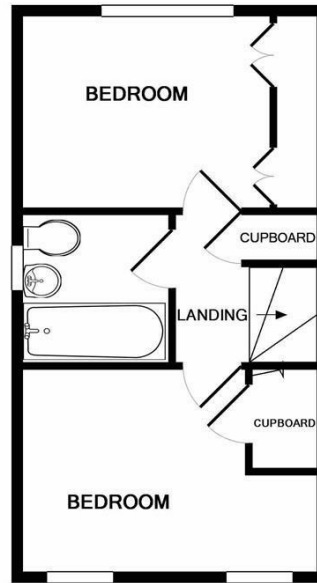
One of the notable advantages of this property is the off street parking, accommodating one vehicle, which is a valuable asset in this area.

William | Jones

Estate Agents

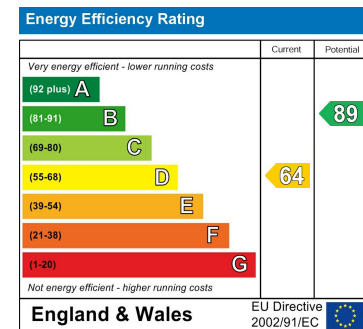


GROUND FLOOR



1ST FLOOR

Whilst every attempt has been made to ensure the accuracy of the floor plan contained here, measurements of doors, windows, rooms and any other items are approximate and no responsibility is taken for any error, omission, or mis-statement. This plan is for illustrative purposes only and should be used as such by any prospective purchaser. The services, systems and appliances shown have not been tested and no guarantee as to their operability or efficiency can be given
Made with Metropix ©2017



Agents Note: Whilst every care has been taken to prepare these particulars, they are for guidance purposes only. All measurements are approximate and are for general guidance purposes only and whilst every care has been taken to ensure their accuracy, they should not be relied upon and potential buyers/tenants are advised to recheck the measurements

Head Office Lettings
210 Broadway
Didcot
Oxfordshire
OX11 8RN

01235 812229
didcot@wjestates.co.uk
www.wjestates.co.uk

William | Jones
Estate Agents