



146B HIGH STREET SUTTON COURTENAY, OX14 4AX

£224,950
SHARE OF FREEHOLD

A stylish two-bedroom maisonette in the heart of Sutton Courtenay, offering bright, spacious living with two generous double bedrooms, a modern bathroom, off-road parking, and access to a lovely communal garden. Set in beautiful Oxfordshire countryside, it's ideally located near Didcot Parkway (trains to London in under 40 mins) and close to Harwell Campus, Milton Park, and Culham Science Centre. The property is part of a shared freehold (25% share), with a monthly fee of £108.29 covering building insurance and maintenance. Planned works this summer include exterior painting and rendering—already agreed and fully funded. Subject to management agreement. Buyers should seek legal advice on ownership during conveyancing.

William | Jones

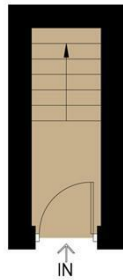
Estate Agents



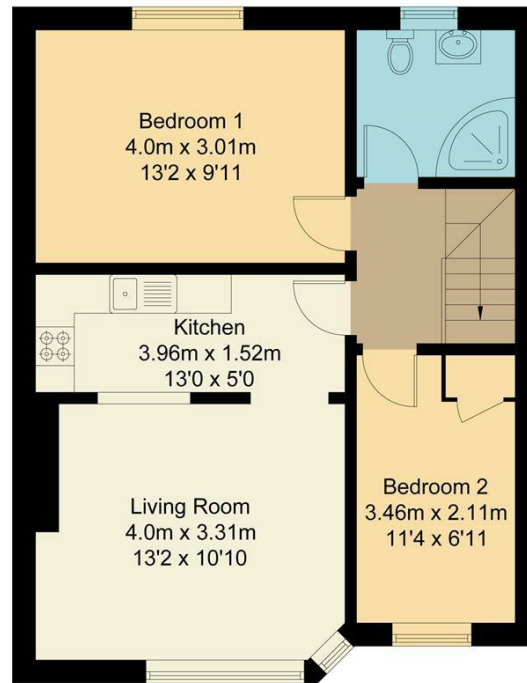
William | Jones

High Street, OX14

Approximate Gross Internal Area = 51.60 sq m / 555 sq ft
For identification only - Not to scale



Ground Floor



First Floor

Floor plan produced in accordance with RICS Property Measurement Standards.
Not to scale, for illustration and layout purposes only.
© Mortimer Photography. Produced for William Jones.
Unauthorised reproduction prohibited

Energy Efficiency Rating		
	Current	Potential
Very energy efficient - lower running costs		
(92 plus) A		
(81-91) B		
(69-80) C		
(55-68) D		
(39-54) E		
(21-38) F		
(1-20) G		
Not energy efficient - higher running costs		
England & Wales	76	78
	EU Directive 2002/91/EC	

Agents Note: Whilst every care has been taken to prepare these particulars, they are for guidance purposes only. All measurements are approximate and are for general guidance purposes only and whilst every care has been taken to ensure their accuracy, they should not be relied upon and potential buyers/tenants are advised to recheck the measurements

Didcot Office Sales
210 Broadway
Didcot
Oxfordshire
OX11 8RN

01235 812229
didcot@wjestates.co.uk
www.wjestates.co.uk

William | Jones

Estate Agents