



Apartment interior design at:
59 Evaggelistrias Str., Piraeus

Chapter: Interior. Working draft.

Interior production
105120, Russia, Moscow, ulitsa Nizhnyaya Syromyatnicheskaya, 10 stroenie 9, etazh 3, ofis 303
+7 (499) 938-99-85

620137, Russia, Yekaterinburg, ulitsa Studencheskaya, 11, etazh 5, ofis 505
+7 (343) 247-37-80




atischler.ru

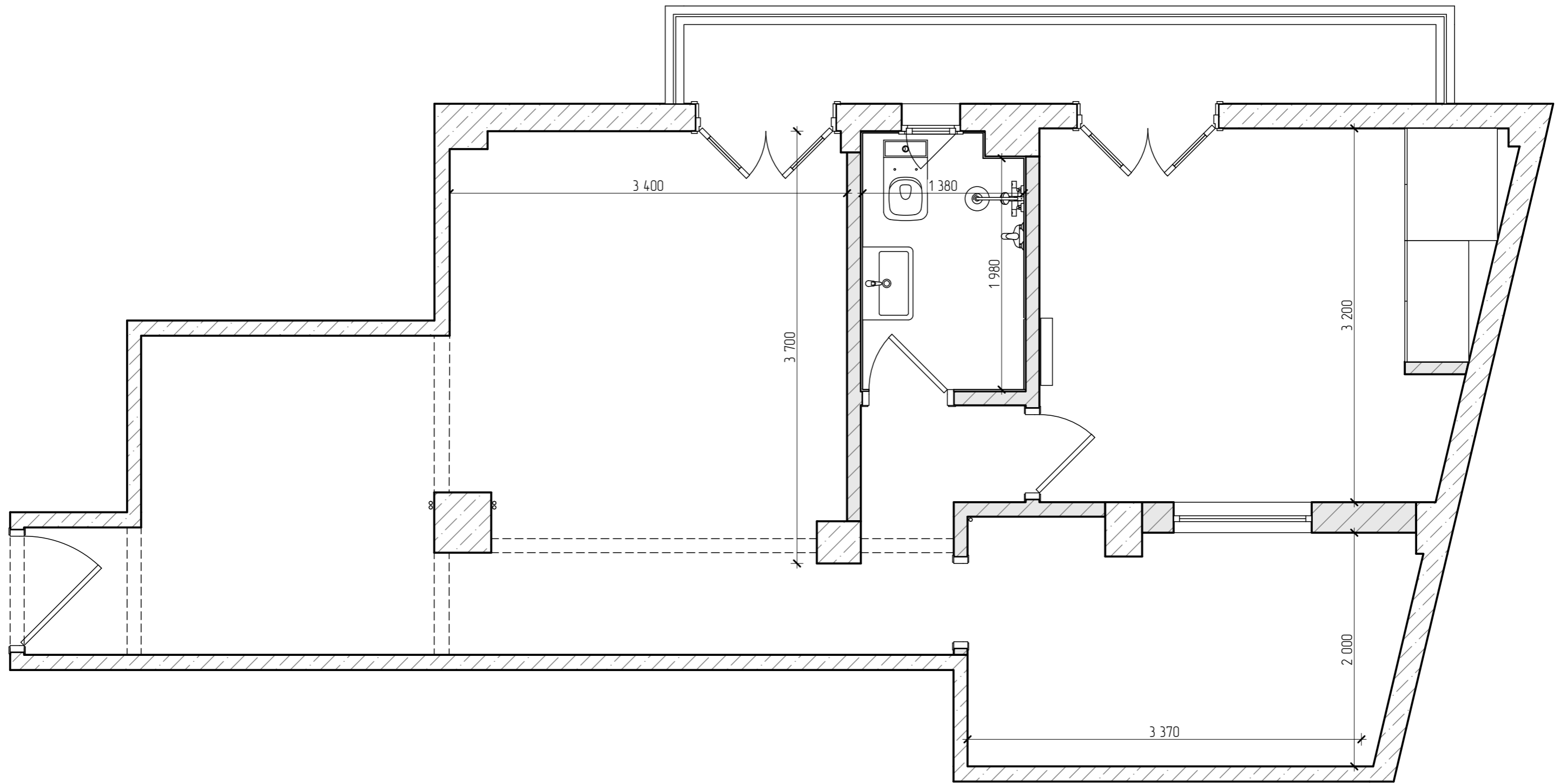
List of working drawings and specifications

| Sheet | Name | Note |
|-------|---|------|
| 1 | Title page | |
| 2 | List of working drawings and specifications 1:1 | |
| 3 | Measurement plan 1:35 | |
| 4 | Dismantling plan 1:35 | |
| 5 | Furniture arrangement plan 1:35; Explication of premises 1:1 | |
| 6 | Sewerage and water plan 1:35 | |
| 7 | Plan for filling openings 1:35; Specification of opening filling elements | |
| 8 | Floor plan 1:35; Floor finish specification 1:1; Skirting board specification 1:1 | |
| 9 | Ceiling plan 1:35; Ceiling finishing specification 1:1 | |
| 10 | Lamp arrangement plan 1:35; Lighting specification 1:1 | |
| 11 | Wall finishings plan 1:35; Wall finishings specification 1:1 | |
| 12 | Sweeps of shower room 1:20; Extract from wall finishings plan 1:35 | |

Information about changes:

Changes XX.XX.2024
1. Sheet №X

| | | | | | | | | | |
|----------------|----------|------------|--------|---|----------|---|---|-------|--------|
| | | | | | | XX-XXXXXX-AM | | | |
| | | | | | | 59 Evagelistrias Str., Piraeus | | | |
| Rev. | Rev. ar. | Sheet | № doc. | Sign. | Date | Interior | Stage | Sheet | Sheets |
| | | | | | | | WP | 2 | 12 |
| Chief designer | | Karapetyan | |  | 16.02.24 | List of working drawings and specifications 1:1 |  | | |
| Designer | | Tsapko | |  | 16.02.24 | | | | |
| Customer | | | | | | | | | |



Notes:

1. All sizes are approximate and will be confirmed after measurements.

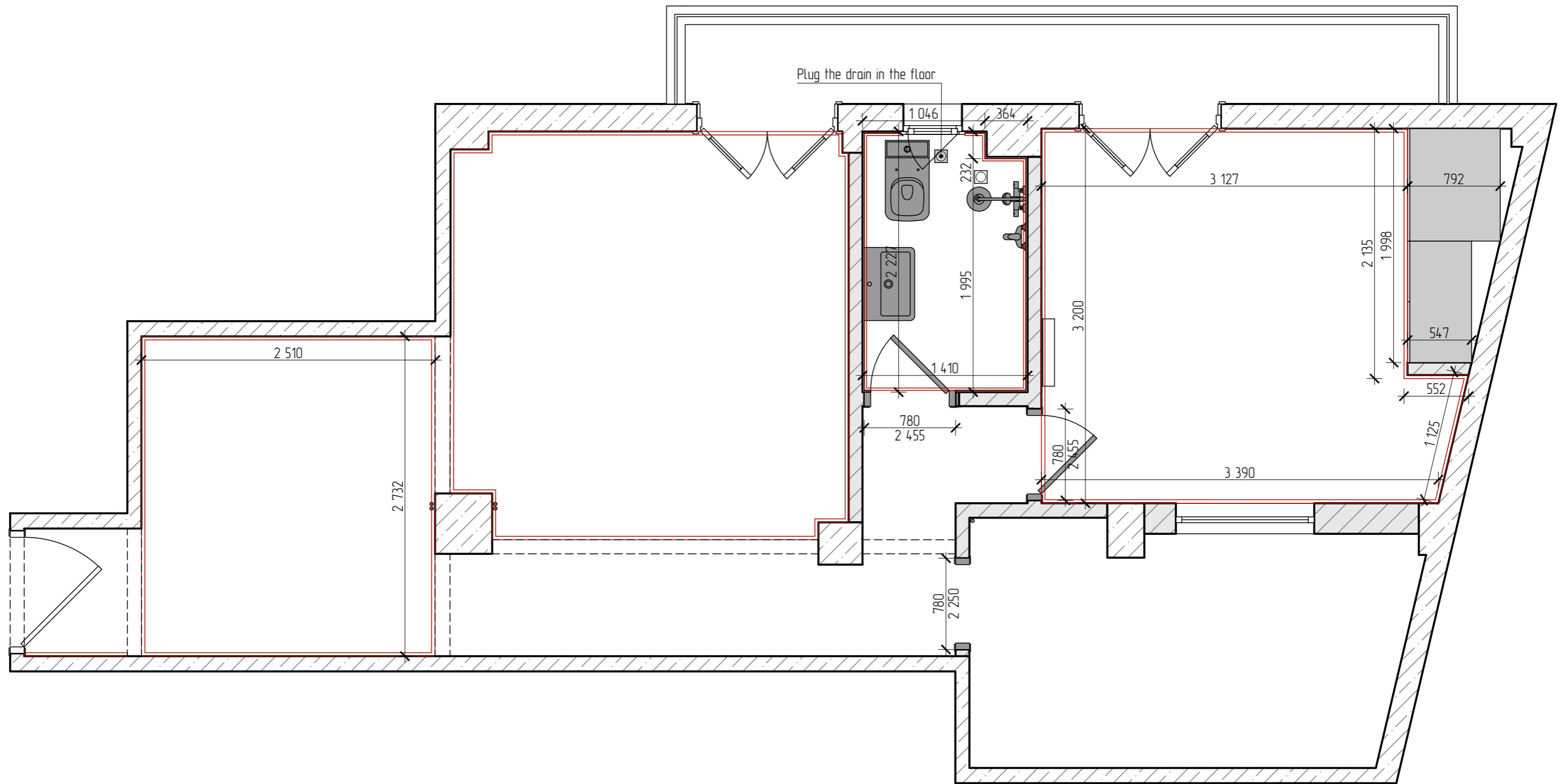
| Rev. | Rev. ar. | Sheet | N° doc | Sign. | Date |
|------|----------|-------|--------|-------|----------|
| | | | | | 16.02.24 |

Measurement plan 1:35

Sheet

3

A3 format



Notes:

1. Remove the existing shower tiles on the walls and floor.
2. Dismantle existing plumbing.
3. Dismantle existing interior doors.
4. Remove existing ceiling plinth.
5. Remove existing flooring and check the possibility of restoring the floor under the existing tiles.
6. Remove existing wardrobe in bedroom.
7. All sizes are approximate and will be confirmed after measurements.
8. Dismantle existing radiator pipes (except for the radiator in the bedroom)

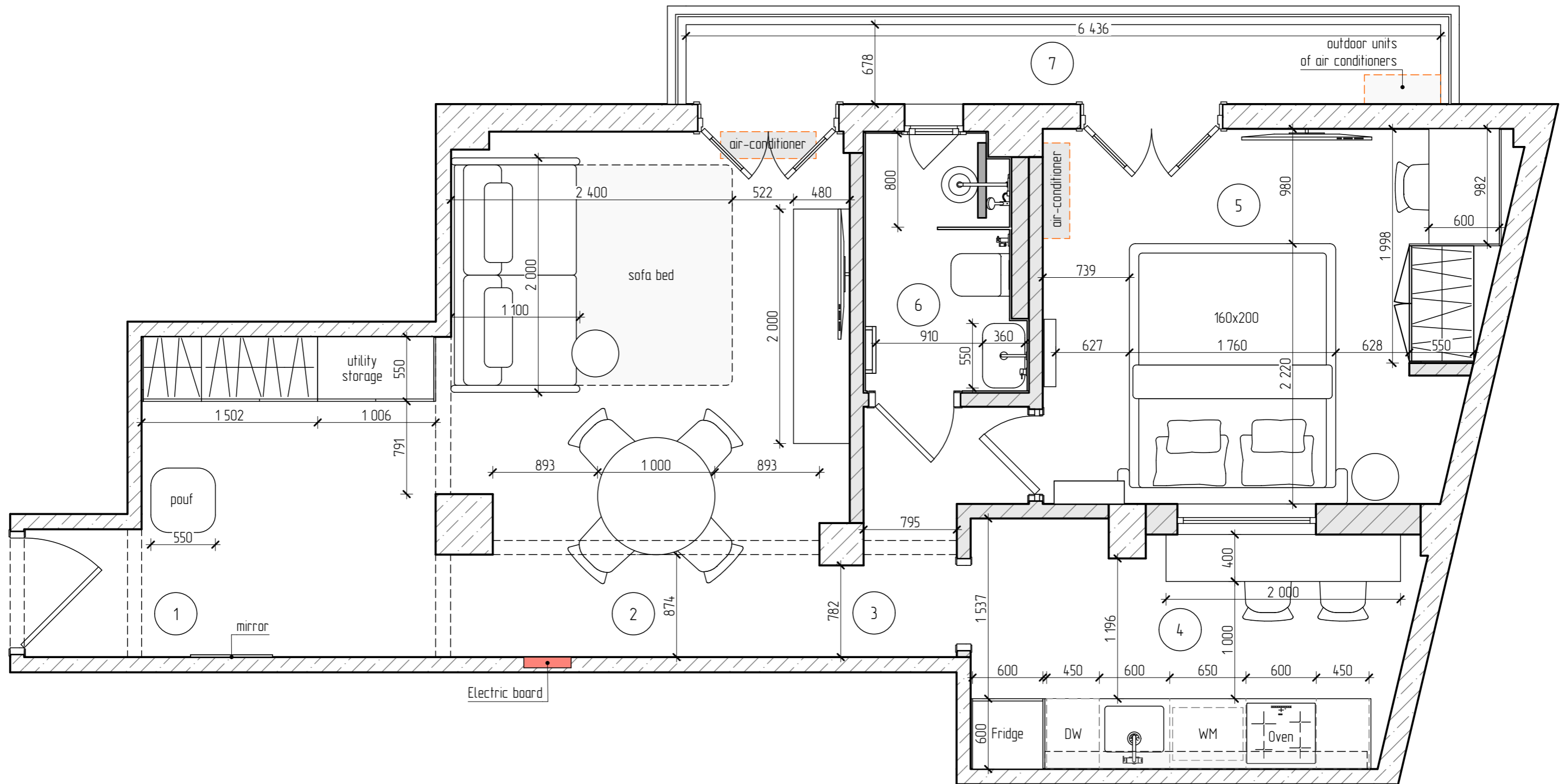
| Rev. | Rev. ar. | Sheet | N° doc. | Sign. | Date |
|------|----------|-------|---------|-------|----------|
| | | | | | 16.02.24 |

Dismantling plan 135

Sheet

4

A3 format

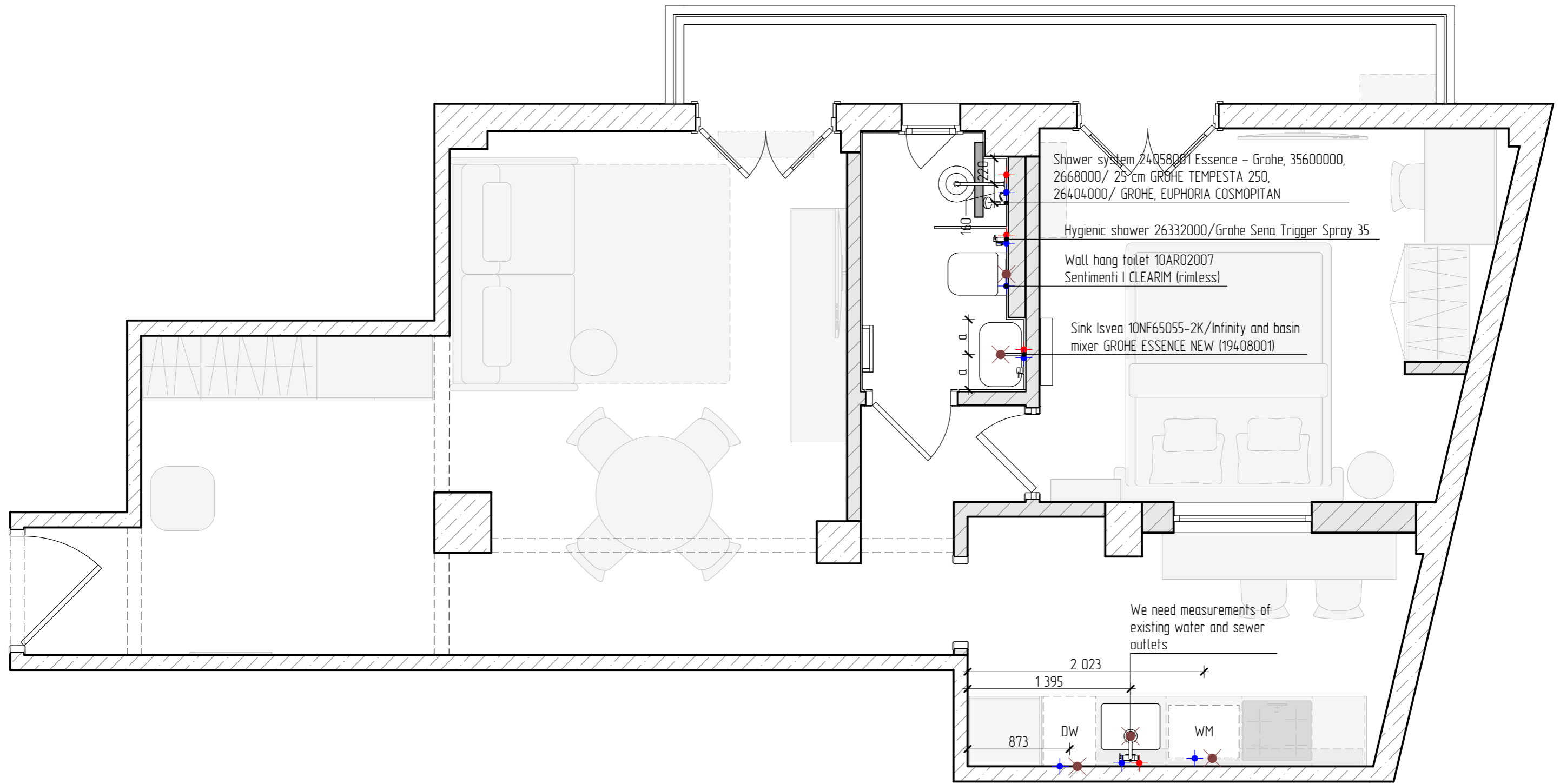


Explication of premises

| Number of the room | Name | Area, m2 | Room category |
|--------------------|-------------|----------------------|---------------|
| 1 | Hall | 7,94 | |
| 2 | Living room | 15,00 | |
| 3 | Corridor | 2,50 | |
| 4 | Kitchen | 7,50 | |
| 5 | Bedroom | 11,98 | |
| 6 | Shower room | 2,75 | |
| 7 | Balcony | 4,36 | |
| | | 52,03 m ² | |

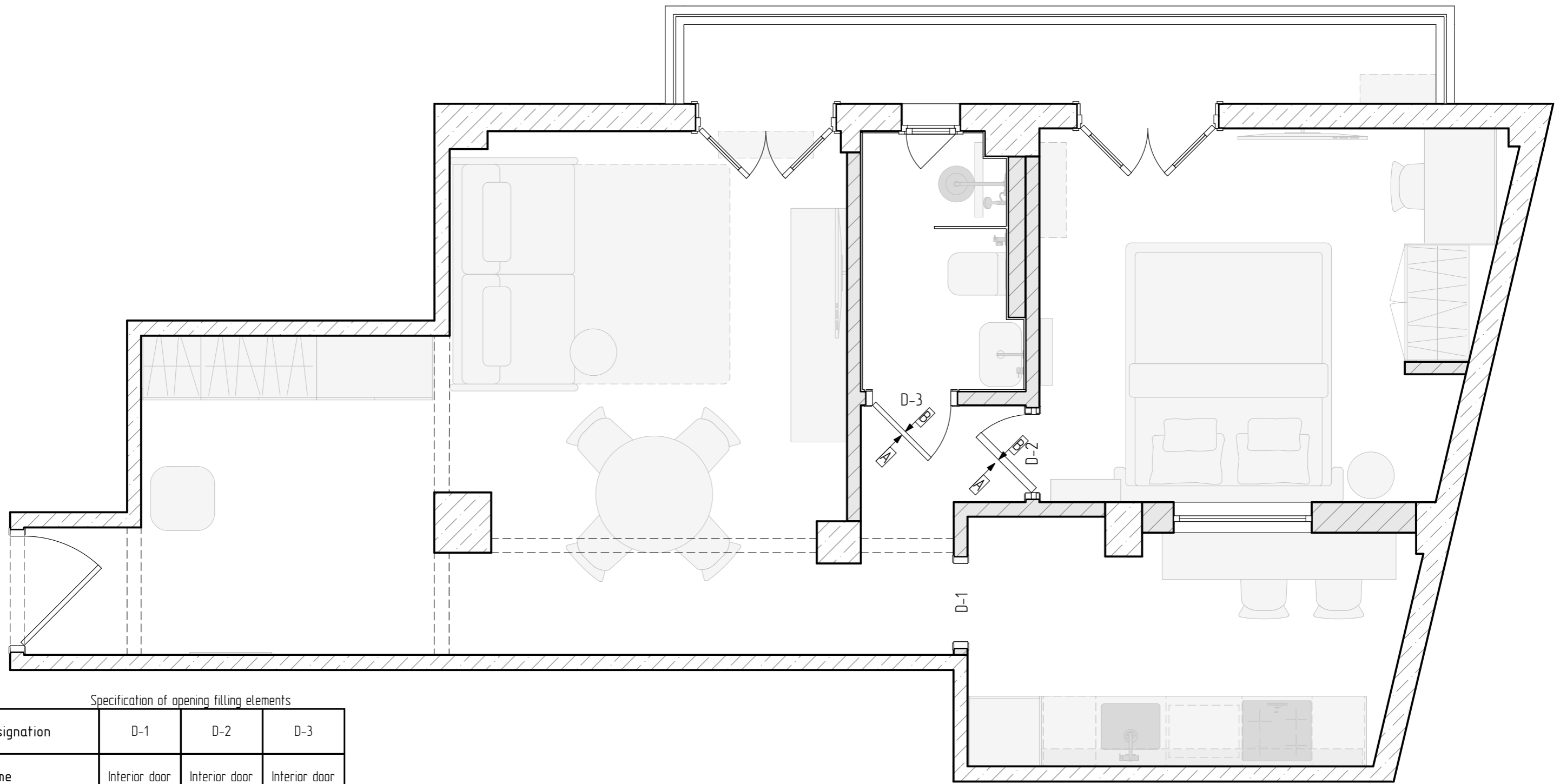
| Rev. | Rev. ar. | Sheet | N° doc | Sign. | Date |
|------|----------|-------|--------|-------|----------|
| | | | | | 16.02.24 |

Furniture arrangement plan 1:35; Explication of premises 1:1



- Notes:
1. All sizes are approximate and will be confirmed after measurements.
 2. Look at the elevation marks on the sweeps

| | | | | | |
|------|----------|-------|--------|-------|----------|
| | | | | | 16.02.24 |
| Rev. | Rev. ar. | Sheet | N° doc | Sign. | Date |

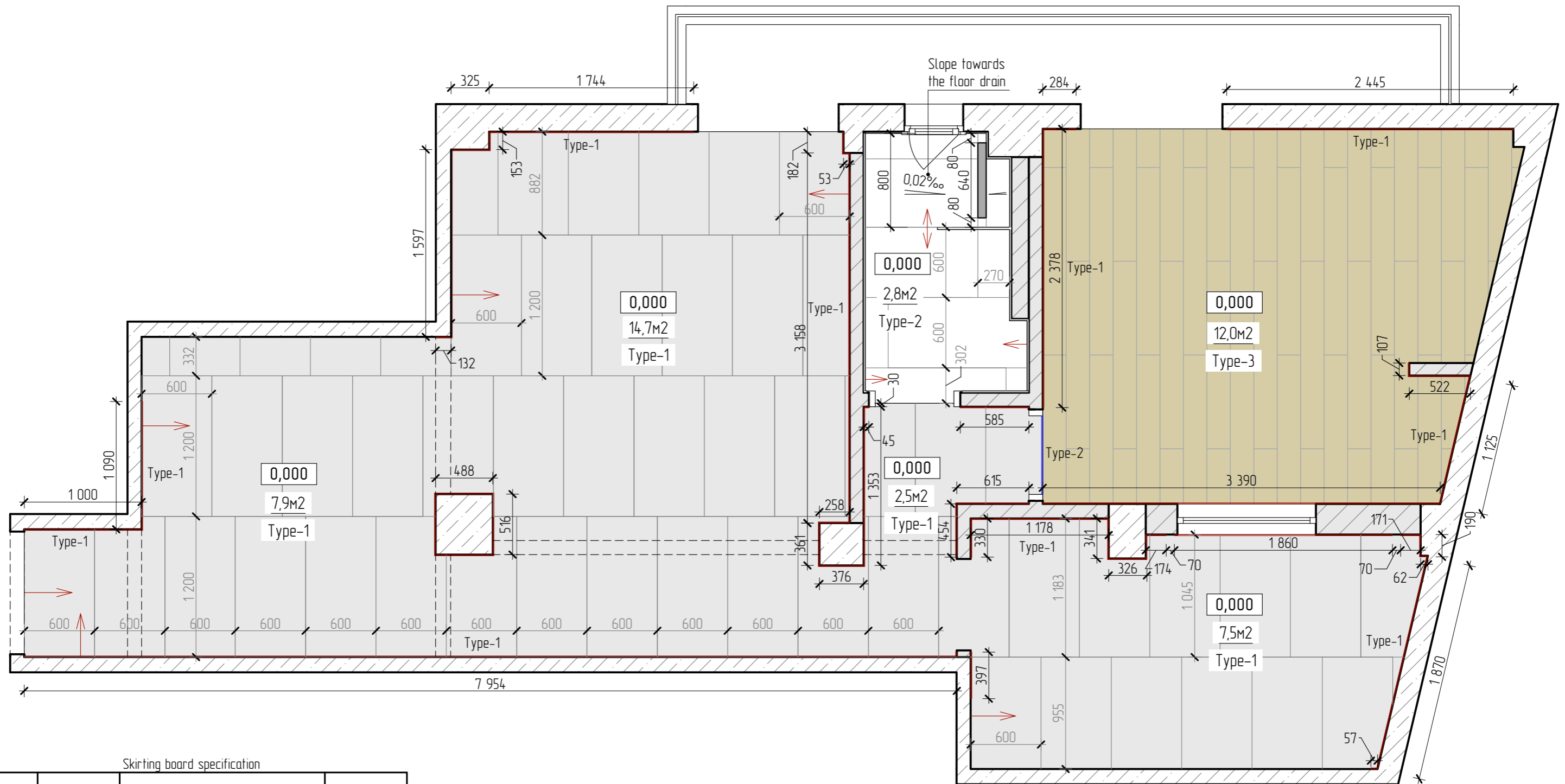


Specification of opening filling elements

| Designation | D-1 | D-2 | D-3 |
|----------------------|------------------|------------------|------------------|
| Name | Interior door | Interior door | Interior door |
| Door leaf dimensions | dimensions later | dimensions later | dimensions later |
| Doorway dimensions | dimensions later | dimensions later | dimensions later |
| Scheme | | | |
| Color side A | - | - | - |
| Color side B | - | - | - |
| WC | - | + | + |
| Inverted | - | - | - |

| Rev. | Rev. ar. | Sheet | N° doc | Sign. | Date |
|------|----------|-------|--------|-------|----------|
| | | | | | 16.02.24 |

Plan for filling openings 1:35; Specification of opening filling elements



Skirting board specification

| Type | Symbol | Element data, mm | Lenght, mm |
|------|--------|---------------------|------------|
| 1 | | Orac Decor skirting | 41 188 |
| 2 | | Cork compensator | 670 |

Floor finish specification

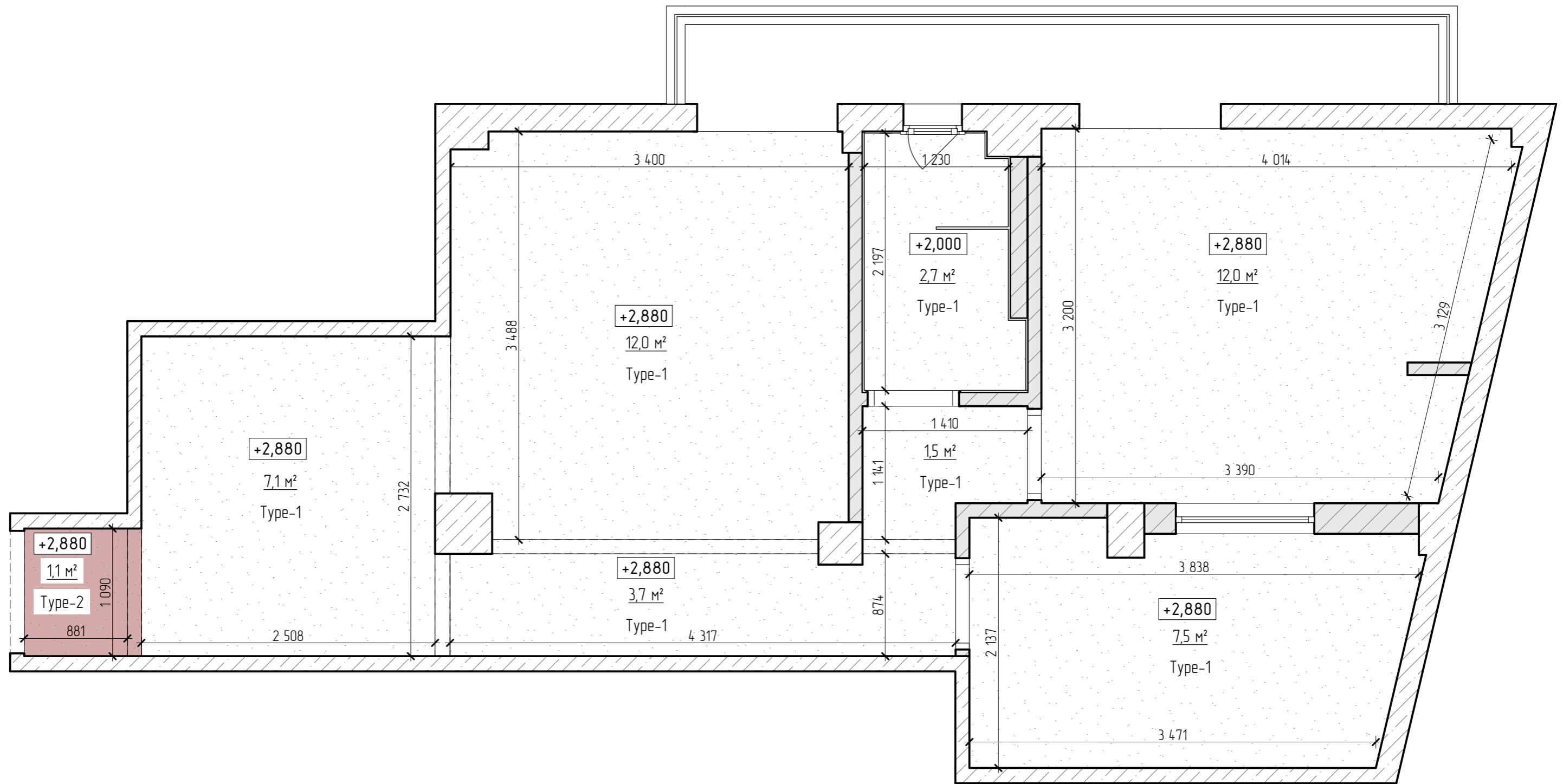
| Type | Symbol | Floor element data | Area, m ² |
|------|--------|--|----------------------|
| 1 | | PIETRA DI GRE 60X120 anthracite Unicom Starker | 33,13 |
| 2 | | COLORFUL LIGHT 60X120 by Pastorelli | 2,82 |
| 3 | | Existing parquet | 11,98 |

Notes:



1. All sizes are approximate and will be confirmed after measurements.
2. Installation of skirting boards after installation of furniture and doors.

| Rev. | Rev. ar. | Sheet | N° doc | Sign. | Date |
|------|----------|-------|--------|-------|----------|
| | | | | | 16.02.24 |

Floor plan 135; Floor finish specification 11; Skirting board specification 11

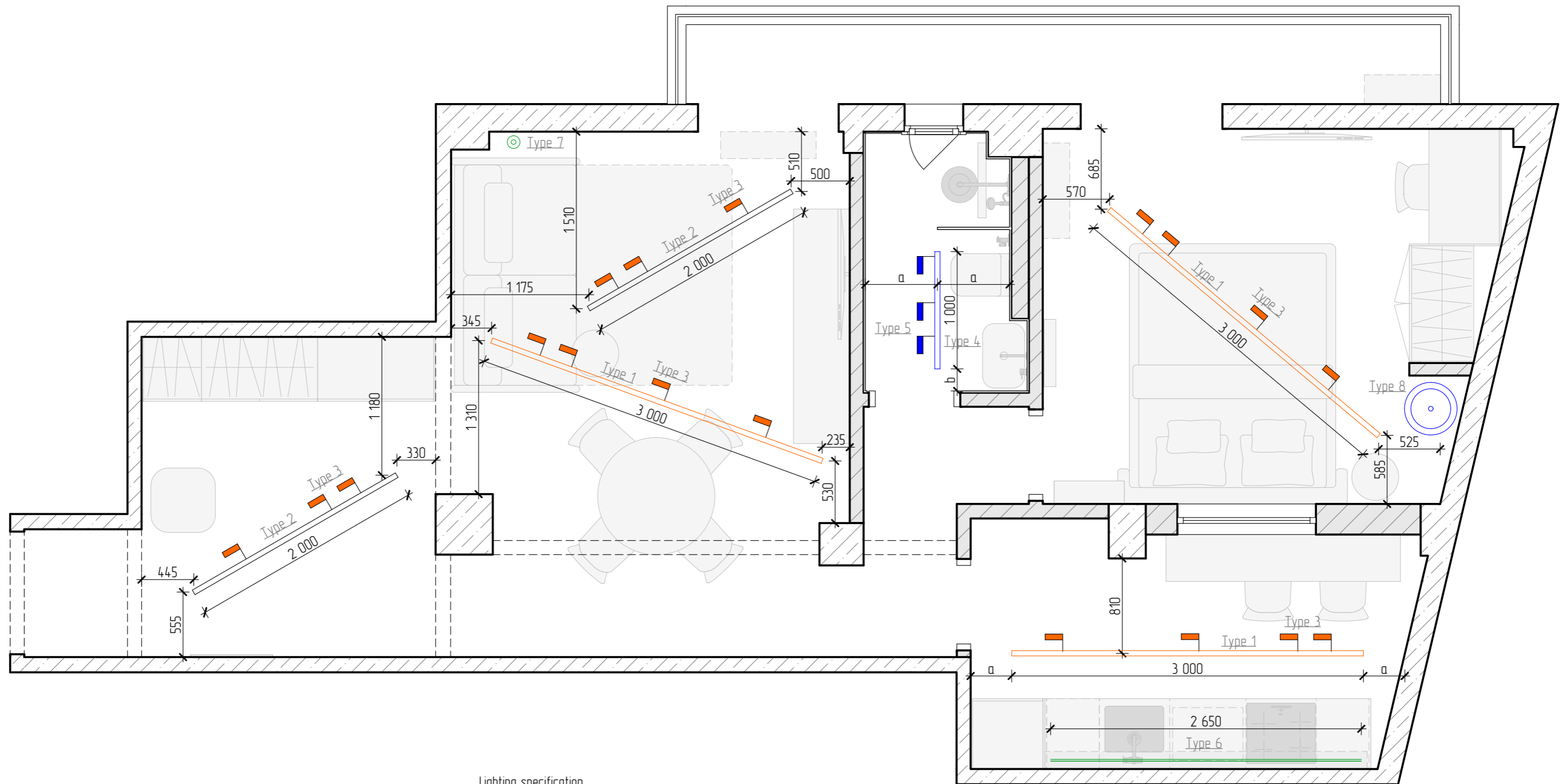


Ceiling finishing specification

| Ceiling type | Symbols | Ceiling element data | Area, m ² |
|--------------|---|--------------------------|----------------------|
| 1 |  | Ceiling painted white | 46,57 |
| 1 |  | Ceiling painted burgundy | 1,09 |

| Rev. | Rev. ar. | Sheet | N° doc | Sign. | Date |
|------|----------|-------|--------|-------|----------|
| | | | | | 16.02.24 |

Ceiling plan 1:35; Ceiling finishing specification 1:1

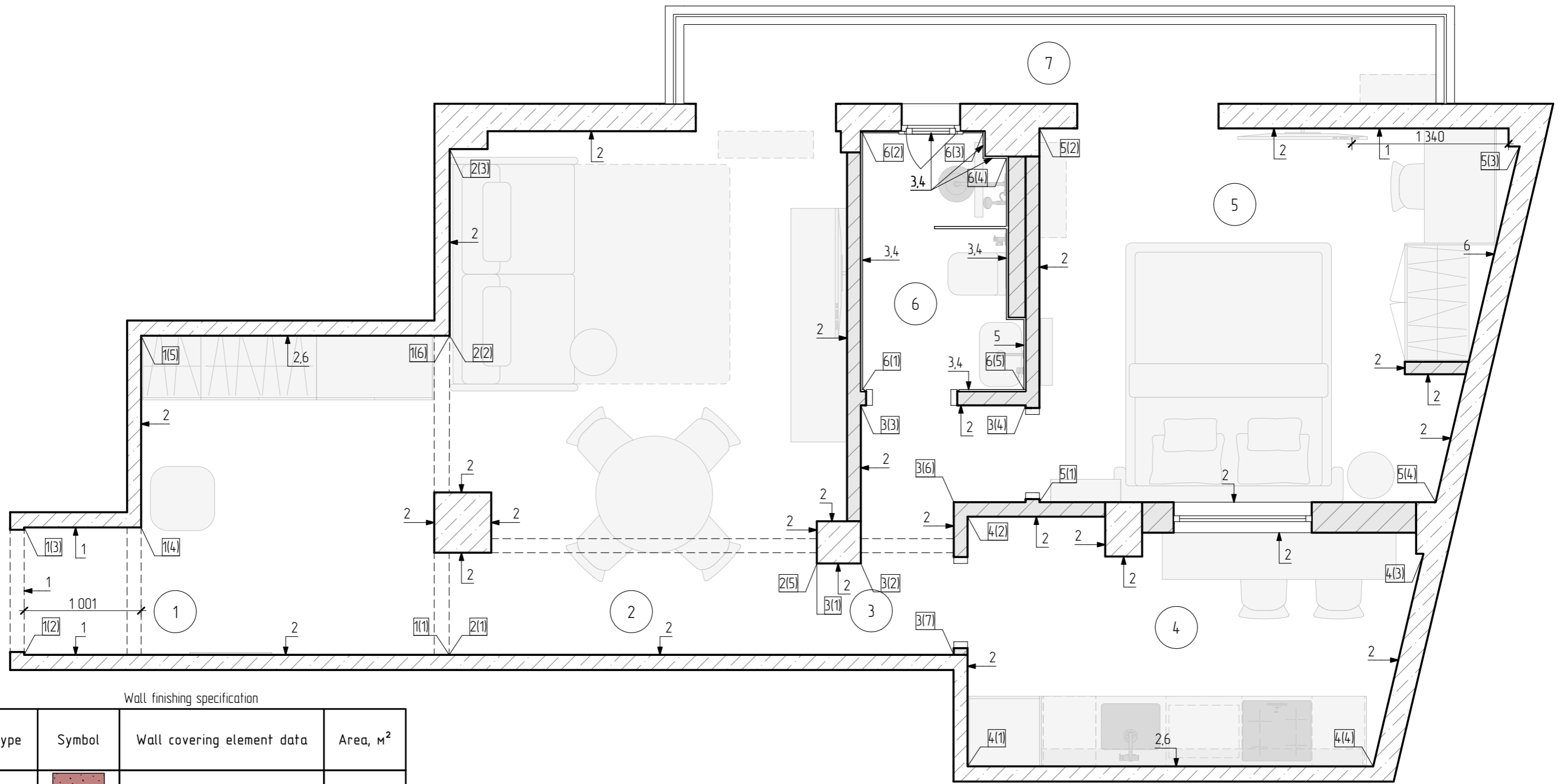


Lighting specification

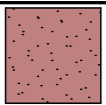
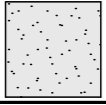
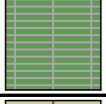

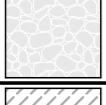

| Type | Symbol | Article | Name | V | Amount | Lenght | Type | Symbol | Article | Name | V | Amount | Lenght |
|--------|--------|---------|--|------|--------|--------|--------|--------|---------|------------|---|--------|-----------|
| Type-1 | | - | Τύπος MAGNO TRACK 48V 3μ (black) | 48 V | 3 | 9 000 | Type-7 | | - | Floor lamp | - | 1 | --- |
| Type-2 | | - | Τύπος MAGNO TRACK 48V 2μ | 48 V | 2 | 4 000 | Type-8 | | - | Floor lamp | - | 1 | --- |
| Type-3 | | - | Τύπος MAGNETIC TRACK LIGHT 15-60o 15W 12000LM 3000K (black) | 48 V | 18 | --- | | | | | | | 18 300 MM |
| Type-5 | | - | Τύπος MAGNETIC TRACK LIGHT 15-60o 15W 12000LM 3000K (white) | 48 V | 3 | --- | | | | | | | |
| Type-6 | | - | LED strip in profile for illumination (3000K) | - | 2 | 5 300 | | | | | | | |

| Rev. | Rev. ar. | Sheet | Nº doc | Sign. | Date |
|------|----------|-------|--------|-------|----------|
| | | | | | 16.02.24 |

Lamp arrangement plan 1-35; Lighting specification 1-1

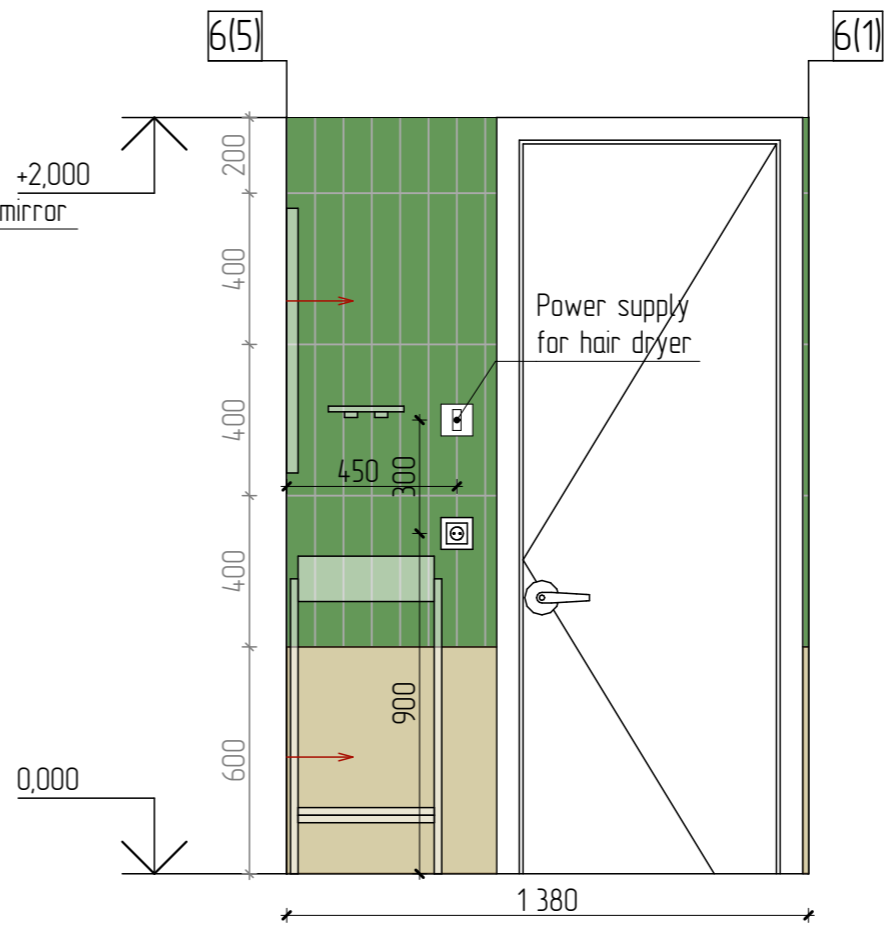
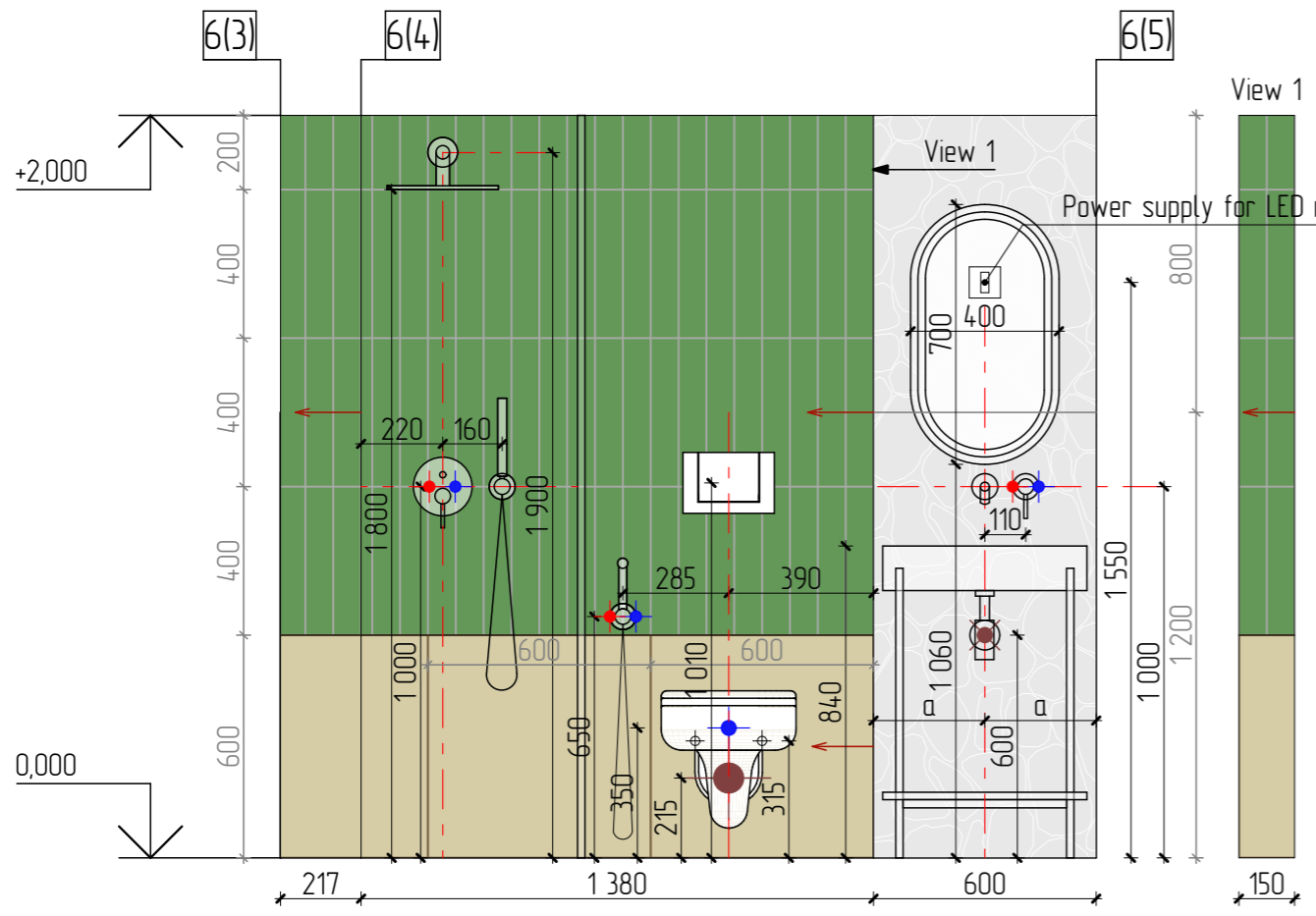
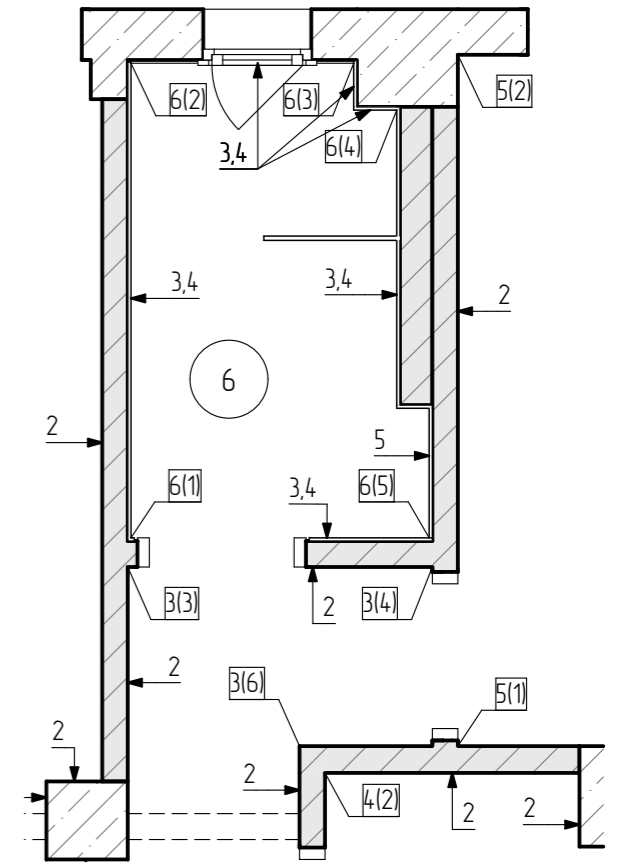
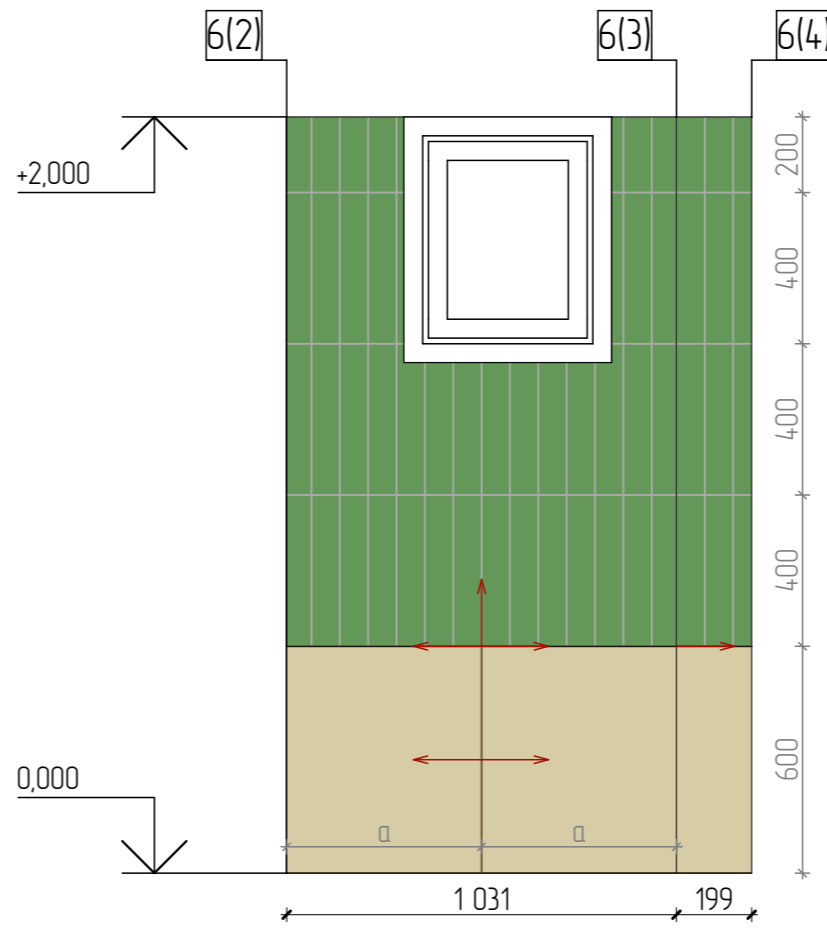
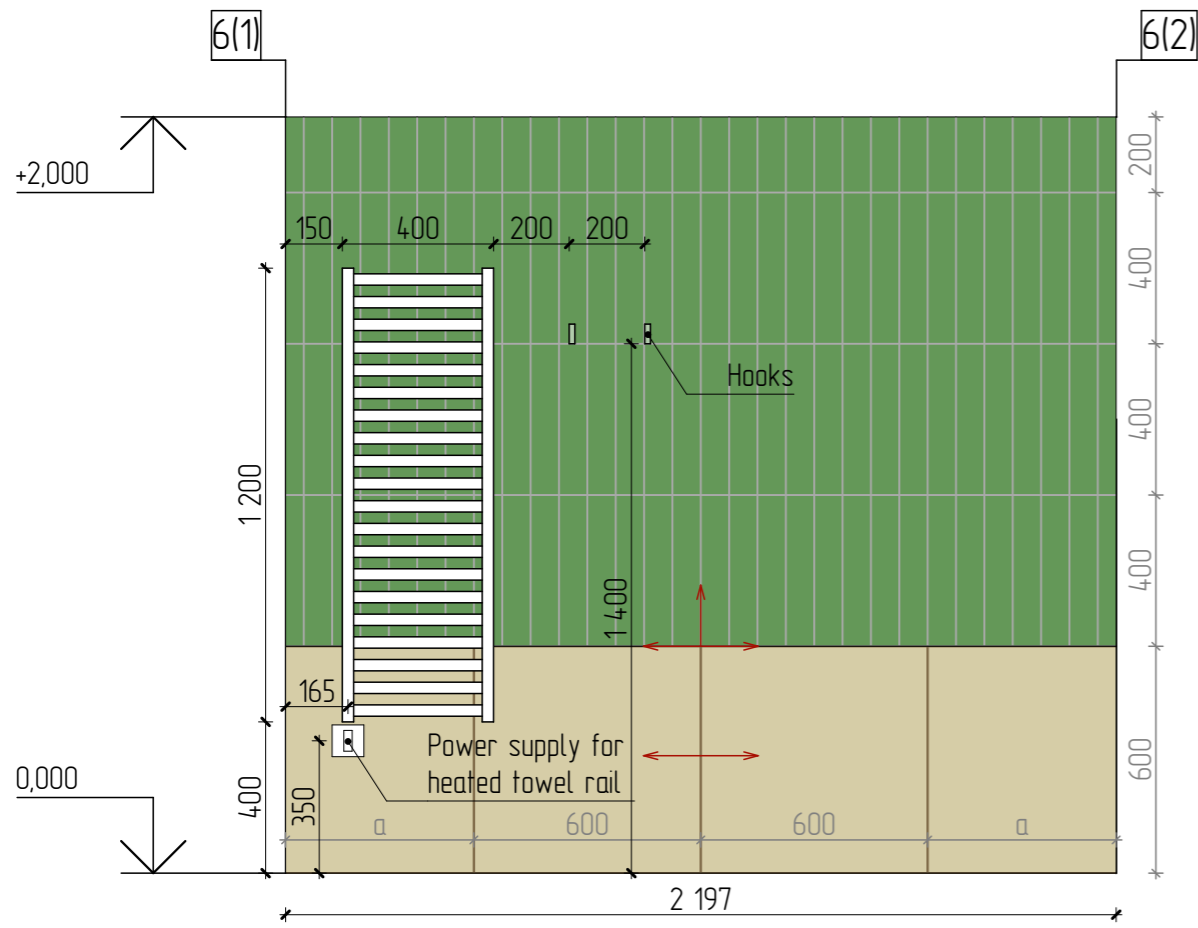


Wall finishing specification

| Type | Symbol | Wall covering element data | Area, m ² |
|------|---|---|----------------------|
| 1 |  | Paint for wall, burgundy color NCS S | - |
| 2 |  | Paint for wall, light beige color NCS S | - |
| 3 |  | COLORFUL by Pastorelli 7,5X 40 pine green | 7,7 |
| 4 |  | COLORFUL by Pastorelli 60x60 sand | 3,5 |
| 5 |  | COLORFUL LIGHT 60X120 by Pastorelli | 1,2 |
| 6 |  | Fine finishing | - |

| Rev. | Rev. ar. | Sheet | N° doc | Sign. | Date |
|------|----------|-------|--------|-------|----------|
| | | | | | 16.02.24 |

Wall finishings plan 1:35; Wall finishings specification 1:1



| Rev. | Rev. ar. | Sheet | N° doc | Sign. | Date |
|------|----------|-------|--------|-------|----------|
| | | | | | 16.02.24 |

Sweeps of shower room 1:20; Extract from wall finishings plan 1:35