



North Terrace | | Newcastle Upon Tyne | NE2 4AD

£1,450



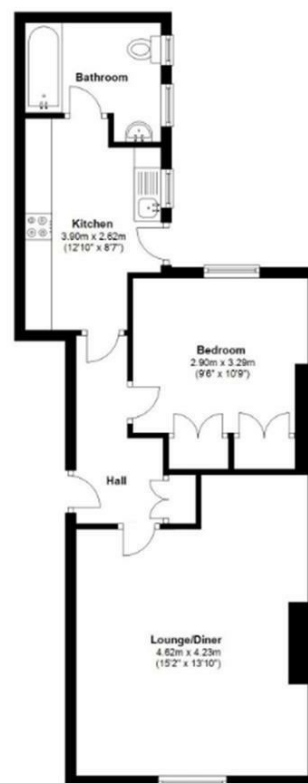
North Terrace |
Newcastle Upon Tyne | NE2 4AD
£1,450

Brand new large one bed apt | Students & Professionals |
Exceptional location



- Brand new refurbishment in June 2024
- Dedicated WFH area
- New lighting
- Premium Emma mattress included
- Prime location adjacent to RVI and Newcastle University
- New kitchen and bathroom
- All new flooring and decoration
- Brand new furniture pack
- Parking available
- Suitable for Students and Professionals

5B North terrace, Newcastle



Ground Floor Plan

Energy Efficiency Rating		Current	Potential
<i>Very energy efficient - lower running costs</i>			
(92 plus)	A		
(81-91)	B		
(69-80)	C	75	
(55-68)	D		
(39-54)	E		
(21-38)	F		
(1-20)	G		
<i>Not energy efficient - higher running costs</i>			
England & Wales		EU Directive 2002/91/EC	

Lower Ground Floor
27 Ridley Place
Newcastle upon Tyne
Tyne and Wear
NE1 8JN

0191 6403450
info@propertybynest.co.uk