



North Terrace | | Newcastle Upon Tyne | NE2 4AD

£1,100 Per month



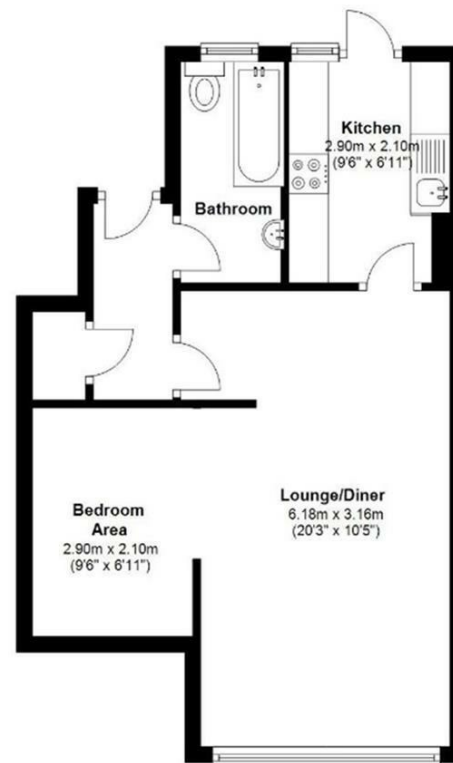
North Terrace |
Newcastle Upon Tyne | NE2 4AD
£1,100 Per month

Brand new studio | Students & Professionals | Exceptional location



- Brand new refurbishment in June 2024
- Dedicated WFH area
- New lighting
- Premium Emma mattress included
- Prime location adjacent to RVI and Newcastle University
- New kitchen and bathroom
- All new flooring and decoration
- Brand new furniture pack
- Parking available
- Suitable for Students and Professionals

5D North terrace, Newcastle



Loft Plan

Energy Efficiency Rating		Current	Potential
<i>Very energy efficient - lower running costs</i>			
(92 plus) A			
(81-91) B			
(69-80) C		75	
(55-68) D			
(39-54) E			
(21-38) F			
(1-20) G			
<i>Not energy efficient - higher running costs</i>			
England & Wales		EU Directive 2002/91/EC	

Lower Ground Floor
27 Ridley Place
Newcastle upon Tyne
Tyne and Wear
NE1 8JN

0191 6403450
info@propertybynest.co.uk