



MILOS

DECA

# MILOS

The Gentle Side Of Life



DECA





# About Milos

Welcome to MILOS Residences, nestled in the heart of Dubai Land Residence Complex (DLRC), Dubai, offers luxurious 1,2 & 3 BHK flats. DLRC is a location where everything is easily accessible, including Business Bay, Downtown and the new Al Maktoum International Airport.

Every space in Milos is thoughtfully designed, life here is centered around you.

And there's a little something for everyone.

Its located just a stone's throw away from world class amenities like Al-Habtoor Polo Resort, Dubai Outlet Mall, Sheikh Zayed University, SQ7 Equestrian Club, Fazza Square Shooting Range.



DECA



# MILOS

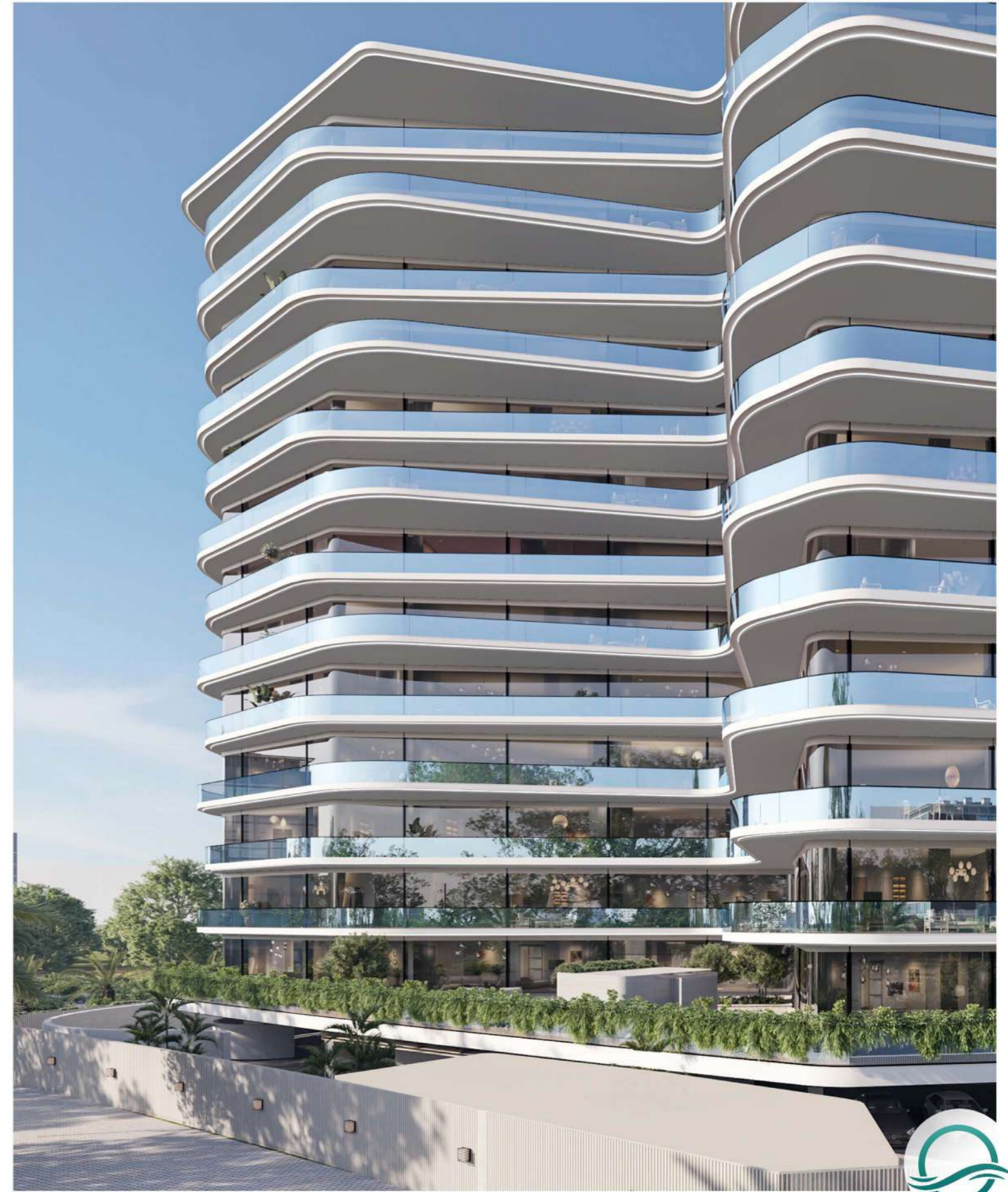


# Architecture

Milos offers a unique blend of modern elegance and natural serenity, with stunning poolside balconies and terraces that provide a perfect retreat from the bustling city life.

Each detail of our building has been meticulously crafted to create a harmonious blend of indoor and outdoor living spaces, allowing residents to enjoy the beauty of Dubai skyline from the comfort of their own home.

An outdoor cinema, a gym, a swimming pool and a kids' play area, here everything is within the tower.



# About Dubai



DECA

In the recently announced Dubai Urban Development Strategy, Dubai has embarked on an ambitious plan to increase land use for hotels and tourist activities by 134% and length of public beaches by 400%. In a bid to promote itself as health and education hub, land area allocated for this purpose will see an upward increase of 25%.

To improve quality of life, nature reserves and natural areas to constitute 60% of the emirates total area.

All these initiatives are targeted to increase the population of Emirates to 5.8 million by 2040 and a daytime population to 7.8 million. This targeted increase in population is expected to keep up the demand for real estate in the Emirates.



# Future of Dubai

UAE's vision for the next 50 years is to focus on enhancing people's happiness and quality of life.

|   |  |  |
|---|--|--|
|  <h3>Global financial hub</h3> <p>Dubai's position at the centre of the world means professionals can manage markets in the far east and the Americas all within the same day - your new 'power 8 til 8' time zone.</p>                        |  <h3>A magnet for businesses and investors</h3> <p>The world's leading companies, family offices, investment funds and entrepreneurs already call Dubai home.</p>  |  |
|  <h3>Connecting the world</h3> <p>Home to the world's busiest international airport, third largest post operator, and one of the most advanced digital networks - unparalleled connectivity to the largest economies and future markets.</p> |  <h3>Global hub for talent</h3> <p>Dubai's dynamic business ecosystem, open visa policies and world-class lifestyle offering attracts the world's best and most diverse talent pool found anywhere.</p> |  <h3>Future Forward</h3> <p>Designing tomorrow's solutions today across all new age sectors and industries, Dubai's innovative business-friendly eco-system is built for fast growth and future-forward innovation.</p> |

In the recently announced Dubai Urban Development Strategy, Dubai has embarked on an ambitious plan to increase land use for hotels and tourist activities by **134%** and length of public beaches by **400%**.

In a bid to promote itself as health and education hub, land area allocated for this purpose will see an upward increase of **25%**.

To improve quality of life, nature reserves and natural areas to constitute **60%** of the emirates total area.

All these initiatives are targeted to increase the population of Emirates to 5.8 million by 2040 and a daytime population to 7.8 million. This targeted increase in population is expected to keep up the demand for real estate in the Emirates.



TUCKED AWAY AMIDST THE SPRAWLING EDUCATION HUB,  
YOU'LL FIND THE LIVELY AND VIBRANT NEIGHBORHOOD

DUBAI LAND  
RESIDENCE COMPLEX

DECA





# Dubai Land Residence Complex

- Dubai Land Residence Complex (DLRC), strategically located between the Emirates Road & Al Ain Road, it's located conveniently close to prominent education hubs, schools and universities, hospitals, and convenience stores.
- Its proximity to Dubai's main business hubs makes it ideal for professionals and families.
- DLRC has two community hubs with features like basketball court, volleyball court, children's play areas, shaded seating areas set amidst trees and grassy areas.
- It enjoys an excellent neighborhood and is a short drive from communities like Al Barari, The Villa Community, VillaNova, and the Silicon Oasis,
- Its connected to Dubai Mall and Burj Khalifa Metro station through regular RTA buses.



# SITE PLAN



|                         |         |
|-------------------------|---------|
| DUBAI MALL              | 20 MINS |
| OUTLET MALL             | 7 MINS  |
| BURJ KHALIFA            | 20 MINS |
| BURJ AL ARAB            | 22 MINS |
| MUSEUM OF THE FUTURE    | 20 MINS |
| IMG WORLD               | 10 MINS |
| GLOBAL VILLAGE          | 12 MINS |
| MIRACLE GARDEN          | 16 MINS |
| DXB AIRPORT             | 20 MINS |
| ACADEMIC CITY           | 10 MINS |
| SHEIKH ZAYED UNIVERSITY | 10 MINS |

\* All above mentioned times are Approximate



DECA



# EMBRACE ELEVATED LIVING



DECA

# FACILITIES



# FACILITIES



24/7 SECURITY SYSTEM



FITNESS CENTRE



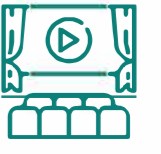
BBQ AREA



KIDS PLAY AREA



JACUZZI



OUTDOOR CINEMA



YOGA & MEDITATION



SAUNA & STEAM ROOM



POOL



TERRACE MULTI-PURPOSE AREA



HOUSE KEEPING ON CALL



CAR CLEANING SERVICES ON CALL



INSTAGRAM SPOTS



DOCTOR ON CALL



NANNY ON CALL



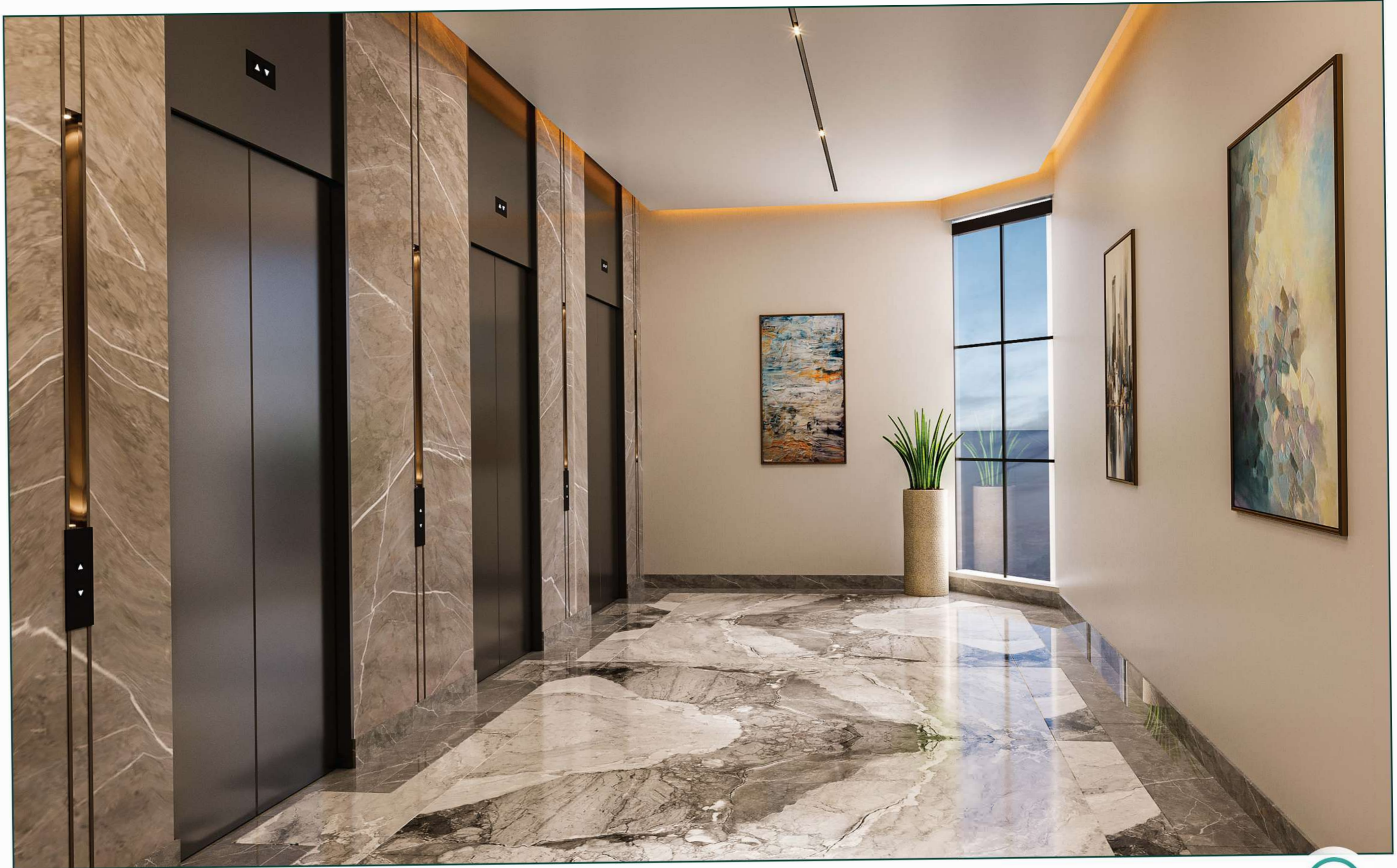
COVERED CAR PARK



RECEPTION



LIFT LOBBY



POOL



DECA





GYMNASIUM



SAUNA



DECA



ROOF TOP



DECA



ROOF TOP



DECA



KIDS PLAY AREA



LIVING ROOM

1 BED APARTMENT



KITCHEN

1 BED KITCHEN



DECA



BEDROOM

1 BED APARTMENT





BATHROOM



LIVING ROOM

2 BED APARTMENT



DECA



KITCHEN

2 BED KITCHEN



DECA



BEDROOM

2 BED APARTMENT



BEDROOM



BATHROOM

2 BED APARTMENT



PARKING



DECA



MILOS 

DECA







DECA

+971 056 86 86 786

+971 600 55 55 66

[info@deca-properties.com](mailto:info@deca-properties.com)

[www.decaproperties.ae](http://www.decaproperties.ae)

UTC-14, Sheikh Zayed Road

Al Wasl, Dubai