



Apartment 2 Pendle House, Clitheroe Road,
Chatburn

Chain Free £250,000

An awe-inspiring first floor apartment with its own private roof terrace enjoying a sunny south westerly orientation. With two distinctive wide bay windows to accentuate the already substantial space, this is a home to truly express your individuality. The stylish accommodation briefly comprises: hall, boot room/utility, open plan kitchen/diner/lounge, two double bedrooms and two bathrooms (en-suite to the master). Situated next to the railway line and just a short walk into Chatburn, or Shackletons for a coffee. There are two designated car parking spaces also. (1,063 sq ft/98.8 sq m approx/EPC: C).

Ideal for those in search of something refreshingly different.



Apartment 2 Pendle House, Clitheroe Road, Chatburn

Directions

When travelling from our office proceed to the end of York Street, cross the roundabout into Chatburn Road. Continue past Clitheroe Hospital and the property can be found on the left-hand side shortly after passing Shackleton's Garden Centre. Before conversion, Pendle House was the Pendle Hotel, a distinctive Victorian era property.

Services

Mains supplies of gas, electricity, water and drainage. Gas central heating from a Baxi condensing combination boiler. Council tax is payable to RVBC Band C. The tenure is Leasehold. 250 years from 1st December 2018 subject to a ground rent of £199 per annum. Service charge c £50 per pcm. Building insurance is split between 4 .

Additional Features

The property has PVCu double glazed sash windows, LED mood lighting, phone entry system.

Location

Conveniently located between Clitheroe and the main village of Chatburn. The property enjoys quick and easy access to the A59 with the nearest railway station available in Clitheroe.

Accommodation

The shared main entrance opens to a hall, a staircase rising to the first floor. On the first floor landing you'll see the private entrance doors to the apartment and also the door to its private roof terrace. Situated off the main hall there is a boot room/utility with plumbing for a washing machine, hanging rails and shoe storage. The light and spacious L-shaped living space combines lounge/dining and kitchen areas and has windows on two elevations including a wide south facing bay opposite a feature rustic brick wall. The stylish contemporary kitchen cabinetry has contrasting quartz counters including a peninsular unit. The quality Neff cooking appliances comprise a Neff oven, microwave oven and a ceramic hob beneath a glass and stainless steel extractor. The integrated appliances consist of a fridge/freezer and a dishwasher. There is plumbing for a washing machine beneath the composite sink/mixer tap. In addition to an array of LED down-lighters, the cabinets have kickspace LED and up-lighters too.

The master bedroom also has a wide bay window with a varied aspect that includes Shackleton's Garden Centre, the trading estate and in the foreground, stabling for horses next to the tree-edged railway line; an eclectic mix if ever there was one. The vendor advises they have plans for a 2.8 metre wide opening with bi-fold doors that would give access to the roof terrace, if desired. The en-suite bathroom strikes a bold note and comprises low suite wc, vanity washbasin and a shower tray with a glass screen and a thermostatic shower. Towels warm on a chromed ladder radiator. Located on a separate corridor with its own access to the first floor landing is the second double bedroom. It has windows on two elevations, catching the rising sun. Next to it a three-piece bathroom comprising a P-shaped shower bath with a shower and glazed screen over, low suite wc and a pedestal washbasin. For your towels a chromed ladder radiator and the walls are part tiled.

Outside

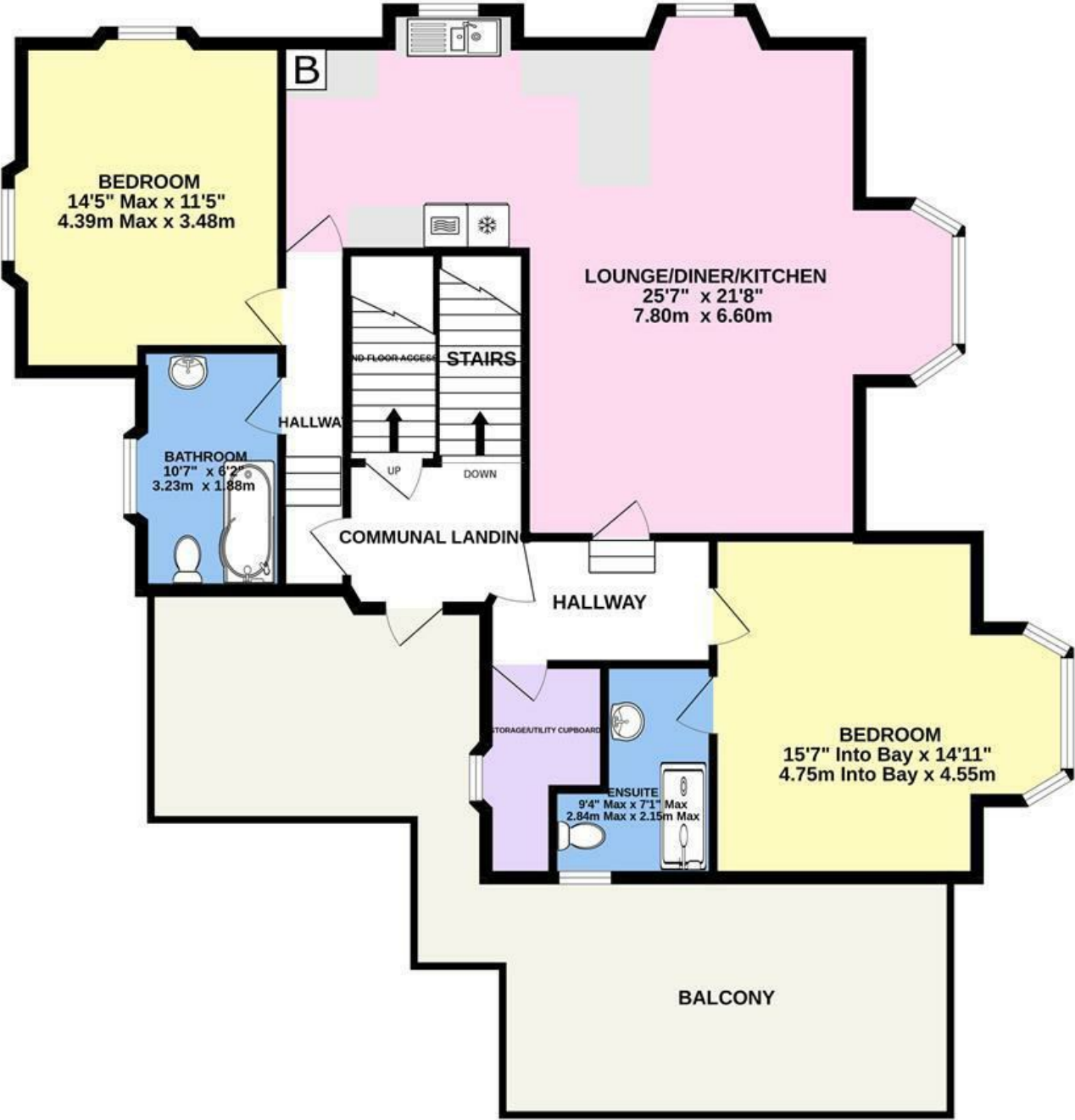
The apartment has a desirable private roof terrace with glass screens, Indian stone pavers and LED strip mood lighting. With a south westerly aspect it makes the most of a sunny day and is a welcome place to relax and unwind. It's also a great vantage point to see the steam trains pass by in the summer months. There are two designated car parking spaces very close to the apartment within the main car park.

Internal viewing is absolutely essential in order to fully appreciate the unique nature of this property.

Viewing

Strictly by appointment with Anderton Bosonnet - a member of The Guild of Property Professionals.

FIRST FLOOR
 1063 sq.ft. (98.8 sq.m.) approx.



TOTAL FLOOR AREA : 1063 sq.ft. (98.8 sq.m.) approx.

Whilst every attempt has been made to ensure the accuracy of the floorplan contained here, measurements of doors, windows, rooms and any other items are approximate and no responsibility is taken for any error, omission or mis-statement. This plan is for illustrative purposes only and should be used as such by any prospective purchaser. The services, systems and appliances shown have not been tested and no guarantee as to their operability or efficiency can be given.
 Made with Metropix ©2023



All fixtures and fittings in these particulars are included in the sale, all others in the property are specifically excluded. Please note that we have not tested any apparatus, fixtures, fittings or services and so cannot verify that they are in working order or fit for their purpose. Photographs are reproduced for general information and it must not be inferred that any item is included for sale with the property. Please note: Although these particulars are thought to be materially correct, their accuracy is not guaranteed and they do not form any part of a contract.

01200 428691
clitheroe@athertons-uk.com

www.athertons-uk.com