



# Persona Homes

by Home Group

## Eamont Chase

Penrith

### The Caldew

*Available as a semi-detached or terrace, this stylish two-bedroom home is a great choice for making that first step onto the property ladder.*

The open-plan living and dining area with French doors leading out to the private rear garden is a lovely space for entertaining or relaxing. Two good-sized bedrooms, a family bathroom and handy downstairs cloakroom complete this lovely home.



#### Contact us:

T: 0800 030 8888

E: [contactus@yourpersonahome.com](mailto:contactus@yourpersonahome.com)

W: [yourpersonahome.com](http://yourpersonahome.com)

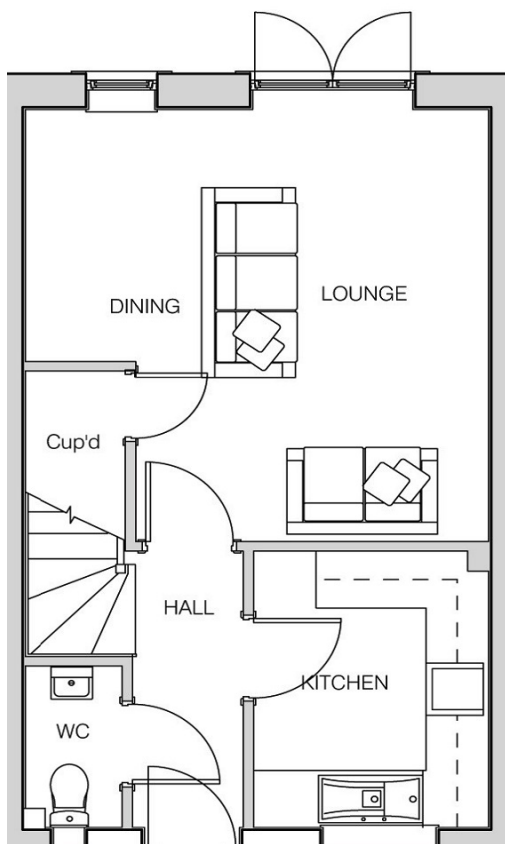
Eamont Chase, Carleton, Penrith, CA11 8TY



## Ground floor

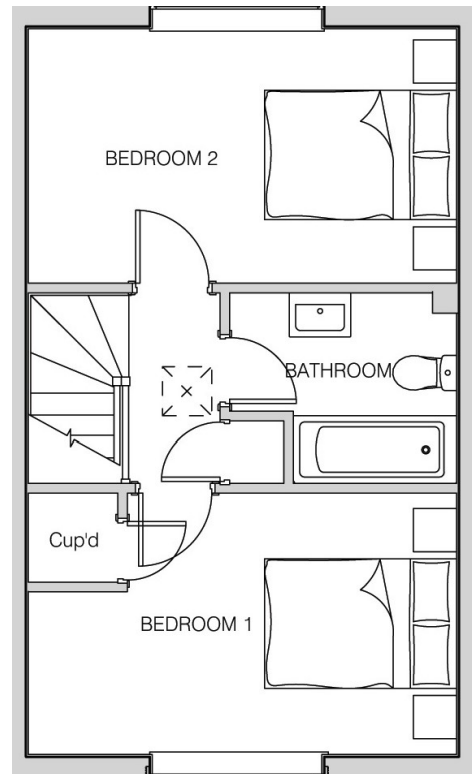
2 bedroom home

Hall	3.11m x 1.06m
Living/dining area	4.55m x 4.40m
Kitchen	2.90m x 2.20m



## First floor

Main bedroom	4.41m x 2.65m
Bedroom 2	4.41m x 2.73m
Bathroom	2.36m x 1.89m
Total Area	68.2m <sup>2</sup> / 734 sq ft



Any floor plans are a general outline of the layout of the property for guidance only. All measurements are approximate and may vary and any intending purchasers should not rely on them as statements of fact or representations of fact but must satisfy themselves by inspection or otherwise as to their accuracy. Dimensions shown are not intended to be relied upon for installation of appliances or items of furniture or otherwise. Cgi's and images are for illustrative purposes only.