

CROFT ESTATES

LONDON



Ossulton Way

London N2

£2,100 Per month

Croft Estates are pleased to offer this well-presented, purpose-built first-floor apartment located in the highly sought-after Hampstead Garden Suburb. The apartment features a spacious double reception room, which opens onto a private balcony, perfect for enjoying your morning coffee or unwinding after a long day. The flat also benefits from access to beautifully maintained communal gardens, offering peaceful outdoor space.

Monthly Rent: £2,100.00 Deposit: £2,425.00

This attractive apartment offers both comfort and convenience in a desirable location. Early viewings are highly recommended.

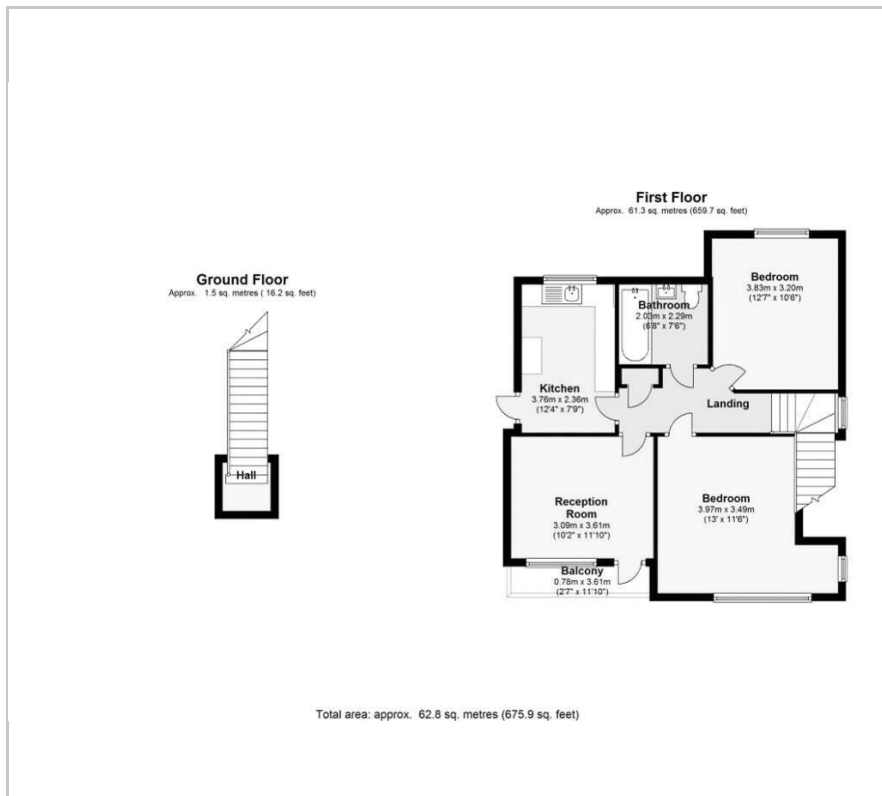
Viewing

Please contact our London Lettings Office on +44 (0)20 3830 8882 if you wish to arrange a viewing appointment for this property or require further information.

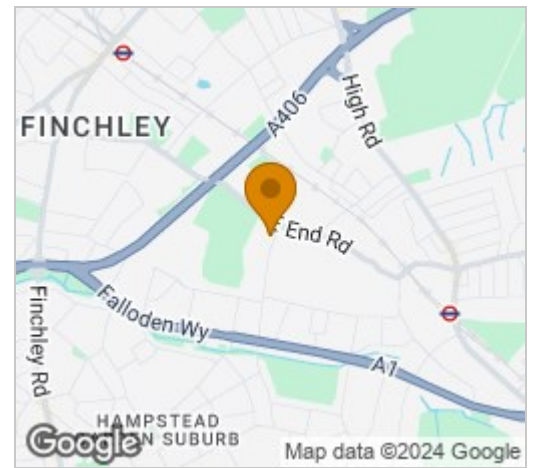
- 2 Double bedrooms
- Double reception room
- Bathroom
- Balcony
- Gardens
- Separate fitted kitchen
- Hampstead Garden Suburb
- Close to all amenities
- Communal gardens



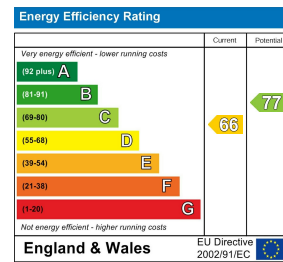
Floor Plan



Area Map



Energy Efficiency Graph



These particulars, whilst believed to be accurate are set out as a general outline only for guidance and do not constitute any part of an offer or contract. Intending purchasers should not rely on them as statements of representation of fact, but must satisfy themselves by inspection or otherwise as to their accuracy. No person in this firm's employment has the authority to make or give any representation or warranty in respect of the property.