

CROFT ESTATES

LONDON



London NW8

£5,633 Per month

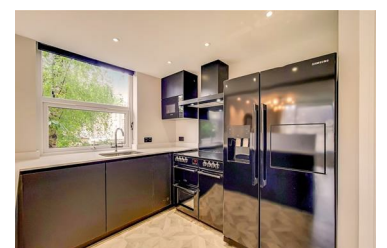
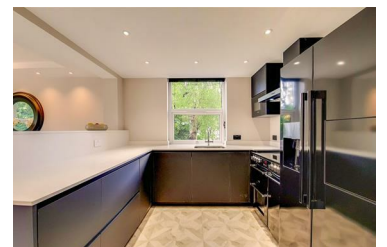


Croft Estates is delighted to offer this spacious four-bedroom apartment, approximately 1,198 sq ft (111 sq m), located on the first floor of the highly sought-after Boydell Court in St John's Wood. This well-presented apartment features three generously sized double bedrooms, a fourth bedroom/study, and two modern bathrooms, including one en-suite. The bright and airy reception/dining room is perfect for entertaining, while the fully fitted kitchen and guest WC provide added convenience. The apartment is enhanced by wooden flooring throughout, creating a sleek and modern feel.

Boydell Court offers exceptional amenities, including a 24-hour concierge service, a passenger lift, and off-street parking available on a first-come, first-serve basis. Heating and hot water are included in the rent, adding extra value to this fantastic property.

Camden Council Tax Band: F. Security Deposit: £7,800 (Equivalent to 6 Weeks' Rent).

- 4 Bedrooms
- 2 Bathrooms (one ensuite)
- Guest cloakroom
- Off street parking
- 24 Hour concierge
- Gated Development
- Newly refurbished
- 1198 sq ft



Suite 58 Hampstead House 176 Finchley Road, London, NW3 6BT
Tel: +44 (0)20 3830 8882 Email: enquiries@croftestates.com croftestates.com