

CROFT ESTATES

LONDON



Merchant Square East

London W2

£7,323 Per month

Croft Estates presents a stunning 9th floor apartment situated within prestigious building. This apartment offers superb views across the London skyline and Grand Union Canal.

This unique apartment comprises a spacious living and entertaining open plan kitchen and reception area with the Canal views, three double bedrooms (the master bedroom with an en-suite bathroom), a guest cloakroom, guest bathroom and ample storage space.

The Building itself is located in the Paddington Basin and features a concierge, lift service and secure underground parking is included.

(HOLDING DEPOSIT= 1 WEEKS RENT, SECURITY DEPOSIT £7,323.33 = 1 CALENDAR MONTH, MONTHLY RENT £7,323.33, COUNCIL TAX BAND E, EPC B).

- 9th Floor Apartment
- 3 bedrooms
- 2 bathrooms
- Concierge service
- CCTV/ Key entry phone
- Central Location
- Private underground parking spaces
- Available furnished or unfurnished

Viewing

Please contact our London Lettings Office on +44 (0)20 3830 8882 if you wish to arrange a viewing appointment for this property or require further information.



3



2



1



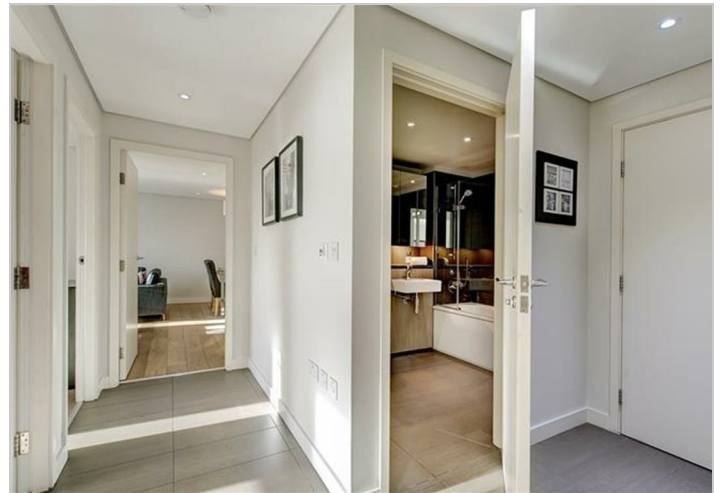
Floor Plan



Area Map



Energy Efficiency Graph



These particulars, whilst believed to be accurate are set out as a general outline only for guidance and do not constitute any part of an offer or contract. Intending purchasers should not rely on them as statements of representation of fact, but must satisfy themselves by inspection or otherwise as to their accuracy. No person in this firm's employment has the authority to make or give any representation or warranty in respect of the property.