

CROFT ESTATES

LONDON



London NW8

£1,200 Per week



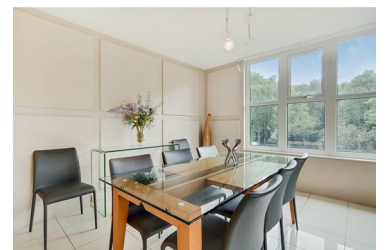
Experience unparalleled comfort and timeless elegance in this recently refurbished gem nestled within the sought-after Boydell Court complex, centrally positioned in the vibrant St John's Wood neighbourhood.

Nestled on the first floor, this charming apartment boasts an inviting open-plan design, seamlessly connecting the kitchen, reception, and dining areas, perfect for intimate gatherings and everyday living.

Discover tranquility in three generously sized double bedrooms, each adorned with convenient built-in wardrobes. Two bedrooms offer the added luxury of en-suite bathrooms, while a third family bathroom ensures utmost convenience for residents and guests alike.

Enhanced with practical amenities including air-conditioning throughout, a reliable 24-hour concierge service, elevator access, and the option for separate parking rental, this residence offers a harmonious blend of comfort and convenience.

- Available Now
- 3 Bathrooms
- 1138 sq.ft
- Gated Development
- 3 Double Bedrooms
- Newly refurbished
- 24 Hour concierge



Suite 58 Hampstead House 176 Finchley Road, London, NW3 6BT
Tel: +44 (0)20 3830 8882 Email: enquiries@croftestates.com croftestates.com