



BLOOMFIELD ROAD

Highgate | N6 4ET

VICTORIAN TERRACED TOWNHOUSE ON THE MARKET FOR THE FIRST TIME IN NEARLY 30 YEARS

- Five double bedrooms.
- 3461 sq.ft / 321.53 sq.m of internal space.
- Arranged over four floors.
- 47 ft south-facing garden.
- Option to extend STPP.
- Off-street parking for 2 cars.
- Minutes walk from Highgate High Street and Highgate Station.



ALEXANDER
MAIN



ALEXANDER
MAIN





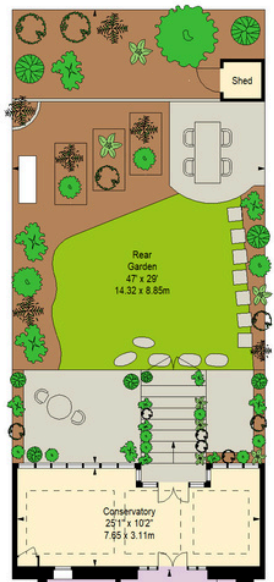


ALEXANDER
MAIN

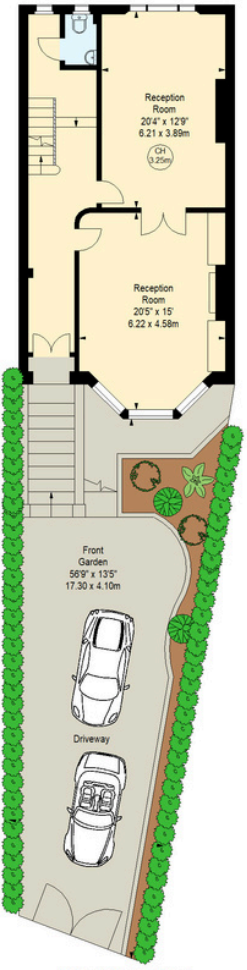
Bloomfield Road, N6

Approximate gross internal area

3461 sq ft / 321.53 sq m

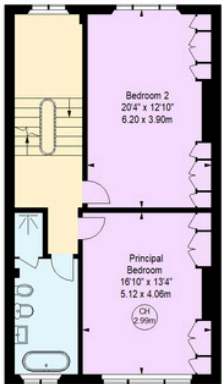


Lower Ground Floor

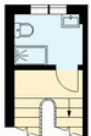


Raised Ground Floor

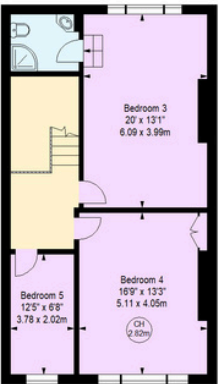
Key :
CH - Ceiling Height



First Floor



First Floor
Half Landing



Second Floor



Illustration For Identification Purposes Only.
All measurements and areas are approximate, not to scale.
© Orange Tree Photography

ALEXANDER
MAIN

WWW.ALEXANDERMAIN.CO

077906 41484