



| Watermillock | Penrith | CA11 0JN

£1,395,000



david britton
ESTATES

Key features

- Nestled in the sought-after Watermillock area
- Seven Bedrooms: Elegant and spacious accommodations
- Luxury En Suites: Includes two double rooms with en suite bathrooms
- Owner's Retreat: Modern two-bedroom flat with scenic views
- Charming Holiday Let: Two-bedroom accommodation ideal for extended stays
- Close to Ullswater: Easy access to marinas, yacht clubs, and scenic cruises.
- Five-bay oak frame garage for parking and storage
- Ample additional parking available
- 1.5-acre estate with mature gardens and woodland
- Versatile property for holiday let, B&B, boutique Hotel

Description

Introducing Knotts Mill Country Lodge: Premier Commercial Property in Watermillock

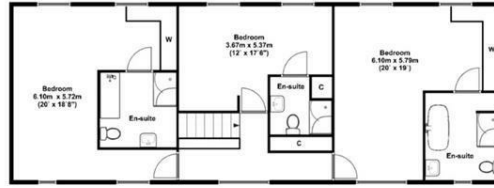
Discover Knotts Mill Country Lodge, an outstanding seven-bedroom property located in the sought-after Watermillock area. This exceptional estate seamlessly combines modern luxury with the breathtaking natural beauty of the Lake District, making it an ideal choice for a thriving hospitality venture.

Directions

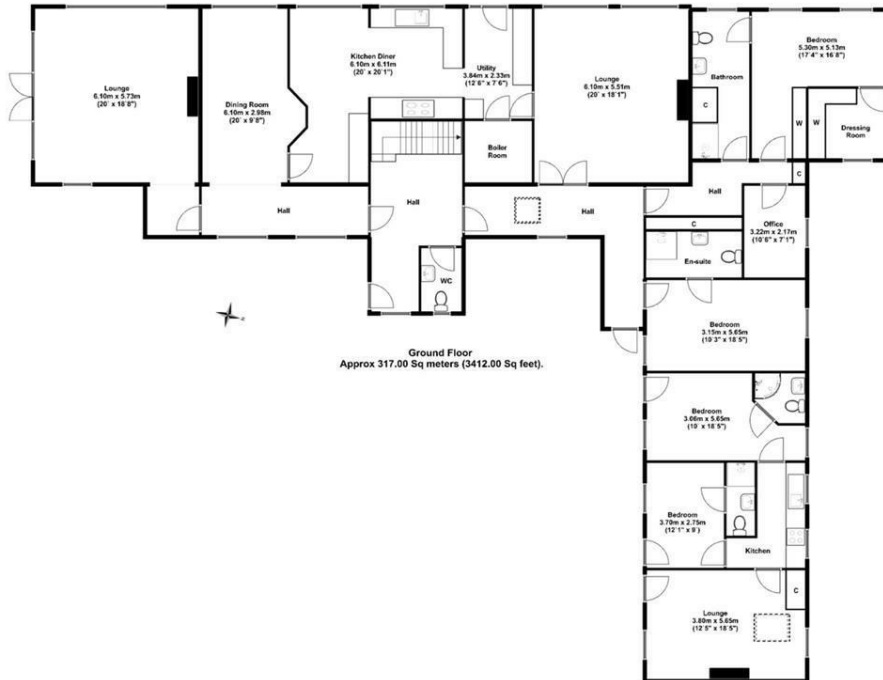




Floor plans



First Floor
Approx 105.00 Sq meters (1130.00 Sq feet).



Ground Floor
Approx 317.00 Sq meters (3412.00 Sq feet).

Energy Efficiency Rating		
	Current	Potential
Very energy efficient - lower running costs		
(92 plus) A		
(81-91) B		
(69-80) C		
(55-68) D		
(39-54) E		
(21-38) F		
(1-20) G		
Not energy efficient - higher running costs		
England & Wales	EU Directive 2002/91/EC	



Unit 3 Mason Court Gillan Way, Penrith 40 Business Park
Penrith
Cumbria
CA11 9GR
01768 881111
sales@brittonestates.co.uk
<https://www.brittonestates.co.uk/>