

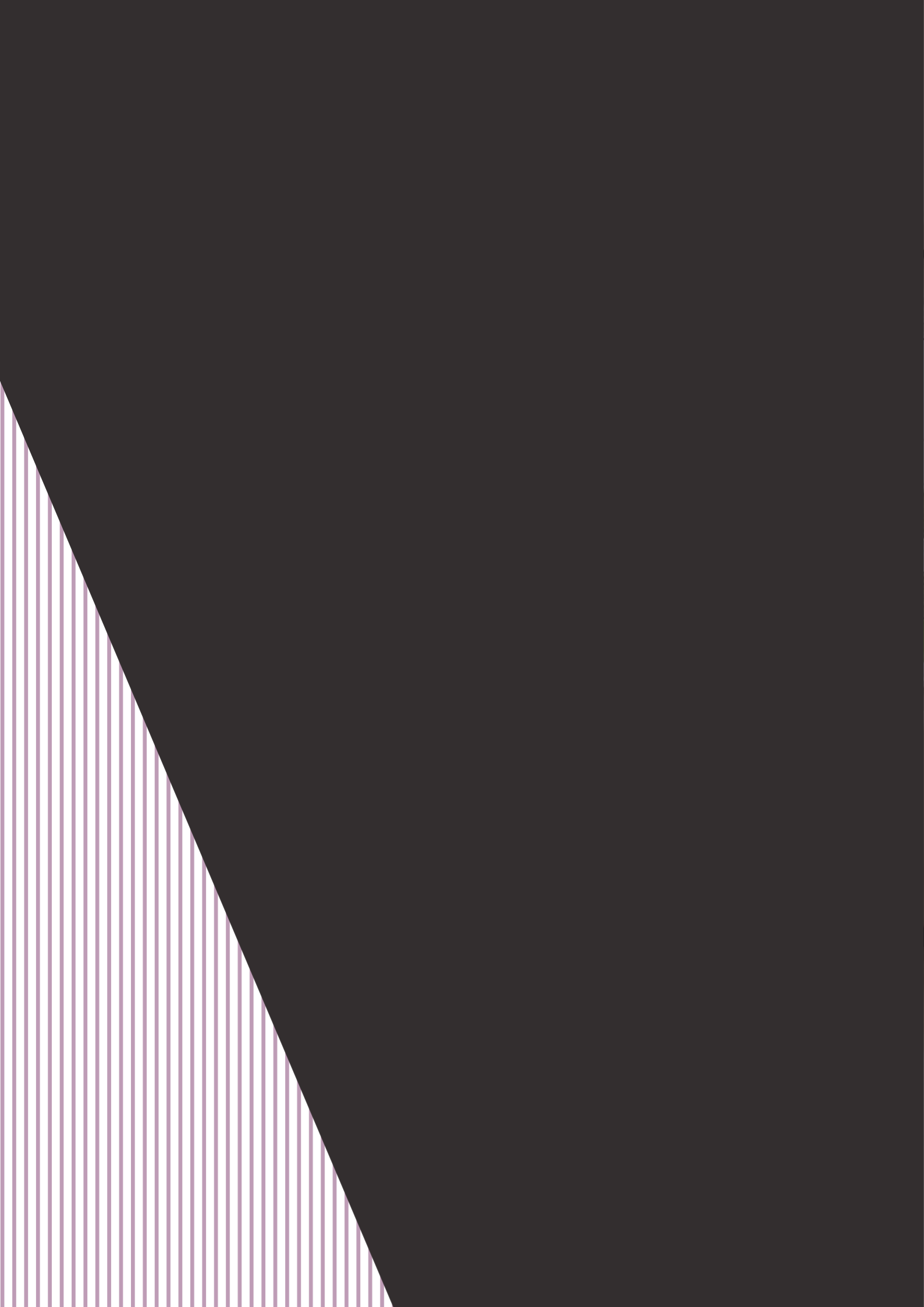
# CH & WH

RENTAL HOMES

An exceptional collection of  
2, 3 & 4 bedroom homes in the  
popular city of Norwich.

[CHWHRENT.CO.UK](http://CHWHRENT.CO.UK)





# Contents

*07*  
WELCOME  
TO CH & WH  
RENTAL HOMES

*08*  
MAKE BTR  
YOUR NEXT  
MOVE

*10*  
DISCOVER  
NORWICH

*12*  
EXCELLENCE  
AS STANDARD

*14*  
UNPARALLELED  
EXPERIENCES

*16*  
LOCAL  
SCHOOLS

*18*  
EFFORTLESS  
CONNECTIONS

*20*  
CRINGLEFORD  
HEIGHTS SITE PLAN

*22*  
WOODLAND HEATH  
SITE PLAN

*24*  
FLOORPLANS

*50*  
SPECIFICATIONS

*Welcome to*

# CH & WH

RENTAL HOMES

At CH & WH Rental Homes, you are at the heart of everything we do. We offer high-quality, contemporary living spaces designed to enhance your lifestyle.

Our brand-new 2, 3, and 4 bedroom homes combine comfort, style, and convenience to create the perfect sanctuary for those looking to take their next step. Each home boasts spacious layouts, with high-quality finishes and appliances, ensuring a living experience that is both luxurious and sustainable.

We are committed to excellence in every aspect of our service. CH & WH Rental Homes ensure hassle-free living and unparalleled support, embodying our dedication to exceeding expectations. With access to a dedicated resident's app, you can communicate directly with local

community managers, submit maintenance requests, and find valuable information about your local area, all at your fingertips.

Whether you're a young professional, a growing family, or seeking a fresh start, we offer the perfect place to live, love, and thrive. Our flexible lease terms, including options for longer durations, ensure you can settle in comfortably no matter how long you choose to stay. Plus, we are pet-friendly, so your furry friends are welcome too. Experience a new standard in rental living, where your needs always come first.



# Make *BTR* your next move

When searching for your next home, the choice between private renting and Build-to-Rent (BTR) can significantly impact your living experience. Our homes are specifically designed for renters, offering modern layouts, high-quality finishes, and state-of-the-art appliances, ensuring a superior living environment tailored to your needs.

With BTR, you benefit from professional management dedicated to prompt maintenance and exceptional customer service, providing a hassle-free and comfortable living experience. Unlike private rentals, which can vary in quality and management, BTR homes offer consistent excellence and reliability.

Flexible leasing options further ensure that you can find a lease term that suits your circumstances, providing the flexibility that private rentals often lack. Collect the keys and enjoy a stress-free, enriched living experience with a focus on your needs and well-being.

*Make the smart move to  
BTR and embrace a lifestyle  
where you come first.*

# Discover *Norwich*

## *A Vibrant Present*

Today, Norwich is a dynamic and thriving city, known for its lively cultural scene, excellent shopping, and diverse culinary offerings. The University of East Anglia adds to the city's vibrancy, fostering a creative and youthful atmosphere.

## *A Hub of Creativity*

Norwich is celebrated as a cultural hub, brimming with artistic and literary energy. From the renowned Norwich Theatre Royal to the vibrant arts festivals that punctuate the calendar year, the city offers a dynamic and inclusive cultural scene that caters to all tastes.



## *Weaving Your Story in Norwich*

Renting a home in our new development means becoming part of Norwich's rich tapestry. Imagine living in a place where history and modernity coalesce, offering you the best of both worlds. Each day, you can walk through centuries-old streets, enjoy contemporary amenities, and participate in the vibrant cultural life.

Here, the history of textiles isn't just a chapter in the past; it's a metaphor for the diverse and interconnected lives of Norwich's residents. By choosing to live in Norwich, you are weaving your own story into the enduring fabric of this extraordinary city. Come and experience how renting a home here pulls together different tapestries of life, creating a unique and enriching living experience in a true cultural hub.



“  
Excellence is  
not a standard,  
*it's a way of life*  
”

*Striving for excellence goes beyond meeting basic requirements.*

It is ubiquitous across every aspect of our culture, operations and homes we provide. By adopting excellence as a way of life, we aim to foster a culture of continuous improvement, innovation, and dedication to exceeding expectations at every opportunity.

# Discover the unparalleled experience of modern living

*Unparalleled living means more than just a place to reside—it's a sanctuary where comfort, connection, and convenience intertwine seamlessly.*

It's waking up each day in a meticulously designed home tailored to your desires, surrounded by a vibrant community that feels like family.

Unparalleled living is the peace of mind knowing that every detail, from maintenance to amenities, is meticulously cared for, leaving you free to savour life's precious moments.

It's a lifestyle defined by warmth, belonging, and the joy of coming home to a place where your well-being is cherished above all else. For every precious moment life has to offer.



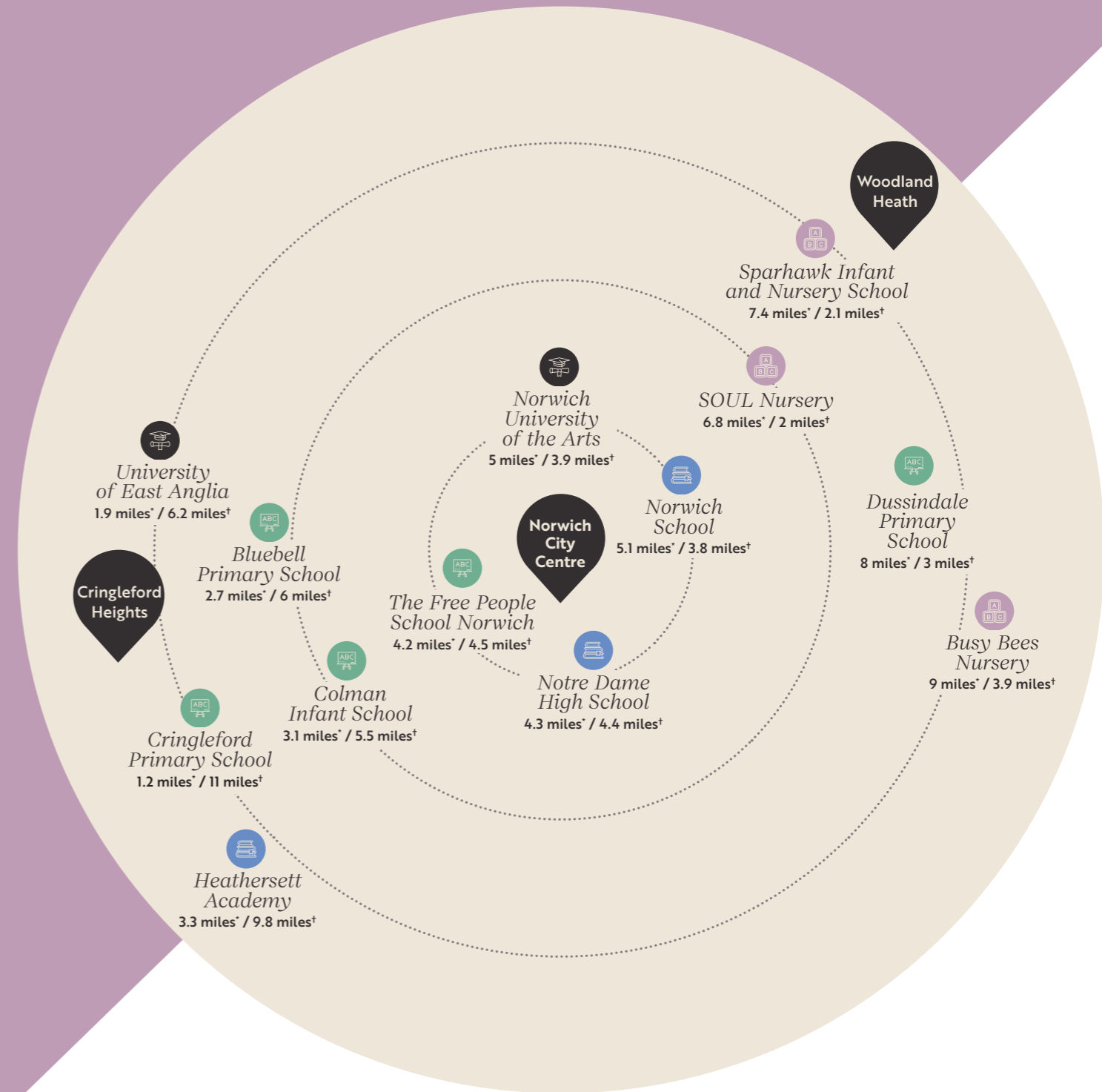




# Local schools

Norwich boasts a diverse array of high-quality educational institutions, ensuring that families have access to excellent schooling options for children of all ages.

Here's a quick look at some notable schools in the area.



Pre-Schools and Nurseries



Primary Schools



Secondary Schools



Higher Education

\*Miles from Cringleford Heights. Distances taken from Google Maps.  
 †Miles from Woodland Heath. Distances taken from Google Maps.

# Effortless connections



Norwich offers excellent travel links, making it easy to reach popular locations both within the region and beyond. Whether you prefer to travel by train, road, or air, Norwich provides a variety of convenient options.

## By Road

Norwich is well-connected by a network of major roads linking you with major cities or with the coast, ensuring smooth travel to various destinations:

- A11** This primary route links Norwich to London and the Midlands via Cambridge.
- A47** Connecting Norwich to Great Yarmouth in the east and Peterborough in the west, the A47 is a crucial corridor for regional travel.
- A140** Running south from Norwich to Ipswich, the A140 provides another important link to the southern region.

## By Bus

Bus route from Woodland Heath (NR13 6NR)

- HOME  
18-minute walk
  - BUS STOP – 5B BUS  
21-minute journey
  - NORWICH TRAIN STATION
- TOTAL TRAVEL TIME:  
39 minutes

Bus route from Cringleford Heights (NR4 7RQ)

- HOME  
1-minute walk
  - BUS STOP – 11A BUS  
20-minute journey
  - TOMBLANDBUSSTOPTOSTATION  
10-minute walk
  - NORWICH TRAIN STATION
- TOTAL TRAVEL TIME:  
31 minutes

## By Train

As a major rail hub, Norwich railway station provides frequent and reliable services to several key destinations:

- LONDON LIVERPOOL STREET**  
Direct trains to London take approximately 1 hour and 50 minutes, making it convenient for business or leisure trips to the capital.
- CAMBRIDGE**  
A direct service to Cambridge takes about 1 hour and 20 minutes, ideal for accessing this historic university city.
- IPSWICH**  
Regular services to Ipswich are available, with a journey time of around 40 minutes.



# Cringleford Heights Siteplan

Unparalleled living means more than just a place to reside—it's a sanctuary where comfort, connection, and convenience intertwine seamlessly.

## 2 bedroom homes

**KENLEY**  
Plots: 345, 346, 347, 393 & 394

## 3 bedroom homes

**MAIDSTONE**  
Plots: 302, 303, 350, 351, 352, 354, 380 & 381

**KINGSVILLE**  
Plots: 342, 343, 348, 349, 375, 376, 391 & 392

**MORESBY**  
Plots: 353, 374, 382 & 390

**DENBY**  
Plots: 300, 301 & 379

**LUTTERWORTH**  
Plots: 356, 378 & 389

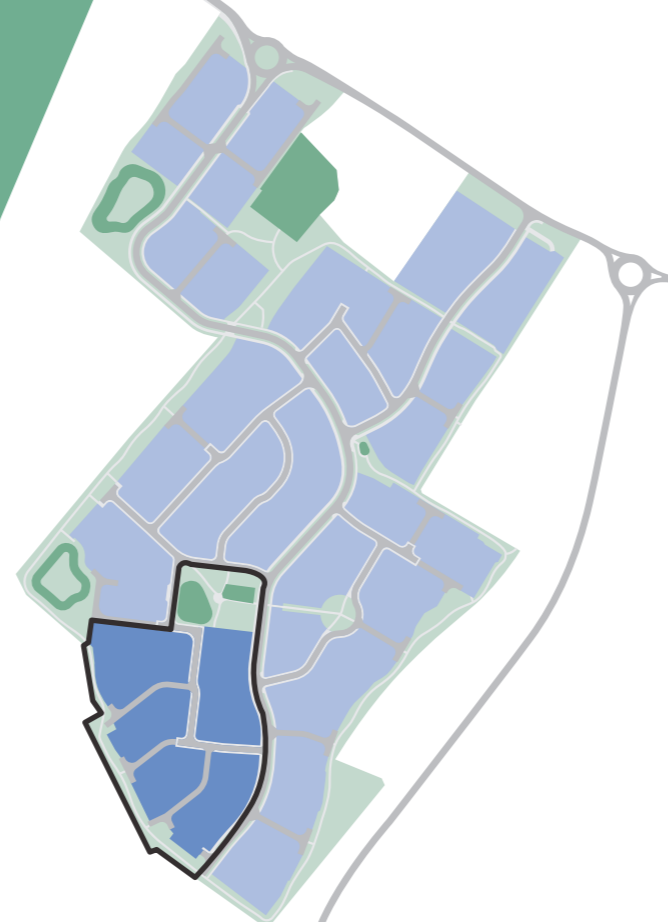
## 4 bedroom homes

**HASKETH**  
Plot: 344

**CHESTER**  
Plots: 341, 355, 357, 358, 359 & 377

**RADLEIGH**  
Plots: 339 & 340

Masterplan



The development layout does not show details of gradients of land, boundary treatments, local authority street lighting or landscaping. It is our intention to build in accordance with this layout. However, there may be occasions when the house designs, boundaries, landscaping and positions of roads and footpaths change as the development proceeds. Please speak to a member of our Sales Team for more details.

# Woodland Heath Siteplan

Unparalleled living means more than just a place to reside—it's a sanctuary where comfort, connection, and convenience intertwine seamlessly.

2 bedroom homes

- **DENFORD**  
Plots: 192, 193, 198 & 199
- **KENLEY**  
Plots: 60, 61, 64, 65, 68, 69, 109, 110, 111, 112, 194, 195, 196 & 197

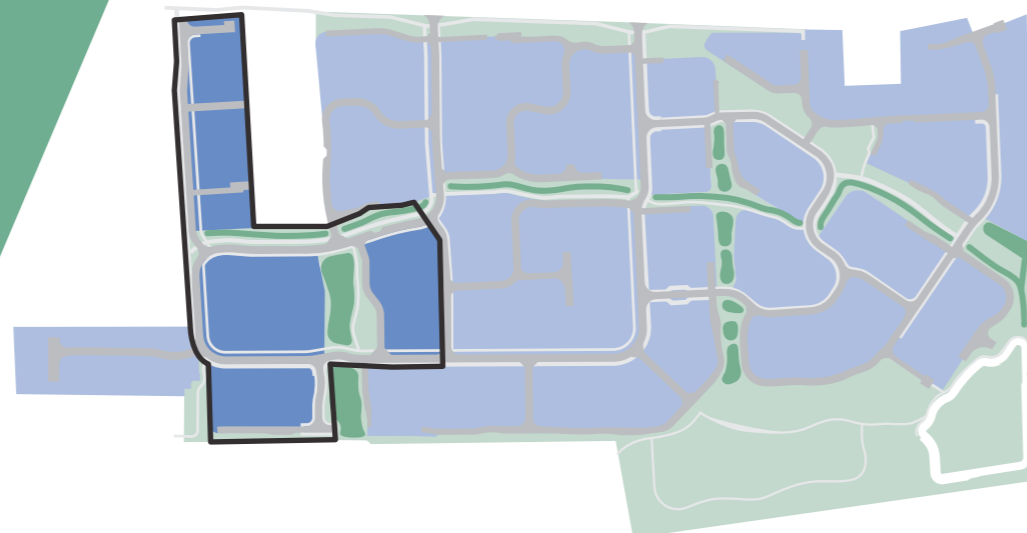
3 bedroom homes

- **MAIDSTONE**  
Plots: 107, 108, 113, 114, 124, 125, 130, 131, 143, 144, 149 & 187
- **KINGSVILLE**  
Plots: 56, 57, 58, 66, 67, 141, 142, 145, 146, 147, 148, 183, 184, 185 & 186
- **MORESBY**  
Plots: 59, 70, 71, 106, 115, 132, 140, 150, 176 & 188
- **LUTTERWORTH**  
Plots: 190 & 191

4 bedroom homes

- **CHESTER**  
Plots: 74, 180 & 189
- **RADLEIGH**  
Plot: 121
- **HEMSWORTH**  
Plots: 72, 73, 117 & 118
- **WOODCOTE**  
Plots: 119, 120, 126, 127, 128 & 129
- **ELLERTON**  
Plots: 62, 63, 177, 178, 181 & 182
- **ALDERNEY**  
Plots: 116, 122, 123 & 179

Masterplan

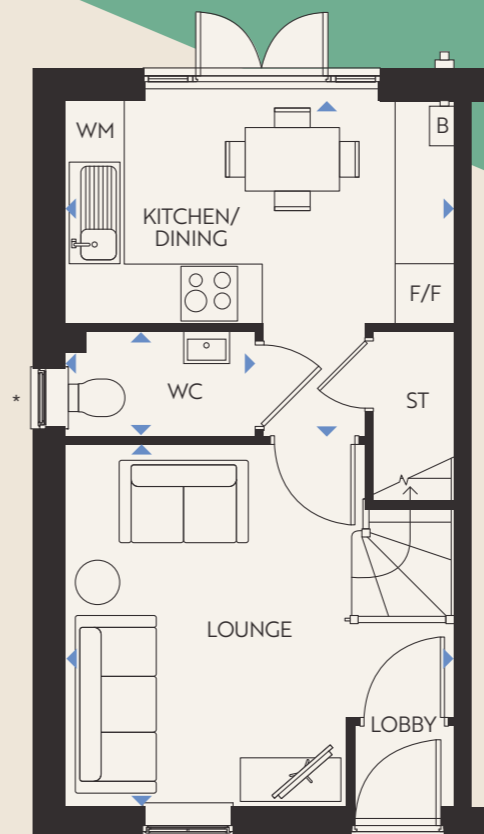


The development layout does not show details of gradients of land, boundary treatments, local authority street lighting or landscaping. It is our intention to build in accordance with this layout. However, there may be occasions when the house designs, boundaries, landscaping and positions of roads and footpaths change as the development proceeds. Please speak to a member of our Sales Team for more details.

# 2 bedroom homes

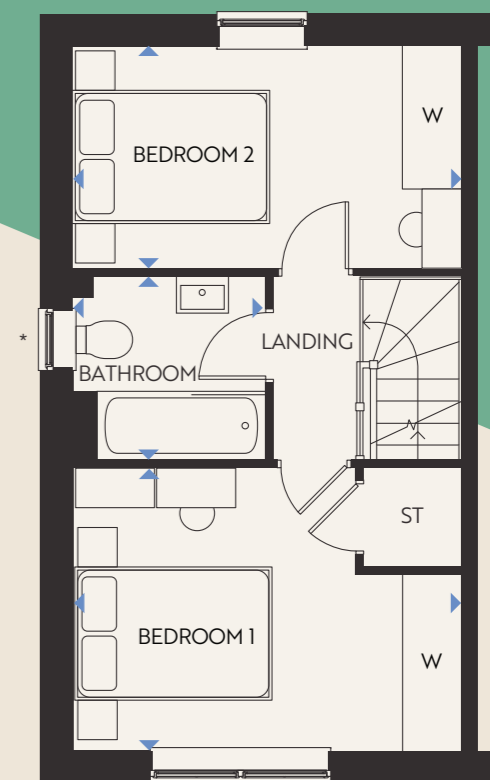
CRINGLEFORD HEIGHTS PLOTS: 345, 346, 347, 393, 394

WOODLAND HEATH PLOTS: 60, 61, 64, 65, 68, 69, 110, 111, 112, 109, 194, 195, 196, 197



*Ground Floor*

- LOUNGE**  
3943 x 3668mm | 12'11" x 12'0"
- KITCHEN/DINING**  
3943 x 3454mm | 12'11" x 11'4"
- WC**  
1888 x 1050mm | 6'2" x 3'5"



*First Floor*

- BEDROOM 1**  
3943 x 2865mm | 12'11" x 9'5"
- BEDROOM 2**  
3943 x 2316mm | 12'11" x 7'7"
- BATHROOM**  
1953x 1853mm | 6'5" x 6'1"

**KEY**

B-Boiler | ST-Store | W-Wardrobe | WC-Cloakroom | WM-Washing Machine space |  
FF - Fridge/Freezer space | ◀▶ - Dimension Location

Floorplans shown are indicative only. The kitchen layout and furniture positions are for indicative purposes only. All dimensions indicated are approximate and should not be relied upon for carpet sizes or items of furniture. The developer reserves the right to make changes to these plans prior to exchange of contracts. For exact plot specification, details of external and internal finishes, dimensions and floorplan differences, please speak to a member of our Sales Team for more details.

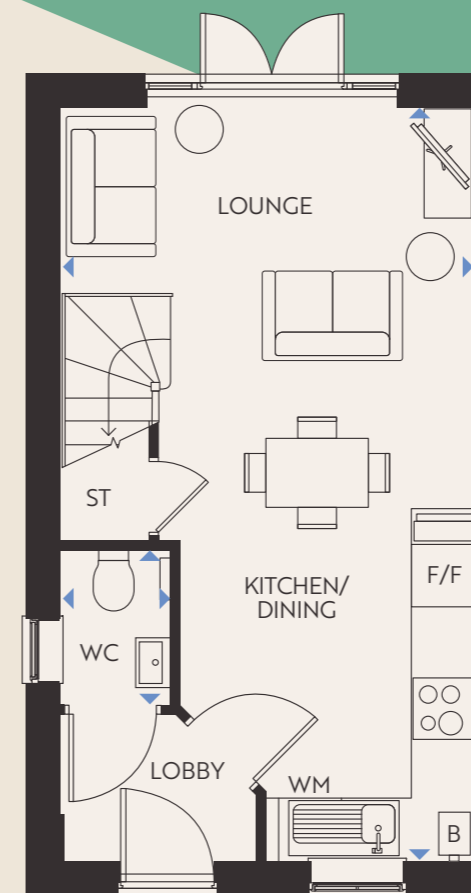
# Kenley

# 2 bedroom homes

WOODLAND HEATH PLOTS: 192, 193, 198, 199



# Denford



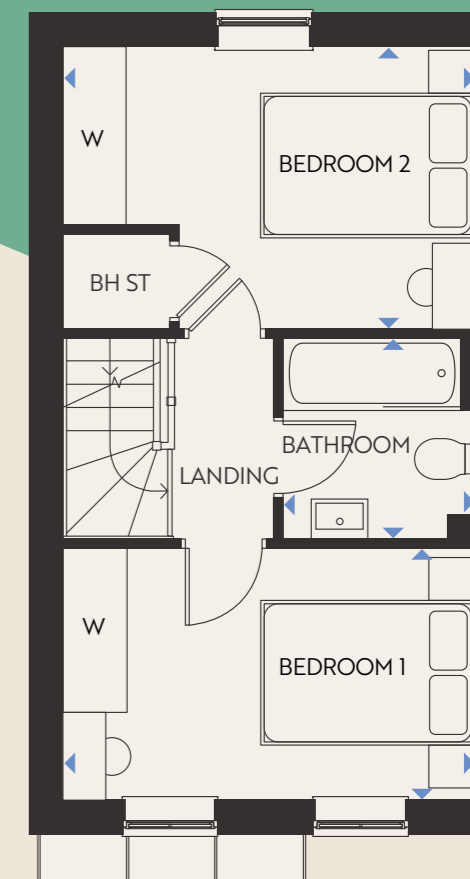
*Ground Floor*

**KITCHEN/DINING/LOUNGE**

3943 x 7210mm | 12'11" x 23'8"

**WC**

1040 x 1490mm | 3'5" x 4'11"



*First Floor*

**BEDROOM 1**

3943 x 2412mm | 12'11" x 7'11"

**BEDROOM 2**

3943 x 2702mm | 12'11" x 8'10"

**BATHROOM**

1840 x 1920mm | 6'0" x 6'4"

**KEY**

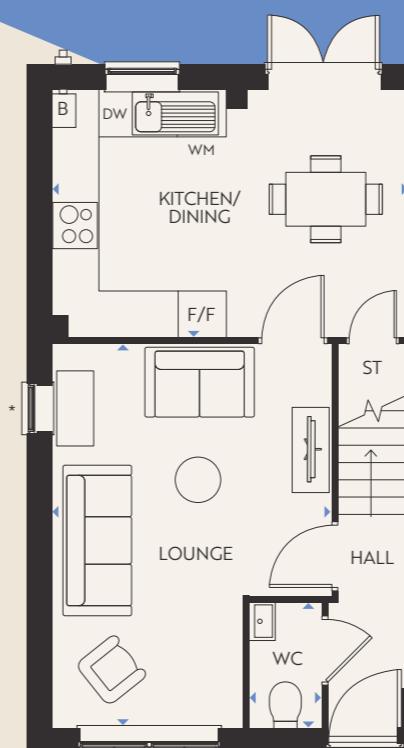
B – Boiler | ST – Store | BH ST – Bulkhead Store | W – Wardrobe | WC – Cloakroom | WM – Washing Machine space | FF – Fridge/Freezer space | ◀▶ – Dimension Location

Floorplans shown are indicative only. The kitchen layout and furniture positions are for indicative purposes only. All dimensions indicated are approximate and should not be relied upon for carpet sizes or items of furniture. The developer reserves the right to make changes to these plans prior to exchange of contracts. For exact plot specification, details of external and internal finishes, dimensions and floorplan differences, please speak to a member of our Sales Team for more details.

# 3 bedroom homes

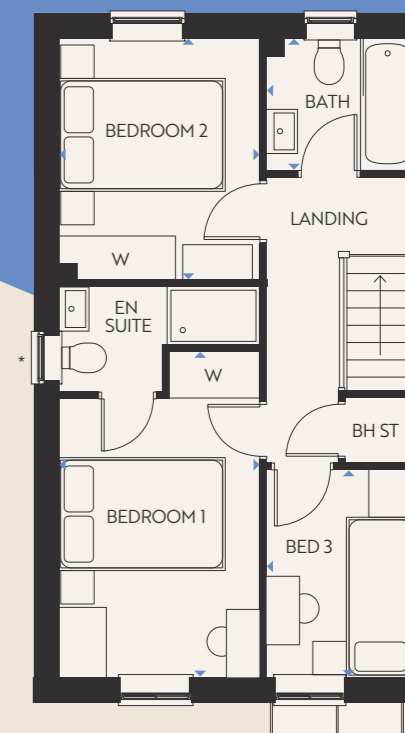
CRINGLEFORD HEIGHTS PLOTS: 302, 303, 350, 351, 352, 354, 380, 381

WOODLAND HEATH PLOTS: 124, 125, 130, 131, 113, 114, 107, 108, 187, 149, 143, 144



Ground Floor

- LOUNGE**  
4598 x 4955mm | 15'1" x 16'3"
- KITCHEN/DINING**  
4598 x 3202mm | 15'1" x 10'6"
- WC**  
935 x 1620mm | 3'1" x 5'4"



First Floor

- BEDROOM 1**  
2593 x 4204mm | 8'6" x 13'10"
- EN SUITE**  
2592 x 1365mm | 8'6" x 4'6"
- BEDROOM 2**  
2592 x 3112mm | 8'6" x 10'3"
- BEDROOM 3**  
1918 x 2676mm | 6'4" x 8'9"
- BATHROOM**  
1918 x 1702mm | 6'4" x 5'7"

**KEY**

B – Boiler | ST – Store | BH ST – Bulkhead Store | W – Wardrobe | WC – Cloakroom | WM – Washing Machine space | FF – Fridge/Freezer space | DW – Dishwasher Space | ◀▶ – Dimension Location

Floorplans shown are indicative only. The kitchen layout and furniture positions are for indicative purposes only. All dimensions indicated are approximate and should not be relied upon for carpet sizes or items of furniture. The developer reserves the right to make changes to these plans prior to exchange of contracts. For exact plot specification, details of external and internal finishes, dimensions and floorplan differences, please speak to a member of our Sales Team for more details.

# Maidstone

# 3 bedroom homes

CRINGLEFORD HEIGHTS PLOTS: 342, 343, 348, 349, 375, 376, 391, 392

WOODLAND HEATH PLOTS: 183, 184, 185, 186, 145, 147, 148, 141, 142, 56, 57, 58, 66, 67



*Ground Floor*      *First Floor*      *Second Floor*

<b>FAMILY/DINING</b> 3936 x 4820mm   12'11" x 15'10"	<b>LOUNGE</b> 3936 x 3630mm   12'11" x 11'11"	<b>BEDROOM 2</b> 3936 x 3508mm   12'11" x 11'6"
<b>KITCHEN</b> 1866 x 3060mm   6'1" x 10'0"	<b>BEDROOM 1</b> 3936 x 3042mm   12'11" x 10'0"	<b>BEDROOM 3</b> 3936 x 3325mm   12'11" x 10'11"
<b>STUDY</b> 1866 x 2749mm   6'1" x 9'0"	<b>EN SUITE</b> 1551 x 2163mm   5'1" x 7'1"	<b>BATHROOM</b> 1761x 1963mm   5'9" x 6'5"
<b>WC</b> 861 x 1649mm   2'10" x 5'5"		

**KEY**

B – Boiler | ST – Store | W – Wardrobe | WC – Cloakroom | WM – Washing Machine space |  
FF – Fridge/Freezer space | ◀▶ – Dimension Location

Floorplans shown are indicative only. The kitchen layout and furniture positions are for indicative purposes only. All dimensions indicated are approximate and should not be relied upon for carpet sizes or items of furniture. The developer reserves the right to make changes to these plans prior to exchange of contracts. For exact plot specification, details of external and internal finishes, dimensions and floorplan differences, please speak to a member of our Sales Team for more details.

# Kingsville

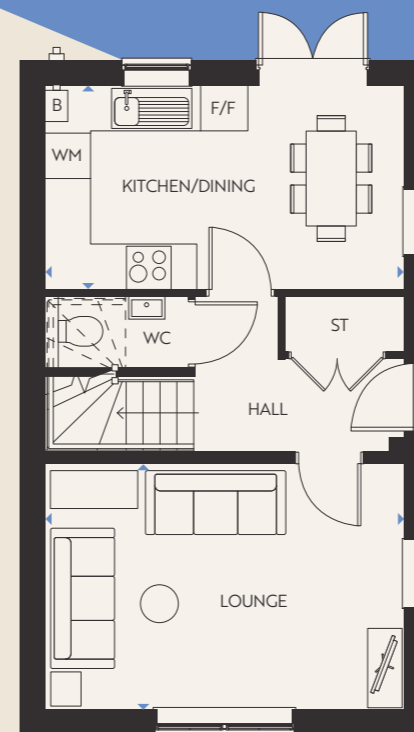


# 3 bedroom homes

WOODLAND HEATH: 176, 132, 115, 106, 188, 150, 140, 59, 70, 71

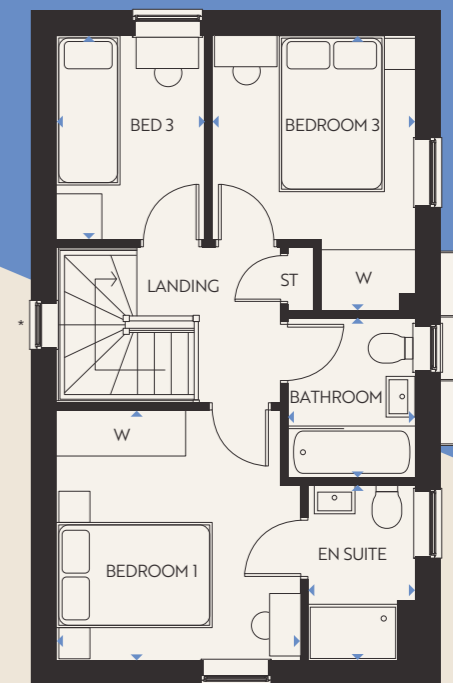


# Moresby



Ground Floor

- LOUNGE**  
4735 x 3250mm | 15'6" x 10'8"
- KITCHEN/DINING**  
4735 x 2933mm | 15'6" x 9'7"
- WC**  
1891 x 945mm | 6'2" x 3'1"



First Floor

- BEDROOM 1**  
3226 x 3312mm | 10'7" x 10'10"
- EN SUITE**  
2322 x 1421mm | 7'7" x 4'8"
- BEDROOM 2**  
2679 x 3628mm | 8'9" x 11'11"
- BEDROOM 3**  
2696 x 1968mm | 8'10" x 6'5"
- BATHROOM**  
2120 x 1688mm | 6'11" x 5'6"

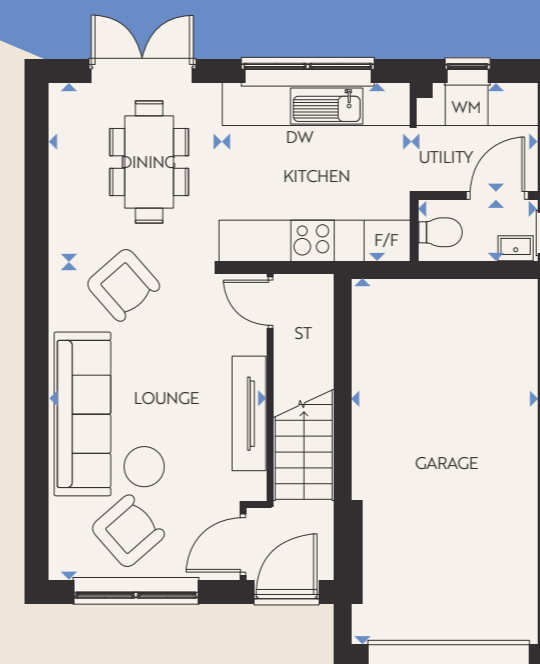
**KEY**

B – Boiler | ST – Store | W – Wardrobe | WC – Cloakroom | WM – Washing Machine space |  
FF – Fridge/Freezer space | ◀▶ – Dimension Location

Floorplans shown are indicative only. The kitchen layout and furniture positions are for indicative purposes only. All dimensions indicated are approximate and should not be relied upon for carpet sizes or items of furniture. The developer reserves the right to make changes to these plans prior to exchange of contracts. For exact plot specification, details of external and internal finishes, dimensions and floorplan differences, please speak to a member of our Sales Team for more details.

# 3 bedroom homes

CRINGLEFORD HEIGHTS: 300, 301, 379



*Ground Floor*

- LOUNGE**  
3072 x 4462mm | 10'1" x 14'8"
- KITCHEN**  
2688 x 2523mm | 8'10" x 8'3"
- DINING**  
2397 x 2523mm | 7'10" x 8'3"
- UTILITY**  
1789 x 1533mm | 5'10" x 5'0"
- WC**  
1701 x 903mm | 5'7" x 3'0"
- GARAGE**  
2663 x 5142mm | 8'9" x 16'10"



*First Floor*

- BEDROOM 1**  
2770 x 4361mm | 9'1" x 14'4"
- EN SUITE**  
2026 x 1412mm | 6'8" x 4'8"
- BEDROOM 2**  
3072 x 3834mm | 10'1" x 12'7"
- BEDROOM 3**  
2722 x 3289mm | 8'11" x 10'9"
- BATHROOM**  
1950 x 1913mm | 6'5" x 6'3"

**KEY**

B – Boiler | ST – Store | W – Wardrobe | WC – Cloakroom | WM – Washing Machine space |  
FF – Fridge/Freezer space | ◀▶ – Dimension Location

Floorplans shown are indicative only. The kitchen layout and furniture positions are for indicative purposes only. All dimensions indicated are approximate and should not be relied upon for carpet sizes or items of furniture. The developer reserves the right to make changes to these plans prior to exchange of contracts. For exact plot specification, details of external and internal finishes, dimensions and floorplan differences, please speak to a member of our Sales Team for more details.

# Denby

# 3 bedroom homes

CRINGLEFORD HEIGHTS PLOTS: 356, 378, 389

WOODLAND HEATH PLOTS: 190, 191



## Ground Floor

**LOUNGE**  
5385 x 3045mm | 17'8" x 10'0"

**KITCHEN/DINING**  
4274 x 5385mm | 14'0" x 17'8"

**WC**  
1028 x 1441mm | 3'4" x 4'9"

## First Floor

**BEDROOM 1**  
3107 x 3599mm | 10'2" x 11'10"

**EN SUITE**  
1648 x 2159mm | 5'5" x 7'1"

**BEDROOM 2**  
3404 x 3163mm | 11'2" x 10'5"

**BEDROOM 3**  
3540 x 2134mm | 11'7" x 7'0"

**BATHROOM**  
2519 x 1958mm | 8'3" x 6'5"

### KEY

B – Boiler | ST – Store | W – Wardrobe | WC – Cloakroom | WM – Washing Machine space |  
FF – Fridge/Freezer space | ◀▶ – Dimension Location

Floorplans shown are indicative only. The kitchen layout and furniture positions are for indicative purposes only. All dimensions indicated are approximate and should not be relied upon for carpet sizes or items of furniture. The developer reserves the right to make changes to these plans prior to exchange of contracts. For exact plot specification, details of external and internal finishes, dimensions and floorplan differences, please speak to a member of our Sales Team for more details.

# Lutterworth

# 4 bedroom homes

CRINGLEFORD HEIGHTS PLOT: 344



Ground Floor	First Floor	Second Floor
<b>LOUNGE</b> 4963 x 3113mm   16'3" x 10'3"	<b>BEDROOM 1</b> 3684 x 3175mm   12'1" x 10'5"	<b>BEDROOM 2</b> 4076 x 3532mm   13'4" x 11'7"
<b>KITCHEN/DINING</b> 4963 x 3175mm   16'3" x 10'5"	<b>EN SUITE</b> 1511 x 2287mm   4'11" x 7'6"	<b>BEDROOM 4</b> 4076 x 3175mm   13'4" x 10'5"
<b>WC</b> 925 x 1923mm   3'0" x 6'4"	<b>BEDROOM 3</b> 3220 x 3175mm   10'7" x 10'5"	<b>SHOWER ROOM</b> 1323 x 2168mm   4'4" x 7'1"
	<b>BATHROOM</b> 1903 x 2038mm   6'3" x 6'8"	

**KEY**  
 B – Boiler | ST – Store | W – Wardrobe | WC – Cloakroom | WM – Washing Machine space |  
 FF – Fridge/Freezer space | TD – Tumble Dryer | ◀▶ – Dimension Location | ☒ – Rooflight

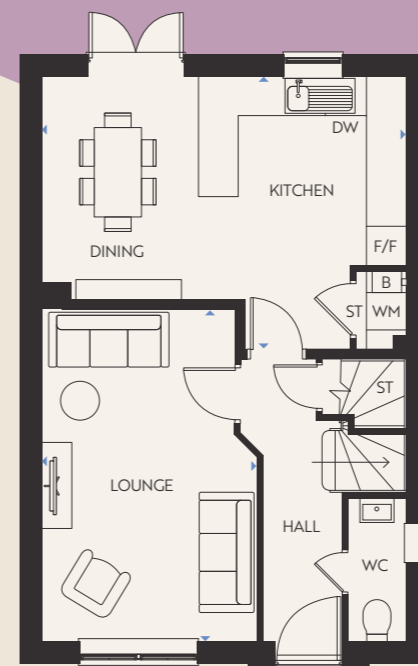
Floorplans shown are indicative only. The kitchen layout and furniture positions are for indicative purposes only. All dimensions indicated are approximate and should not be relied upon for carpet sizes or items of furniture. The developer reserves the right to make changes to these plans prior to exchange of contracts. For exact plot specification, details of external and internal finishes, dimensions and floorplan differences, please speak to a member of our Sales Team for more details.

# Hesketh

# 4 bedroom homes

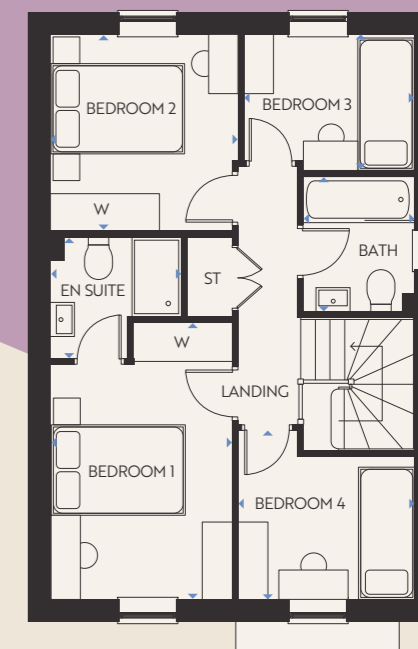
CRINGLEFORD HEIGHTS PLOTS: 341, 355, 357, 358, 359, 377

WOODLAND HEATH PLOTS: 180, 189, 74



**Ground Floor**

- LOUNGE**  
3269 x 5026mm | 10'9" x 16'6"
- KITCHEN/DINING**  
5520 x 4135mm | 18'1" x 13'7"
- WC**  
894 x 2164mm | 2'11" x 7'1"



**First Floor**

- BEDROOM 1**  
2746 x 4205mm | 9'0" x 13'10"
- EN SUITE**  
2058 x 1835mm | 6'9" x 6'0"
- BEDROOM 2**  
2826 x 2986mm | 9'3" x 9'10"
- BEDROOM 3**  
2686 x 2537mm | 8'10" x 8'4"
- BEDROOM 4**  
2606 x 2060mm | 8'7" x 6'9"
- BATHROOM**  
1698 x 2048mm | 5'7" x 6'9"

**KEY**

B – Boiler | ST – Store | W – Wardrobe | WC – Cloakroom | WM – Washing Machine space |  
FF – Fridge/Freezer space | ◀▶ – Dimension Location

Floorplans shown are indicative only. The kitchen layout and furniture positions are for indicative purposes only. All dimensions indicated are approximate and should not be relied upon for carpet sizes or items of furniture. The developer reserves the right to make changes to these plans prior to exchange of contracts. For exact plot specification, details of external and internal finishes, dimensions and floorplan differences, please speak to a member of our Sales Team for more details.

# Chester

# 4 bedroom homes

CRINGLEFORD HEIGHTS PLOTS: 339, 340

WOODLAND HEATH PLOT: 121



# Radleigh



## Ground Floor

- LOUNGE**  
3361 x 5046mm | 11'0" x 16'7"
- KITCHEN/DINING/FAMILY**  
8810 x 3583mm | 26'7" x 11'9"
- UTILITY**  
1558 x 1655mm | 5'1" x 5'5"
- STUDY**  
2273 x 2158mm | 7'5" x 7'1"
- WC**  
884 x 1655mm | 2'11" x 5'5"



## First Floor

- BEDROOM 1**  
3570 x 3858mm | 11'9" x 12'8"
- EN SUITE**  
1452 x 2289mm | 4'9" x 7'6"
- BEDROOM 2**  
3423 x 4335mm | 11'3" x 14'3"
- BEDROOM 3**  
2824 x 3350mm | 9'3" x 11'0"
- BEDROOM 4**  
2973 x 3152mm | 9'9" x 10'4"
- BATHROOM**  
2137 x 1699mm | 7'0" x 5'7"

### KEY

B – Boiler | ST – Store | W – Wardrobe | WC – Cloakroom | WM – Washing Machine space |  
FF – Fridge/Freezer space | TD – Tumble Dryer | ◀▶ – Dimension Location

Floorplans shown are indicative only. The kitchen layout and furniture positions are for indicative purposes only. All dimensions indicated are approximate and should not be relied upon for carpet sizes or items of furniture. The developer reserves the right to make changes to these plans prior to exchange of contracts. For exact plot specification, details of external and internal finishes, dimensions and floorplan differences, please speak to a member of our Sales Team for more details.

# 4 bedroom homes

WOODLAND HEATH PLOTS: 117, 118, 72, 73



## Ground Floor

- LOUNGE**  
4897 x 3310mm | 16'1" x 10'10"
- KITCHEN/DINING/FAMILY**  
5253 x 3297mm | 17'3" x 10'10"
- UTILITY**  
1598 x 2044mm | 5'3" x 6'8"
- WC**  
1598 x 976mm | 5'3" x 3'2"
- GARAGE**  
6025 x 3000mm | 19'9" x 9'10"



## First Floor

- BEDROOM 1**  
4219 x 4007mm | 13'10" x 13'2"
- EN SUITE**  
2010 x 1661mm | 6'7" x 5'5"
- BEDROOM 2**  
3107 x 3775mm | 10'2" x 12'5"
- BEDROOM 3**  
3566 x 3169mm | 11'8" x 10'5"
- BEDROOM 4**  
3126 x 3123mm | 10'3" x 10'3"
- BATHROOM**  
2151 x 1901mm | 7'1" x 6'3"

### KEY

B – Boiler | ST – Store | W – Wardrobe | WC – Cloakroom | WM – Washing Machine space |  
FF – Fridge/Freezer space | ◀▶ – Dimension Location

Floorplans shown are indicative only. The kitchen layout and furniture positions are for indicative purposes only. All dimensions indicated are approximate and should not be relied upon for carpet sizes or items of furniture. The developer reserves the right to make changes to these plans prior to exchange of contracts. For exact plot specification, details of external and internal finishes, dimensions and floorplan differences, please speak to a member of our Sales Team for more details.

# Hemsworth

# 4 bedroom homes

WOODLAND HEATH PLOTS: 126, 127, 128, 129, 119, 120



## Ground Floor

**LOUNGE/DINING**  
5845 x 4608mm | 19'2" x 15'1"

**KITCHEN**  
4211 x 2481mm | 13'10" x 8'2"

**WC**  
1726 x 878mm | 5'8" x 2'11"

## First Floor

**BEDROOM 2**  
4414 x 2608mm | 14'6" x 8'7"

**BEDROOM 3**  
3722 x 2608mm | 12'3" x 8'7"

**BEDROOM 4**  
2779 x 1912mm | 9'1" x 6'3"

**BATHROOM**  
2112 x 1912mm | 6'11" x 6'3"

## Second Floor

**BEDROOM 1**  
5650 x 3482mm | 18'6" x 11'5"

**EN SUITE**  
1926 x 2486mm | 6'4" x 8'2"

**DRESSING AREA**  
2594 x 2574mm | 8'6" x 8'5"

### KEY

B – Boiler | ST – Store | W – Wardrobe | WC – Cloakroom | WM – Washing Machine space |  
FF – Fridge/Freezer space | TD – Tumble Dryer | ◀▶ – Dimension Location | ☒ – Rooflight

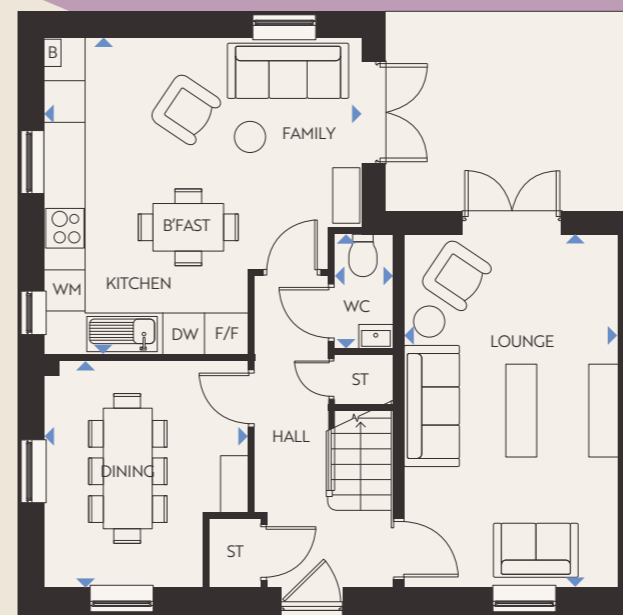
Floorplans shown are indicative only. The kitchen layout and furniture positions are for indicative purposes only. All dimensions indicated are approximate and should not be relied upon for carpet sizes or items of furniture. The developer reserves the right to make changes to these plans prior to exchange of contracts. For exact plot specification, details of external and internal finishes, dimensions and floorplan differences, please speak to a member of our Sales Team for more details.

# Woodcote



# 4 bedroom homes

WOODLAND HEATH PLOTS: 123, 179, 122, 116



## Ground Floor

**LOUNGE**  
5148 x 3110mm | 16'11" x 10'2"

**KITCHEN/FAMILY/BREAKFAST**  
4623 x 4603mm | 15'2" x 15'1"

**DINING**  
3307 x 2972mm | 10'10" x 9'9"

**WC**  
1675 x 853mm | 5'6" x 2'10"

## First Floor

**BEDROOM 1**  
4623 x 3104mm | 15'2" x 10'2"

**EN SUITE**  
2075 x 1191mm | 6'10" x 3'11"

**BEDROOM 2**  
4523 x 3115mm | 14'10" x 10'3"

**BEDROOM 3**  
3724 x 3115mm | 12'3" x 10'3"

**BEDROOM 4**  
2275 x 2163mm | 7'6" x 7'1"

**BATHROOM**  
2075 x 1702mm | 6'10" x 5'7"

### KEY

B – Boiler | ST – Store | W – Wardrobe | WC – Cloakroom | WM – Washing Machine space |  
FF – Fridge/Freezer space | ◀▶ – Dimension Location

Floorplans shown are indicative only. The kitchen layout and furniture positions are for indicative purposes only. All dimensions indicated are approximate and should not be relied upon for carpet sizes or items of furniture. The developer reserves the right to make changes to these plans prior to exchange of contracts. For exact plot specification, details of external and internal finishes, dimensions and floorplan differences, please speak to a member of our Sales Team for more details.

# Alderney



# Specifications

## Kitchen

- A range of modern kitchens
- Integrated stainless steel appliances
- Splashback in keeping with worktop and full height protective screen between cooker and extractor
- Stainless steel sink with deck mixer taps
- Soft close hinges to all units

## Finishes

- Luxury vinyl plank flooring throughout
- Abingdon carpet to stairs, landings and bedrooms
- White PVCu windows and double doors
- Almond white finished walls throughout
- White satinwood joinery finish throughout

## Bathroom

- Glass shower screen
- Chrome plated towel rail, above radiator where possible
- Mirror above basin where possible
- Wash hand basin with clicker waste
- Full height tiling around bath/shower
- 300mm tiling over sink
- Shaver point to bathroom

## Heating & Electrical

- Dual zone central heating to improve energy-efficiency and comfort
- Combi Boiler
- Fibre broadband available
- Carbon monoxide battery powered alarm
- 2 linked main operating smoke detectors
- Solar panels to south-facing roofs

# Smart *Lock*

The key to *modern* living

Your new front door will be equipped with a state-of-the-art Smart Lock from Unloc, allowing you to lock and unlock your door with a Bluetooth-enabled device. Enjoy the convenience and security of your new Smart Lock, designed to make your life easier.



## *Getting Started*

Before you move in, we'll send you a Bluetooth pass via your mobile phone number. Each person listed on the tenancy agreement will receive their own pass, ensuring easy access for everyone.



## *How it Works*

From the outside, the Smart Lock looks like a standard lock. Inside, you'll find a circular, motorised locking solution that operates without a key. To lock or unlock the door, simply use your Bluetooth-enabled device.



## *Traditional Key Access*

Prefer a traditional key? No problem. You'll also receive a physical key that works like any standard lock. The inside mechanism functions like a typical thumb turn lock, allowing you to engage or disengage the lock with a simple turn.

CH & WH  
RENTAL HOMES

CHWHRENT.CO.UK

