



the  
**ANDERSON**  
Group exp



# Grove Cottage, Robins Lane, Reynoldston, Gower, Swansea, SA3 1AA

Offers Over £800,000

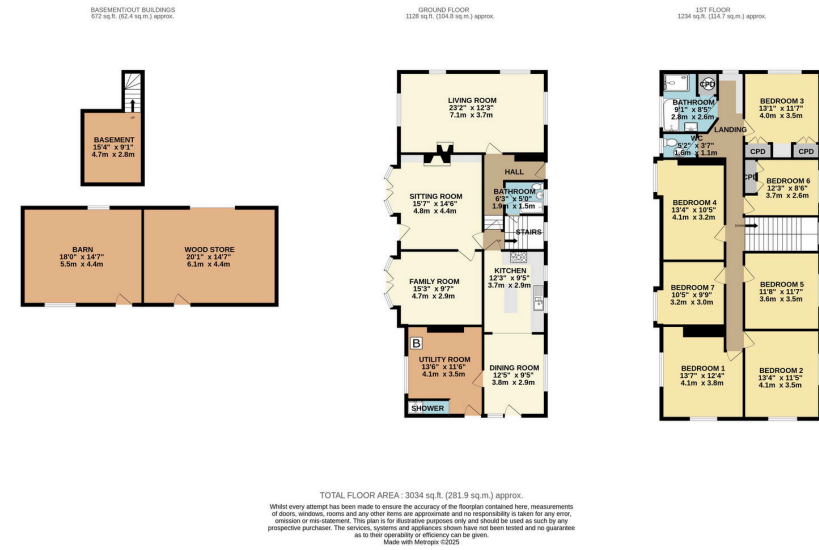
🛏 7 🚿 2 🚗 3





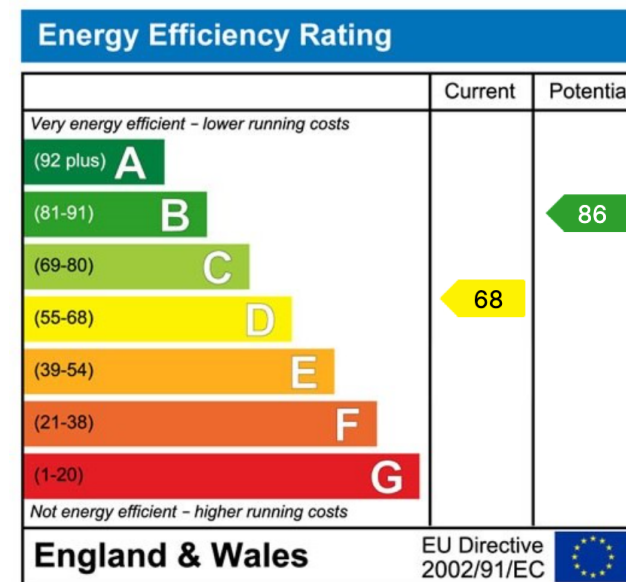
- Beautifully Presented Seven Bedroom Detached Home
- Two Bathrooms, Shower and Separate WC
- XX kW Solar Panels
- Ideal for Family Home or Multi-Generational Living
- Bishopston Comprehensive School Catchment
- Three Flexible Reception Rooms with Two Log Burning Stoves
- Generous Gardens of Over Half an Acre
- Development Opportunity of Out-Buildings
- Access to Countryside Walks, Local Pub & Post Office Shop
- Please Quote JH001 when Enquiring





Beautifully presented and substantial seven-bedroom detached family home situated in the heart of the highly sought-after village of Reynoldston, offering exceptional and versatile accommodation. This impressive property blends character features with generous living space, making it ideal for large families, multi-generational living, or those seeking a village home.

Accommodation briefly comprises: three flexible reception rooms, kitchen, dining room, bathroom, utility room with shower room on the ground floor, with seven bedrooms, bathroom and separate WC to the first floor. Benefitting from a basement and outbuildings. Externally, the property enjoys over half an acre of generous grounds and a superb village setting close to local amenities and countryside walks.



01792 805075

Swansea, Mumbles & Cower

sales@melanieanderson.co.uk