



62 Llwynmawr Close, Sketty

Offers Over £375,000

🛏 4 🚽 1 🛋 2

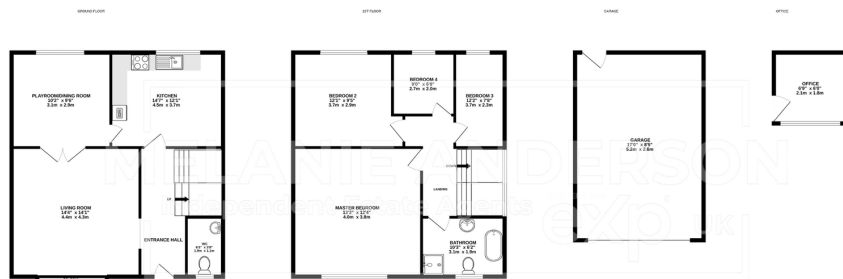


- Move-in Ready Family Home • Spacious Four-Bedrooms
- Modern Kitchen & Bathroom • Ground Floor W/C
- Bright Living Room and Flexible Living Spaces • Driveway and Garage
- Wrap Around Garden • Stunning Sea Views
- External Insulated Office with Power. • Fantastic Location Close to All Local Amenities



The ground floor offers a bright and breathable living room with a bay window overlooking the front garden, a modern W/C, a versatile playroom/Dining room, and a spacious modern kitchen with a contemporary finish. Upstairs, you'll find a modern four-piece family bathroom and four generous bedrooms, with the master boasting partial sea views.

Set in a highly sought-after location with excellent school catchments and just a short distance from Swansea University, Singleton Hospital, and Swansea City Centre, this house has



TOTAL FLOOR AREA: 1248sq.ft. (115.9 sq.m.) approx.

Whilst every attempt has been made to ensure the accuracy of the floorplan contained here, measurements of doors, windows, rooms and any other items are approximate and no responsibility is taken for any error, omission or mis-statement. This plan is for illustrative purposes only and should be used as such by any prospective purchaser. The services, systems and appliances shown have not been tested and no guarantee is given as to their operability or efficiency can be given.

Made with Metropix ©2025

