




Orchard Cottage, Rhossili, Swansea, SA3 1PJ

Offers Over £400,000

 3  2  1



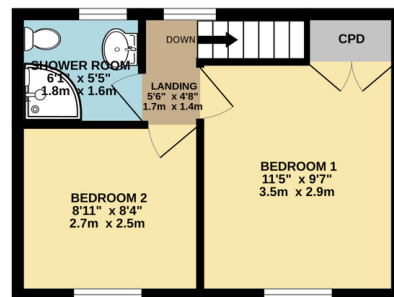
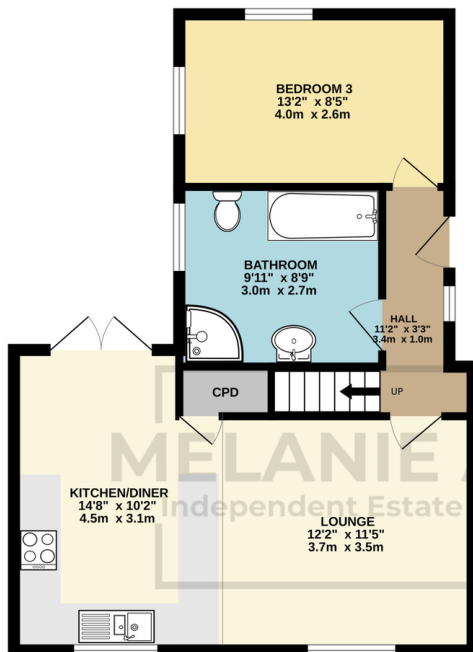
- Charming Three Bedroom Detached Cottage
- Ground Floor Bathroom & First Floor Shower Room
- South Facing Rear Patio Area
- No Onward Chain
- Ideal Family Home/Holiday Home
- Open Plan Lounge, Kitchen & Dining Area
- Flexible Third Bedroom on Ground Floor
- Driveway with Parking for Two Cars
- Electric Car Charging Point
- Easy Access to Rhossili Beach and The Worm's Head



GROUND FLOOR
542 sq.ft. (50.4 sq.m.) approx.



1ST FLOOR
253 sq.ft. (23.5 sq.m.) approx.



TOTAL FLOOR AREA : 795 sq.ft. (73.9 sq.m.) approx.

Whilst every attempt has been made to ensure the accuracy of the floorplan contained here, measurements of doors, windows, rooms and any other items are approximate and no responsibility is taken for any error, omission or mis-statement. This plan is for illustrative purposes only and should be used as such by any prospective purchaser. The services, systems and appliances shown have not been tested and no guarantee as to their operability or efficiency can be given.
Made with Metropix ©2025

Charming three-bedroom detached property located in the village of Middleton. Orchard Cottage benefits from an open plan lounge/kitchen/diner, family bathroom and third bedroom on the ground floor. The first floor briefly comprises of two bedrooms and a shower room. Outside there is a fully enclosed low-maintenance Indian sandstone patio area and tarmac driveway. Situated in the quiet village of Middleton, this property offers easy access to scenic coastal walks and a friendly village community. Just minutes from Rhossili Beach, Worm's Head, Mewslade Bay and the coastal path, with the Rhossili Downs also close by. Well-suited for families or holiday letting, it's a rare opportunity in a sought-after location. Freehold. Viewing is highly recommended. No chain.