

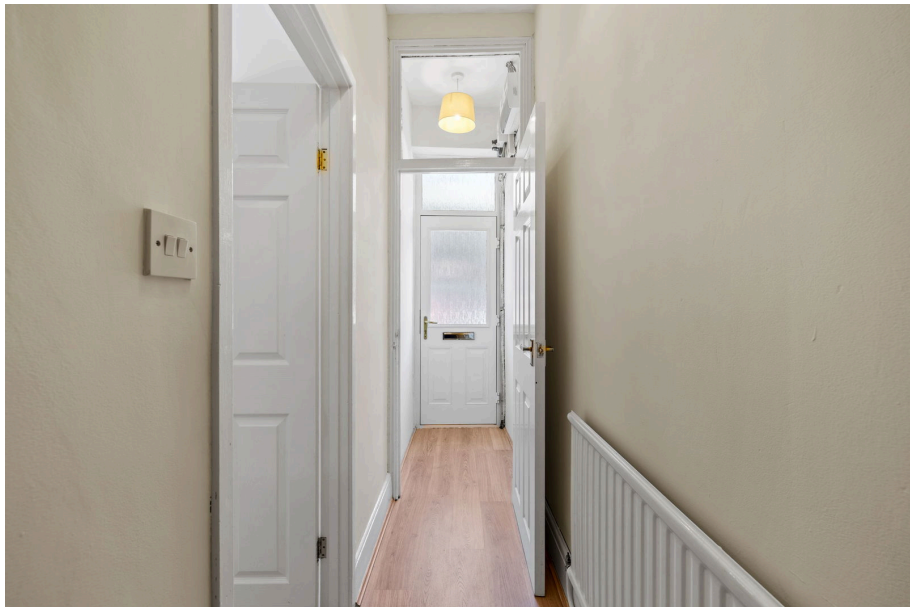


14 Gerald Street,
Offers In Region Of £120,000

🛏 3 🚿 1 🛋 2



- No Onward Chain
- Bright Open Living Areas
- Modern Kitchen
- Move-In Ready Condition
- Close to Local Schools and Shops
- Spacious Three-Bedrooms
- Separate Living and Dining Areas
- Four-Piece Bathroom Suite
- Private Courtyard Garden
- Excellent Investment Opportunity



Offered with no onward chain, this well-maintained three-bedroom terraced home is ideally located just a short walk from Swansea city centre, with local schools and shops nearby. It's a fantastic option for families, first-time buyers or investors.

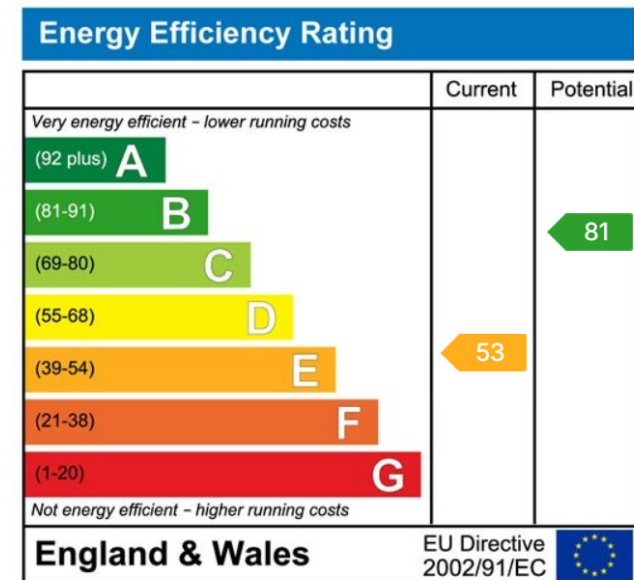
The property offers plenty of space throughout, featuring a bright living room, a separate dining area, a modern kitchen and a four-piece bathroom. Upstairs, there are three generously sized bedrooms, all with built-in storage for added convenience.

Neat, clean, and move-in ready, this home also holds great potential as a family home or a rental property. Homes like this don't stay on the market for long.

Viewings are highly recommended.



TOTAL FLOOR AREA: 3000sq ft (281.0 sq m) (approx.)
While every effort has been made to ensure the accuracy of the floor plan, the agent does not accept any liability for errors or omissions. The floor plan is for information only and should not be used as a basis for any decision. The agent does not accept any liability for errors or omissions. The floor plan is for information only and should not be used as a basis for any decision.



01792 805075

Swansea, Mumbles & Cower

sales@melanieanderson.co.uk