



Your Logo

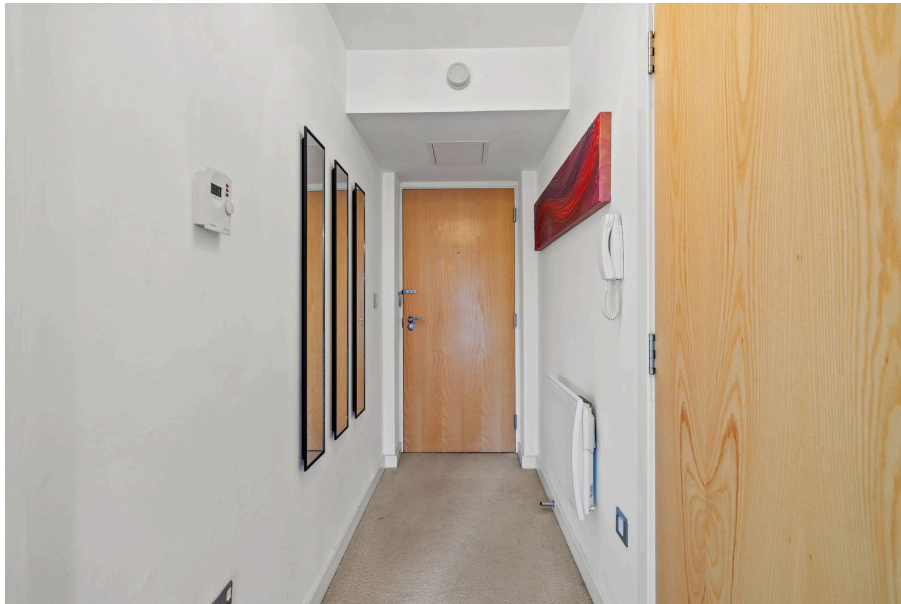
Royal Sovereign Apartments, Phoebe Road, Pentrechwyth, Swansea, SA1 7FH

Offers Over £90,000

🛏 1 🚿 1 🚿 1

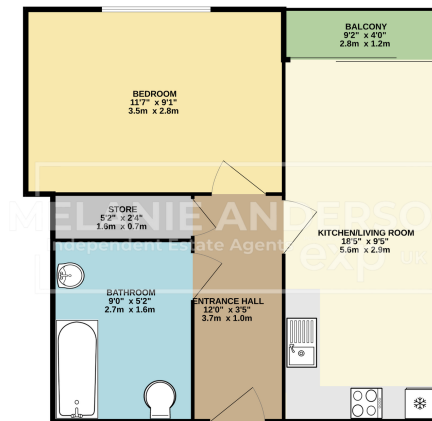


- Well-Presented Third-Floor Apartment In The Sought-After Copper Quarter
- Bright Double Bedroom
- Private Balcony With Relaxing Views Over The River Tawe
- Prime Location Near The Liberty Stadium And Morfa Retail Park
- Ideal For First-Time Buyers
- Spacious Open-Plan Lounge and Kitchen
- Modern Three-Piece Bathroom Suite
- Allocated Parking Space
- Excellent Transport Links To The M4 And Swansea City Centre
- Great Buy-To-Let Opportunity





GROUND FLOOR
398 sq.ft. (37.0 sq.m.) approx.

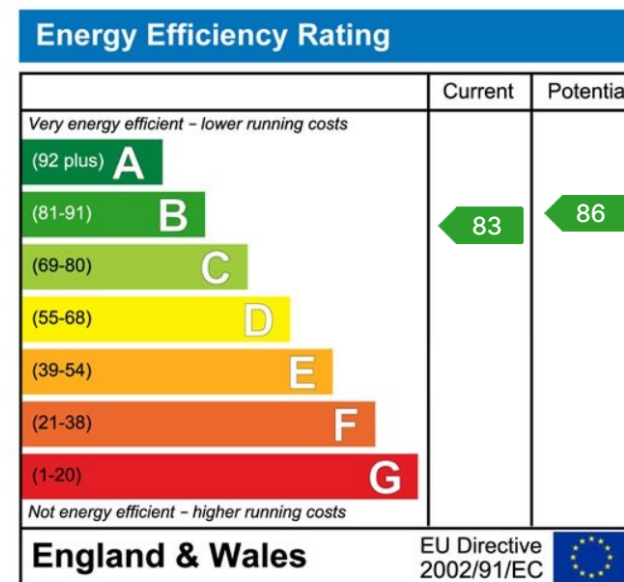


TOTAL FLOOR AREA: 398 sq.ft. (37.0 sq.m.) approx.
While every effort has been made to ensure the accuracy of the floor plan, it is not a guarantee. It is recommended that you check the contract you have with your current agent.

This well-presented third-floor apartment is located in Swansea's popular Copper Quarter development. The accommodation comprises an entrance hallway, an open-plan lounge and kitchen, a double bedroom, and a modern three-piece bathroom. Externally, the property benefits from a balcony, which is perfect for relaxing overlooking the River Tawe. A key advantage of this apartment is that it includes an allocated parking space, which not all apartments in this block benefit from.

Ideally situated close to the Liberty Stadium, Morfa Retail Park, and offering excellent transport links to the M4 and Swansea City centre, this apartment is perfect for first-time buyers or as a buy-to-let investment.

Viewing is highly recommended to see the full potential of this



01792 805075

Swansea, Mumbles & Cower

sales@melanieanderson.co.uk