



Your Logo

15 Tonnant Road, Pentrechwyth

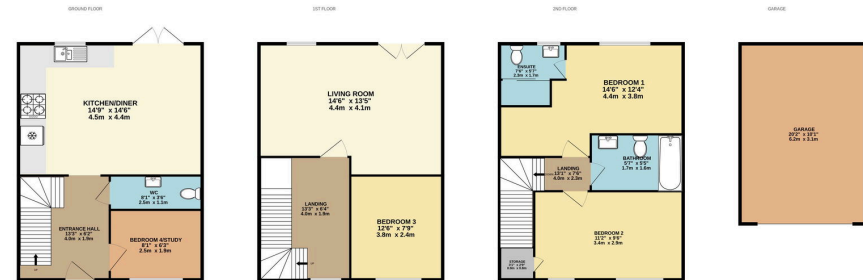
Offers Over £250,000

🛏 4 🚿 2 🛋 2



- Immaculately Presented 4 Bedroom Townhouse
- Bright Open-plan Kitchen/ Diner
- Private Enclosed Rear Garden
- Popular Copper Quarter Development
- Scenic Riverside Walks and Nearby Cycle Path
- Two Modern Bathrooms Plus Ground Floor W/C
- Flexible Living Over Three Spacious Floors
- Off-road Parking and Single Garage
- Close to Morfa Shopping Centre, Liberty Stadium, and Major Transport Links
- Freehold Property

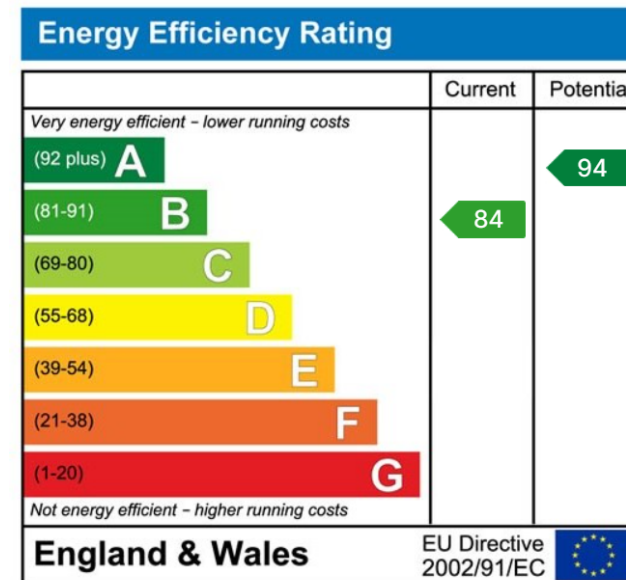




TOTAL FLOOR AREA: 1151sq.ft. (106.9 sq.m.) approx.
While every attempt has been made to ensure the accuracy of the figures contained herein, measurements of doors, windows, floors and any other items are approximate and no responsibility is taken for any error or omission in this statement. The plan is for illustrative purposes only and should be used as such by any prospective purchaser. The services, systems and appliances shown have not been tested and no guarantee as to their operability or efficiency can be given.
Made with Metrepro C025

Immaculately presented 3/4 bedroom townhouse located in the sought-after Copper Quarter development, offers flexible living across three spacious floors. The property features a bright open-plan kitchen/diner, two modern bathrooms, a ground floor W/C, and a versatile additional room that can be used as a fourth bedroom, home office, or second reception space. Further benefits include off-road parking, a single garage, and a private enclosed rear garden.

Just a stone's throw from the River Tawe, residents can enjoy scenic walks and access to the adjacent cycle path, making this an ideal location for families. Perfectly positioned near Morfa Shopping Centre, the Liberty Stadium, and within easy reach of Singleton Hospital, Swansea University, and the M4, this home offers both comfort and convenience.



01792 805075

Swansea, Mumbles & Cower

sales@melanieanderson.co.uk