



Grenfell Town, Bonymaen, Swansea, SA1 7AE

Offers Over £120,000

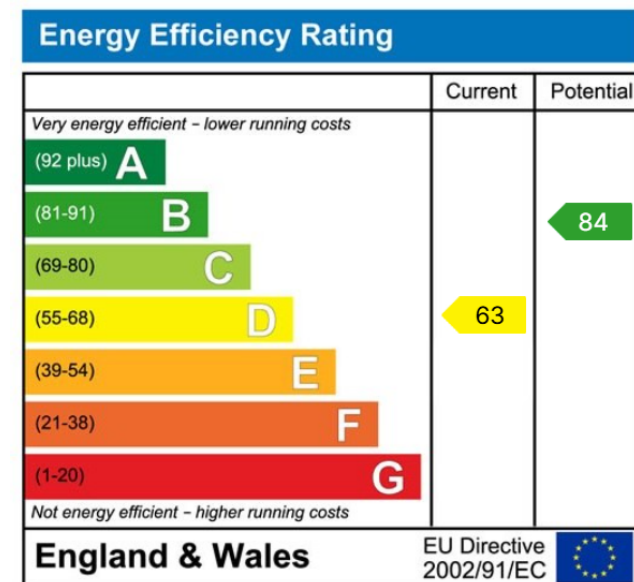
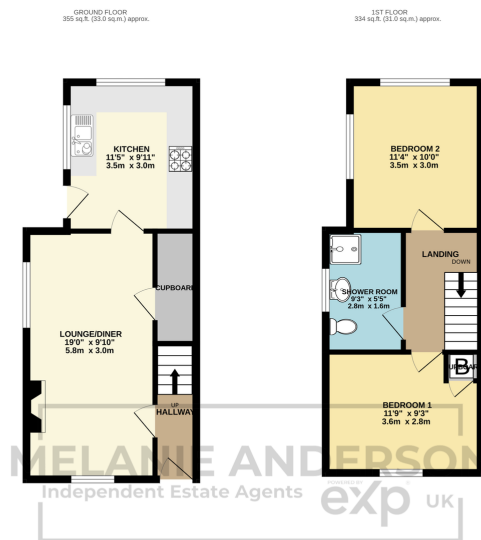
🛏 2 🍳 1 🚗 1



- End of Terrace Two Bedroom • Newly Fitted Modern Kitchen Property
- Open Plan Lounge/Diner
- Freehold
- Basement Accessed from Courtyard Garden
- Situated within Easy Access to Liberty Stadium, Morfa Retail Park & M4 Corridor
- Nearby Local Shops & Amenities
- Potential for Off-Road Parking
- Ideal for FTB or Investment



Beautifully presented two bedroom end of terrace property situated in a convenient location in Bon-y-maen. Accommodation comprising; entrance hallway, open plan lounge/diner and a newly renovated kitchen to the ground floor with two double bedrooms and a shower room to the first floor. Benefiting from a basement, enclosed outside space and potential for off-street parking. Located adjacent to Kilvey Hill Community Woodland and within walking distance of Liberty Stadium and Morfa Retail Park, with easy access to the M4. Freehold. Ideal FTB or investment property. Viewing comes highly recommended.



01792 805075

Swansea, Mumbles & Cower

sales@melanieanderson.co.uk