



Belvedere Close, Kittle, Swansea, SA3 3LA

Offers Over £400,000

🛏 4 🍳 2 🚗 1

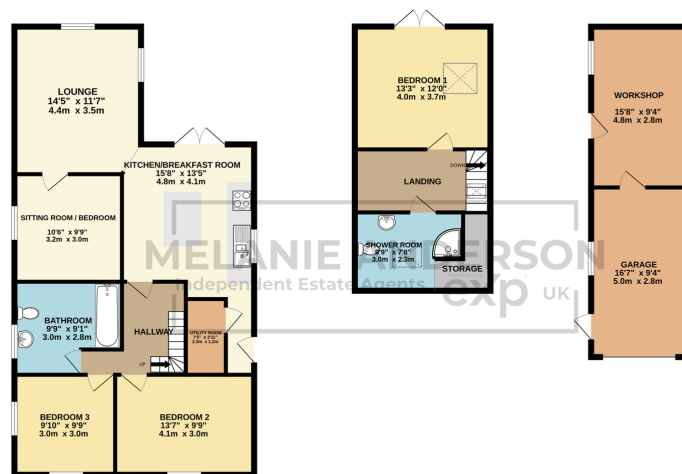


- Three/Four Bedroom Detached Dormer Bungalow
- Recently Modernised Throughout
- Beautiful Enclosed Rear Garden with Lovely Woodland Aspect
- Off Road Parking
- Easy access to M4, Gower Peninsula, Swansea City Centre & Popular Beaches
- Flexible Accommodation
- Spacious Kitchen / Breakfast Room
- Good Sized Garage & Workshop
- Bishopston Comprehensive Catchment
- Quiet Cul-de-sac Location

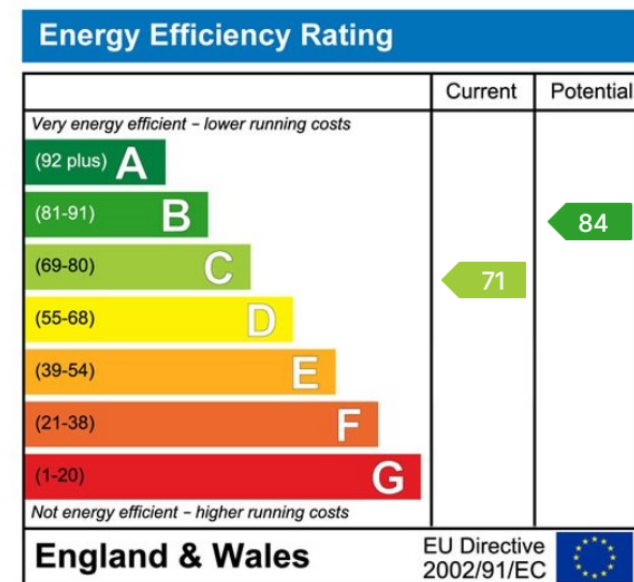


Beautifully presented substantial three/four bedroom dormer bungalow, situated in a quiet cul-de-sac location in the highly sought after village of Kittle. Accommodation briefly comprising; an open plan kitchen/breakfast room, one reception room, three bedrooms and a bathroom to the ground floor, with a bedroom and shower room to the first floor. Benefiting from off road parking, plus a good sized garage with a workshop to rear offering potential for home office/gym. Further benefiting from a private rear garden backing onto the Bishopston Valley, providing foot access to Pwll Du beach in about 45 mins. Situated in a fantastic location, you'll have easy access to the Gower Peninsula, Mumbles, Rhosilli and Swansea City Center, with many popular beaches like Caswell, Rotherlade and Brandy Cove. Within the Bishopston Comprehensive catchment, making this an ideal

far
ap



TOTAL FLOOR AREA: 1541 sq.ft. (142.2 sq.m.) approx.
 While every effort has been made to ensure the accuracy of the figures contained herein, measurements of rooms, walls, floors, ceilings and other parts are approximate and no responsibility is taken for any inaccuracy or mis-statement. This plan is for information purposes only and should be used as such by any prospective purchaser. The actual layout and appearance of the property may vary from the plan shown and no guarantee as to their accuracy or efficiency can be given.
 Home-visit welcome 100%



01792 805075

Swansea, Mumbles & Cower

sales@melanieanderson.co.uk