



**MELANIE ANDERSON**  
Independent Estate Agents POWERED BY **exp** UK



# Parc Llydan, Pennard, Swansea, SA3 2DX

Offers Over £475,000

🛏️ 4 🚿 3 🚗 2

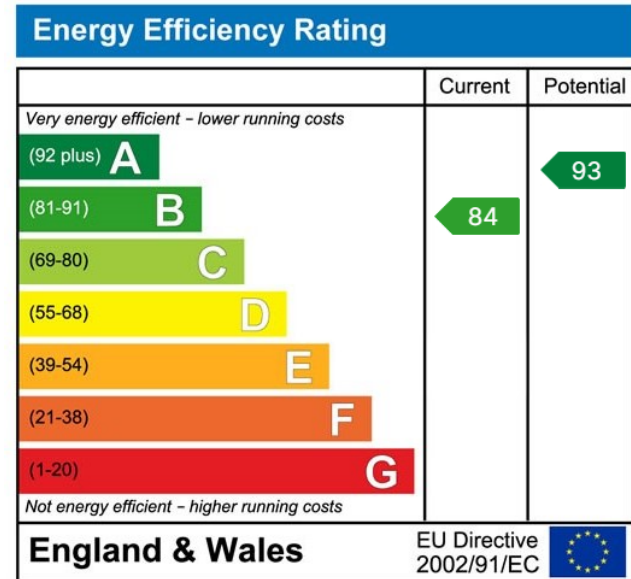
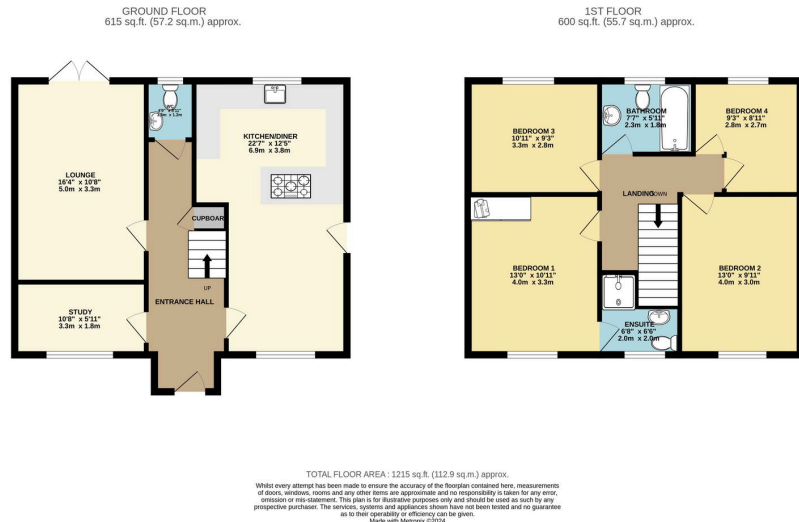


- Modern Four Bedroom Detached
- Rural Countryside Views to Rear
- Two Reception Rooms
- Single Car Garage & Driveway
- Nearby Gower Beaches, Clifftop Walks & Mumbles Village
- Within the Hedgerows Estate in Pennard
- Beautiful Open Plan Kitchen/ Diner
- Family Bathroom, En-suite to Master & G/F W.C
- Within Catchment for Pennard Primary & Bishopston Comprehensive School
- School





Offered with no ongoing chain is this immaculately presented four bedroom detached property situated in the Hedgerows Estate within a sought after location in Pennard. Benefiting from an open plan kitchen/diner, two reception rooms, ground floor w/c and en-suite to master. Further benefiting from a garage, driveway and an enclosed rear garden with pleasant countryside views to the rear. Parc Llydan is nearby local shops and amenities to include The Southgate Club, Pennard Golf club and just a short drive into the seaside village of Mumbles. Within excellent school catchments to include Pennard Primary and Bishopston Comprehensive School, making this an ideal family home. Viewing comes highly recommended.



📞 01792 805075

📍 Swansea, Mumbles & Cower

✉️ sales@melanieanderson.co.uk