

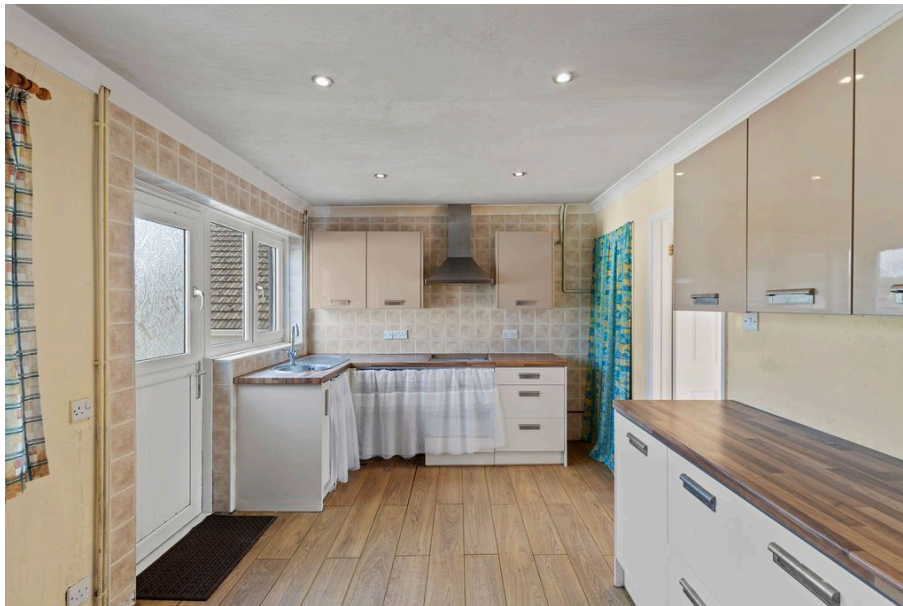


MELANIE ANDERSON
Independent Estate Agents POWERED BY **exp** UK

The Orchard, Newton, Swansea, SA3 4UQ

Offers Over £230,000

🛏️ 2 🚗 1 🚗 1



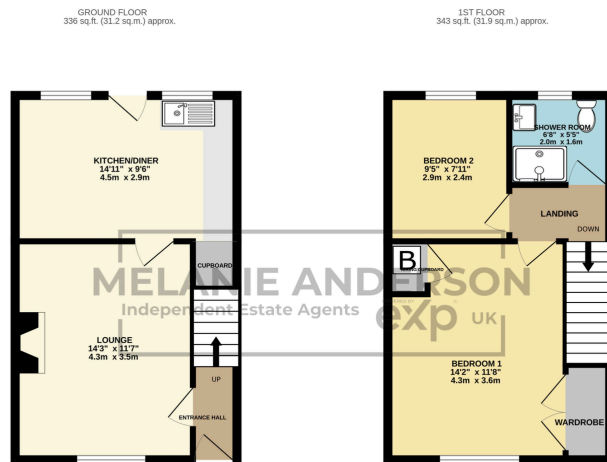
- No Onward Chain
- Open Plan Kitchen/Diner
- Sought After Location
- Nearby Local Amenities, Beaches & Mumbles Village
- Ideal FTB/Investment Opportunity
- Two Bedroom End of Terrace Property
- Single Car Garage
- Close to Popular Primary School and Within Catchment for Bishopston
- Gas Central Heating
- Quote MA0143



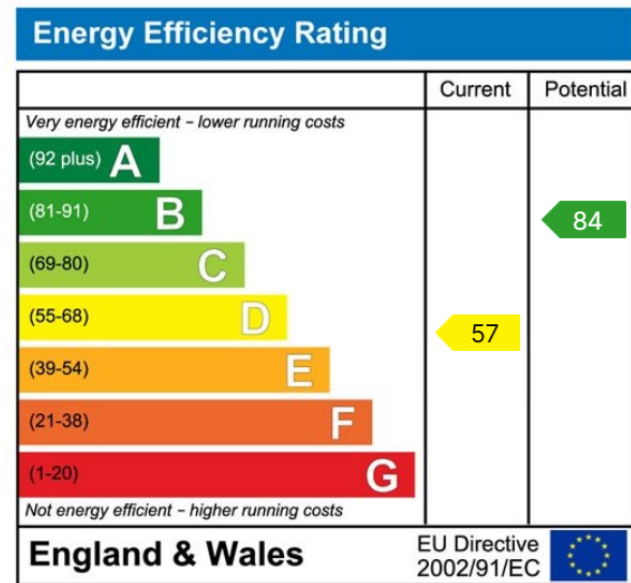
Offered with no onward chain is this two bedroom, end of terrace property situated in the sought after location in Newton. Property comprises; entrance hallway, lounge, open plan kitchen/diner, two bedrooms to the first floor and shower room. This property benefits from a gas fireplace with wooden surround in lounge, gas central heating, uPVC double glazed windows throughout, courtyard to rear, front patio and rear single garage. Located within close proximity to Newton Primary School and within catchment area for Bishopston Comprehensive School. Ideal location for visiting local parks, beaches, shops and many amenities within Newton, Mumbles and Gower. Ideal FTB/investment property. In need of modernisation throughout. Freehold.



It is essential to quote MA0143 when enquiring about this property



TOTAL FLOOR AREA: 879 sq.ft. (81.1 sq.m.) approx.
 While every attempt has been made to ensure the accuracy of the above contained area, measurements of doors, windows, rooms and any other parts are approximate and no responsibility is taken for any error, omission or mis-statement. This plan is for guidance purposes only and should be used as a guide only by prospective purchasers. The vendor, agent or agency does not warrant the accuracy of the area and no guarantee as to their accuracy or efficiency can be given.
 drawn with AutoCAD 2012



01792 805075

Swansea, Mumbles & Cower

sales@melanieanderson.co.uk