



MELANIE ANDERSON

POWERED BY **exp**™ UK

@ melanie.anderson@exp.uk.com

🌐 melanieanderson.exp.uk.com

☎ 01792 805 075

# Gowerton Road, Three Crosses, Swansea, SA4 3PX

Offers In Region Of £550,000

🛏 5 🚿 3 🚗 3

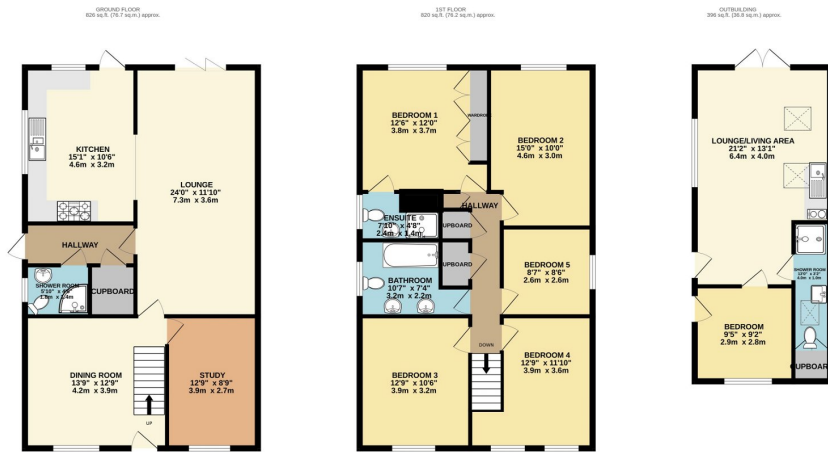


- Beautifully Presented Five Bedroom Cottage
- Three Reception Rooms & En-suite to Master
- Modern Self-Catering Annex with One Bedroom & Shower Room
- Sought After Three Crosses Location with a Semi-Rural Feel
- Off road Parking for up to 10 Vehicles
- Recent Updates to include New Roof, Windows, Doors & Underfloor Heating
- Fitted Sigma Kitchen, Utility Room & G/F Shower Room
- Fully Enclosed Substantial Rear Garden With Gower Views
- Ideal Family Home within Bishopston School Catchment

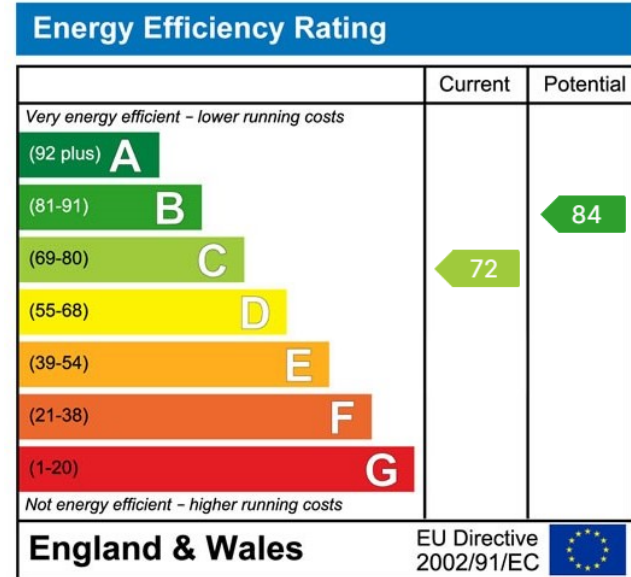
Quote Ref MA0143



Beautifully presented five bedroom semi-detached property situated in Gower, a delightful suburban village perfectly situated just 5 miles from the heart of Swansea. Conker Tree Cottage has been sympathetically renovated throughout to include a new roof, doors, windows and underfloor heating. Further benefits include a modern self-catering annex, comprising an open plan living space, bedroom and shower room. The property itself benefits from a ground floor shower room, en-suite to master, three reception rooms and off road parking to the front for three vehicles. The views to the rear are absolutely breathtaking along with a perfectly landscaped garden. Within Bishopston Comprehensive catchment, making this an ideal family home. Set on the "Gateway to Gower" this location offers easy links to popular Gower beaches and also provides easy access to Swansea, Mumbles, Llanelli and the



TOTAL FLOOR AREA: 2042 sq ft (189.7 sq.m.) approx.  
While every attempt has been made to ensure the accuracy of the floorplan contained here, measurements of doors, windows, rooms and any other items are approximate and no responsibility is taken for any error, omission or mis-statement. This plan is for illustrative purposes only and should not be used as such for any prospective purchase. The services, systems and appliances shown have not been tested and no guarantee is given as to their operability or efficiency can be given.  
 Made with Mergex ©2024



eXp World UK Ltd is a registered company at Level 37, 25 Canada Square, London, E14 5LQ.

Registered company number is 12016573. VAT Registration Number is 327 4120 29