

# INGLEWHITE ALT



## Three bedroom family home with detached garage

### *This home features...*

- Beautifully designed SieMatic kitchen diner by Stuart Frazer
- Integrated BOSCH appliances & breakfast bar
- Utility space off the kitchen
- Dual aspect family lounge with French doors
- Master bedroom with ensuite & two further double bedrooms
- Beautifully appointed family bathroom
- Worcester Bosch central heating with Hive control system
- Detached garage and block paved private parking
- Generous turfed & fenced private garden
- Photovoltaic (PV) system
- Quality fixtures & fittings throughout

Executive Collection

# INGLEWHITE ALT

Three bedroom family home with detached garage



## GROUND FLOOR

### Kitchen / Dining

5.2m x 3m  
17' 0" x 9' 10"

### Lounge

5.2m x 3m  
17' 0" x 9' 10"

### WC

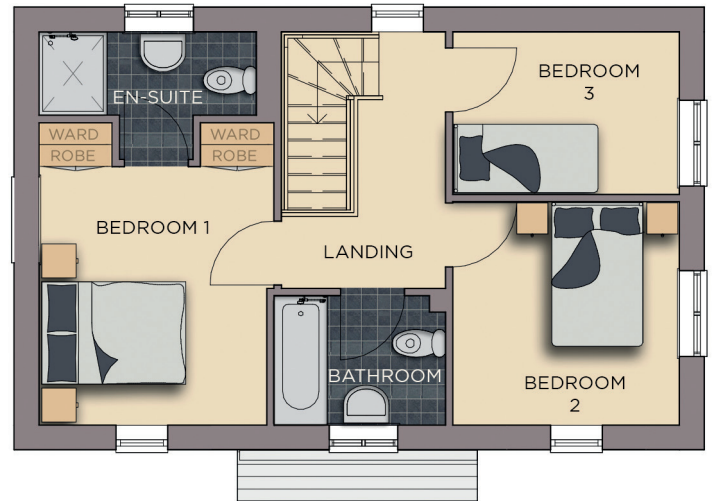
1.5m x 1.1m  
4' 11" x 3' 7"

### Utility

2.2m x 2.1m (Max)  
7' 2" x 6' 10" (Max)

### Hall

2.6m x 2.2m (Max)  
8' 6" x 7' 2" (Max)



## FIRST FLOOR

### Master bedroom

4m x 3.1m  
13' 1" x 10' 2"

### Family bathroom

2.3m x 1.7m  
7' 6" x 5' 6"

### Bedroom 3

2.1m x 3m  
6' 10" x 9' 10"

### Master ensuite

3.1m x 1.1m (Max)  
10' 2" x 3' 7" (Max)

### Bedroom 2

3m x 3m  
9' 10" x 9' 10"

### Landing

3.4m x 2.2m (Max)  
11' 1" x 7' 2" (Max)

## Benefits include...

Beautiful SieMatic kitchen by Stuart Frazer with integrated BOSCH single oven, hob, dish washer, microwave & fridge freezer | Steel chimney extractor hood & glass splashback | French doors leading to fully fenced & turfed garden with patio | Turfing to front | White Vitra sanitaryware with Hansgrohe fittings | Porcelanosa tiling to WC, family bathroom & en-suites | Heated towel rails | Worcester Bosch central heating with Hive control system | USB points | Four panel white internal doors | White painted staircase | White painted decor throughout | Security alarm | Smoke alarm | Fibre optic to BT Masterbox | Exterior lighting & tap | Private block paved driveway | Electric vehicle charging provision | Photovoltaic (PV) system | 10 year warranty... and so much more

++ See Create Homes' specification sheet for full details ++

The dimensions given are approximate only. Artist impressions are for illustrative purposes only.

CONSUMER  
CODE FOR  
HOME BUILDERS

www.consumercode.co.uk

create homes  
CREATEHOMES.COM

v. TG.2